

Schick and Gehman Feed Mill win barrow shows

By LAUREL SCHAEFFER Berks County Reporter
HATFIELD, Pa. - Hatfield Packing Co. was once again the host of the Annual Eastern Pork Producers and Lancaster Pork Producers Barrow Shows. The Associations held the contests simultaneously but did not combine the results.

Dr. John Zeigler, Pennsylvania State University, judged the hog carcasses for both contests. Lancaster had 46 hogs entered in their contest and the Eastern

Pork Producers had 80 hogs entered.

Before issuing the results on March 9, Zeigler commented that overall, the entries were the best group of hogs he has helped to cut ever. He told the group that adjusted live weights were used to determine the eligibility for the contests and six hogs were eliminated for being underweight, while none of the carcasses were found to be too heavy for the contest. Some hogs were disqualified from the contests for having loin eyes

which were too small, or pale, soft and exudative, (PSE) or short carcasses.

In mentioning PSE, Zeigler told the competing farmers of another syndrome found in some carcasses lately. This is DFD - dark, firm, and dry. Researchers do not know what causes this but Zeigler speculated it may be due to the severe cold weather experienced this winter. DFD carcasses, Zeigler continued, are good for use in processed meats because of the water retention abilities.

The champion carcass for the Eastern Pork Producers Show was a Duroc crossbred gilt, entered by Herb Schick, Kutztown. It had an adjusted live weight of 231.1 pounds; one inch backfat; 31.3 inch length; seven square inch loin eye; and 32.7 ham-loin percentage.

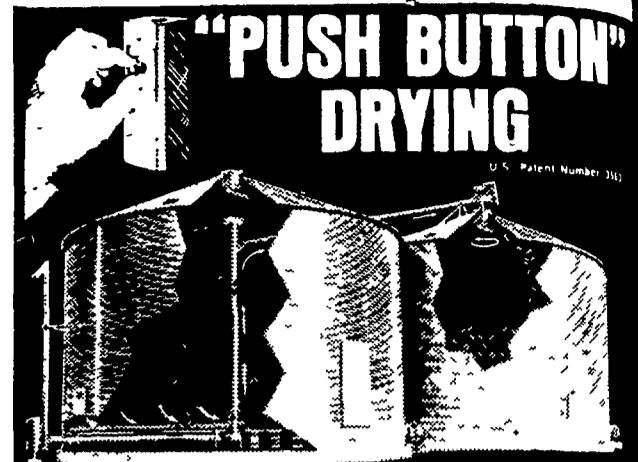
Reserve champion went to Otto Schick, Kutztown; 3rd place Herb Schick, Kutztown; 4th - Herb Schick, Kutztown; 5th - Otto Schick, Kutztown; 6th - John Turner, Kempton; 7th - Gene Curtis, Pennsburg; 8th - Herb Schick, Kutztown; 9th - Otto

Schick, Kutztown; 10th - H. Shelly, Palm.

Champion carcass for the Lancaster Show went to Gehman Feed Mills, Denver. This hog was a Yorkshire - Hampshire cross gilt with an adjusted live weight of 217.5 pounds; 9 inch backfat; 31.5 inch carcass length; 5.37 inch loin eye area; and 33 ham - loin percentage.

Reserve champion was Pork Chop Farm, New Holland. This hog was a Chester White gilt. 3rd place Daryl Nolt, Manheim; 4th - Valleys End Farm, Strasburg; 5th - Dutch Valley Farm, Manheim; 6th - John Strawbridge, Stewartstown; 7th - George Getz, Ephrata; 8th - Esra Good, Denver; 9th - Willow Glen, Strasburg; 10th - Willow Glen.

TRY A CLASSIFIED AD!



SHIVERS CIRCULATOR

Circu-Lator transforms your drying bin into a totally automated Continuous Flow System with drying capacities of 1,600 to 6,000 bushels of corn per day (25 percent - 15 percent) depending upon bin and fan size. It dries high moisture grain (30 percent and above) with ease, and operates around the clock without babysitting.

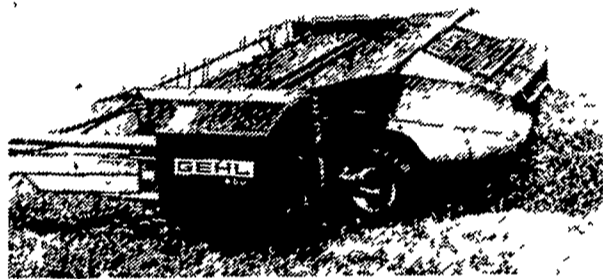
With the Circu-Lator, your entire bin becomes a surge tank—fill it as fast as you harvest. When adjacent storage bins are full, the Circu-Lator becomes a high capacity Recirculating Batch Dryer which may be rapidly filled to the eaves.

Check into the Circu-Lator. See why the Best Continuous Flow System is Also the simplest and least expensive.

NORMAN B. LEAMAN

R1
Willow Street, PA 17584
PH: 717-464-3688

Get a SHOWDOWN Demonstration Before You Buy!!



It's tough to beat a Gehl mower conditioner in a SHOWDOWN demonstration

Compare Gehl with others and you'll see that with Gehl you get more for your money. Including torsion bar suspension for free flotation at each end of the machine. Direct PTO-to-gear-box drive. Patented Gehl sickle hold-down clips that prevent build-up. Integrally shielded break-away PTO that permits square corners without vibration or noise. You can switch from light, perfectly formed windrows to full width, quick curing swaths in seconds without tools! And there's much more.

Come on in and see our haymaking leaders. Ask about a SHOWDOWN demonstration on your farm.



ZOOK'S FARM STORE N. G. HERSHEY & SON
HONEY BROOK, PA 215-273-9730
MANHEIM, PA 717-665-2271

NISSLEY FARM SERVICE
WASHINGTON BORO, PA 717-285-4844
AGWAY, INC.
CHAPMAN EQUIP. CENTER
CHAPMAN, PA 215-398-2553

S. JOHNSON HURFF
POLE TAVERN
MONROEVILLE, NJ 609-358-2565 or 609-769-2565
CHAS. J. MCCOMSEY & SONS
HICKORY HILL, PA 215-932-2615

STOUFFER BROS. INC.
CHAMBERSBURG, PA 717-263-8424
WERTZ GARAGE
LINEBORO, MARYLAND [301] 374-2672

NEVIN N. MYER & SONS, INC.
CHESTER SPRINGS, PA 215-827-7414
LEBANON VALLEY IMPLEMENT CO., INC.
RICHLAND, PA 717-866-7518

UMBERGER'S MILL
RT. 4 LEBANON, PA [FONTANA] 717-867-5161
CLAIP J. MYERS
Lake Road R1
Thomasville, PA 717-259-0453

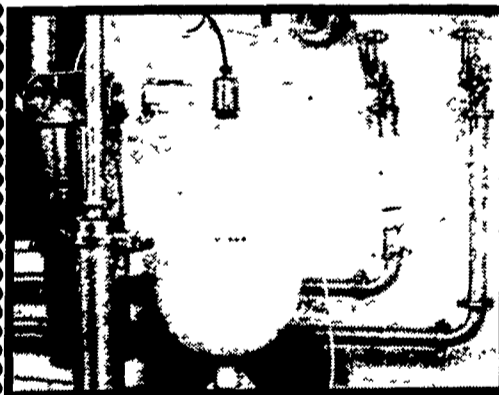
A. L. HERR & BRO.
QUARRYVILLE, PA 717-786-3521

BINKLEY & HURST BROS.
133 Rothsville Station Road
Lutz, PA 717-626-4705
WILLIAM DAUGHERTY
R. D. No. 2
FELTON, PA 717-244-9787

DOWN RIGHT AMAZING OFFER

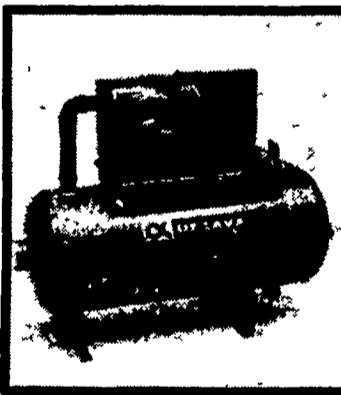
To help combat this weather, we are making you a Down Right Amazing Offer!

PURCHASE ANY OF THESE QUALIFIED DE LAVAL PRODUCTS AND RECEIVE FREE A HÄNSA-BRÄNTA GOOSE DOWN VEST:



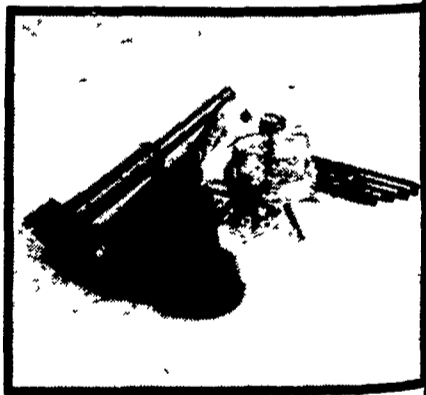
• All Receiver Groups (except Compact Receiver)

De Laval Receiver Groups are engineered and shaped to receive milk and to wash completely and easily. The sensitive milk level probes control milk pump operation. Vacuum lines and sanitary trap positioned to protect the vacuum system.



• Vacuum Suppliers (Models 74, 76, 78 and 742)

De Laval vacuum suppliers are ruggedly built and have few moving parts. A unique vane material, Ferobestos, reduces friction and wear to a minimum. Fast recovery, cool running with a visible oil supply.



• Four Claw Conversion Groups

Consists of four liners, four short air tubes and the De Laval Flo-Vu Claw. Features an automatic shut-off, maximum visibility, greater capacity and easier inspection. Can be used to upgrade De Laval milker units or can be used on other manufacturers' units. Part No. 8301990-80.

SEE YOUR LOCAL **DE LAVAL** DEALER TODAY

LANDIS BROS., INC.
1305 Manheim Pike
Lancaster, PA 717-393-3906

PEOPLES SALES & SERVICE
Oakland Mills, PA 717-463-2735

I. G.'s AG SALES
Silverdale, PA 215-257-5136

J. B. ZIMMERMAN & SONS
West of Blue Ball, PA on Route 23
717-354-4955

ERB & HENRY EQUIP., INC.
New Berlinville, PA 215-367-2169