

# SPRING SALE

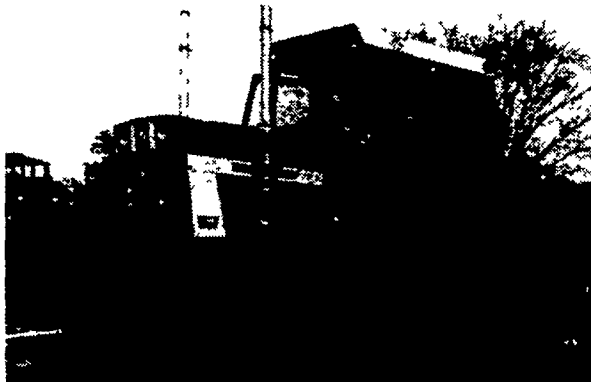
USED EQUIPMENT

## TRACTORS

## TRACTORS



IH 1566, 431 hrs., 1975, 20.8x38 duals, fully weighted, 1000 P.T.O., air cond., AM-FM & 8-track stereo.



IH 1568 Farmall, 1974, 519 hrs., 1000 RPM P.T.O., dual 20.8x38 tires, AM-FM radio. \$21,000



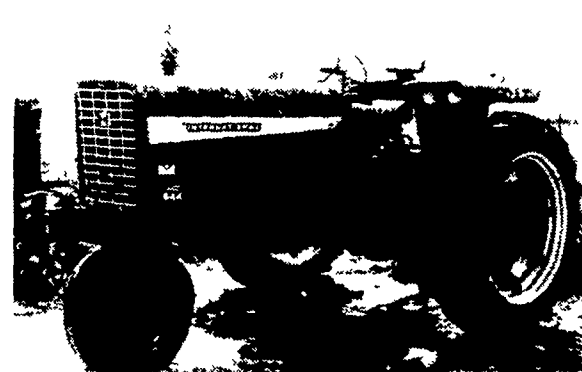
IH 1066 Farmall, 1875 hrs., 1972, new 20.8x38, dual P.T.O., 2 valves, year-a-round cab, air. cond. \$15,000



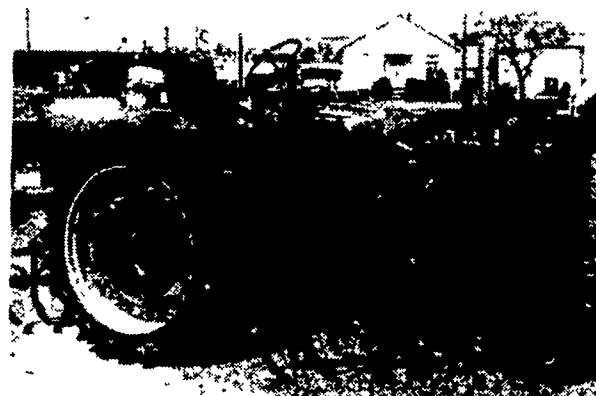
Oliver 1950-T, 1969, 1500 hrs., paint good, 18.4x34 tires, very good, hydra shift, front weights \$8895



IH 1466, 1376 hrs., 1971, air cond., dual shaft P.T.O., dual valves, FM stereo, 23.1x34 tires. \$18,000



IH 544 Farmall gas, 1958, new overhaul, dual valves, 3 pt. hitch, tricycle, good paint, 13.6x38 tires.



Farmall Super C w/cultivators, fast hitch, good tires, tuned up and serviced. \$1150



John Deere 60 - good tires. \$1100

### OTHER TRACTOR VALUES

- J.D. 3020
- IH 666 D hydro
- IH 460 gas Farmall
- IH 544 gas utility
- IH 574 D utility
- Ford 741
- Farmall A
- Farmall 504
- Farmall 656 gas

**NOTICE**

**CORN PLANTER  
SERVICE MEETING  
TUES. MARCH 15, 7:30 P.M.**

**—FEATURING—**  
★ SETUP  
★ MAINTENANCE  
★ SERVICE

**A Few Highlights:**  
Cyclo Planter Adjustments  
Hooper Depth Gauge Wheels  
Planter Monitoring Systems  
**PLAN NOW TO ATTEND**

### TANK SPECIALS

- 400 GAL. JAMESWAY
- 300 GAL. GIRTON
- 300 GAL. ESCO
- 2 USED PETER'S, 15 H.P.
- 1 - LISTER SR 2
- 1 - LISTER LR 1



**24-Hour Service -**  
Contact Gratz M. Sult at  
C. B. Hooper & Son, Phone 768-8231  
After 5:00 P.M. 768-8555

### PHYLLIS BROOKMYER



RECEPTIONIST - CASHIER

**Call Dick Bomberger**

Call Us. It Could Be  
We Have It.

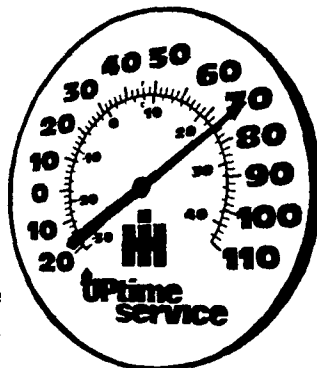
### VALUABLE COUPON

**SAVE \$6.00**  
WITH COUPON

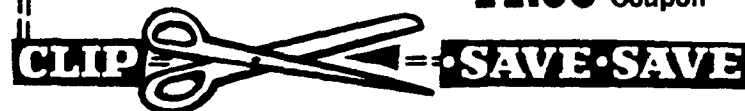
**International Harvester  
Outdoor Thermometer**

- Extra-large 18-inch dial
- Easy-to-read temperature
- Both Fahrenheit and Celsius scales
- Heavy steel panel with hanging clips
- Weather-resistant convex lens

Reg. \$17.95



**\$11.95** With  
Coupon



RADIO CONTROLLED TRUCKS FOR BETTER SERVICE

# C. B. HOOBER & SON INC.

INTERCOURSE, PENNA.

(717) 768-8231

AUTHORIZED UPS STATION

