

THE OLD FARMER'S ALMANAC

MARCH 14-20, 1977
Spring arrives on Sunday!

Get your tomatoes going in hot beds now ... General MacArthur arrived in Australia March 18, 1943 ... New moon March 19 ... Spring begins March 20 ... Average length of days for the week, 12 hours, 1 minute (day equals night) ... More than the moon will ride high the night of March 17; it's St. Patrick's Day ... Redwing blackbirds arrive back north ... Every man is the architect of his own fortune.



Ask the Old Farmer: In the old days it was supposed to be bad luck to get out of bed on the left side. Where did this come from? —W.T., Johnstown, Penn.

Yes, and when you got out from the righthand side, you had to make sure you first put your right foot on the floor. Way back when, people used to put their beds against a left wall so they were forced to get out on the right.

Home Hints: If the end of transparent tape is stuck to the roll, place it in the refrigerator for ten minutes, it can then be loosened without breaking fingernails or tape

OLD FARMER'S WEATHER FORECASTS

New England: Week begins with cold and flurries, then Wednesday brings rain and snow through Saturday.
Greater New York-New Jersey: Light snow, cold; becoming showery Thursday through the weekend.
Middle Atlantic Coastal: Snow and sleet through Wednesday, remainder of week sunny and mild.
Piedmont & Southeast Coastal: Cold, showers west, rain east to start, then fair at midweek; rain in east weekend.
Florida: Sunny and warm to start, then rain, cool, frost north Tuesday through Wednesday; sunny and mild for week's end.
Upstate N.Y.-Toronto & Montreal: Cloudy, cold, flurries through Wednesday; Thursday through weekend, sunny, mild with some showers.

(All Rights Reserved, Yankee, Inc., Dublin, N.H. 03444)

Omaha

March 10, 1977

Weekly 51 cattle: Compared with the previous week's close: through midweek, slaughter steers were 75-1.00 lower and heifers 75-1.25 lower with late supplies insufficient to reflect the effects of an improved carcass trade. Cows were \$1.00-1.50 higher and bulls firm to 50 higher.

Four day receipts 14,100 as compared 11,200 previous week and 16,400 a year ago. The fed cattle trade continued to follow a very erratic pattern. The initial session was characterized by good demand and moderately higher prices. However, trading dulled abruptly on Tuesday and prices were forced sharply downward with outlet growing more restricted as trading progressed: a meat cutters strike along the eastern seaboard was blamed for part of the bearishness which triggered a \$2.00-3.00 plunge in carcass prices, but much of this severe break was recovered at midweek only to again turn downward on Thursday. Local supplies were slightly larger than the previous week but were not burdensome. Slaughter steers made up approximately 39 of the week's total and heifers 43 with a fairly liberal percentage choice. Cows comprised 12 and feeders 4. Steers: Early, several loads choice with end prime:

Valley

Livestock

Valley Stockyards, Inc.
Athens, Pa.
March 7, 1977

Reported receipts of 677 calves, 154 cows, 27 bulls, 25 heifers, 95 hogs, five sheep, and three steers. Calf market is good; cattle market is higher than last week's market.

Veals 55.00 - 71.00; bobs 25.00 - 40.00; grassers and feeders 25.00 - 30.00; lambs, 33.00 - 40.00; sheep 8.00 - 14.00; hogs 20.00 - 39.00; heifers 25.00 - 32.00; steers 27.00-32.50; bulls 30.00-36.00; cows, good 28.00 - 31.75; cows, med. 24.50 - 26.00; cows, poor or small 18.00 - 22.50; goats 14.00 - 30.00.

Easter lamb and goat sale will be April 4.

predominantly 3 1125-1300 lbs. \$38.40-38.75, load choice and prime 4 1240 lbs. \$37.50, and load same grade 4-5 1580 lbs. \$34.50. At the close, three loads choice 3 1075-1150 lbs. \$37.15-37.25, most choice 2-4 975-1275 lbs. \$36.00-37.00, load prime 5 1678 lbs. \$31.50. Mixed good and choice 2-4 950-1250 lbs. \$35.25-36.00. good 2-3 \$32.00-35.50. Standard and good 2-3 \$30.00-32.00.

Average of 1s-214, detailed quotations, for choice 900-1100 lb. steers this week \$36.92; choice 1100-1300 lbs. \$38.90. Average weight steers first three days 1151 lbs. compared 1141 lbs. previous week. Average weight heifers first three days 991 lbs. as compared 991 lbs. previous week.

Heifers: Early, eight loads choice and prime 3-4 943-1080 lbs. \$37.25-37.50. At midweek low time majority choice 2-4 875-1100 lbs. \$34.50-36.00, load 1025 lbs. \$36.25. Mixed good and choice 2-3 800-975 lbs. \$33.75-34.75. Good 2-3 \$30.50-33.50. Small lots standard and good 2-3 \$28.50-30.00.

Cows: Utility and commercial 2-4 \$26.50-28.50, few \$29.00. Canner and Cutter \$22.50-26.50. Mixed cutter and utility \$26.75-27.00.

Bulls: 1-2 1400-2100 lbs. \$31.00-34.00, individual 1 \$34.50-35.50.

New Holland Horse

Monday, March 7
Reported receipts of 260 horses, mules, and ponies. Market steady with last week's market.

Local work horses 550-870, 1 pair 1800; mules 300-610, 1 pair 1660; driving horses 150-675; riding horses 150-275; better riding horses 300-550; lightweight killers 22-26; heavyweight killers 30-32; mares 15-50; colts 10-25; geldings 15-45; larger ponies 60-110.

TOP OF THE HOG MARKET

DANVILLE LIVESTOCK MARKET

OLD ROUTE 11
DANVILLE, PA 17821
717 - 275-2880



Market your hogs the auction way.

SALE EVERY MONDAY 2 P.M.

Malvin M. Lehman (Owner)

MARCH ANNIVERSARY MONTH

At **STOLTZFUS MEAT MARKET**

REGISTER FOR
SIDE OF BEEF
Weekly Specials

—FRESH BEEF AND PORK—
OUR OWN HOME MADE
SCRAPPLE & FRESH SAUSAGE

Bacon and Country Cured Hams
Orders taken for freezer Meats

PH. 768-3941

Directions: 1 block east of Intercourse
on Rt. 772 - Newport Road

STORE HOURS THURS. FRI. SAT.
9-5 9-8 8-5



OPEN HOUSE

2 - BIG DAYS

MARCH 16-17

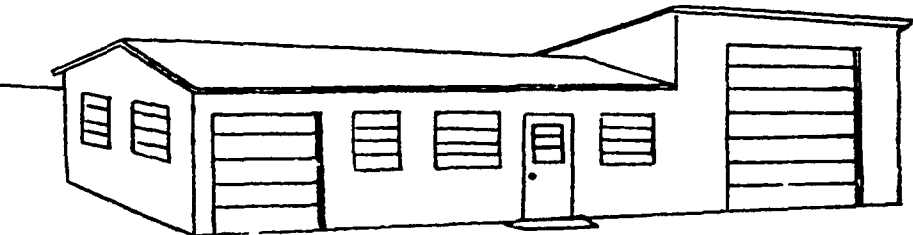
AARON S. GROFF & SON

FARM AND DAIRY SUPPLIES

Hoffman Products

Ephrata, R.D. 3, Pa. 17522

Tarp. Repairing



We Give S & H Green Stamps
Lunch Served
Door Prizes

Time: 10:00 A.M. to 9:00 P.M.

717-354-4631

GUTWEIN

CORN AT ITS BEST

GUTWEIN SCORES AGAIN!

NATIONAL
CORN GROWERS ASSN.

"Duke" Hasselbring, Watsek III
246.06 Bu. On 25A Non-Irrigated
WITH GUTWEIN 64



PA. 5A CONTEST
- EAR CORN

George Stambaugh, Newville, Pa.

214.6 BU. WITH GUTWEIN 74



WASHINGTON CO., MD.
COMM. CORN PLOT

1st - GUTWEIN 74 - 207.4 BU.
2nd - GUTWEIN 69A

Results Out Of 99 Entries!



Good Reasons To Say:

LOOK WHO IS NO. 1

Make 1977 Your Year Of Discovery ...

For The Name Of Your Local Dealer, Call:

Harold J. Dietrich

RD 1, Box 98 Richland, Pa.
(717) 933-4940