

Hog Markets

Lancaster Market

Monday, March 7, 1977
 HOGS: Barrows and gilts 1.00-1.50 lower.
 BARROWS AND GILTS:
 US 1 200-235 lb. 40.50-41.00;
 US 1-2 200-240 lb. 39.60-39.85;
 US 1-3 200-245 lb. 39.00-39.60

Lancaster Auction

Wednesday March 9, 1977
 HOGS: Barrows and gilts 50 higher, extremes 1.00 higher.
 BARROWS AND GILTS:
 US 1 200-240 lb. 41.00-41.50;
 US 1-2 200-240 lb. 40.25-40.75;
 US 1-3 200-250 lb. 39.50-40.25

Vintage

Saturday, Mar. 5, 1977
 968 Head.
 No. 1 200-250 42.00-42.50;
 No. 2 & 3 200-240 40.50-42.00;
 light weights 160-175 25.00-32.00; heavy straights 260-300 35.00-41.25; sows 300-785 25.00-33.25 & boars 250-700 18.00-22.50.
 Wednesday, Mar. 9, 1977
 748 Head.
 No. 1 200-240 40.00-40.75;
 No. 2 & 3 200-250 39.00-40.00;
 light weights 130-177 22.00-31.00; sows 300-600 30.00-31.75 & boars 210-465 22.50-28.00.

Peoria Auction

Thursday, March 10, 1977
 Barrows & gilts active, 50-75 higher.
 US 1-2 200-240 lb. 39.00-39.50; US 1-3 200-250 lb. 38.50-39.00

Indianapolis

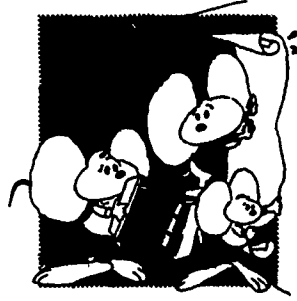
Thursday, March 10, 1977
 Barrows & gilts very active, 50-1.00 higher.
 US 1-2 200-240 lb. 39.25-39.50; US 1-3 200-250 lb. 39.00-39.25; Couple Lots US 2-3 250-265 lb. 38.50-38.75

St. Louis

Thursday, March 10, 1977
 Barrows & gilts fairly active, mostly 50 higher.
 US 1-2 200-240 lb. 39.00-39.25; US 1-3 200-250 lb. 38.75-39.00

New Holland

New Holland Sales Stables
 New Holland, Pa.
 March 7, 1977
 HOGS: 2005
 Retail: 40.50-41.75
 Heavyweight: 38.00-39.50
 Lightweight: 37.00-39.50
 Wholesale: 39.50-40.50
 Sows: 27.00-35.00
 Boars: 23.00-32.50
 Shoats: 678 head
 No. 1 and 2 35-45 lbs. 90.00-98.00, 48-62 lbs. 72.00-84.00;
 No. 2 38-47 lbs. 82.00-95.00, 49-60 lbs. 72.00-84.00; No. 2 and 3 33-45 lbs. 75.00-100.00, 47-64 lbs. 66.00-81.00; No. 3 35-45 lbs. 78.00-81.00, 46-65 lbs. 57.00-73.00; Utility 36-49 lbs. 51.00-54.00.



Lancaster Grain Prices

Friday, March 11
 These prices are made up of the average prices quoted by a number of participating area feed and grain concerns. It should be noted, however, that not every dealer or broker handles each commodity. All prices are per bushel except ear corn and soybean meal which are per ton.
 The average prices quoted Friday, March 11 are as follows:

	Bid+	Offered+
Ear Corn	62.50	71.00
Shelled Corn	2.60	2.77
Barley	2.45	
Oats		
Local	1.70	1.90
Western	2.19	2.36
Wheat		
Millers	2.75	2.92
Soybeans	8.10	
Soybean Meal		

Futures Trading

(Closing Bids as of Thursday, March 10)

	Chicago Cattle	Chicago Hogs	New York Maine Potatoes	Chicago Fresh Eggs
March				59.80
April	38.90	34.75	7.25	51.30
May			8.60	48.40
June	41.10	37.15		49.25
July		39.10		50.15
Aug.	42.05	38.55		
Sept.				54.75
Oct.	42.55	37.20		
Nov.			5.64	
Dec.	43.45	37.60		

Trend—Cattle are mixed, Hogs are higher, Potatoes are steady, and Eggs are lower.
 Market Provided by Commodity Department Reynolds Securities, Inc.

CHICAGO GRAIN FUTURES

(Closing bids as of Thursday, March 10)

	Wheat	Corn	Soybeans	Soybean Meal
March	2.74½	2.54¼	8.22½	229.50
May	2.80½	2.61¼	8.24	234.80
July	2.87¼	2.66¼	8.21	236.00
Aug.			8.09¼	233.00
Sept.	2.94¼	2.68¼	7.48½	215.70
Oct.				192.00
Nov.			7.05½	
Dec.	3.04	2.71¼		189.30

Trend—Corn is lower, Wheat is lower, Soybeans are lower and Soybean Meal is lower.
 Markets Provided by Commodity Department Reynolds Securities, Inc.

U.S. Inspected Livestock Slaughter

Estimated Daily Livestock Slaughter Under Federal Inspection

	CATTLE	HOGS	SHEEP
Week to date	580,000	1,261,000	97,000
Same period last week	526,000	1,173,000	93,000
Same period last year	583,000	1,113,000	97,000

Know Where the Activities Will Be? Read the Farm Women Calendar.

J. M. HOOBER INC.

SINCE 1895

Do You Have Spring Lambs At Home?

At J. M. Hooper Inc. we have an experienced and capable staff to work for you in the marketing of your Lambs and Sheep.

Give us a call for any information you need.

SPECIAL EASTER LAMB SALE

APRIL 4, 1977

BRING YOUR LAMBS IN EARLY FOR TOP MARKET DOLLARS

NEXT FEEDER PIG SALE

MARCH 15, 1977

Please Call Us Soon
 PH: (717) 397-6191, 569-2084, 626-5659

GREEN DRAGON LIVESTOCK SALES

1 mile North of Ephrata, PA

COWS COWS COWS

BUYERS FROM 3 STATES

Regular consignments from Ray Kyper, Alfred Albright, Bob Kennedy, Dale Brewer and Ed Stover plus local consigners.

Lots of good Northern Feeders and Stockers.

SALE EVERY FRIDAY

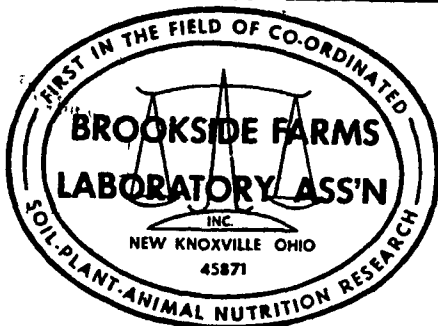
Bulls, Steers, Slaughter Cows, Lambs and veal calves.

11:00 A.M. - Beef Sale Stockers & Feeders 200 to 250 each week.

12:30 P.M. - Dairy Cows
 7:00 P.M. - Small Animal Sale

For Special Sales and Herd Dispersals on the farm or at our barn or other market information call: Office 717-733-2444.

Walter H. Risser, Proprietor



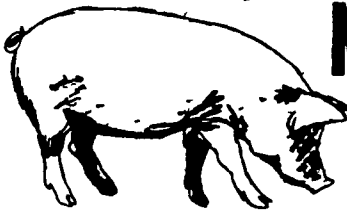
National Reputation - Local Service

CONTACT:
JOHN CAMPBELL
 Atglen, PA
 (215) 593-5529
GARY MCGEE
 Spring Run, PA
 (717) 349-2340
DAN DERR
 Conowingo, MD.
 (301) 378-3280



ATTENTION CATTLE FEEDERS

Do you want to make buying your stockers and feeders easy. It can be very simple. Just call and give us your order. All orders filled to your exact specifications. Call us anytime. We can be very helpful.



NEXT FEEDER PIG SALE

TUESDAY, MARCH 15-1 P.M.



Consign all your feeder pigs to Walter M. Dunlap & Sons where they will be handled by a capable and experienced staff.

Feeder pigs received from 6 A.M. to 11 A.M.

WALTER M. DUNLAP & SONS

LANCASTER STOCK YARDS

Consignors can get state tags at our office, thereby saving 25c marketing expense

For Further Information, Call 717-397-5136