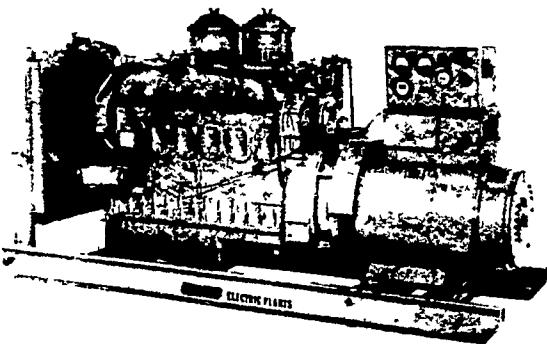


Electric Generating Systems

Built to Your Specifications
Manual or Automatic
L. P. Gas - Diesel - Gasoline



Sales - Service

Martin Electric Plants

Isaac W. Martin, Owner
Pleasant Valley Rd., RD2
Ephrata, PA (717) 733-7968

Farm Women Societies

Lancaster Co. Society 4

Mrs. Ira Barley, Washington Boro, RI was the "Mystery Guest" at the February meeting of Lancaster County Society of Farm Women 4 held on February 26 at the Farm and Home Center. She displayed and explained a large assortment of craft items to fellow members. Her favorite crafts included decoupage, scherensnitte, quilting, crewel embroidery, needlepoint, crochet, quilting, and rug hooking. Other entertainment was

provided by a quartet comprised of Mrs. Barley's family - two daughters, Jeannette Funk and Arlene Forney; a daughter-in-law, Martha (Mrs. Donald) Barley; and a granddaughter Cindy (Mrs. Fred) Barley. They sang several hymns and were accompanied at the piano by Mrs. Robert Garber.

The March meeting will be a luncheon honoring the county officers and Society 23. The luncheon will be held promptly at 12:30 p.m. at the Ironville United Methodist Church, Holly Drive. The Rev. Duane Steele will be guest speaker.

Lancaster Co. Society 11

Lancaster County Farm Women Society 11 met on February 24 at the home of Mrs. Verna Shirk.

Roll call was answered by 18 members and two guests. Secretary and treasurer reports were given and approved. It was reported that eight members furnished 40 hours of work at the Easter Seals office.

March 21 was set to sew for Cancer Society.

Making a farm scene quilt was planned.

The program was an auction of one pound gift-wrapped packages.

Next month's meeting will be held at the home of Mrs. Mary Nolt, 931 Virginia Ave. Lancaster, on March 31.

Lancaster Co. Society 13

The February meeting of Lancaster County Farm Women Society 13 was held at the home of Mrs. Laura Denlinger, 28 Greenfield Road, Lancaster, with Mrs. Ethel Landis serving as co-hostess. Refreshments were served with "Valentine's Day" as the theme.

Mrs. Becky Buckwalter from Herbcraft, Scotland Road, Quarryville, displayed numerous herbs and spoke on their uses and medical purposes as used by our forefathers.

Envelopes were passed out for a bakeless cake sale. The

group was encouraged to make crafts and to bake for a stand at the Dry Goods' Store, East Town Mall, on April 1, at 9:30 a.m.

Discussion on who to support for this year's project was also held. The Welsch Mountain Medical Center or LARC was brought up, but the discussion was slated for the next meeting of the group.

The group also planned to have a garage sale at the home of Mrs. Edna Myers, Bird-In-Hand, on May 6.

The next meeting will be held on March 12 at 1 p.m. for a luncheon at the Farm and Home Center, where the group will entertain Society 1 from Lititz.

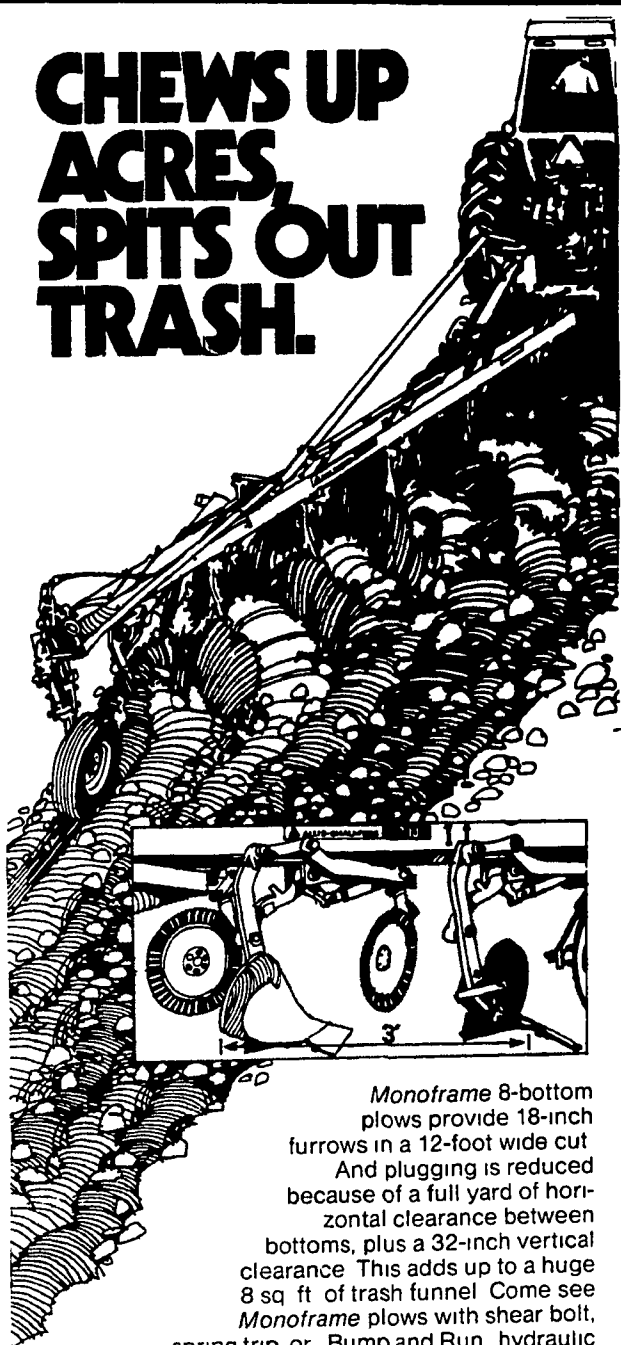
Lancaster Co. Society 15

A slides show of the Farm Women trip to Hawaii last August was the featured entertainment of the get-together of Farm Women Society 15 on February 17. Elma Marele, a member of Society 15 went along on the trip, showed the slides. Thirty-four members were in attendance at the meeting which was held at the Union Presbyterian Church near Kirkwood. Hostesses were Bertha Ferguson, Jessie Trimble, Gertrude Weicksel, Evelyn Myer, and Colleen Shoemaker.

The business meeting was conducted by the president Mrs. Dorothy Johnson. Kathryn Wagner, chairman of the trip committee, received reservations for the evening at the Bakers Theatre on March 24 at 6:30 p.m. She also told of plans for a 10-day trip to the Ozarks in June. Other dates

[Continued on Page 64]

CHEWS UP ACRES, SPITS OUT TRASH.



Monoframe 8-bottom plows provide 18-inch furrows in a 12-foot wide cut. And plugging is reduced because of a full yard of horizontal clearance between bottoms, plus a 32-inch vertical clearance. This adds up to a huge 8 sq ft of trash funnel. Come see Monoframe plows with shear bolt, spring trip, or Bump and Run hydraulic reset bottoms which lift over buried objects and reset automatically. Plow more acres per day in less time with plows that eat acres, and pass trash.

Monoframe is a registered Allis-Chalmers trademark

The Rising Power in Farming

ALLIS-CHALMERS

C. J. Wonsidler Bros. RD1, Quakertown, PA 18951
Phone 215-536-1935
215 536-7523

Roy H. Buch, Inc. Ephrata, RD2
717-859-2441

BHM Farm Equipment, Inc. Annville, RD1, PA
717-867-2211

Grumelli Farm Service Quarryville, PA
717-786-7318

A. J. Noss & Son, Inc. RD2, Oley, PA
215-987-6257

L. H. Brubaker, Inc. Lancaster, PA
717-397-5179

Shartlesville Farm Equipment Shartlesville, PA
215-488-1326
H. Daniel Wenger, Prop'

Ag.-Industrial Equipment R2, Rising Sun, MD
301-658-5568

"Kitch your alle" "Blower to a star"

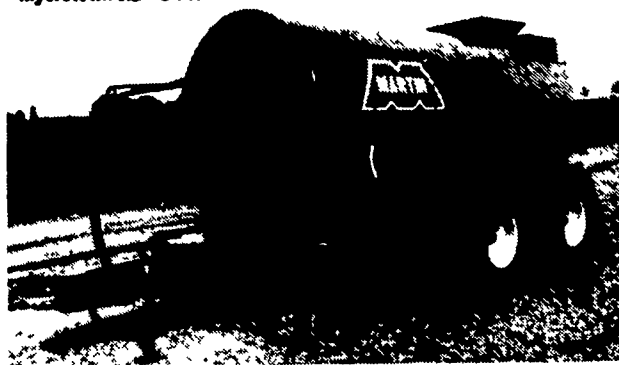


"Heavy Duty" "Toppers" "Energy Pak"

R.D. 4 MYERSTOWN, PA. 17067
CALL COLLECT 717-866-5708

MARTIN LIQUID MANURE SPREADERS

Myerstown RD #3 PA 717-933-4151



Model 2250 Gal.

The following features are standard equipment on Martin's 1500 gal. - 2250 gal. - 3300 gal. - Tank Spreaders.

- Heavy duty internal chopper type auger.
 - Includes Hydraulic cylinder and all hoses.
 - Includes PTO shaft, jack and ladder.
 - Spreaders built and designed to handle manure from free stall barn without adding any liquid.
 - Rear fan built to handle spread of 45 to 60 feet liquid or thick manure
- * Optional Equipment Available
- Custom Built Open Top Spreaders designed for scrape-off ramps or loading in with loader tractor.
 - Braking system

BALANCED NUTRITION vs. HIGH SUPPLEMENT COSTS

We got 'em licked.

Everyone wants to be sure of balanced nutrition. After all, it's the performance of your herd that means profits for you. With Mol-Mix® liquid supplements, your supplement dollar not only helps guarantee your cattle's performance, but also helps guarantee your net profits. Mol-Mix guarantees the moistures and sugars in our standard formulations and ingredients like corn distiller's solubles, condensed fermented corn extractives, phosphoric acid, ammonium polyphosphate and our unique "buffered release" formula provide the balanced nutrition so essential for top milk production. And you know what that means for your profits.

Even today, with so many supplements compromising quality for cost, Mol-Mix still includes the very ingredients that continue to keep us "The Liquid Leader"™. With Mol-Mix, your supplement costs are

a good investment toward the performance and profits you will receive in the future. This spring, make Mol-Mix liquid supplements a part of your feeding program. We're not talking about something that will only add to your feeding costs... we're talking about the bottom line.



JOHN Z. MARTIN
New Holland RD1 Phone 717 354-5848

RED ROSE FEED & FARM SUPPLY
Div. of Carnation
BUCK, PA 284-4464

MAIN OFFICE
27 N Church St
Quarryville
786 7361

GROFF'S HOME DRESSED MEATS
Beef
For Your Freezer!

GROFF'S ALSO OFFERS COMPLETE FACILITIES FOR CUSTOM BUTCHERING OF PORK AND BEEF. DONE TO YOUR SPECIFICATIONS!

Also **CUSTOM CUTTING AND SMOKING**
HAMS - BACON BOLOGNA
GROFF'S MEATS

13 N Market St. Elizabethtown, Pa. Phone 367 1246
Since 1875 In Our 102nd Year