

Plant lovers' corner

Scales common malady of house plants

Several types of scale insects are common pests of houseplants.

Scales have a shell-like covering which protects their body. Some are oval, hemispherical, or shaped like an oyster shell. You may find them on leaves and plant stems.

Continued feeding of this insect results in poor growth and stunted plants. As scales feed they secrete droplets of a sticky liquid called honeydew, which puts a shine on foliage.

If you find only a few scales you can remove them by spraying with lukewarm water or by washing with soapy water, using a soft brush or cloth. Use two teaspoons of a mild detergent to a gallon of water.

For heavy infestations dip or spray plants with malathion, following label directions.

Add one-half teaspoon of a mild household detergent (not soap) to a gallon of spray to increase the wetting efficiency of the insecticide.

You may have to make several applications at intervals of three or four weeks to kill all the scale insects.

Dead scales may cling to a plant for a month or longer. Living scales contain juice when crushed. Dead scales become dry and chaffy.

Greenhouse course for gardeners

For propagating, many plants need small greenhouses to provide warm, humid conditions with plenty of light throughout the year. There are two basic types of greenhouses, according to

Snowmobilers called

HARRISBURG - During the midst of the winter season, when snowmobiling activities were at a peak, the Snowmobile Unit in the Department of Environmental Resources established a "Snowmobiler's Hot Line" to provide information on snow conditions.

Not only were snowmobilers interested in the service offered, said Mrs. Doris Thompson, chief of the Snowmobile Unit, but also those persons planning cross country ski trips took advantage of the "Hot Line."

This 24-hour service, which offered the latest information on snow conditions in five specific areas of the State which were known for snowmobile activities, was considered successful and handled a large number of inquiries through the end of February.

However, now that winter activities have drawn to a close, Mrs. Thompson said the Snowmobile Unit is interested in finding out how the service can be improved for next winter and is looking forward to receiving comments from winter sports enthusiasts across the Commonwealth.

a Penn State University correspondence course on home greenhouses. They are the lean-to or attached, and the free standing. The lean-to is built against an existing structure. The free standing is not attached to any structure. Selection depends on your house structure and whether or not you use your home furnace for heat.

Only written comments will be considered and should be mailed to: Snowmobile Unit, Department of Environmental Resources, P.O. Box 1467, Harrisburg, Pa. 17120.

Garden plots available

Artificial heat must be provided in a greenhouse. Hot air, steam, and hot water are some ways to distribute heat. Selection of heating system depends on size of greenhouse, fuels available, cost and personal preference.

BROWNSTOWN, Pa. - The Brownstown Vo-Tech is offering to interested gardeners a plot of ground, 15 feet x 25 feet to grow vegetables. As before in the Governor's Anti-Inflation Garden Program, seeds for the garden will be made available for a nominal fee. There are 50 plots available this year and selection will be made on a first come first serve basis. If interested, contact the school at 859-1111. Leave your name, address, and telephone number.

To learn more about small greenhouse construction and management, you can study the Penn State course by mail. To enroll simply send \$3.50 to "Home Greenhouse," Box 5000, University Park, Pa. 16802. Make checks payable to Penn State.

ROHRER'S CARRY A COMPLETE LINE

OF FARM AND GARDEN SEEDS

AGRICULTURAL CHEMICALS

ORTHO UNIPEL FERTILIZER

Catalog mailed free upon request covering full line of vegetable and farm seeds.

P. L. ROHRER & BRO., INC.

SMOKETOWN, PA Phone Lanc. 717-299-2571

LOW INITIAL COST. FAST EASY ERECTION. ALL STEEL LONG LIFE.

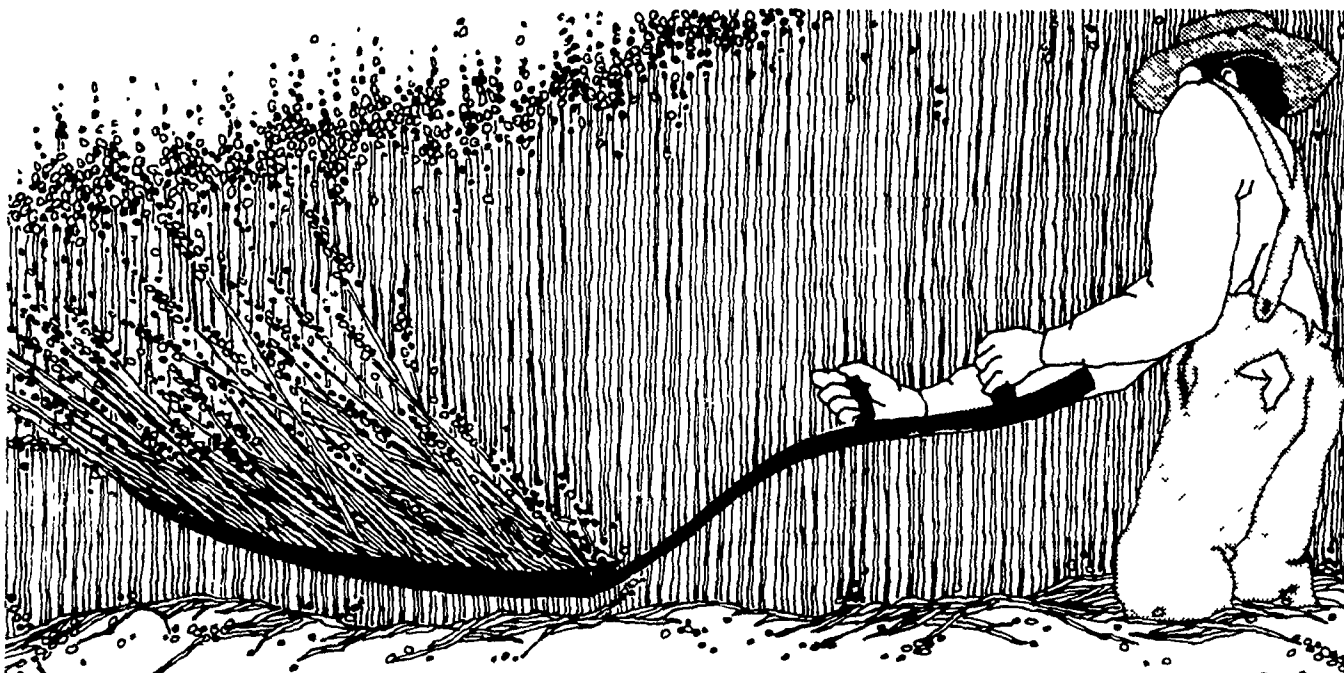
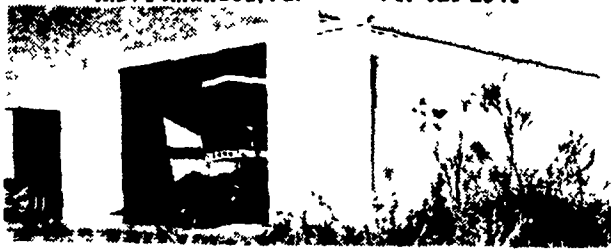
14' High Opening. Easy operating sliding doors:

- Two Widths, 40 and 48 Minimum length 50 feet
- Additions to length, in 25 sections, to whatever length you wish
- Multi-purpose building
- Optional accessories so you can have the building just right for you

For a better Farm Building deal.....it's American.

C. DONALD COX
GENERAL CONTRACTOR & EXCAVATOR

W. Ralph Cheek, Sales Manager
R.D. 1 Kirkwood, Pa. 717-529-2541



YESTERDAY'S EQUIPMENT DOESN'T HELP TODAY'S FARMER. NEITHER DOES YESTERDAY'S INSURANCE.

You wouldn't try to get along without a tractor or a baler or modern storage bins. And, if you're smart, you won't try to get along without adequate insurance.

At Future Services Insurance, we know what an enormous investment your farm represents. We also know how to protect that investment in the most comprehensive, economical way possible. With up-to-the-minute insurance against inventory losses involving equipment, livestock,

buildings and stored crops. With customized coverages to protect you against collision and liability, theft and vandalism, animal mortality and other potential disasters. With estate and retirement planning or other special needs.

We know all that. But it doesn't do any of us any good unless you give us a chance to put that knowledge to work for you. So call and ask that we come see you. Now. Before you really need us.

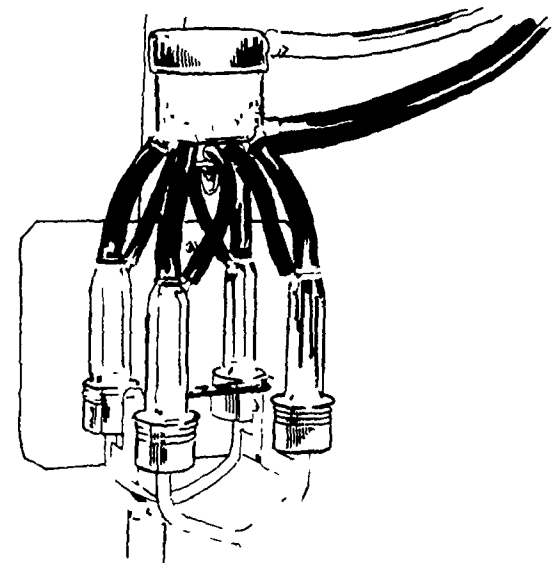
Future Services Insurance
Meeting Tomorrow's Needs Today

5 East Main Street • Mechanicsburg, Pa. 17055 • (717) 766 7621

MOST ADVANCED MILKING SYSTEM



AVAILABLE FROM "TEAT TO TANK"



C. I. P. UNIT WASHER

- All stainless steel
- Most advanced washer available
- Compact design

SPECIAL
1 - Used Sputnick
Call For Price

Come in, Write or Phone for Full Information

J. M. HORST
SERVICE CO.

Box 231, Quentin, PA Phone (717) 274-1242

Zero - PIONEER OF FARM BULK MILK COOLERS