

Crop insurance available

YORK, Pa. - Beginning with their 1976 corn crops, growers in Pennsylvania had their crop investment protection raised by some 15 percent or more, according to James Bucher, district supervisor. This same increased coverage is still in effect for 1977. Federal Crop Insurance is offering the highest guarantee per acre ever to corn farmers in Pennsylvania.

According to Bucher, many banks and other sources of production loans are expressing interest and delight at the increase in coverage, since the strengthened collateral

assignment in this All - Risk protection assists in securing credit financing, so vital in today's farming, and adds greater stability to the individual farming operation.

This Federal All - Risk insurance strengthens credit, protects investment dollars, and eliminates a loss of production expenses. Corn and other insurable crops are protected against drought, excessive moisture, hail, disease, insects, wind, flood, fire and any other hazard due to weather damage from the time it is planted until it is harvested. Tobacco is protected until it

is delivered to the warehouse.

Down the road sales efforts by local fieldmen have been stopped for 1977 due to present limited funding. However, for the time being, protection can still be obtained by interested farmers.

Complete details about the Crop Insurance Program, sponsored by the United States Department of Agriculture, are available from your Federal Crop Insurance office, located at 1721 Whiteford RD, York, Penn. 17402 - phone 755-3416. Deadline for corn is April 30, for tobacco it's a month later.

EDITORIAL COMMENTS

[Continued from Page 10]

bullheadedness is involved in this case. LARA officials are cool to the proposal that they move their garbage to a landfill on the Lancaster-Chester County line, where lots of space is available under sanitary and reasonably attractive conditions. The LARA facility in Manor Township, on the other hand, is an eyesore. What's more owners of the Lanchester facility would love to have the additional refuse since they aren't operating anywhere near capacity at this time LARA argues that the distance involved would be too costly. John Barley counters that the distance differs by only six miles. The roads to the Lanchester site near Honey Brook are much better, which should pretty well cancel the extra six miles anyway.

Taking a highly productive parcel of land out of production would be foolish to do. If LARA doesn't realize it now, they will hopefully be persuaded to other means by public opinion which thus far has been decidedly in favor of the Barleys.

Unlike LARA insists, there are other feasible and practical alternatives. On a short-term plan, the Lanchester facility should be given strong consideration. On a long-range basis, incinerators and recycling facilities should be eyed. That'll be the wave of the future anyway. And one thin LARA should keep in mind: You can't very well recycle farmland So let's do it with tin cans, glass and paper instead. Let's set a good example, LARA, not an infamous trend

'Sunshine' affects USDA

WASHINGTON, D.C. - To comply with the new "Government in the Sunshine Act," the U.S. Department of Agriculture plans to begin restrictions at an earlier stage than in the past on employee discussions about proposed actions on marketing agreements and orders.

Current regulations now forbid such communications from the close of a hearing on a marketing order action until issuance of a final order. Under the amended regulations the restriction begins at an earlier stage, at the time a notice of hearing is issued, and continues until issuance of the final decision, the stage at which it is submitted for producer approval. The rule change becomes effective March 12.

Donald E. Wilkinson, Administrator of USDA's Agricultural Marketing Service, which has responsibility for marketing agreements and orders, said

these restrictions on what are known legally as "ex parte" communications are intended to prevent government employees from responding to requests for information as to the status of pending rule - making actions on marketing agreements and orders - so that interested parties are not long as the merits of the particular action are not also discussed."

WEST GROVE FARM & HOME

Distributor Of

CENTRAL TRACTOR PARTS

Hardware — Plumbing & Electrical Supplies
New, Used & Rebuilt Tractor Parts
Fencing — Chain Saws — Tools — Tires — Horse & Dog Feed — Clothing — Footwear — Paint

GRAND OPENING SALE

MARCH 17 - 24



Pancake Day

March 17th

10 A.M.

COUPON

BALER TWINE

9000 Ft

25 Rolls Or More

\$10.50

Roll

With Coupon



101 Rosehill Ave., West Grove

Phone: 215-869-8202

READ

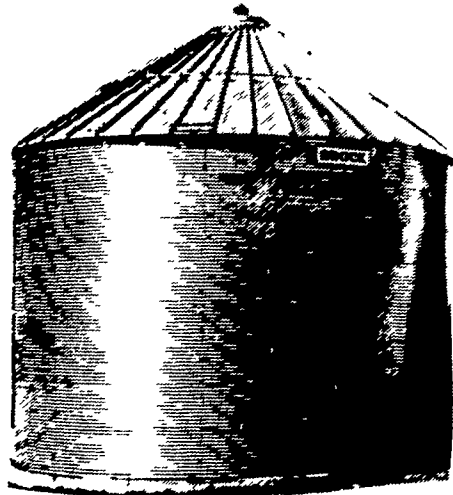
LANCASTER
FARMING
FOR FULL
MARKET
REPORTS

BROCK GRAIN BINS

NOW AVAILABLE FOR IMMEDIATE
DELIVERY AT THE OLD,
CASH DISCOUNT PRICES

MODELS THAT ARE AVAILABLE

Total Bushels Each



1 - 36' Dia.x9 ring	22,088
2 - 30' Dia.x9 ring	15,042
2 - 30' Dia.x7 ring	12,045
1 - 27' Dia.x7 ring	9,636
1 - 24' Dia.x9 ring	9,437
1 - 21' Dia.x7 ring	5,684
1 - 21' Dia.x6 ring	4,950

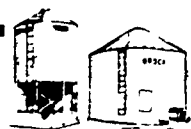
Also - 7', 9' & 12 Dia. Feed Bins in Stock
4.4 to 25 ton Capacity

Also - Cardinal Auger & Unloading Equipment in Stock
- 4", 6" & 8" Auger

Also Distributor of Farm Fan Dryers
Full Line Parts Department

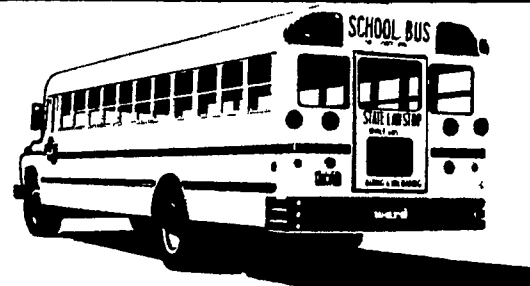
E. M. HERR EQUIP.

Sprecker Road
Willow Street, PA
Lancaster County



NEW AND USED

16 TO 72 PASSENGER



SCHOOL - CHURCH BUSES

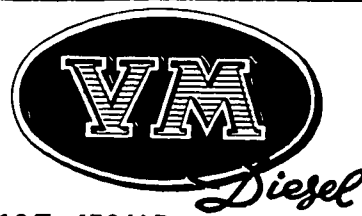
We have a large inventory of new and used School Buses available for your inspection in Lancaster. These vehicles are ideal for Church or School use as they meet all State and Federal Safety Regulations. All used buses are trade-ins received from schools or churches in Pennsylvania.

FEEL FREE TO CONTACT:

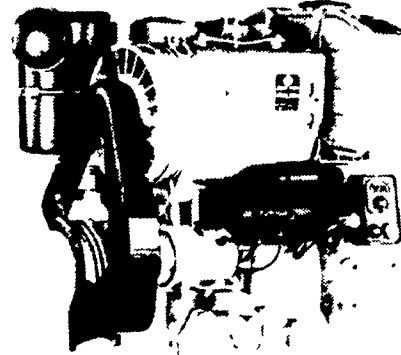
Paul Pelland - 717-397-8939

After 5 P.M. Weekends - 717-394-1578

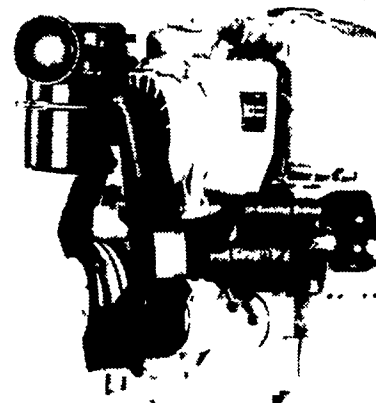
Wannamaker Enterprises - Distributor For Ward School Buses.



10 To 450 H.P.



Model 1052
18 to 32 H.P.



Model 1051
10 to 16 H.P.

USED DIESEL ENGINES

1 - 4 cyl. Perkins 1 - 371 Detroit
1 - 3 cyl. Deutz 1 - 471 Detroit
1 - 3 cyl. V.M.

Complete Sales & Service
For All VM & Detroit Diesel Engines

LEID DIESEL SERVICE

New Holland, R3

PH: (717) 354-8024