



# HEISEY FARM EQUIPMENT INC.

## INVITES YOU TO THEIR FARM MACHINERY CENTER

**Featuring**

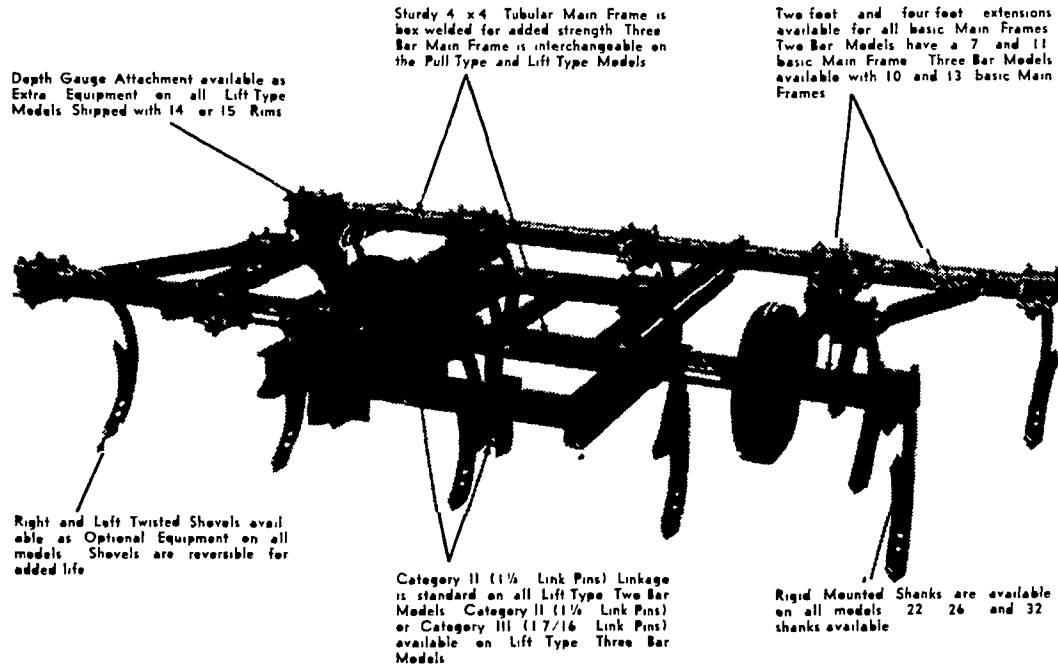
### Taylor-Way®

Disc Harrows, Chisel Plows, Subsoilers, Field Cultivators

All are fitted to do the job for a farm of small or large acreage to fit all sizes and makes of tractors

Full Year Warranty on all Equipment

We believe TAYLOR-WAY to be one of the best lines of equipment on the market today



Depth Gauge Attachment available as Extra Equipment on all Lift Type Models Shipped with 14 or 15 Rims

Sturdy 4 x 4 Tubular Main Frame is box welded for added strength Three Bar Main Frame is interchangeable on the Pull Type and Lift Type Models

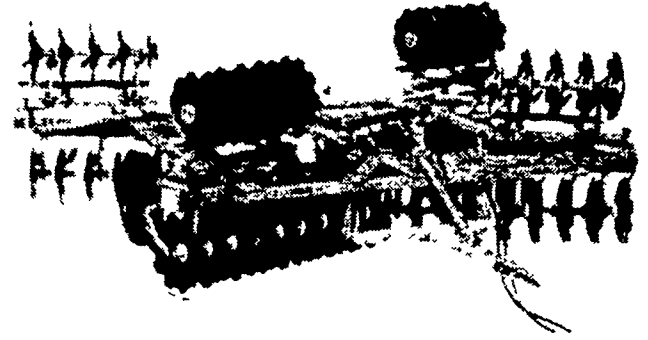
Two foot and four foot extensions available for all basic Main Frames Two Bar Models have a 7 and 11 basic Main Frames Three Bar Models available with 10 and 13 basic Main Frames

Right and Left Twisted Shovels available as Optional Equipment on all models. Shovels are reversible for added life

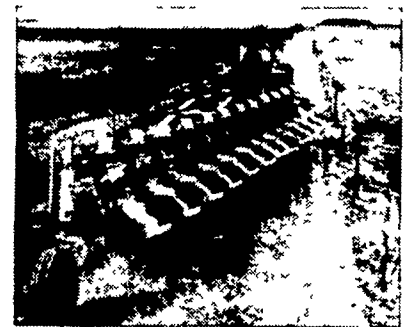
Category II (1 1/2" Link Pins) Linkage is standard on all Lift Type Two Bar Models. Category II (1 1/2" Link Pins) or Category III (1 7/8" Link Pins) available on Lift Type Three Bar Models

Rigid Mounted Shanks are available on all models 22 26 and 32 shanks available

Fold over Wings for transporting or more weight per disc when plowing in tough soils.



## Kverneland plows



in any size for any demand

Mounted  
Semimounted  
On-land  
Pull type  
Reversible



**With automatic reset bottoms for Non Stop Plowing**

Saves time, cuts fuel cost,

**The simplest and most efficient reset on the market**

- Smooth quick and reliable
- Non hydraulic and few moving parts
- Any number of bottoms can be lifted out of work and put in the "park" position
- A variety of bottoms for trash plowing, corn stalks, general sod and stubble
- Over 20,000 plows in use in North America today



### Leyland Tractors Diesel

*The start of a new era*



If you are concerned about constant increases in the cost of running your farm look closely at Leyland to help keep your costs in line

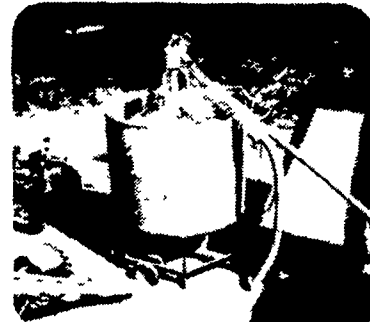
Leyland Tractors give you lower initial cost all purpose hydraulics more versatility high torque engines, fully independent PTO gear ratios for your needs simple low cost maintenance and great dealer back-up on parts and service

We invite you to compare these fine tractors with any others in their class before you buy and be satisfied for years to come

- ★ Excellent serviceability
- ★ Big performance plus economy
- ★ Geared for the job
- ★ Excellent operator comfort and convenience
- ★ All purpose hydraulics
- ★ Quality at a price you can afford.

LOOK AT LEYLAND THEN COMPARE!

## GT Tox-O-Wik Dryers



- Model 270 - 250 bu cap
- Model 370 - 350 bu cap
- Model 570 - 500 bu cap

Two Basic Processes are involved in drying grain with a GT TOX O WIK Recirculating Batch Grain Dryer. These two processes function independently yet simultaneously to dry grain as evenly and gently as possible

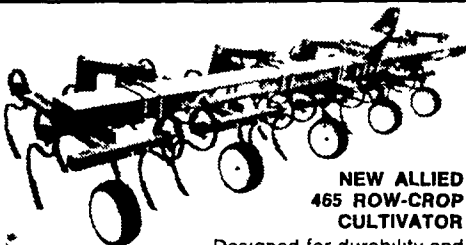
One of the Processes is the movement of the grain itself. The round bin and cone shaped bottom are a part of the GT TOX O WIK Dryer design for making this process more efficient. The patented agitator arms keep the grain constantly moving downward. As the grain reaches the bottom it is picked up by the recirculating auger which carries it to the top of the dryer and discharges it back into the dryer

The Other Process involved in drying is the movement of the heated air. Heat from the burner combines with air supplied by the fan. This heated air is then forced into the plenum chamber and out into the moving grain

The GT TOX O WIK Dryer, simple in design and operation, is built of high quality materials and factory pre tested for years of trouble free drying. It's your assurance of dependability and service for years to come



**NEW ALLIED TROUGH ELEVATORS**  
There's extra reach with the Allied design, because you can move in closer. Choice of PTO, gas engine or electric drives



**NEW ALLIED 465 ROW-CROP CULTIVATOR**

Designed for durability and ease of operation. Spring steel tines on telescoping bars for row width setting without tools. 4, 6, 8, or 12 row models. Optional folding wings available

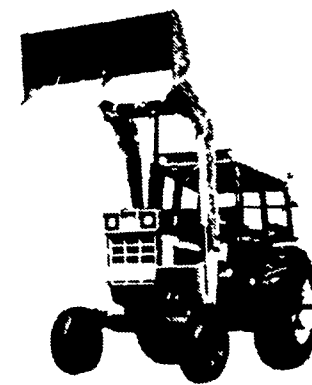
**NEW ALLIED AUGERS**  
Improved for safety, they'll move 500-3600 bu/hr. Choice of 12-34 utility augers (4", 5" or 6" dia.) or 28-52" transport auger (6", 7" or 8" dia.)

### FOLLOWING HARROW

Adjustable spring tines give deep penetration, vibrating action for superb seedbed preparation. Mounts to tillage tools with single, heavy 2 1/2" square carrier arm. With solid or wing-type frames

### ALLIED SERIES 60 QUICK-LATCH LOADER

Latches permit mounting/demounting in seconds. Choose five tine or combination buckets, grapples, tines, dirt plates, etc. for a variety of jobs. Fits over 200 tractor models



the **LOW COST!**

B-400/B-4/B-5 Series



- Quality 5 foot rotary mower in 3 point lift and trail type models
- Needle bearing type U-joints heavy duty gear box, rugged construction
- Heavy rotor bar, free swinging, spring steel knives. Flywheel optional
- Hot rolled steel formed and welded main housing
- Full length runners
- Swept-back front
- Shear pin drive

We are a dealer for the complete line of equipment and parts distributed by Allied Farm Equipment. The above items plus many other items are all distributed by Allied which now has a warehouse in Harrisburg. It will pay you to contact us before you buy. Take time to look this equipment over.

**Heisey Farm Equipment Inc.**

Located just off Rt. 343 1/2 mile S. of U.S. 22 at Shirksville, PA

Bus. Hours: 7 A.M. TO 5:30 P.M.  
Sat. Till 2:30 P.M.  
Evenings By Appt.

Phone: 717-865-4526 - Business

717-865-2743 - John Moyer, Shop Foreman - Sales

717-274-1963 - Warren Brown, Mechanic - Sales

717-867-1776 - Luke High, Mechanic - Sales

717-865-4526 or 865-4289 - A. C. Heisey