

PENNA. DAIRYMEN ACHIEVE GREATER MILK PRODUCTION WITH PURINA'S "NEW" HI-O COW CHOW 36

BURK—LEA FARM, CHAMBERSBURG, PA.



Stanley and Wilbur Burkholder in their milking parlor.

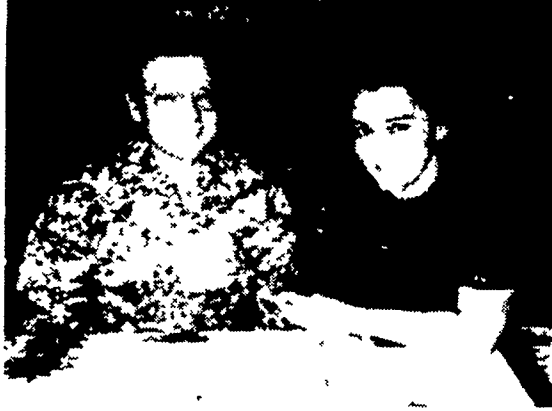
Wilbur and Stanley Burkholder operate this 84 cow dairy herd and have thus far to say about Purina. "We have been on Purina Cow Chow 38 Percent B for some time and have been very happy with the results, however, when we switched to High Octane 36 Percent B in July, I have seen an increase of .3 percent in my butterfat test.

	No. of Cows	Pounds of Milk Per Cow
Before Hi-0 36 Percent B	86	42.8
4 months after	84	50.9
INCREASE 8.1 pounds of milk		

Their roughage program consists of corn silage, haylage and hay. Purina Test Cow 18 Percent B is fed in a magnetic feeder to the early lactating and high producing cows. This allows for a better feeding program in their freestall operation.

Milk production is up and our cows really have an appetite.

PAUL BISHOP, PERKASIE, PA.



Paul and Betty Bishop review their DHIA records on a monthly basis.

Paul and Betty Bishop began feeding Purina in April 1974. Since that time the Bishop family has made considerable increases in milk production. In August 1976, they switched from Purina Cow Chow 38 Percent B to NEW HI-0 36 Percent B. The reason for the change? Paul comments, Purina District Manager Ike Yates suggested Hi-0 36 Percent B would give me more milk than I was getting. Having reached 600 pounds of butterfat, I decided my cows needed something extra to keep climbing.

As you can see, they continued their climb.

	DHIA PRODUCTION RECORD				
	No. of Cows	Percent Milking	Lbs. Milk	Lbs. BF	Percent B.F.
August '76	55.4	93.4	15142	593	3.9
December 1976	61.9	89.1	16235	637	3.9

The records show the improvement and a new stepping stone for the Bishops' toward higher production per cow.

BISHCROFT FARM, FOUNTAINVILLE, PA.



Two brothers Herman and Walter Bishop in front of their dairy barn.

Two brothers, Herman and Walter Bishop, operate a 140 dairy cow farm just north of Doylestown.

Before feeding Purina in May 1976, their grain ration consisted of soybean meal — vitamin-mineral premix. They had never fed Purina before that time.

When asked why they changed to Purina, Herman replied, "In the past five years we had been on a production plateau and just couldn't move off it. After listening to what Purina had to offer it looked as if Hi-0 36 Percent B could help us.

	DHIA PRODUCTION RECORDS	
6-75-10-75	average production per cow	44.88 pounds
6-76-10-76	average production per cow	51.73 pounds
12-76	average production per cow	58.80 pounds

Increase of 7.7 pounds per cow per day. At the same time the butterfat test average increased .1 percent.

UPSTREAM FARM, EASTON, PA.



The attractive Upstream Farm Milk Store, which is always busy.

Upstream Farm is a family corporation where everyone is involved, including the wives, who play a major part in the total operation.

The 200 cows are managed in a free-stall — four group system with a rotary milking parlor. Each group is fed according to their protein and energy needs based on production requirements.

Upstream Farm began feeding Purina in April 1976, prior to that they fed a soybean-premix. Since that time they have had a tremendous increase in milk production. They are a Purina Program Feeder and rely heavily on our recommendations. Because of their confidence in Purina products, they changed to Hi-0 36 Percent B in September.

	DHIA PRODUCTION RECORD			
	No. of Cows	Lbs. Milk	Percent Fat	Lbs. Fat
April 1976	220.6	12,397	3.9	481
December 1976	194.6	14,100	3.8	526

DAVID PAUL, BATH, PA.



DHIA records are a major tool for this dairyman, David Paul.

David operates a dairy farm just north of Bath. David's situation is a little different than most dairymen today; he had little farm experience prior to going into business. In fact, David grew up in Philadelphia and went on to teaching before he decided to enter the dairy business.

He has had his problems as all dairymen do, however, he doesn't let them get him down but keeps pushing, always trying to do better. An example of this is a small blackboard at one end of the barn which list the cows that are open. David says this stares at him everytime he goes in the barn and as a result he watches those cows a little closer.

	DHIA Production Records			
	No. of Cows	Lbs. Milk	Percent Fat	Lbs. Fat
July 1976	13,824	3.7	496	
January 1977	15,378	3.7	565	

STONE HART FARM, ST. THOMAS, PA.



Carl Hartman and Bill Stoner.

Carl Hartman and Bill Stoner from St. Thomas, PA operate a 115 cow dairy farm. One of the things which they are pleased with is the fact that 36 first calf heifers are in the milking lineup. The heifers were raised on the Purina D & H Program.

Today their feeding program consists of corn silage, haylage, high moisture corn and Hi-0 36 Percent B concentrate. After switching to Purina Cow Chow 38 Percent B from soybean meal, they had an excellent increase in production and switched to Purina Hi-0 when the opportunity to make more milk was shown to them.

	No. of Cows	Pounds of Milk Per Cow
Before Purina Hi-0	114	42.8
One month after	116	44.8
Three months after	115	49.0

We are very pleased with Purina Hi-0 36 Percent.

High Bros.

PHONE: 354-0301
GORDONVILLE

John B. Kurtz

PHONE 354-4616
665-6023
RD3, EPHRATA

Franklin Feed and Supply Co.

PHONE: 717-264-6148
Chambersburg, Pa.

McCracken's Feed Mill, Inc.

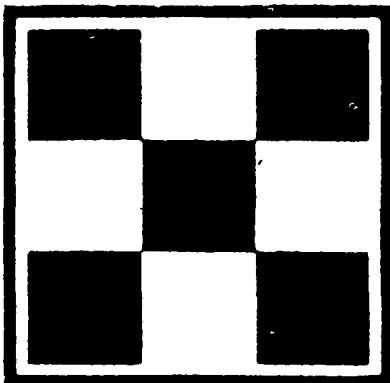
2 NEW CHARLOTTE ST., MANHEIM
PHONE: 717-665-2186

Ira B. Landis

PHONE: 665-3248
BOX 276, MANHEIM RD3

Wenger's Feed Mill Inc.

PHONE: 367-1195
RHEEMS



John J. Hess, II, Inc.

PHONE: 442-4632
PARADISE

West Willow Farmers Assn., Inc.

PHONE: 464-3431
WEST WILLOW

Umberger's, Inc.

PHONE: 717-866-2324
RICHLAND, PA 17067

Umberger's Mill

PHONE: 717-867-5161
FONTANA, PA. 17042

W. E. Manifold & Sons

PHONE: 717-382-4805
FAWN GROVE, PA 17321

Lehman Feed Store

PHONE: 717-528-4151
York Springs, Pa.