

# Public Sales Register

mile West of Rebersburg, Pa. Glick, Gibboney, Snyder, Auctioneers.

THURS. MARCH 24 - 11:30 A.M. Dispersal of Registered and Grade Holsteins located 1 mile North of Gap, Lancaster, Pa. Same place on Wed. March 30 - 12 P.M. Full line of Farm Equipment. Sale by Benuel M. and Miriam Stoltzfus. Steve Petersheim and John Umble, Auctioneers.

THURS. MARCH 24, 11:00 AM. - Public sale of farm machinery (11:00 AM) and registered Holsteins. On the farm located 1-1/2 miles southeast of Hampstead on Route 88 (Black Rock Road) in Baltimore Co., Md. Ten miles west of Interstate 83. Charles M. Cole, owner. A. Doty Remsburg, Sale Mgr. and Auctioneer.

THURS. MAR. 24 - Public Sale of Farm Implements and Tools, 1 mi. North of New Shaferstown, Berks Co., Pa. Sale by John Derr & Harry Derr. John Breidegam, Auct.

THURS. MAR. 24 - 12:00 Noon. Public Sale of Valuable Real Estate. Located 4 mi. South of Everett, Pa. Bedford County off road to Mench at the late Herman Ritchey farm. Sale by Eric G. Ritchey. Stanley Claycomb & Merle Mishler, Auct.

THURS. MARCH 24 - 11 A.M. 10th Annual W. Va. Performance Tested Bull Sale, Reymann Memorial Farm, Wardensville, W. Va. 220 Bulls Consigned (125 Angus, 53 Polled Hereford, 4 Hereford, 5 Charolais, 28 Simmental Cross, 2 Red Angus, 1 Maine Anjou Cross, 1 Chianina Cross, and 1 Marchigiana Cross. Col. Morris Fannon, Pennington Gap, Va. and Col. John Spiker, Weston, W. Va., Auctioneers.

FRI. MARCH 25 - 12 P.M. Stocker and Feeder Sale at the Lancaster Stockyards, Lancaster, Pa.

FRI. MARCH 25, 12 Noon. Public sale of farm equipment. Located along Route 741 in the village of Lam-

eter, Pa., Lanc. Co. on the Fire Company Community Grounds. Ira H. Livengood owner. Carl Diller, J. Everett Kreider, Auctioneers.

FRI. MARCH 25. Bi-Sue Farms, complete dispersal, Lowman, New York. 80 head

registered Holsteins, DHIA records, 3 tractors, full line of farm machinery. William and Suzanne Hill, owners. Sales Manager, D. O. Rockwell and Associates, Troy, Pa.

FRI. MARCH 25 - 11 A.M. - 14 Annual Spring Sale, Kempton, Pa. All livestock; 5:30

## WALTER KRALL ESTATE PUBLIC SALE SATURDAY, MARCH 12, 1977

9 A.M.

Real Estate sold at 2 P.M.  
123 ACRE FARM, FARM MACHINERY, ETC.

On the Premises in Jackson Township, Lebanon County, 2 1/2 miles South of Myerstown Airpark. Township Route 560.



(Not an up-to-date photo. Less trees on property)

Real Estate consists of 123 acres of fertile, level limestone soil including approximately 12 acres of woodland.

3 Story brick house. First floor consists of 6 rooms with center hall and open stairway. 2 rooms have built in corner cupboards and one room a fireplace. Second floor consists of 6 rooms and large center hall. Third floor consists of a large attic plus 2 nice rooms. There is a cellar beneath the cellar of this house.

Attached to the Main House is a 2 1/2 story Brick Summer House. First floor is one large room with a walk-in fireplace and bake oven with folding doors. Second floor has 2 rooms. Nice Attic. The Summer House has a unique arched brick cellar with a brick floor.

On the Premises a 150x55' Bank Barn built in 1890 by the Krall's. The barn is in good repair. There is also a 2 story pumphouse, a corncrib and other buildings.

### NOTE:

This farm has been in the Krall Family since the early 1800's. It contains a lot of unique features and has many possibilities.

Inspection of Property any Saturday  
For information phone: 717-866-2822

### PERSONAL PROPERTY

Clean 1969 98 Olds. 4 dr. sedan; Farmall 450 torque ampl. and fast hitch; Farmall 340 fast hitch; 4 bottom plow, cultivator; 2-row Mc. corn planter, above are F.H.; McCormick 10 grain drill (with cylinder); Mc. chisel; Mc. 6 ft. combine with engine; rubber tired wagon with Smoker grain bin; 38 ft. Smoker special elevator. The following horse equipment-Bachman float wagon, 2 box wagons, old pot. planter and digger, pot. plow, 2 steel Beam plows, cultivators, etc. Asst. harness and team saddle.

Large pile of old barn logs, old door and shutter latches, bag wagon, 2 hole corn sheller, corn cracker, old gas engines, straw bench, old block wagon jack, blacksmith outfit, wall drill, poultry equipt. Jewel and other wood burning stoves, work bench, iron kettles, butcher bench and grinder, barrels and benches, hog troughs, early jig saw, nice Schnitzel bunk, old Beam scale, dehorner, cant hooks, and asst. hand tools, endless thresher belt, stalk buster, large old cider press, lots of scrap iron and lots of other interesting old items.

Conditions by,  
**WARREN & JOHN KRALL**  
Administrators

Weik & Buffenmyer (Aucts.)  
Hoover, Ogurcak & Brandt (Clerks)  
Henry Steiner, Attorney

## PUBLIC AUCTION

SATURDAY, MARCH 12, 1977

10:00 A.M.

3rd ANNUAL FARM MACHINERY  
CONSIGNMENT SALE

TRACTORS, TRUCKS & OTHER EQUIPMENT

The Elms Near Auction Barn, Vincentown, N.J., Exit 7 New Jersey Turnpike, South of 206 to Vincentown.

Consignments still wanted.

**RICHARD ALLEN**

Auctioneer

609-267-8382

## PUBLIC SALE

Of Farm Machinery, Dairy Cattle, Dairy Equipment, Hay, Straw, Corn, Oats, Poultry Equipment and a few Household Items.

SATURDAY, MARCH 12, 1977

9:00 A.M. Sharp

Located 1/2 mile South of Selinsgrove, Pa. along old Route 11-15. Just South of Route 35 exit on new Selinsgrove by-pass (Snyder County).

### FARM MACHINERY

826 Int. diesel tractor with 2 point hitch with hydrostic drive, Int. 544 gas tractor with 3 point hitch, Int. super C tractor, Int. No. 56 silage blower, 9 in. blower pipe, Oliver 10 ft. transport disc, N.H. super 717 forage harvester with corn head, Mounted cultivators and side dressers for super C tractor, Int. 550 16 in. 5 bottom semi-mounted plows, Int. 440 16 in. 3 bottom mounted plows. Int. No. 56 4-row corn planter with Gandy attachments, Int. 990 9 ft. haybine, 200 gallon Century sprayer, Int. 205 combine with 10 ft. head and pick up reel with cab, used 4 seasons; Lely ground driven fertilizer spreader, 50 ft. 6 in. endless belt, Int. 234 mounted corn picker, Int. 2001 loader with hydraulic bucket, N.H. No. 8 self unloading wagon, Int. 440 hay baler with thrower, Kewanee 500 32 ft. bale elevator with motor, N.H. 185 bu. tank manure spreader, Int. 315 12 ft. cultimulcher, Gehl No. 65 grinder mixer, John Deere portable No. 4 B corn sheller with cob stacker, 16 ft. aluminum elevator, N.H. No. 56 hay rake, 3 gravity wagons, Int. No. 10 16 hoe double disc grain drill, Hydraulic cylinders, 8 ton wide track wagon with bed, 2 section spike tooth harrow. 2 Oliver 12 ft. harrows, N.H. wagon with Hostetler bale bed, 2 electric fences, metal cattle racks for Chevrolet pick up, new 15-5-38 tractor chains, N.H. No. 36 crop chopper, water trough, Int. 100 balanced head mower 2-point hitch, truck box for storage, saw buck, air compressor, hog feeder, front and rear tractor weights, 55 gallon Ecensial Lube, new 16-9-38 tractor tire, 3 1/2 hp. gasoline motor, two 10 ft. by 16 ft. range shelters.

### 60 HOLSTEIN DAIRY CATTLE

44 milk cows and 16 heifers from 3 months of age to freshening age. Herd is certified and accredited and animals are mostly grades. Cows are in various stages of lactation. Some cows and heifers due around sale time. This herd consists of many first and second calfers. 1 Angus Holstein cross bull.

### MILKING EQUIPMENT & BARN EQUIPMENT

Universal rotor milking pump, Universal pipeline milker with 4 units, 500 gallon Girton milk tank, electric fogger, Sunbeam cow clippers, cow bed extenders, two 30 in. barn fans, feed carts, 24 water cups and water line, 44 cow mats, Badger gutter cleaner with 3 hp. motor and 265 ft. chain, 7 calf stalls, 44 inverted V stanchions and 2 metal box stalls.

1957 Chevrolet Truck with 14 ft. flat bed dump.

Two 2450 bu. Round Wire Corn Crib.  
**GRAIN, CORN, HAY, STRAW, SILAGE**

100 ton or more of ear corn, 1200 to 1500 bu. of oats, some from certified seed last year, 4000 to 5000 bales first cutting hay, 1200 bales of wheat and oats straw, several tons corn silage.

### LEGHORN HENS AND POULTRY EQUIPMENT

600 to 700 Leghorn laying hens, 24 in. Poultry fan, egg washer, egg grader, and some other poultry equipment.

### HOUSEHOLD GOODS, ETC.

Gun Cabinet, Dressers, twin tub washer, copper kettle, large butcher kettle, misc. items.

Auctioneer Note: Machinery is mostly in real good condition and ready to go to the field.

Terms: Cash or good check. Lunch Stand. Tent.

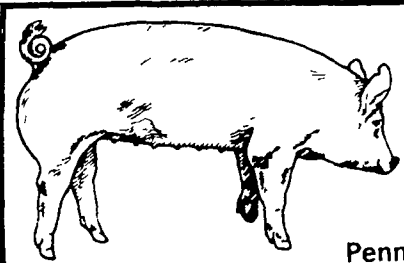
Owners,

**RICHARD AND BETTY SMITH**

Phone 374-8291

Auctioneers: Smith and Eash

Owner and Auctioneer not responsible for accidents.



## YORKSHIRE INVITATIONAL SHOW & SALE

Sponsored by  
Penna Yorkshire Coop  
Assoc. Inc.

To be held at the Lebanon Area Fairgrounds,  
1 1/2 miles South of Lebanon, Intersection Corn-  
wall and Evergreen Roads.

**SATURDAY, MARCH 19, 1977**

Show - 10:00 A.M.  
Judge - Gene Sweigart  
Sale - 1:00 P.M.

20 Yorkshire Bred Gilts  
10 Yorkshire Boars  
Approx. 30 Yorkshire Open Gilts

Auctioneer:  
**ABE DIFFENBACH**

For Catalogs

Write or Call **LEON L. ARNOLD, SEC.-TREAS.**

RD1, Box 54, Lebanon, PA 17042  
717-273-5880

## ALLEGHENYVILLE AUCTION HOUSE

ANTIQUES AND COLLECTIBLES  
EVERY SATURDAY, 7 P.M.

Located 3 miles East of Rt. 222 on Rt. 568  
near Adamstown.

Thus Week and Next Week Contents of Antique Shop from Upstate New York and consignments including crocks and jugs, many with blue decoration; two old amusement park postcard machines; primitive plank pine table; cottage bedroom set; early ladderback and other rockers; small oak ice box; painted oak hoosier; oak plant and candle stand; Cathedral radios; Seth Thomas O. G. clock; wood hay fork; yarn winder; table top crank sewing machine; 1887 primitive oil and other paintings; pair carriage lamps (electrified); Beechnut tin box; Bean bottles; 12 hole round candle molds; graniteware coffee pots; cherry pitters; apple peelers; misc. tools; primitive splint egg basket; cow bells; sterling ware; miscellaneous frames and pictures including Chandler print; doll dresser; alarm clock; glass banks; nice glass and china including Shirley Temple pitcher and art nouveau cruet, set oak chairs.

Inspection from 3 P.M.

For consignments or information call:  
215-682-7863 or 777-9094