

Public Sales Register

Strausstown, Berks Co. Vernon J. Snyder, owner. Bixler & Kramer, Auctioneers.

SAT. MARCH 19, 1977, 11:00 AM - Public sale of 100 acre farm, approximately 90 acres in high state of cultivation, balance wooded, some timber. Farm Equipment and household items and collectibles. Along the Klingerstown to Pitman Road in the Village of Rough and Ready; 3 miles east of Klingerstown, 4 miles west of Franklin Square and Route 125, Upper Mahantongo Township. Schuylkill County, Pa. 45 miles northeast of Harrisburg. Guy W. & Olive M. Erdman, Owners. George N. Deibert, Auctioneer.

SAT. MARCH 19, 11:00 AM. Public auction farm equipment and tools, household items. Sale by B. Landis Huber. 1 mile north of Lititz along Bomberger Road. Elmer Murry, Auctioneer.

SAT. MARCH 19, 1:30 PM. Public feeder pig sale. East end of Frystown, Pa., 1 mile south of U. S. 22 on 645 and 6 miles north of Myerstown, Pa. Norman M. Martin, Owner. G. Harvey Weik, Auctioneer.

SAT. MARCH 19, 1977, 10:30 AM. Located in Blair Co., 7 miles east of Altoona, Pa. or

about 8 miles northwest of Water Street, Pa. in Sinking Valley. 6 tractors, self-propelled combine and haybine and a full line of machinery. Gerald W. Otto, owner. Glick and Gibboney, Auctioneers.

SAT. MARCH 19, 1:30 PM. Public feeder pig sale. East end of Frystown, Pa., 1 mile south of U. S. 22 on 645 and 6 miles north of Myerstown, Pa. Norman M. Martin, Owner. G. Harvey Weik, Auctioneer.

SAT. MARCH 19, 11:00 A.M. Public auction of farm machinery, mixed hay, household items, etc., located 2 miles southwest of Womer's Store, Mt. Pleasant Mills, R. D. Turn west off Route 104 at Womer's Store, take first blacktop left and another left at top of hill on dirt road to first farm on right - watch for sale signs. Ross R. Witmer, Owner. Earl Eash, Auctioneer.

SAT. MAR. 19 - 11:30 A.M. Public Auction of Farm Machinery. Located 8 mi. East of Gap; 6 mi. West of Coatesville, Pa. Terms by John Kennel Jr. owner. Steve Petersheim, Auctioneer

SAT. MARCH 19, 10:00 AM. Public sale of farm machinery and household goods. 1 mile east of Hessdale off Route 222 along

Bunker Hill Road or 3 miles southwest of Strasburg. Harold S. and Helen M. Hess. Lloyd Kreider and Randal Kline Auctioneers.

SAT. MARCH 19, 1977. Earl J. Zechman, Marion Township, Berks County, Pa. 1-1/2 miles north of Stouchsburg. Public sale of farm equipment, feeder

cattle, household furnishings. Carl S. Buf-fenmeyer, Auctioneer.

SAT. MARCH 19 - Public sale of farm machinery, feeder cattle and pigs, household goods. Located at R. D. 1, New Bloomfield, Perry County, Pa. A. J. Fosselman, Owner. Art Kling, Auctioneer.

SAT. MAR. 19 - 12 Noon Special Horse Sale at the Danville Livestock Market, located old Rt. 11, Danville, Pa. Bob Biel, Manager.

SAT. MARCH 19, 10:00 AM - Public sale of real estate, household goods and antiques. Located on School Lane, R. D. 1, New Holland, Pa. one block off of Route 23 behind Good's Furniture Store. Mrs. Edith Good, owner. Martin Auctioneers, Inc.

SATURDAY, MARCH 19, 1:00 P.M. - Public sale of farm machinery, stock

truck, feeder cattle, horses, grain. Circle C. Ranch, owners. Long Bros., Auctioneers. located 1/2 mile east of Mifflintown, Juniata Co., along Old Route 22.

SAT. MARCH 19 - 9 A.M. Public Sale of Household Items, Antiques, Farming Equipment and Tools located 6 miles South of Lancaster, 2 miles South of Conestoga, along River Corner Road, close to the River Corner Mennonite Church. Sale by Susie S. Geib Estate (also known as Sue Geib); Herbert Ziegler, Executor; Rufus Geib and Raymond Miller, Auctioneers.

HEMPSTEAD FARM DISPERSAL

Robert & Janice Landis - Owners

60 - Registered Holsteins - 60

Friday, March 18 (11:00 a.m.) Lancaster, Pa.

Sale at the farm located 1 mile east of Lancaster on Rt. 30 East. Get off at Hempstead exit. Follow signs to farm directly behind Holiday Inn East

Featuring This Daughter-Dam Pair

Dam - 2E With 21,000



REM-ROCK HAGEN IVY (2E)
365d 19 365 milk 672 fat
305d 21 500 milk 700 fat

Her dam was an own daughter of Osbornedale Ivanhoe. She is bred to Elevation

Daughter - VG Astronaut



FOUR CORNERS ASTRONAUT KATIE (VG at 2y)
2-2 199d 7 700 milk 300 fat (Inc)

Her July Elevation heifer calf sells and she's due again to Elevation in July!

7 Elegant Elevations Sell



ROUND OAK RAG APPLE ELEVATION (EX-96-GM)
PD +1353M +43F PDT +1 45 TPI +391

- * An Elevation from a VG 87 Dark Leader with 700 fat and the next dam is by Apollo
- * A 2-year old Elevation from a Kingpin with 16 113 4 6% 749 this heifer is milking 60 lbs a day!
- * An Elevation yearling from an EX dam with 18 804 milk and over 100 000 Milk lifetime
- * A July 76 Elevation from a VG 88 Astronaut and next dam is 2E with over 21 000 milk
- * A fancy Elevation yearling from a VG Astronaut 3d dam is a 2E 92 Marquis with over 23 000 milk
- * And many more cows bred to Elevation!

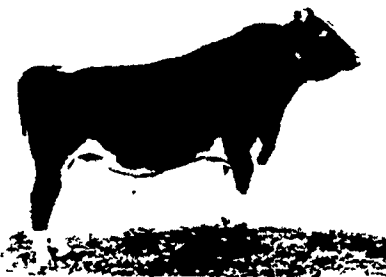
5 Top Astronauts (all Very Good)

PACLAMAR ASTRONAUT (VG-89-GM)

PD +819M +25F PDT + 80 TPI +229

- * Four of the classified Astronauts are scored 88 87 and two at 85
- * A VG-87 Astronaut with two records over 20 000 milk and 800 fat next dam VG with 700 fat Due June 19 to Elevation AI

- * Another VG Astronaut with 625 fat as a 4-year-old the 2d dam is a 2E-92 Marquis with over 23 000 milk Due before the sale to Elevation She sells with her two daughters a Double Triune due in May and a yearling Elevation



Herd was classified in December with
2 Excellent 9 Very Good 12 Good Plus

Abe Diffenbach, Auctioneer
Carl Diller & Norman Kolb

Dale Hoover
pedigrees & ringman
Phone 717-354-4341
or 717-397-5538

Robert E. & Janice Landis, Owners
1804 Hempstead Rd.
Lancaster, Pa. 17601

Don't miss this sale if you need good young registered cows with full pedigrees. Herd is TB and blood tested. Motels available nearby - catalogs available - Lunch will be served by the Witmer Fire Co. Ladies Auxiliary.

Also for a neighbor, Frank Hershey, Ford 5000 Diesel tractor; Massey Ferguson 65 tractor; Ford 3-bottom plow; Sauder manure loader.

New Holland No. 477 7' haybine; New Holland No. 67 baler; Badger chuck wagon; Massey Ferguson chuck wagon; New Holland chopper with corn and hay heads; Badger blower; Ford 7' grass mower; two flat wagons, one a New Holland; Smoker elevator; Case 28 transport disk, cultipacker; trailer sprayer; Black-Hawk corn planter.

Liquid tank spreader; liquid manure pump, Ely-Pinto hay rake; double stainless steel wash tank; 1 1/2" glass pipe for 4-stall milking parlor; Arovent hay fan with 5 h.p. motor. All farm equipment will be sold immediately following sale of cows

GREAT PUBLIC AUCTION

For MRS. RUTH E. PENYAK
6th Ave., Alpha, N.J.
CHOICE ANTIQUES-COLLECTIBLES
SIGNED SPINNING WHEEL
DOLLS-TRAINS-CLOCKS

Alpha, N.J. is on Rt. 519 in Warren County, N.J. about 3 1/2 miles Southeast of Easton, Pa.

SATURDAY, MARCH 12, 1977

9:30 A.M.
Rain or Shine

FURNITURE: Signed Spinning Wheel A.O.H. and dated 1790, 3 jelly cupboards (1 is stenciled), 2 blanket chests, Jenny Lind bed, oak med. cabinet, several oak rockers & pressbacks, 11 trunks, oak hall rack, 2 walnut drop leaf tables, 2 cherry dropleaf tables, rug making spinning wheel, 6 ft. wood Liberty Bell easel, 2 brass beds, cherry tobacco show cabinet-w/bowed glass front.

GLASS, CLOCKS, CROCKERY: Cut glass pitcher & 4 glass, cut ice bucket, cut knife rest, Scude flow blue platter, 30 demi. cups & saucers, French porcelain clock raised in gold dated 1890, New Haven gingerbread clock, others, signed Fulper 3 gal. jug, signed T. G. Dand 1 gal. crock Easton, Pa., 25 other crocks & jugs many decorated, 2 M. & W. Improved lamps dated 1896 & 1900 w/hand painted globes, hanging gas lamp, 2 leaded lamps w/paneled shades.

PRIMITIVES: Dated 1865 folding hand lantern, fancy round butter mold, 3 Seitz beer bottles Easton, Pa., 12 elephants (1 Mech.), cast iron dogs & horses, old bar room cast iron turtle ashtray, broad axe, lg. copper apple butter kettle all riveted, Christian Feigenspan beer tray, lg. copper flour can & boilers, horse ties, very ornate Cox & Bros. wood stove dated 1850, glass & iron banks, 3 old dolls, 1 Lionel train No. 2037, Commodore Vanderbilt Mech. train by Marx., Chalk Scottie dog, much in advertising on tinware, sterling silver pc., and so much more. This sale list seems endless. This is only a very partial listing. Not responsible for accidents.

Terms: Cash or a good check.
Lunch stand.

MRS. RUTH E. PENYAK
(201) 454-6864

Arthur Hanna: Auctioneer
Bloomsburg, N.J.
(201) 993-7862