

Public Sales Register

SAT. MARCH 12, 1:00 P.M. - Public sale of 600 head feeder pigs, 3 way cross. Terms by John J. Zeiset, R. 2, East Earl, Pa. Elton & Alvin Horning, Auctioneers.

PUBLIC SALE OF VALUABLE REAL ESTATE ON SATURDAY, APRIL 9, 1977 at 2 P.M. sharp

At RD 1, Wrightsville, Pa. on the Craley-Bull Run Road in Lower Windsor Twp. The undersigned will offer at public sale the following:

REAL ESTATE

Approx. 8½ acres of land improved with a 2½ story frame farm house with 7 rooms & bath, oil heat, well water-hand dug well, ground cave, summer house, wagon shed. Also located on this tract of ground along the Craley-Bull Run Road are 2 dwellings, each 1½ story with brick siding, each having 4 rooms & bath, heated by oil forced hot air heat, well water, partially cemented basements. The ground is approx. ½ farming and ¼ in pasture and woodland. This is an ideal place for someone to keep horses, do a little farming or gardening, a real good investment type piece of real estate. It could be used in building & in various other ways. Houses are in good condition throughout, must be seen to be appreciated. Will be open for inspection on Saturday, April 2, 11 A.M. to 2 P.M., on day of sale or by special appt. phone 244-3161 or call auctioneer.

Terms: 10% down, balance in 60 days. Other conditions will be made known on day of sale. Not responsible for accidents on day of sale. If on the market for real estate of this type, be sure and attend this public sale.

ROY I. FILMORE
LARICKA M. FILMORE
Owners
Jacob A. Gilbert,
Auctioneer
Phone 252-3591

SAT. MAR. 12 - 6:30 P.M. Ray Shaub's Auction, Kirkwood, Rt. 472, 5 miles South of Quarryville, Pa. Plus Farmers Market Fri. and Sat. 12 Noon till 9 P.M.

SAT. MAR. 12 - 10:00 A.M. Public Auction of Tractors, Trucks & Other Equipment, 3rd Annual Farm Machinery Consignment Sale. To be held at the Elms Near Auction Barn, Vincentown, NJ, Exit 7 New Jersey Turnpike, South of 206 to Vincentown. Richard Allen, Auctioneer

SAT. MAR. 12 - 12:30 P.M. Farm Auction of 68 Holsteins, Horses & Ponies, & Full Line of Farm Equipment. Located right on Rt. 47 at Dundoff, Pa. take either Exit No. 62 at Tompkinsville, or Exit 63 at Lennoxville, off Rt. I-81. Arrows. Lackawanna Co. Fred Cobb, owner. Jim Adriance, Auctioneer

SAT. MARCH 13, 10:00 AM - First Annual Consignment Sale of Farm Machinery. Located on Route 313 southeast of Quakertown, turn onto Ridge Road for 1

mile. Watch for sale signs. Conditions by Keller Bros., James W. Mohr, Auctioneer.

SUN. MARCH 13, 1:00 P.M. - Public sale of farm machinery. This is a consignment sale. From Route 11 at Inwood, West Virginia turn east on Route 51, travel 3 miles to Haines' Market, turn right .2 of a mile to sale - OR from Charlestown, West Virginia take Route 51 west to Haines' Market, turn left .2 of a mile to sale. Edgar A. Bohrer, Sale manager.

THURS. FRI. & SAT. APRIL 14, 15, 16 - 9:30 A.M. Antique car collection and Musical related items for Gene Zimmerman, Harrisburg, Pa. J. Omar Landis Auction Service, Auctioneers.

MON. MAR. 14 - Mark Bushong, located 1 mile east of Columbia, Pa., along Route Old 30, across from

Musser's Dairy, H. Abe Shaffner and C. H. Wolgemuth, Auctioneers.

MON. MARCH 14 - 10 A.M. Annual Farm Equipment Auction by M. M. Weaver & Sons, North Groffdale Road, Leola, Penna. To consign equipment call 717-656-2321

TUES. MAR. 15 - Public Sale of Farm Equipment. Located ¼ mile West of Womelsdorf, Marion Twp., Berks Co. Raymond G. Wise, owner. Bixler & Kramer, Auctioneers

TUES. MARCH 15, 12 Noon - Public sale of 54 head of holstein cows. On the farm located on Fry Road 2-½ miles south of Jefferson in Frederick County, Maryland. Take Lander Road exit off Route 340 and follow sale signs. Mr. & Mrs. Malcolm Loy, owners. A. Doty Remsburg, Sale Manager and Auctioneer.

TUES. MARCH 15, 1977, 11:00 AM - Public sale of farm equipment. Located in West Grove, from old Route 1 turn south on Guernsey Road (at Sloan Ford), then at mushroom house turn right, continue on one mile, Chester County, Pennsylvania. Medords, Inc. Carl Diller, J. Everett Kreider, Auctioneers.

TUES. MARCH 15, 1977, 10:00 AM - Public sale of dairy herd and farm implements for Noah S. Garman. Located along Bridgeville Road, ½ mile off Route 23 just southeast of Goodville in Lancaster County, Pa. Leroy S. Horst & Paul W. Horst, Auctioneers.

TUES. MARCH 15 - 1 P.M. Special Graded Feeder Pig Sale at the Lancaster Stockyards, Inc., Lancaster, Penna.

TUES. MARCH 15, 10:00 AM. Public sale of farm equipment. Located ¼ mile west of Womelsdorf along old Route 422 in Marion Township, Berks County, Pa. Conditions by Raymond G. Wise. Paul E. Bixler and Gerald G. Kramer, Auctioneers.

WED. MAR. 16 - 11 A.M. Public Sale of Farm Equipment and Household along Colebrook Road, 1 mile South of Lancaster Junction. Sale by Howard S. Stauffer; J. Omar Landis Auction Service, Auctioneers.

WED. MAR. 16 - 9:30 A.M. Consignment Sale to be held at David H. Good's, ½ mile North of Route 23 on North Maple Ave. in Leola, Lancaster Co., Pa. Watch for sale signs. Auctioneers - F. Snyder, R. Martin, C.

Wolgemuth, J. Fry & L. Horst.

WED. MARCH 16 - 11:30 A.M. Public Auction of Full line of large Farm Equipment located 3 miles South of Lebanon along Rt. 897. Also to be sold at the same located 175 Acres of Land located in Lawn, Pa. Land will be sold at 2:00 P.M. Sale by Harvey N. and Esther H. Zimmerman; John E. and Paul E. Martin, Auctioneers.

THURSDAY, MARCH 17, 11:00 A.M. Spring Promise Sale and 309th Garden Spot Sale. Sale held at the Guernsey Sale Barn located on Route 30, six miles east of Lancaster, Pa. Earl L. Groff, Local Rep. R. Austin Backus, Inc., Sale Managers and Auctioneers.

THURS. MAR. 17 - 10:30 A.M. Whitney-Hollow Farms Complete Dispersal located 6 miles West of Mansfield, Pa., Tioga Co.; 6 miles East of Wellsboro, Pa. (auction signs from Y Drive-in Theatre). Sale by Richard L. & Louise A. Myers, owners. D.O. Rockwell and Associates, Sale Managers, Troy, Pa.

THURSDAY, MARCH 17, 1977, 10:00 AM. Located in Centre Co., about ¼ mile west of Potters Mills, Pa. along Route 322. A full line of

PUBLIC AUCTION

From Route 11 at Inwood, West Virginia turn East on Route 51. Travel 3 miles to Haines' Market, turn Right .2 of a mile to sale or from Charlestown, W. Va., take Route 51 West to Haines' Market, turn Left .2 of a mile to sale.

SUNDAY, MARCH 13, 1977

At 1:00 P.M.

Minn. Moline 302 U propane, Super 88 Oliver Diesel with a New Idea 305 mounted picker, Woods Cadet 84 rotary cutter, side draft disc, 2 drag discs, elevator with gasoline engine, pulverizer, drill, Farmhand wheel rake, corn planter, 3 bottom plows, 2 bottom plows, 2 row cultivators, scraper blades, Shaver post driver, International corn snapper, International baler, International mower, Kilbross 8 ton wagon with 350 grain bin, flat wagon with corn sides, dump wagon, wagon lift, asphalt roller with gasoline engine.

ALL OF THE ABOVE IS OUR EARLY CONSIGNMENTS. We will also be offering approximately 10 to 15 tractors—Cubs, Fords, Massey Fergusons, Internationals and other makes, plows, discs, cultivators, rotary cutters, post hole diggers, elevators, rakes and many other farm related articles.

Note: FARMERS AND DEALERS. This is a consignment sale. Let us sell your surplus farm equipment for you.

Terms: Cash. Nothing removed until settled for.

EDGAR A. BOHRER

Sale Manager
304-229-8354

Not Responsible For Accidents on Premises.
Lunch Rights Reserved.

SALE EVERY TUESDAY

Graded Sale
1st Tuesday each month
2 P.M.
Horse Auction
2nd Saturday each month
1 P.M.

FAUQUIER LIVESTOCK EXCHANGE

Marshall, Va.
703-364-4861

ANNUAL CONSIGNMENT SALE

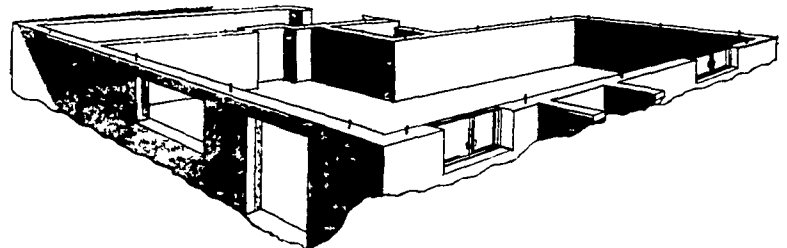
SATURDAY, MARCH 26, 1977

Bring your machinery to our sale, 20 miles North of Easton or 10 miles West of Strasburg at the Route 209 and 115 Intersections.

DICK AND DAN SEIDOF

Auctioneers
717-992-4611

START WITH THE BEST! POURED CONCRETE WALLS



- +SILAGE PIT WALLS
- +SCALE PIT WALLS
- +MANURE PIT WALLS
- +CISTERN WALLS
- +FOUNDATION WALLS
- +BARN YARD WALLS
- +RETAINING WALLS
- +CURBS
- +SLABS

CONCRETE WALLS ARE BETTER BECAUSE:

- +STRONGER ... Than Block
- +Fewer Cracks
- +Reinforced Steel
- +SOLID ... Dense all the way through
- +More Water Tight
- +Lower Maintenance
- +SMOOTHER ... Architectural finish
- +Easily Roller Painted
- +FLEXIBLE ... Made to your Design
- +SERVICE ... Complete, Experienced and Professional

Our concrete walls are formed with some of the finest aluminum forms in the business. As a result, we can offer a good solid wall at a LOW PRICE.

If You're Thinking of Building in the Spring - Call us Now!

Balmer Bros.
Concrete Work

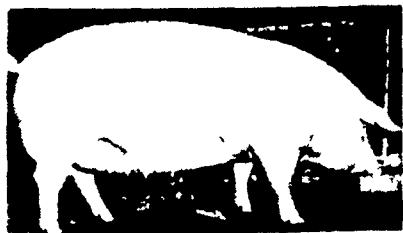
410 MAIN STREET
AKRON, PA 17501
PHONE (717) 859-3325

PENNSYLVANIA LANDRACE ASSOCIATION STATE SHOW AND SALE

SATURDAY, MARCH 12, 1977

Show 10:00 A.M. Sale 1:00 P.M.

Location: Lebanon Area Fair Grounds, Intersection of Cornwall and Evergreen Rds., Lebanon, PA



Landrace, the Great White Breed

60 HEAD 60

BRED GILTS - OPEN GILTS - BOARS

LANDRACE TRADE MARKS

The original lean meat breed.
The world's best mothers.
More capacity to produce.
An asset to any herd.

Lunch available-by Lebanon County 4-H Livestock Club
FOR CATALOGS WRITE TO:

LARRY G. BAUM

Secretary Penna Landrace Assoc
R3 Box 609
Elizabethtown, PA 17022
717-367-2882

OR

JAY D. BLATT/PRESIDENT

R2 Annville, PA 17003
PH. 717 865 4842