

Public Sales Register

Stracks Dam, Myerstown, Pa., Jackson Twp. Leb. Co. Sale by David S. King. Auct. - Earl S. Buffenmeyer

TUES. MARCH 8, 1977, 10:30 AM. Located in Centre Co., turn south off Route 45 in Millheim, Pa. onto Long Lane Road, 1 mile to farm. Public sale of farm

machinery. Sale by Reuben M. Workman, Millheim, Pa. Mark Glick, Auctioneer.

TUES. MARCH 8 - 11 A.M. Consignment Sale of Tractors and Planting and Harvesting Equipment by Stoltzfus Farm Service, Cochranville, Pa. Lloyd H. Kreider and Stephen Petersheim, Auctioneers. All consignment must be in by Feb. 10 for Advertising. Call 215-593-5280

WED. MARCH 9 - Public Sale of Farm Equipment by Moses M. Weaver, located North of Ephrata, RD 1, Stevens, Pa. John E. and Paul E. Martin Auctioneers.

THURS. MARCH 10, 1977, 12 Noon - Public sale of farm

machinery. Located 13 miles north of Middleburg, Snyder County, midway between Penns Creek and Troxelville. Sale signs along Route 104 at Penns Creek. Mr. & Mrs. Richard E. Moyer, owners. Long Bros., Auctioneers.

THURS. MARCH 10 - FRI. MARCH 11 - Horst's Two Day Machinery Sale at Marion, Pa.

THURS. MARCH 10 and FRI. MARCH 11, 10:00 A.M. - Two-day public sale of farm equipment. Located six miles south of Chambersburg, Pa., one mile east of Marion exit for Route 81 along Rte. 914. Ralph W. Horst, Sale Manager; Anderson, Rentzel, Upperman Wolgemuth, Martin, Auctioneers.

THURS. MARCH 10, 1977, 9:30 AM. Located in Mifflin Co., 1/2 mile west of Belleville, Pa. turn north off Route 655 at the Locust Grove Church, 3rd farm. Public sale of livestock, machinery, some furniture. Sale by Rudy J. & Rebecca Byler. Mark Glick, Auctioneer.

THURS. FRI. & SAT. MARCH 10, 11, 12- 9:30 Mill Bridge Craft Village and Covered Bridge Museum fine collection of Antiques including covered Conestoga Wagons, Stiegel Glass, spinning wheels, corner cupboard, steam engines and threshing machines. Real Estate consisting of 29 acres will be sold at 2:00 P.M. Catalogs on request. J. Omar Landis Auction Service, Auctioneers.

THURS. MARCH 10, 12:30 P.M. Public sale of 32 high producing dairy cows, dairy equipment, second cutting alfalfa hay, mixed hay. Located 2 miles southwest of New Berlin in Snyder County. Turn west off blacktop between New Berlin and Royers Farm Supply-watch for sale sign. Robert K. and Rachel D. Kline, owners. Earl Eash, Auctioneer.

THURS. MARCH 10-10 A.M. Public Sale of Farm Machinery and Livestock in Clinton County, between Salona and Rote. Watch for Sale signs. Sale by Mr. & Mrs. Charles Shirk, Jr., owners; Carpers, Auctioneers.

THURS. MARCH 10 - 9:30 AM. - Public sale of farm machinery, livestock, trucks, etc. Located 1 mile north of Wilmington, Delaware on corner of Route 202 and Rockland Road. Watch for full ad next week. Owner: Ruthford B. Gooden. Harold S. Hill and Son, Auctioneers. 215-274-8525.

THURS. MAR. 10 - 5:30 P.M. Public Auction at the Hat & Gavel Auction Co. located one mile North of Lititz along Rt. 501. Wilbur H. Hosler, Auctioneer.

THURS. MARCH 10 - Registered Holstein Dispersal located along Rte. 10 near Cochranville, Chester County. Sale by Paul Eby. Carl Diller, Pedigrees, Zook and Umble, Auctioneers.

THURS. MARCH 10, 11:00 AM. - Public auction of farm equipment. Held on the grounds of Caroline Sale Barn, Route 404, 1 mile west of Denton. Sterling E. Blacksten and George L. Gibney, Auctioneers.

FRI. MAR. 11 - 11:00 A.M. New Holland Sales Stables Special Draft Horse & Mules Sale to be held at the New

Holland Sales Stables, New Holland, Pa.

FRI. MARCH 11 - 12 P.M. Stocker and Feeder Sale at the Lancaster Stockyards, Lancaster, Pa.

FRI. MARCH 11 - Public sale of farm machinery, dairy equipment, household goods and antiques. Located on Pa. Route 17, 2-1/2 miles east of Blain, Perry County, Pa. Dale C. and Edna J. Rice, Owners. Art Kling, auctioneer.

FRI. MARCH 11, 10:30 AM. Public auction - 2 day complete dispersal dairy cattle and farm machinery Sale. Located on Troyer Road, 1/2 mile west of Black Horse at the intersection of Md. Rte. 23 (Norrisville Road), 8 miles southeast of Maryland Line via Exit 36 of U. S. Rte. 83 (Baltimore-

Harrisburg Expressway) and Md. Route 439-15 miles northwest of Bel Air via Jarrettsville in the Northwestern section of Harford County, Maryland. Mt. Pleasant Vu Farm, Ruth A. Smith, owner. J. H. O'Neill, Auctioneer.

FRI. MARCH 11, 10:00 AM. Public farm sale, modern farm machinery. To be held at the Brouse farm located 1 mile south of Milton along Route 405 or old Route 147, Northumberland County, Pa. James D. Brouse, Owner. Eash and Hess Auctioneers.

FRI. MAR. 11 - 5:30 P.M. Public Sale at Gap Auction located off Route 41, Lancaster Ave. opposite Turkey Hill Minit Market, Cross RR bridge. Antiques sold at every auction. Ira Stoltzfus and Son, Auctioneers.

GORDONVILLE FIRE CO. & AMBULANCE ASS'N.

9th ANNUAL SPRING SALE

SATURDAY, MARCH 12, 1977

Sale starts at 9:00 A.M.

Location: 10 miles East of Lancaster, 1/2 mile North of Paradise Bank off Route 30, 1 mile South off Route 340 along Old Leacock Road.

40 HEAD HORSES AND MULES

STARTING 1:30 P.M.

Young horses and mules, some matched teams and singles. 1 or 2 truck loads of southern stock. Llama. Several close springing heifers.

NEW AND USED FARM MACHINERY

STARTING 9:30 A.M.

NH Super 68 baler with engine. IH engine 25 hp. Case Roto bar hay rake. 290 JD corn planter. No. 9 Mc silage cutter (very good). New Potato plow. Heavy duty 2 to 1 gear box (new). Heavy duty PTO shaft (new). Papec 4 knife silage cutter 16 (new). Mc 7' mower, engine, hydraulic. Mc cultivator. Mechanical transplanter (like new). NH crimper. Tomato baskets. Truck load of farm machinery from N.Y. state. New Idea 12A manure spreader. New bulk bins.

NEW AND USED HARDWARE

Brand new 200 amp. Lincoln welder. Heavy duty 2 cyl. Wisconsin engine (excellent condition). Wester mortar mixer with electric motor. New craftsman motor for 10" saw. Several truck loads of new & used tools.

BUILDING SUPPLIES

Lumber - 2x4, 2x6, 2x8, 2x10. Trusses. Temlock. Nails. Paint. Shingles. Several truckloads of building materials.

NEW AND USED HOUSEHOLD GOODS

FURNITURE STARTING AT 10:30 A.M.

2 door Servell LP gas refrigerator (good working condition). 3-1 door Servell LP gas refrigerator (good working condition). Box spring and mattress. Dresser with mirrors. Many more new and used household items.

ANTIQUES AND COLLECTABLES

STARTING 1:30 P.M.

Dutch cupboard. Rope bed. Plank bottom chairs. Granny rocker. Kerosene lamps. Drop leaf table. Bed blankets. Old chime clock. Milk cans. Many more antiques. 2 qt. milk pail aluminum. 5 qt. tin cream pail. Small tin scoop. Small egg basket. Round cheese mold. Small vegetable scale. Wood bowl and stirrer. Iron bullet molds. Crocks. Cookie cutters. 1825 Lancaster deed parchment paper.

FRESH CITRUS FRUIT

FISH-OYSTERS (BY GALLONS)

2 Truck loads of groceries (by case lot or cans).

35 HANDMADE QUILTS

STARTING 1:30 P.M.

CORN-HAY-STRAW-

STARTING 12:00 P.M.

DRY GOODS BY COUSIN

MANY OTHER ITEMS TOO NUMEROUS TO LIST.

Goods sold on commission.

Terms by: GORDONVILLE SALES COMMITTEE.

No pets or poultry equipment.

Auctioneers: IRA STOLTZFUS and other local auctioneers.

For sales and consignment information please contact the following:

DICK - 768-3111

JAKE - 768-8971

HENRY - 687-6739

RALPH - 687-7373

Food by Ladies Auxiliary

1500 Subs - Home made cakes and pies.

Food all day of sale.

Not responsible for accidents on day of sale.

PUBLIC AUCTION

SATURDAY, MARCH 12, 1977

At 10:30 A.M.

BUTTONWOOD FARM

Hollow Road, Birchrunville, 12 miles East of Exit 22 on Pennsylvania Turnpike. 3 miles East of Route 100 and Route 23, 3 miles West of Phoenixville, Chester County, Pa.

COMPLETE DISPERSAL OF FARM MACHINERY AND DAIRY EQUIPMENT

JOHN DEERE MODEL 3020 DIESEL TRACTOR
INTERNATIONAL MODEL 1574D DIESEL TRACTOR

INTERNATIONAL MODEL 300 TRACTOR

NH baler and thrower, IH three bottom plow, JD four bottom plow, two elevators with extra sections. Three moving machines, two NH manure spreaders, one JD manure spreader. Two manure loaders, JD power washer, John Bean weed sprayer (self-propelled), three silage unloaders, NH forage harvester (corn and grass head), Cunningham hay conditioner, NH silage blower with 130 ft. pipe, two flat wagons, two forage wagons, JD grain drill, IH generator, Windpower generator, JD rake Cyclone seeder, two JD discs, JD two-row corn planter, Drag chain harrow, cultmulcher, Alpha weed sprayer (pull type), two Weaverline silage carts and chargers, steel wagon box, cement mixer, post-hole digger, snowplow, chainsaw, Lincoln welder, IH scraper blade, two irrigation pumps, Aluminum and plastic pipe. This is top line machinery, used only on BUTTONWOOD FARM.

Two 1,000-gallon (Sunset) bulk milk cooling tanks. One Esco 650-gallon cooling bulk tank, (two vacuum pumps, two glass milk pipelines both Sta-Right), portable vacuum pump (DeLaval), twelve Sta-Right milking machines, two DeLaval milking machines, 205 rubber cow mats, stainless buckets, bulk feed bin, ten hay racks, three hundred cow trainers, feed carts and hay dollies, twenty-five stanchions, Starline and Jamesway gutter cleaners, sawdust cart, three stainless wash tubs.

DAIRY COW SHOW EQUIPMENT

Power mower, gang mower, roller, three lime spreaders, sicklebar mower, two wheel steel wagon, cement posts, and forms, two desks, two file cabinets, large lot of carpenter and farm machinery tools.

This will be the outstanding farm sale this spring, everything well maintained. Farming discontinued. Luncheon served. Watch for Auction Signs.

Sale by order of,
DR. ROBERT SNELLING

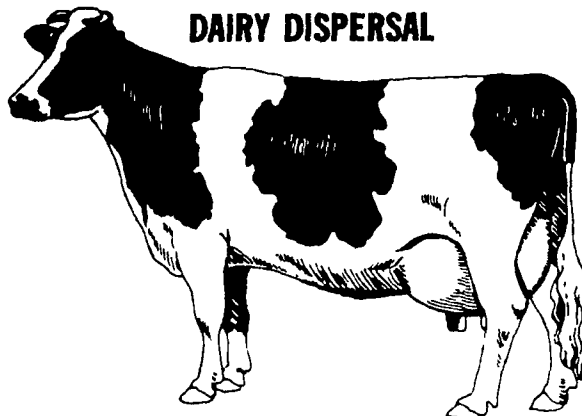
Chester Raught, Farm Manager
R. W. Rhoades—Auctioneer
(215) 933-5743

PUBLIC AUCTION

THURSDAY, MARCH 10, 1977

Starting Time 12:30 P.M.

REGISTERED AND HI GRADE
DAIRY DISPERSAL



To be held at the Robert K. Kline Farm located 2 miles Southwest of New Berlin in Snyder Co. (turn West off blacktop between New Berlin and Royers Farm Supply - watch for sale sign).

32 HIGH PRODUCING DAIRY ANIMALS

Here is a dairy herd with a lot of real potential. Most of this herd is the offspring of 5 Registered Cows, sired by Gent, Transmitter, Merry King crossed by other Popular Sire Power bulls which have produced big, vigorous animals with the dairy characteristics all dairy men are looking for. Approximately 15 will be fresh within 60 days of sale date, others freshened in December and January. Included in this herd are 3 Guernseys, 2 Ayrshire and all others Holsteins. Butterfat ranges 3.7 to 3.8 percent. T.B. and Bangs Health Charts will be provided.

DAIRY EQUIPMENT

DeLaval Magnetic Milker with No. 73 Vacuum Pump; 2 DeLaval Magnetic Milker Units; 6 Can Front Door milk Cooler; 25 Milk Cans; 2 Can Racks; Bucket Rack; 2 Stainless Steel Milk Pails; Strainer; Stainless Steel Wash Vats; 30 gal. Electric Water Heater (used 2 years); Atomist Electric Fogger.

SECOND CUTTING ALFALFA HAY

MIXED HAY

Sale Held Under Cover

Lunch

Terms: Cash

Robert K. and Rachel D. Kline
Owners
RD 1, Winfield, Pa.

EARL EASH, Auctioneer
New Berlin, Pa
717-966-2569