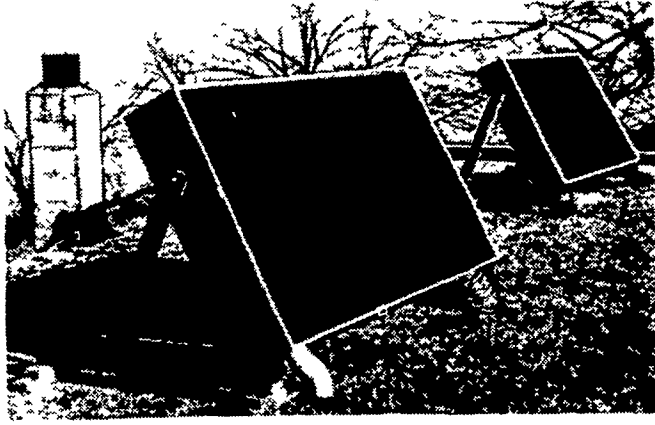


# What's New . . .



## SOLAR HEAT COLLECTOR

Designer Daniel I. Hadley, updating and improving a 40-year-old Federal design for solar energy, has come up with plans for a simplified, low-cost, do-it-yourself solar heat collector that is capable of heating a room approximately 15 feet square. Through test models - some operating continuously for as long as seven years - Hadley said he has "proved

conclusively" that his hot air or hot water solar heat collector will heat a well-insulated room 15 feet square when the sun is shining. He stressed the factor of well-insulated rooms. Hadley added that the unit can be attached to existing heating systems for supplemental supply, or coupled together to warm larger areas.

Hadley said that the plans and specifications are so simplified that almost any handyman - or woman - can build the basic unit from standard materials obtainable at neighborhood

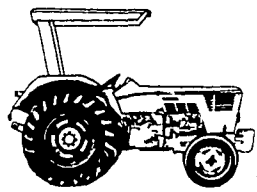
suppliers at a cost of about \$150 to \$200. It can be put together in basement or garage over a week-end, he said.

Hadley is the first to point out the idea is neither new nor patentable. He simple utilized the basic principles of a Department of Agriculture design of 1936, and, through years of testing and implementation, and the use of modern, more durable and efficient materials, evolved a system which "nearly anyone with hammer, drill, saw, and soldering equipment can build"

The hot air collector is a four by-eight-foot panel of thin plastic mounted on a wooden box lined with insulating board and containing a piece of galvanized sheet metal, an ordinary clothes dryer hose and a small fan to carry hot air into the house. The hot water unit utilizes a coil of copper pipe and a small pump. The coils alone hold 10 gallons of hot water - about enough for a shower, shave and shampoo, according to Hadley, who now heads Hadley Solar Energy Co., Wilmington, Del.

no radiator  
no water pump  
no water hoses  
no anti-freeze

**Deutz** AIR-COOLED  
(SAY DOYTZI)  
DIESEL-POWERED TRACTORS



Direct air cooling eliminates major causes of costly down time. And it permits higher internal cylinder temperatures for more complete combustion - less carbon build up and smoke - more hours per gallon. We'll be glad to arrange for a demonstration.

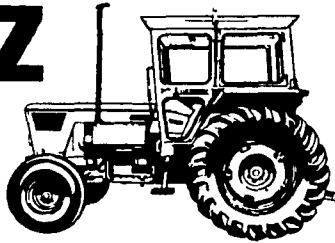
Effective Now - all  
Deutz Tractors -  
24 Month Engine Warranty



**STAUFFER DIESEL, INC.**

312 W. Main St.  
New Holland, PA  
Ph. 717-354-4181

**Deutz**  
(SAY DOYTZI)



**BIG FUEL-SAVING  
TURBO-CHARGED  
AIR-COOLED DIESEL**

**130 PTO HP STRONG**

The Deutz D 130 06 uses less fuel than any tractor in its class. And it comes with these outstanding features as standard equipment: hydrostatic power steering, hydraulic brakes, 16 forward and seven reverse gears, synchro-mesh transmission, independent pto, differential lock, heavy duty swinging draw bar, independent parking brake. Deutz safety cab and four-wheel drive available as optional equipment.



## 15 FOOT POWER HARROW

KMN Modern Farm Equipment, Inc. recently introduced the new Niemeyer TE-450 15 foot power harrow. This rugged 3-point linkage unit has a 1000 rpm gear box and PTO. Unit weighs 2750 lbs. to insure positive action of the oscillating tines in all types of soil conditions. The TE-450 is a secondary tillage tool ideal for seed bed preparation, stubble in-

corporation, pasture break-up as well as chemical and fertilizer incorporation and moisture control.

A unique feature of the TE-450 is its towing mechanism. A hydraulically controlled transport wheel is lowered into position at one end and the tractor is backed into a 2-point quick hitch at the other end. Unit is transported length-wise and can be changed from working position to transport in less than three minutes.



## SPERRY NEW HOLLAND BALER FEATURES GREATER CAPACITY

The Hayliner 315 is a new 14 x 18 medium-duty baler from Sperry New Holland, featuring increased durability and greater baling capacity.

In addition, the Model 315 is designed to produce consistent bale shape that is ideal for mechanical handling. An exclusive articulated tension rail keeps the load stable over the entire length of the bale, providing uniform density. The bale case has been lengthened, permitting bales to be kept under pressure longer, and the twine is centered eight inches apart on the bale.

Also exclusive, the flow-action feeding system has a larger and more gently curved feeder bar for smooth operation and gentle hay handling. The super-sweep pickup is six inches wider, increasing baling capacity of the Model 315.

The pickup is offset from the bale chamber and the tongue is longer, permitting operation with larger tractors.

Contributing to smooth, quiet operation are cushioned hay dogs and needle latch areas, plus Elastomer caps on the feeder bearings. The new power pivot PTO, with its pivoting pedestal, eliminates chatter in the tightest turns and increases life of the driveline.

**TRY A  
CLASSIFIED  
AD!**

# FARROWING PIGS A PROBLEM - STOP LOSSES HOUSE THEM IN A CASTLE

AVAILABLE WITH PIT OR PITLESS

**SOW CASTLE**... the new  
economical, plug-up-and-go total farrowing  
environment QUALIFIES FOR TAX INVESTMENT CREDIT



Models come 12 or 24 feet wide (24-foot model shown here), in lengths of 32 or 50 feet. All 24-foot wide buildings have an entry door in each end. See chart on back of this sheet for more specifications.



Built-in ventilation system keeps building dry and provides fresh air for animal health. Unique air flow system pulls air in at roof ridge line, circulates it over the top of the animals, through the pit, and out. Note that design of roof system eliminates the need for any massive bulkheads that could restrict air flow.

Bank Financing & Leasing Available

See Our Sow Castle on Display

**E. M. HERR EQUIPMENT, INC.** RD1, Willow Street, PA. Lancaster Co.



Farrowing stalls and nursery areas are equipped with aluminum T-slats in the floor, front and rear. Individual slats are 1" across the top and 1" high, with 3/8" spacing between slats.



Each farrowing stall has an adjustable sow feeder and automatic water cup. Nipple waterer is optional in place of water cup. Stall sides are adjustable to size of sow. Nursery feeders are provided for pigs.

Look at a few of the features we build into our structures.

Each ventilation fan is located in a separate chamber to prevent air turbulence in the pit area to the outside. Building remains virtually odor-free because odor-laden air from the pit area does not enter living area of the animals.

