

THE OLD FARMER'S ALMANAC

FEB. 21-27, 1977

Ice on the river, two feet of snow,
Thirty-mile wind and thirty below.

Pass along your old clothes to the poor Washington's Day Feb 21 (although his birthday is Feb 22) First quarter of the moon Feb 25 Mardi Gras Day Feb 22 Average length of days for the week 11 hours, 1 minute Famous Iwo Jima Marine photo taken Feb 23, 1945 Grand Canyon Park established Feb 26, 1919 Is it progress if a cannibal uses a knife and fork?



you say, "canting," was the reverse. When the wind backed, it usually meant that good weather would not last, but if it hauled especially into a westerly quarter, days of fair weather might be expected. The terms are still used.

Home Hints: To minimize the "bleeding" of a plant when it is cut back, always prune when it is semi-dormant.

OLD FARMER'S WEATHER FORECASTS

New England: Snow to start, then becoming fair through Wednesday, snow storm with 10" expected Thursday and Friday, week's end fair.

Greater New York-New Jersey: Sunny and chilly through Wednesday, then snow and rain, freezing-rain over weekend.

Middle Atlantic Coastal: Cold with flurries, then Wednesday brings 5-8" snow, clearing by Friday and cold for remainder of week.

Piedmont & Southeast Coastal: Sunny and mild to start, cold snap and snowstorm from midweek on.

(All Rights Reserved Yankee Inc. Dublin, N.H. 03444)

Baltimore USDA

February 14, 1977

CLOSE:

CATTLE 500: Slaughter steers & heifers 50-75 cents lower on high Good & Choice grades, others steady to weak, cows weak to 25 cents lower, bulls 50-1.00 lower. Supply 45 per cent slaughter steers & heifers, 45 per cent cows, balance few feeders and bulls.

SLAUGHTER STEERS: Choice 2-4 950-1300 lbs. 38.00-39.50; Good & Choice 37.25-38.00; Good 2-4 925-1200 lbs. 32.50-37.25; Standard & Good Holsteins 2-3 1095-1375 lbs. 29.60-33.60.

SLAUGHTER HEIFERS: Choice 2-4 870-1100 lbs. 34.25-36.50; few Good 2-3 800-865 lbs. 29.60-33.00.

COWS: Utility 2-3 24.35-28.25; Cutter 23.00-26.75; Canner & low Cutter 19.75-23.00.

BULLS: Yield Grade 1 1150-2155 lbs. 32.50-35.50; few 960-1110 lbs. 27.00-31.60.

FEEDER CATTLE:

several Good steer calves 340-400 lbs. 32.00-34.00

HOGS 800: Compared with Thursday Barrows & Gilts steady to 50 cents higher U S 1-3 200-230 lbs. 41.00-41.50

U S 2-3 230-250 lbs. 40.00-41.00

SOWS: Steady U S 1-3 300-400 lbs. 30.00-31.00

U S 2-3 400-600 lbs. 31.00-32.00

VEAL & CALF AUCTION

15: Choice 150-285 lb. Vealers 58.50-71.00; several Prime 73.00-75.50; Good 100-225 lbs. 46.00-58.00; Standard & low Good 75-125 lbs. 30.00-45.00; few Good calves 250-380 lbs. 28.00-32.50

SHEEP AUCTION 10:

Individual Choice wooled slaughter lambs 125 lbs. 51.50 several Good 55 lbs. 37.50

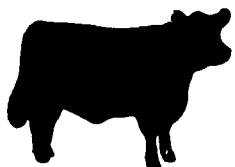
New Holland Dairy

Monday, Feb. 24

Reported receipts of 145 cows, 11 heifers. Market lower than last week's market.

Load of Pennsylvania fresh cows 450-700; load of Franklin County fresh cows 580-700; load of New York State fresh cows 700-900, springers 510-825; load of Pennsylvania fresh cows 475-

740; Holstein herd, all stages of production 290-600; Guernsey herd, all stages of production 240-400.



HAY, STRAW & CORN

—SALE—

Every Friday at 1:00 P.M.

GREEN DRAGON MARKET & AUCTION

RD No 3 Ephrata, Pa 717-733-2334
1 mile North of Ephrata on N State St



Des Moines

Feb. 16, 1977

AS OF 2:15 AND CLOSE
Compared to Tuesday's close: Fresh Pork cut trade slow, demand moderate to light with best interest for skinned hams. Fresh Loins late sales 1.0 higher, picnics not established, Boston Butts 1.75-2.00 lower, spareribs no comparison available, skinned hams 75-3.00 higher, bellies 1.50-2.50 lower.

Bellies, sds 12-14 lbs. 52.50-53.00; load 54.00 1.50-

2.00 lower; 14-16 lbs. 52.50-53.00; load 54.00 2.00-2.50 lower load 16-18 lbs. 54.75; Pork trim 50 pct lean 35.50-36.20 frozen; offal & variety: hearts 29.50; compared to Tuesday's close: Beef trade moderate to slow. Demand moderate to light. Steer beef steady to 1.00 higher. Heifer beef 50-1.00 higher. Prime Beef cuts arm chucks steady. Boning Utility cow Beef steady. Sales on 50 loads of steer and Heifer Beef confirmed 2 loads cow beef confirmed

L & M FUR & WOOLEN ENTERPRISE



Quality Electrified Moutons & Furs
Tannery Direct Dist. - Wholesale & Retail
Check our Quality, Price & Services!

- Woolen Hosp. Pads - Natural & All Colors
- Pa. Largest Selection of Woolen Products
- Sheepskin Coats at Reasonable Prices
- See Us At Meadowbrook Market in Leola

117 W. Summit St., Mahnton, Pa.
215-777-2465
Hours: Mon.-Fri. 9-8:30; Sat. 9-5

ACROSS THE LAND WEX IS WORKING



LET WEX GO TO WORK FOR YOU

Join the thousands of farmers who — on more than ten million acres — have made **WEX** an important part of their complete ag-program. Discover for yourself that — on crop after crop from germination to harvest . . . **WEX** is working.

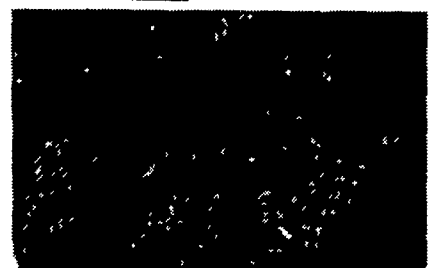
WEX THE WETTING AGENT

- makes water wetter for greater saturation and penetrating power
- assists in suspension of wettable powders
- reduces foaming of ag-chemicals
- improves compatibility of many ag-chemicals
- aids in more uniform chemical coverage

WEX THE NUTRIENT RELEASE AGENT

- contributes to superior root development
- causes more advanced crop development in the early growth stages
- encourages greater formation of secondary hair roots.
- increases real yield at harvest time

SEE THE DIFFERENCE WEX IS MAKING



WEX applied to the wheat on the right produced increased stooling, better developed roots and taller, stronger plants.

Compiled Data On WEX

The compiled data from all randomized, replicated research plots on corn reveals, with 99 percent degree of confidence, that where **WEX** was used at the rate of 16 ounces per acre, **WEX** did increase yields on those corn plots by over 5 percent.

It was much the same for root mass. The results of all our replicated research plots, using **WEX** at 16 ounces per acre we're 99 percent confident that the root mass was increased in excess of 10 percent.

For More Information On

WEX one of many QUALITY CONKLIN PRODUCTS

GOLDEN ACRES SEED CORN
SPRAY MATERIALS and INSECTICIDES

Contact

MELVIN R. WEAVER

R.D. 1 Box 529
Manheim, Pa. 17545
717- 569-6576

