

Livestock market and auction news

Pa. Auction Summary

February 4, 1977
CATTLE 6917. Compared with 7524 head last week, and 6255 head a year ago. Slaughter steers steady to 50 cents lower. Slaughter heifers unevenly steady. Slaughter cows 50 cents to \$1 lower. Slaughter bullocks steady to 50 cents lower. Slaughter bulls steady to \$1 lower.
STEERS: High Choice & Prime 40.10-42.00, Choice 36.85-41.75, Good 33.00-38.00, Standard 29.75-34.60, Utility 26.90-31.50. **HEIFERS:** Choice 33.85-38.25, Good 30.00-36.00, Standard 26.00-32.70, Utility 22.00-29.00. **COWS:** Utility & High Dressing Cutter 24.00-28.00, Cutters 22.50-27.00, Canners 20.50-24.00, Shells down to 15.00. **BULLOCKS:** Few Choice 35.50-41.25, Good 32.00-37.50, few Standard 28.75-34.75, few Utility 25.00-31.00. **BULLS:** Yield Grade No. 1 1100-2000 lbs. 30.00-36.75; few yield grade No. 2 900-1650 lbs. 27.00-34.10. **FEEDER CATTLE:** Good 350-850 lbs. feeder steers 27.50-36.75; few Good & Choice feeder heifers 18.00-30.00.

CALVES 4305. Compared with 4987 head last week, and 4594 head a year ago. Vealers unevenly steady.

VEALERS: 69.00-76.50, Choice 56.00-72.00, Good 43.50-65.00, Standard & Good 110-130 lbs. 35.00-53.00, 90-110 lbs. 30.00-43.00, Standard 70-90 lbs. 23.00-35.00, Utility 60-90 lbs. 12.00-27.00. Farm calves, holstein bulls 90-120 lbs. 35.00-50.00.

HOGS 6766. Compared with 6656 head last week, and 8452 head a year ago. Barrows & Gilts \$1 to \$2 higher, most advance at start of week.

BARROWS & GILTS: US No. 1-2 200-235 lbs. 41.10-45.60, No. 1-3 190-245 lbs. 40.10-45.00, No. 2-3 190-275 lbs. 38.00-43.00, few No. 2-4

250-300 lbs. 30.75-41.10, No. 1-3 140-180 lbs. 26.50-39.50. US No. 1-3 300-575 lbs. sows 24.50-36.75, No. 2-3 300-600 lbs. 22.00-30.50. Boars 17.00-26.00.

FEEDER PIGS 960. Compared with 1394 head last week, and 1079 head a year ago. Feeder pigs uneven. US No. 1-3 25-35 lbs. feeder pigs 6.00-20.00 per head, No. 1-3 35-50 lbs. 14.00-33.00, No. 1-3 55-100 lbs. 22.00-37.50 per head. 2231 head graded this week, and 1109 head last week. Feeder Pigs \$5 to \$10 higher per cwt. (all prices on a per cwt. basis). US No. 1-2 40-60 lbs. 61.00-72.00, No. 2-3 35-55 lbs. 45.00-67.00, Utility 25-55 lbs. 30.00-45.00.

SHEEP 329. Compared with 453 head last week, and 421 head a year ago. Woolled slaughter lambs mostly steady. Choice 70-110 lbs. woolled slaughter lambs 47.00-56.00, Good 60-110 lbs. 39.00-49.00. Slaughter ewes 11.50-19.00.

Valley Livestock

Valley Stockyards, Inc.
 Athens, Pa.
 Monday, Feb. 7

Reported receipts of 452 calves, 134 cows, 133 hogs, 33 heifers, 20 steers, five bulls, two sheep, and one goat. Cattle and calf markets steady.

Veals 50-70; bobs 25-40; grassers and feeders 20.00-28.00; lambs 30.00-43.00; sheep 10.00-16.00; hogs 20.00-40.50; pigs 10.00-25.00; heifers 24.00-31.00; steers 26.00-32.75; bulls 27.00-30.25; cows, good 26.00-28.25; cows, med 23.50-24.50; cows, poor or small 14.00-21.00; goats to 10.00.

East Coast Car lot Meats

February 9, 1977
 Compared to Tuesdays close: Beef trade continues slow with commitments on 30 loads Steer Beef as reported by the USDA. Choice Steer Beef steady to .75 higher, goods Steady. No sales Heifer Beef reported. Two loads cow beef confirmed with no comparison. Boneless beef steady to 1.00 higher. Steer hinds and chucks mostly steady. 20 loads lamb confirmed at fully steady compared to last week except 65-75 lbs. in limited trade 1.00 to 3.00 higher as lighter supplies force prices higher. Fresh Pork loins 1.00 higher, no comparison other pork cuts.

STEER BEEF
 30 Loads Confirmed
 Choice 3 600-800 lbs. 6325-6350 .75 higher
 Choice 4 600-900 lbs. 5950 steady
 Good 3 600-800 lbs. 5925 steady

COW BEEF
 2 Loads Confirmed
 Utility Boning 1-2, 600 lbs up 5000 ltd. no comparison
 Canner-Cutter 1-2 350 lbs up 5250 ltd. no comparison, 350 lbs. down 4950 ltd. no comparison

CHOICE 3 PRIMAL BEEF CUTS
 8 Loads Confirmed
 Steer Hinds 145-190 lbs. 7475-7525 generally steady,

fores 130-210 lbs. 5425 no comparison, armchucks 90-130 lbs. 5200 generally steady, steer rounds 70-90 lbs. 8100 no comparison

GOOD 3 PRIMAL BEEF CUTS
 4 Loads Confirmed
 Steer hinds 145-190 lbs. 7100 no comparison, heifer hinds 120-170 lbs. 7100 no comparison

LAMB CARCASS CHOICE AND PRIME
 3-4 10 Loads Confirmed
 Compared to late last week:

55 lbs. down 10500-10600 no comparison, 50-55 lbs. 10200-10400 fully steady, 55-65 lbs. 9200-9500 steady, 65-75 lbs. 8500-8600 ltd. 1.00-3.00 higher

FRESH PORK CUTS
 Loins 14 lbs down 8450 1.00 higher, 14-17 lb. regular 8350-5450 no comparison, 14 lbs. down, trimmed 8650 no comparison, 14-17 lbs. trimmed 8550 no comparison, spareribs 3 lbs. down 8350

CURED AND PROCESSED MEAT

11 Loads Confirmed
 Skinned Hams 16-20 lbs. 7100-7400 three loads no comparison, Franks, 70 beef, 30 pork, vacuum pack, 1 lb. pks three loads 5800 no comparison, Bologna, 70 Beef, 30 Pork, vacuum pack, 1 lb. pkg three loads 6000 no comparison, 1 lb. sliced

Peoria Auction

February 10, 1977
CATTLE: Receipts this week: 5400 Last week: 4800 Year ago: 5000

Compared with last's close, Slaughter Steers steady to 50 higher. Slaughter Heifers steady, instances 50 higher. Cows steady to 50 lower. Bulls steady. Receipts about 70 per cent Slaughter Steers, 22 per cent Slaughter Heifers, balance mainly cows. Quality of Slaughter Steers increased over last week

bacon vacuum pack two loads 9650 no comparison

BONELESS BEEF
 4 Loads Confirmed
 90 Chemical lean, fresh 7125 ltd. generally steady; 85 Chemical lean, fresh 6700-6750 steady to 1.00 higher

BEEF TRIMMINGS
 1 Load Confirmed
 50 Chemical Lean, frozen 2700 no comparison

with several loads Choice and Prime.

SLAUGHTER STEERS: At mid-week: Choice and Prime 3-4 1150-1330 lbs. 39.50-40.50, load 1315 lbs. 40.75; Choice 2-4 950-1300 lbs. 38.50-39.50 Mixed Good and Choice 2-4 900-1300 lbs. 37.00-38.50; Good 2-3 34.50-37.00; Load Good 2-3 Holsteins Monday 33.00.

SLAUGHTER HEIFERS: Choice and Prime 3-4 900-1075 lbs. Wednesday 36.50-37.00, Load 37.50-37.75; Choice 2-4 850-1100 lbs. 35.50-36.50 Mixed Good and Choice 2-4 800-1100 lbs. 34.00-35.50; Good 2-3 31.00-34.50; Standard and Good 2-3 30.00-31.50.

COWS: Utility and Commercial 2-3 23.00-25.25; few high-dressing Utility 25.50; Cutter 1-2 21.00-23.50; Canner 19.00-21.50.



TOP OF THE HOG MARKET

DANVILLE LIVESTOCK MARKET

OLD ROUTE 11
 DANVILLE, PA 17821
 717-275-2880



Market your hogs the auction way.

SALE EVERY MONDAY 2 P.M.

Melvin M. Lehman (Owner)

HAY, STRAW AND EAR CORN SALE

Every Wednesday at 12 Noon

HARVEY Z. MARTIN

North Maple Ave., Leola, PA
 Home Phone 215-445-5303
 We Buy On Orders.
 Bus. Phone Wed. Only
 717-656-7270

At David Good's Farm Equipment Sale

Leola, PA

We also buy hay and straw privately.

ATTENTION FARMERS!!

Ciba-Geigy-AAtrex

FURADAN

DYFONATE 20-G

SUTAN 6.7E

LASSO

QUALITY

CONKLIN PRODUCTS

WEX AND FUELMATE

Golden Acres Hybrid Seeds

Coker Hybrid Corn

CALL NOW FOR BEST PRICE

MELVIN R. WEAVER

RD1 Box 529

Manheim, P.A

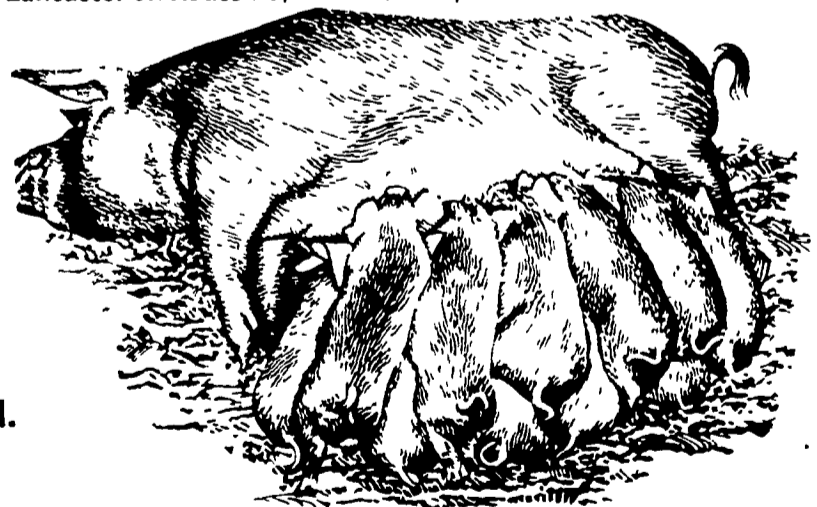
PH. 717-569-6576

NEW HOLLAND SALES STABLES INC.

12 miles east of Lancaster on Route 23, New Holland, PA.

WEEKLY FEEDER PIG SALE EVERY WEDNESDAY

Sale To Start Promptly At 1 P.M.



WE WILL RECEIVE YOUR PIGS ANYTIME FROM 7 A.M. WED. MORNING

State Graded Until 12 Noon. All pigs inspected by State Approved Veterinarian.

State tags available at our office for you to tag pigs at home to save 25¢ tagging charge.

Tags delivered if you call 717-354-4341 our office in advance.

CALF SALE TO BE HELD IN NEW SALES PAVILION EVERY THURSDAY AT 6:30 P.M.

NORMAN KOLB
 717-397-5538

ABE DIFFENBACH
 717-393-4464