

*Foot and mouth disease affected*

# USDA considers quarantine facility

NEW YORK, N.Y. - The U.S. Department of Agriculture has proposed criteria for the location, design, construction and operation of an overseas livestock quarantine facility that would screen cattle prior to shipment to USDA's new animal import center to be constructed at Fleming Key, Fla.

Officials of USDA's Animal and Plant Health Inspection (APHIS) said the quarantine facility would be located at a foreign port-of-embarkation. This would be one of the safeguards when, for the first time since 1930, cattle may be imported into the United States, via Fleming Key, from areas designated by USDA as having foot-and-mouth disease (FMD), or rinderpest, two highly contagious foreign livestock diseases.

Public comments on the proposed criteria may be submitted until March 22, 1977 to the Deputy Administrator for Veterinary Services, APHIS, U.S. Department of Agriculture, Hyattsville, MD 20782.

The overseas port-of-embarkation quarantine facility, together with the Fleming Key Animal Import Center, is part of a new high-security livestock import system that will permit valuable new breeding stock to be imported safely from selected FMD or rinderpest-infected countries - thanks to careful screening, long-term isolation and stringent veterinary testing and examination.

Criteria and standards proposed for the facility would include:

- Isolation from all domestic and wild

ruminants, swine, and poultry;

- Location close to docks, which can be reached

## Funds sought

HERSHEY, Pa. - WITF-TV-FM, the regional public broadcasting stations for south central Pennsylvania, have announced a capital campaign to be conducted throughout their ten-county service area for the replacement and upgrading of transmission facilities.

The capital campaign, the first since WITF went on the air in 1964, will be conducted throughout February and March, with a goal of \$475,000 in pledges. The remaining funds to meet the total project cost of \$950,000 will come from a matching grant from the U. S. Department of Health, Education and Welfare.

without exposure to animals or poultry enroute;

- Security against contact with other animals or potential carriers of disease through the design of fences, buildings, access control and sanitary systems;

- Provision for paving, pens, loading chutes, dipping vats, feed storage, water supply, examination facilities, laboratory space, and areas for workers to shower, change clothes and eat.

APHIS officials noted that the requirements for the overseas quarantine facilities are in many ways similar to those provided at the Fleming Key Animal Import Center, where foreign cattle will have to pass a five-month isolation period and meet rigorous veterinary health tests before entering the United States as new breeding stock.

Fleming Key is located at the tip of the Florida Keys, on an isolated portion of the Key West Naval Station. Location of the overseas quarantine station has not been designated.

## Tractor club meets

The Loganville 4-H Tractor Club held its first meeting Monday, January 31 at the Home C. Harry Miller, Glen Rock R2.

Members will be learning tractor safety and maintenance during the course, scheduled to meet for several weeks. Boys and girls, ages 8 to 19 and living in the Glen Rock-Loganville-Shrewsbury areas, are invited to join the Tractor Club.

For additional information, contact Mr. C. Harry Miller or the York County Extension Office.

Kooser, Somerset; Linn Run, Ligonier; Promised Land, Greentown; Ralph Stover, Point Pleasant; Park-er Dam and S. B. Elliot, Penfield; and Worlds End; Forksville.

"Additional information on cabin rentals, applications forms and leaflets detailing recreational facilities at all 97 State Parks can be obtained by writing to Rep. Noah W. Wenger, P. O. Box 109, House of Representatives, Main Capitol Building, Harrisburg, Pa. 17120 or the Bureau of State Parks, The Department of Environmental Resources, Box 1467, Harrisburg, Pa. 17120 or the individual park."

## Park cabins for rent

HARRISBURG - Rep. Noah W. Wenger, R-Lancaster, urges Pennsylvanians interested in reserving family cabins in the 11 state parks for the Summer season to apply before the March 15 deadline.

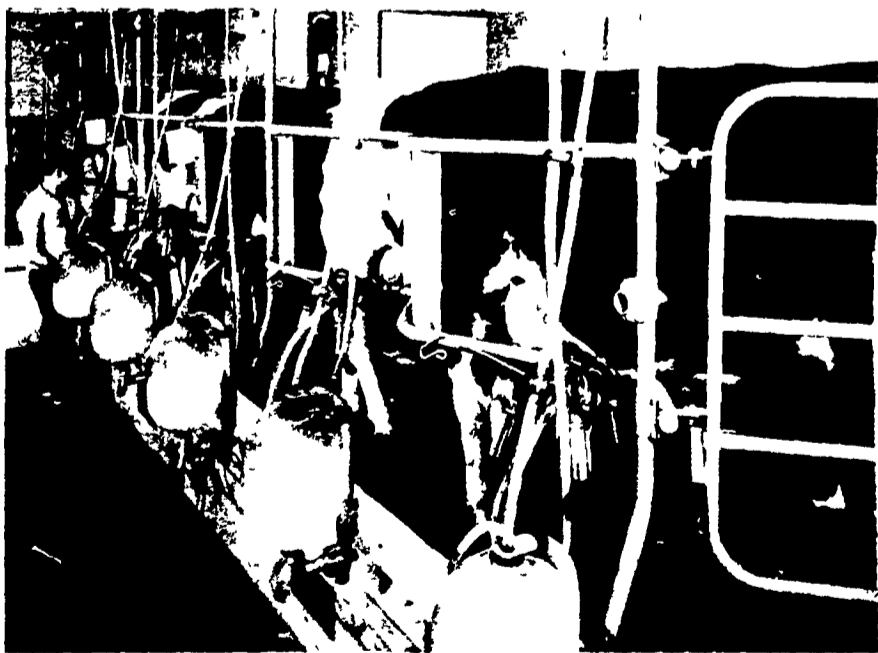
The minimum reservation period is one week running from Saturday to Saturday. However, half-rental periods are available during the Spring and Fall seasons at one-half the weekly rate.

Wenger listed state parks which have cabin facilities available this Spring as: Black Moshannon, Philippsburg; Clear Creek, Sigel; Cook Forest, Cooksburg; Cowans Gap, Fort Loudon;

WANT BETTER MILKING WITH GREATER RESULTS?

# BOU-MATIC

Bucket Units - Stainless Steel or Glass Pipelines  
ALL KINDS OF MILKING EQUIPMENT —  
IN PLACE WASHING —  
AUTOMATIC TAKE OFF — IN PLACE STIMULATING



Shown above herringbone parlor equipped with calibrated, glass weigh jars. This system is ideal for the dairyman who desires to check the production of every cow at every milking. Washes in place. The large vacuum reserve near the udder helps to stabilize vacuum at teat.

- DARI-KOOL — BULK TANKS
  - BOU-MATIC PIPELINES & MILKING PARLORS
  - AUTOMATIC CAROUSELS & POLYGONS
- SALES — SERVICE — INSTALLATION

## CARL L. SHIRK

COLEBROOK ROAD RD5, LEBANON, PA PHONE 717-274-1436

**FRESH COWS**      **EVERY WEDNESDAY IS**      **SPRINGERS**

# DAIRY DAY

**AT NEW HOLLAND SALES STABLES, INC.**  
New Holland, PA

If you need 1 cow or a truck load, we have from 100 to 200 cows to sell every week at your price. Mostly fresh and close springing Holsteins. Cows from local farmers and our regular shippers including Marvin Eshleman, Glenn Fite, Gordon Fritz, Blaine Hoffer, Dale Hostetter, H D Matz, and Jerry Miller.

**SALE STARTS 12:30 SHARP**  
Also Every Wednesday, Hay, Straw & Ear Corn Sale 12:00 Noon.

**All Dairy Cows & Heifers must be eligible for Pennsylvania Health Charts.**

For arrangements for special sales or herd dispersals at our barn or on your farm, contact  
**Abram Diffenbach, Mgr.**  
717-354-4341  
OR  
**Norman Kolb**  
717-397-5538

**HEIFERS**

**STOCK BULLS**

# WANTED

## Thrifty farmers to cash in on John Deere's preseason Roundup of Haymaking Bargains

Want to talk price about a hay or forage machine? We're ready with the special discounts listed below. You can cash in two ways during this limited-time Round-Up of Bargains. Get the John Deere equipment you want PLUS the instant cash discount. No waiting for a rebate to arrive. And no waiting for a good deal. We're ready now with these pre-season discounts.



MACHINES	DISCOUNT UNTIL 28 FEB 1977	DISCOUNT 1 MAR 1977-30 APR 1977
336 and 346 Balers	\$195	\$90
15A and 16A Choppers		
100 Stack Mover 25 and 34 Forage Harvesters		
1207 1209 and 1214 Mower/Conditioners	\$390	\$195
800 and 830 Windrowers		
466 Baler		
35 and 3800 Forage Harvesters		
100 Stack Wagon	\$520	\$260
200 and 300 Stack Movers	\$650	\$325
Hydrostatic Windrowers	\$1 040	\$520
200 and 300 Stack Wagons		
Self-Propelled Forage Harvesters	\$1 950	\$975
230 Stack Shredder/Feeder	\$2 600	\$2 600

No finance charges imposed until the next use season. Ask us for details. If dealer inventory of any product listed above is exhausted, it can be ordered.



**Shotzberger's Equipment**

Elm, PA  
717-665 2141

**Wenger Implement Inc.**

Quarryville, PA  
[At The Buck]  
717-284-4141

**Pikeville Equipment Inc.**

Oyster Dale Road  
Oley RD2, PA  
215-987-6277

**I. G.'s Ag Sales**

Silverdale, PA 18962  
215-257-5136

**Geo. V. Seiple & Son**

Easton, PA  
215-258-7146

**Edwards & Cox**

Oxford, PA  
215-932-2929