

# Livestock market and auction news

## Joliet Cattle

February 2, 1977

**CATTLE:** Friday through Wednesday's salable receipts 6,269, 5 days last week 8,288, last year 8,765. Slaughter Steers and Heifers firm compared to Wednesday of last week. Supply mostly Choice Steers and Heifers.

**SLAUGHTER STEERS:** High Choice and Prime 3-4 1150-1325 lbs. 39.50-40.00, Load 40.25 Monday. Choice 2-4 1000-1350 lbs. mostly 38.50-39.50. Mixed Good and Choice 2-3 900-1250 lbs. 37.00-38.50, load Good Holsteins 2 1300 lbs. 32.00 Monday.

**SLAUGHTER HEIFERS:** Choice, Few Prime, 2-4 850-1150 lbs. 36.00-37.50, Mostly 36.50-37.50 Monday, Mostly 36.50-37.25 Wednesday. Mixed Good and Choice 2-3 750-1000 lbs. 35.00-36.00.

February 2, 1977

**CATTLE:** 3,200 Trading



moderate. Slaughter Steers and Heifers opening weak. Supply about 20 per cent Heifers. Steers mostly Choice 2-4 1000-1350 lbs. Heifers mostly Choice 2-4 900-1150 lbs.

**SLAUGHTER STEERS:** High Choice and Prime 3-4 1150-1325 lbs. 39.50-40.00. Choice 2-4 1000-1350 lbs. 38.50-39.50. Mixed Good and Choice 2-3 900-1250 lbs. 37.00-38.50.

**SLAUGHTER HEIFERS:** Choice, Few Prime, 2-4 875-1150 lbs. 36.00-37.25, Mostly 36.50-37.25, Package 37.50. Mixed Good and Choice 2-3 750-1000 lbs. 35.00-36.00.

## Peoria Auction

February 3, 1977

51 Weekly summary

**CATTLE:** Receipts this week: 4800 Last week: 6900 Year ago: 5200

Compared with last week's close, Slaughter Steers 50-75, instances 1.00 higher. Slaughter Heifers 50-1.00 higher. Cows steady to 50 higher. Bulls fully steady. Receipts about 70 per cent Slaughter Steers 23 per cent Slaughter Heifers, balance largely cows.

**SLAUGHTER STEERS:** Choice and Prime 3-4 1150-1300 lbs. 39.00-40.00; Choice 2-4 950-1275 lbs. 38.50-40.00, mostly 38.50-39.50; Mixed Good and Choice 2-4 900-1300 lbs. 36.50-38.50; Good 2-3 33.50-36.50; Load and Part-load Good 2-3 Holsteins 33 50-34.00; Few Standard and Good 2-3 33.00.

**SLAUGHTER HEIFERS:** Choice and Prime 3-4 900-1110 lbs. 36.50-37.25; Near three loads 37.50; Choice 2-4 850-1050 lbs. 35.50-36.50, Few loads 37.00; Mixed Good and Choice 2-4 800-1100 lbs. 34.00-35.50; Good 2-3 31.00-34.00; Standard and Good 2-3 30.00-31.50.

**COWS:** Utility and Commercial 2-3 23.00-25.00; High-dressing Utility 25.50-26.00; Cutter 1-2 21.00-23.50; Canner 19.00-21.50.

**BULLS:** Yield Grade 1-2 1100-1800 lbs. 29.00-33.50; Few Yield Grade 1 34.00-35.00.



## Omaha Cattle

February 3, 1977

Compared with the previous week's close: closing prices on Slaughter Steers were 50-100 higher and Heifers closed 50-75 higher. Cows were mostly 1.00 higher, Bulls weak to 1.00 lower.

Four day receipts 12,300 compared 15,300 previous week and 17,200 a year ago. Weather was a dominant factor in the cattle trade as severe storm conditions and blocked roads over the eastern portion of the country virtually paralyzed movement of the finished product the fore part of week. Marketings were substantially reduced during the period, and late supplies were not sufficient to reflect the improved demand as travel conditions returned to more nearly normal conditions. Despite the transportation difficulties, the rate of slaughter under federal inspection showed little change. The Steer and Heifer supply locally was only moderately attractive with a large share Good to Average-Choice most days. Steers made up approximately 40 and Heifers

## Valley

### Livestock

Athens, Pa.

**Monday, January 31, 1977**  
Reported receipts of 490 calves, 156 cows, 46 heifers, 25 bulls, 25 steers, 53 hogs, five goats. Cattle market steady with last week's market. Calf market also steady with no horses.

Veals 25.00 - 42.00; bobs 50.00 - 68.00; grassers and feeders 16.00 - 30.00; lambs 30.00 - 40.00; sheep 8.00 - 16.00; hogs 18.00 - 41.00; pigs 8.00 - 20.00; heifers 24.00 - 29.75; steers 20.00 - 27.50; bulls 24.00 - 33.00; cows, good 25.00 - 27.50; cows, med. 22.50 - 23.50; cows, poor or small 18.00 - 21.00; ponies 8.00 - 10.00; goats 10.00 - 30.00

### Cheetahs Unique

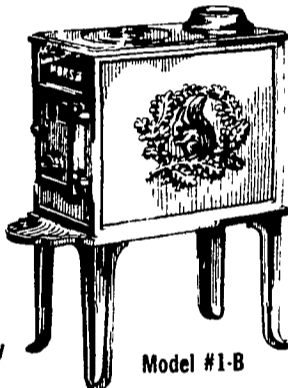
Unlike lions, monkeys and many other animals, cheetahs don't live in family groups. Males leave the females after mating, and mother cheetahs raise their cubs alone.

### Timber Available

The United States has nearly two trillion board feet of standing softwood timber — enough to supply wood for many years, according to the U.S. Department of Agriculture.

## MORSØ - THE WOOD STOVE THAT PAYS FOR ITSELF

- \* Air tight design
- \* Baffle system
- \* Long burning
- \* 70-75% efficiency
- \* 240 pounds cast iron
- \* Enamel finish
- \* Inner cast liners
- \* Large feed door
- \* Burns 22 8" log
- \* 5,186 cu in.
- \* Holds fire overnight
- \* 6,000 cu. ft. heating capacity



Model #1-B

We have many to choose from including Ashley type wood stoves, wood and coal combination stoves and ranges.

Build your own chimney with insulated stainless steel chimney pipe - we have it in stock

This winter is an exceptionally good winter to burn wood and save on fuel bills

Send for literature - Delivery available

**LUKE G. SENSENIG**

R. D. #1 Glenwood Drive  
Ephrata, Pa. 17522  
Phone 717-733-0703

Located 1-1/2 miles Northeast of the Green Dragon Farmer's Market

Due to impressive fuel economy, Jøtul is an investment that can pay for itself over the first winter.

ANOTHER ULTIMATE FROM *Jøtul*

**NO. 507 COAL BURNER**  
Also burns coke, wood, or peat. Design assures complete combustion of hot gases, giving exceptional heating capacity on very little fuel.



- Many Models to Choose From
- Exceptionally Long Burning Time
- Practical and efficient
- Lasts a lifetime
- Simple draft and temp. control

Showroom at

**STILLWATER POND**

Off Rt. 501 between  
Brickerville and Schaefferstown  
Ph. 717-949-3002



## L & M FUR & WOOLEN ENTERPRISE



Quality Electrified Moutons & Furs

Tannery Direct Dist. - Wholesale & Retail

Check our Quality, Price & Services!

- Woolen Hosp Pads - Natural & All Colors
- Pa. Largest Selection of Woolen Products
- Sheepskin Coats at Reasonable Prices
- See Us At Meadowbrook Market in Leola

117 W. Summit St., Mohnton, Pa.  
215-777-2465

Hours: Mon.-Fri. 9-8:30; Sat. 9-5

Saved over  
24 pounds  
of feed  
per hog.



Producer Rufus Coody challenged Tylan® on his place. Hogs fed Tylan saved an average of 18 82 pounds of feed per hundred pounds of gain. That's over 24 pounds of feed saved per hog. Let us bring the feed savings home to your place.

Ask us for...

**Tylan**  
HOGS

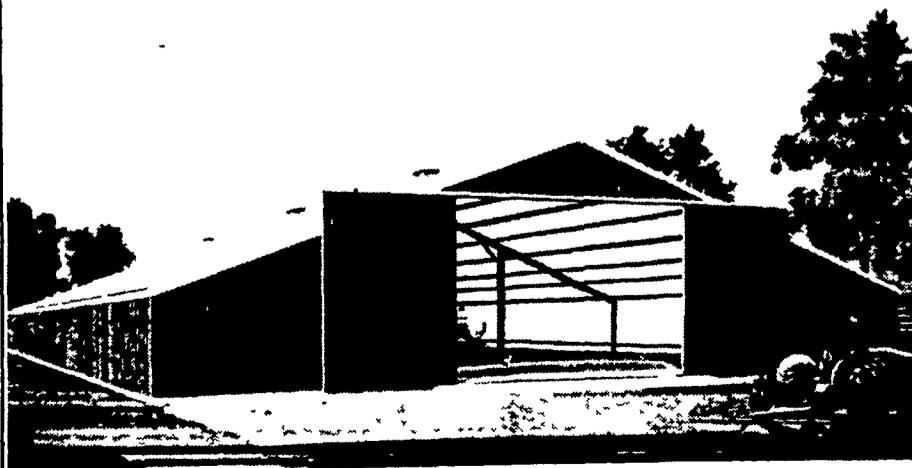
The Feed Saver.

Proven on farms like yours.

FOR MORE INFORMATION SEE YOUR  
FEED SUPPLIER SERVICED BY  
NEW HOLLAND SUPPLY CO.

## QUONSET®

# POL-BARN™



All new STEEL "pole barn"  
— economical, strong,  
versatile, attractive.

**VERNON E. MYER**

Steel Buildings  
And Grain Storage  
R.D. 4, Lebanon, PA 17042

Phone: (717) 867-4139

Financing Or Leasing Available

Quonset Pol-Barn (with 18" wing units)