

# Hog Markets

## Lancaster Market

HOGS: Barrows and gilts 1.50-2.25 higher.  
**BARROWS AND GILTS:**  
 US 1 200-240 lb. 44.50-45.00,  
 US 1-2 200-240 lb. 43.75-44.00,  
 US 2-3 239-255 lb. 43.00-43.75

## St. Louis

Thursday, Feb. 3, 1977  
 HOGS: 5500  
 Barrows & gilts active, 50-75 higher.  
 US 1-2 200-240 lb. 40.75-41.00. US 1-3 200-250 lb. 40.50-40.75.

## Lancaster Auction

Wednesday, Feb. 2, 1977  
 HOGS: Barrows and gilts 75-1.50 lower.  
**BARROWS AND GILTS:**  
 US 1 200-235 lb. 43.50-43.75.  
 US 1-2 200-240 lb. 42.50-43.25.  
 US 2-3 200-260 lb. 41.50-42.50.

## Vintage

Thurs., Feb. 3, 1977  
 No. 2's 40-60 lb. 41 to 49 cents, 60-96 lb. 40 to 45 cents; No. 3's 27-40 to 50 cents, 50-70 41 to 49 cents; some 108 lb. 34.50 per hundred.

## Peoria Auction

Thursday, Feb. 3, 1977  
 HOGS: 3500 - Receipts currently 600 under estimate.  
 Barrows & gilts opening fully 50 higher. Trading active.  
 US 1-2 200-230 lb. 40.50-41.00. US 1-3 200-240 lb. 40.00-40.50.

## Indianapolis

Thursday, Feb. 3, 1977  
 HOGS: 2500  
 Barrows & gilts very active, steady to weak.  
 US 1-2 200-230 lb. 40.25-40.50, near 150 head 40.50. US 1-3 200-240 lb. 39.75-40.25. Uneven lots 39.50-39.75. 1 lot US 2-3 near 270 lb. 38.00. 1 lot US 3-4 near 340 lb. 35.00.

## New Holland

Monday, Jan. 31  
 HOGS: 1854 head  
 RETAIL: 45.00-46.25;  
 heavyweight 42.00-43.00;  
 lightweight 40.00-43.00;  
 wholesale 43.00-44.85  
 SOWS: 28.00-36.00  
 BOARS: 20.00-32.00  
 SHOATS: 510 head  
 No. 1 and 2's 43-48 lbs. 64.00-64.50; 50-60 lbs. 61.00-64.00; No. 2 26-40 lbs. 59.00-74.00; 43-50 lbs. 61.00-66.50; No. 2 and 3's 31-43 lbs. 45.00-67.00, 47-53 lbs. 59.00-64.50; No. 3 30-56 lbs. 45.00-57.00; Utility 22-33 lbs. 42.00-45.00, 36-53 lbs. 36.00-43.50.

## Lancaster Feeder Pigs

Tuesday, Feb. 1, 1977  
 Feeder Pigs  
 Today 822  
 Two weeks ago 1417  
 TREND: Compared to two weeks ago feeder pigs 12.00-16.00 higher, although Utility steady. All prices on a per hundred weight basis.  
 US 1-2 35-50 lb. 63.00-72.00, 45 head 45 lb. 75.00-76.50, 50-60 lb. 60.00-70.00, 60-70 lb. 52.50-63.00, 26 head 63 lb. Gilts 88.00, Few 70-75 lb. 40.00-43.50  
 US 2-3 34-40 lb. 58.00-62.00, 15 Head 33 lb. 74.00, 40-50 lb. 54.00-61.00, 40 Head 50-60 lb. 41.00-43.00  
 Utility 85 Head 35-65 lb. 30.00-39.50



## Lancaster Feeder Cattle

Friday, Jan. 28, 1977  
 Feeder Cattle  
 Today 311  
 Last Friday 337  
 TREND: Feeder steers steady to strong; supply included couple lots Choice 690-819 lb.; about 50 head 875-1200 lb. Holsteins, balance mainly clean up trade sold in lots of three or less.  
**FEEDER STEERS:** One lot Choice 810 lb. 37.35, one lot 690 lb. 35.85; mixed Good and 550-920 lb. 33.75-34.75; 50 head mostly Good 875-1200 lb. Holsteins 27.25-28.00.

## Lancaster Grain Prices

Friday, Feb. 4  
 These prices are made up of the average pieces quoted by a number of participating area feed and grain concerns. It should be noted, however, that not every dealer or broker handles each commodity. All prices are per bushel except ear corn and soybean meal which are per ton.

The average prices quoted Friday, Feb. 4 are as follows:

	Bid+	Offered+
Ear Corn	58.25	69.00
Shelled Corn	2.59	2.75
Barley	2.41	2.65
Oats		
Local	1.67	1.87
Western	2.25	2.41
Wheat		
Millers	2.71	2.86
Soybeans	7.20	
Soybeans Meal		264.00

# Futures Trading

(Closing Bids as of Thursday, Feb. 3)

	Chicago Cattle	Chicago Hogs	New York Maine Potatoes	New York Fresh Eggs
January				62.60
February	37.85	39.25		61.90
March			7.23	53.75
April	38.85	35.95	8.21	50.00
May			9.48	49.40
June	41.20	37.90		
July		38.25		
Aug.	42.00	36.40		
Sept.				
October	42.25	36.60		
Dec.	43.10	35.57		

Trend—Cattle are lower, Hogs are mixed, Potatoes are higher, and Eggs are higher.

Market Provided by Commodity Department Reynolds Securities, Inc.

# CHICAGO GRAIN FUTURES

(Closing bids as of Thursday, Feb. 3)

	Wheat	Corn	Soybeans	Soybean Meal
March	2.76	2.53	7.31	208.30
May	2.83	2.58½	7.35	209.40
July	2.89½	2.63½	7.36	209.20
Aug.			7.30½	208.50
Sept.	2.96¼	2.67	7.08	201.00
Oct.				192.50
Nov.			6.91¼	
Dec.	3.06¼	2.71		192.00

Trend—Corn is higher, Wheat is higher, Soybeans are higher and Soybean Meal is higher.

Markets Provided by Commodity Department Reynolds Securities, Inc.

# U.S. Inspected Livestock Slaughter

Estimated Daily Livestock Slaughter Under Federal Inspection

	CATTLE	HOGS	SHEEP
Week to Date	585,000	1,077,000	99,000
Same Period Last Week	590,000	1,021,000	101,000
Same Period Last Year	587,000	944,000	100,000

Know Where the Activities Will Be? Read the Farm Women Calendar.

# J. M. HOOBER INC.

As you know there are no easy ways to farm and to raise livestock. You work hard with your hands & back & you try to use all the knowledge your parents taught you, then you trust in the Lord.

Our business has no short cuts or easy ways either. We just work hard to supply you with quality feeder cattle & stand ready to assist you when your livestock is ready for market.

**NEXT FEEDER PIG SALE**  
**FEBRUARY 15, 1977**

Please Call Us Soon  
 PH (717) 397-6191, 569-2084, 626-5659

## HAY, STRAW & CORN

-SALE-

Every Friday at 1:00 P.M.

## GREEN DRAGON MARKET & AUCTION

RD No. 3 Ephrata, Pa. 717-733-2334  
 1 mile North of Ephrata on N. State St.



National Reputation - Local Service

### CONTACT:

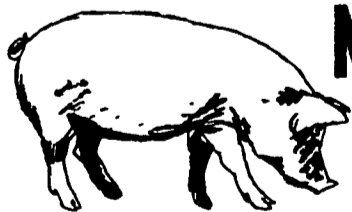
**JOHN CAMPBELL**  
 Atglen, PA  
 (215) 593-5529  
**GARY McGEE**  
 Spring Run, PA  
 (717) 349-2340  
**DAN DERR**  
 Conowingo, MD.  
 (301) 378-3280

have a nice weekend...



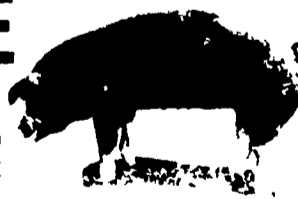
# ATTENTION CATTLE FEEDERS

Do you want to make buying your stockers and feeders easy. It can be very simple. Just call and give us your order. All orders filled to your exact specifications. Call us anytime. We can be very helpful.



## NEXT FEEDER PIG SALE

### TUESDAY, FEB. 15 - 1 P.M.



Consign all your feeder pigs to Walter M. Dunlap & Sons where they will be handled by a capable and experienced staff.

Feeder pigs received from 6 A.M. to 11 A.M.

# WALTER M. DUNLAP & SONS

## LANCASTER STOCK YARDS

Consignors can get state tags at our office, thereby saving 25c marketing expense

For Further Information, Call 717-397-5136