

READ LANCASTER FARMING FOR FULL MARKET REPORTS

YORKSHIRES

Do you need a boar that will produce fast growing pigs, low feed conversion, but yet will give you plenty of lean red meat?

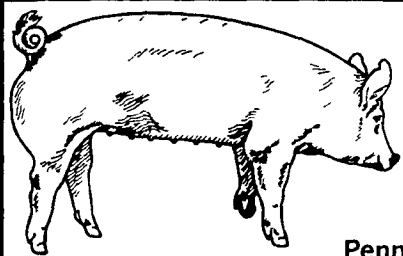
Try a YORKSHIRE BOAR from our herd. The herd with the big winners. The last two years we have had the superior boar over all breeds at the New York State Fair.

We also have bred Gilts and Open Gilts both for the purebred and commercial breeder. Delivery available.

Call or Write:

REAL FARMS INC.

Tipton, Pa. 16684
Phone 814-684-4769 or 814-684-3720



YORKSHIRE WINTER SHOW & SALE

Sponsored by Penna. Yorkshire Coop. Assoc. Inc.

To be held at the Lebanon Area Fairgrounds, 1 1/2 miles South of Lebanon, Intersection Cornwall and Evergreen Roads.

SATURDAY, FEB. 5, 1977

Show - 10:00 A.M.
Judge - Gene Sweigart
Sale - 1:00 P.M.

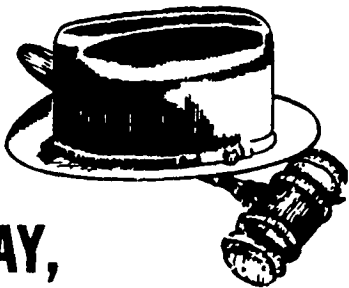
20 Yorkshire Bred Gilts
10 Yorkshire Boars
Approx. 30 Yorkshire Open Gilts

Auctioneer:
ABE DIFFENBACH
For Catalogs

Write or Call **LEON L. ARNOLD, SEC.-TREAS.**
RD1, Box 54, Lebanon, PA 17042
717-273-5880

HAT & GAVEL AUCTION CO.

1 Mile North of Lititz on Route 501



SATURDAY, FEBRUARY 12, 1977 10:00 A.M.

ANTIQUe SALE

Refinished Oak ice box, Grandfather's rocker, wash stand, Pedestal table, robe bed, cane chairs, pine pierced tin pie safe, dough tray, spinning wheel, Chautauqua roller organ with cobs, baskets, copper lustre, Shirley Temple creamer, carnival, brass bracket light, two blown water sets with 6 tumblers, shaft bells, water bowls and pitcher sets, pressed glass, R.S. German serving dish, bed side kerosene lights, elk head ink well, early Snow White and Seven Dwarfs, Swiss music box (plays cob 13" long, 6 1/2" wide, 5" high), six carved arched back needle point chairs (needle points need work), Empire chest of drawers, small Jewel pot belly stove, blanket chest, fiddle back chairs, robe leg ball and claw organ stool.

This is only a partial listing, lots more being consigned. Watch for more listings in next weeks advertisement.

WE SPECIALIZE IN PUBLIC AUCTIONS, ESTATES AND ANTIQUES.

WILBUR H. HOSLER

306 Owl Hill Road, Lititz

Harold K. Galebach, Partner

HAT & GAVEL AUCTION CO. SELLS ON COMMISSION—CALL 626-0254

Receiving Hours: Monday, Noon to 9 P.M.; Wednesday, 9 A.M. to 5 P.M.; Tuesday, Pickup Day.

Public Sales Register

Located 6 miles southeast of Strasburg along Route 896 in the village of Georgetown, Lancaster County, PA. Terms by Bart Twp. Fire Co.

MON. MAR. 7 - Earl Retherford, location: R.D.1, Bainbridge, Pa., full line of farm equipment. H. Abe Shaffner and C. H. Wolgemuth, Auctioneers.

TUES. MARCH 8 - 11 A.M. Consignment Sale of Tractors and Planting and

Harvesting Equipment by Stoltzfus Farm Service, Cochranville, Pa. Lloyd H. Kreider and Stephen Petersheim, Auctioneers. All consignment must be in by Feb. 10 for Advertising. Call 215-593-5280

WED. MARCH 9 - Public Sale of Farm Equipment by Moses M. Weaver, located North of Ephrata, RD 1, Stevens, Pa. John E. and Paul E. Martin Auctioneers.

THURS. FRI. & SAT. MARCH 10, 11, 12- 9:30 Mill Bridge Craft Village and Covered Bridge Museum fine collection of Antiques including covered Conestoga Wagons, Stiegel Glass, spinning wheels, corner cupboard, steam engines and threshing machines. Real Estate consisting of 29 acres will be sold at 2:00 P.M. Catalogs on request. J. Omar Landis Auction Service, Auctioneers.

THURS. MARCH 10 - Registered Holstein Dispersal located along Rte. 10 near Cochranville, Chester County. Sale by Paul Eby. Carl Diller, Pedigrees, Zook and Umble, Auctioneers.

FRI. MARCH 11 - 9:30 A.M. Public Sale of Farm Machinery and some Household Goods for J. Nathan Long located in Clinton County, 3 1/2 miles South of Mill Hall, Pa. Mark Glick, Auctioneer.

FRI. MARCH 11 - 10 A.M. Consignment Machinery Sale to be held at Keister's Middleburg Auction Sales, Inc., Rt. 522, 3 miles East of Middleburg, 5 miles West of Selinsgrove, Pa. Art Kling and Larry Long, Auctioneers.

FRI. MAR. 11 - 11:00 A.M. New Holland Sales Stables Special Draft Horse & Mules Sale to be held at the New Holland Sales Stables, New Holland, Pa.

3rd ANNUAL PENN NATIONAL RED & WHITE SALE
MONDAY, MARCH 28, 1977
12:30 P.M.

Guernsey Sales Pavilion, Rt. 30, 6 miles East of Lancaster.

WE ARE STILL LOOKING FOR SOME TOP CONSIGNMENTS IF YOU HAVE OR KNOW OF ANY PLEASE WRITE OR CALL COLLECT

Kenneth D. Myer, President, Box 531, RD3, Elizabethtown, Pa. 17022 or Call 717-367-3344

Sale Sponsored By The **Red & White Dairy Cattle Association.**

CONSIGNMENT SALE
WEDNESDAY, FEBRUARY 2, 1977
at 9:30 A.M.

Location: 1/2 mile North of Route 23 on North Maple Ave. in Leola, Lancaster Co., Pa. Watch for sale sign.

Tractors, Farm Machinery, Horse Drawn Implements, New Tools & Hardware. Positively no Household Goods. Truck load Citrus fruit direct from Florida, Fish, Oysters, Shrimp. We sell on Commission.

Hay & Straw Sale Every Wednesday at 12:00 Noon by Harvey Z. Martin

Sale by **DAVID H. GOOD**
717-656-8911

Auctioneers - F. Snyder, R. Martin, C. Wolgemuth, J. Fry, L. Horst.

NOT RESPONSIBLE FOR ACCIDENTS.
Next sale Wednesday, February 16, 1977

GORDONVILLE FIRE CO. AND AMBULANCE ASSOCIATION
9th ANNUAL

SPRING SALE

SAT., MARCH 12, 1977
SALE STARTS AT 9:00 A.M.

LOCATION
10 miles East of Lancaster, 1/2 mile North of Paradise Bank off Route 30, 1 mile South off Route 340 along Old Leacock Road.

Mules and Horses; New & Used Farm Machinery, Tools & Hardware, Household Goods; Fresh Citrus Fruit; Building Supplies; Antiques & Collectables; Corn, Hay, & Straw and Quilts & Dry Goods.

For sales and consignment information please contact the following:

JAKE - 768-8971 RICHARD - 768-3111
RALPH - 687-7373 HENRY - 687-6739

Goods sold on commission:

Terms By **GORDONVILLE FIRE COMPANY**

Auctioneers:
IRA STOLTZFUS and other local auctioneers
FOOD BY LADIES AUXILIARY
All consignments for listing on final Sale Bill should be made by FEBRUARY 18, 1977.

90 A FARM AT

PUBLIC AUCTION

SAT. MARCH 5,

1:00 P.M.

Located 3 mi. North of McAlisterville, Juniata Co., PA.

8 room brick dwelling, bank barn, concrete stave silo, excellent farm ground.

SHOW DATES - February 19 & 26, 9:00 AM to 4:00 PM FOR BROCHURE, contact aucts. Machinery & household goods, 10:00 AM

RUTH W. ELSASSER - Owner
Ph. 717-463-2674

Long Bros. Aucts.
RD No. 2
Port Royal, PA 17082
Ph. 717-527-4458
Or 717-527-4784

HAT & GAVEL AUCTION CO.

1 Mile North of Lititz on Route 501



THURSDAY EVENING, FEBRUARY 3, 1977 5:30 p.m.

BEAUTIFUL MODERN SOLID FURNITURE, HOUSEHOLD, COINS

Selling from Mary Beckley Estate of Elizabethtown. Also another partial Estate.

Bremen piano and stool, like new; 6 leg cherry long drop leaf table, 4 modern Windsor type chairs, dropleaf coffee table and matching end tables, cherry 2 pc. hutch, early dough tray, knee hole desk, 3 pc. bedroom suite, small cedar chest, fold out sofa bed, solid state mahogany stereo, 2 pc. living room suite, portable B & W T.V., love seat, round mahogany and step end tables, portable sewing machine, double bed. Coins will be sold at 8:00 P.M.

We are now receiving Goods For our Antique sale on Saturday, February 12, 1977.

We Specialize In Public Auctions, Estates and Antiques

WILBUR H. HOSLER

306 Owl Hill Rd., Lititz

Harold K. Galebach, Partner

HAT & GAVEL AUCTION CO. SELLS ON COMMISSION—CALL 626-0254

Receiving Hours: Monday, Noon to 9 P.M.; Wednesday, 9 A.M. to 5 P.M.; Tuesday, Pickup Day.

Positively No More Garage Sale Leftovers Will Be Received.