

Livestock market and auction news

Peoria Auction

January 27, 1977
CATTLE: receipts this week: 6800 Last Week: 5500 Year Ago: 5200.

Compared with last week's close, slaughter Steers steady to 50 higher Slaughter Heifers mostly steady. Cows 2.00-2.50 lower. Bulls mostly steady. Receipts about 70 percent Slaughter Steers, 20 percent Slaughter Heifers, balance mostly Cows. Steer supply continues to run mainly average-good to average-choice.

SLAUGHTER STEERS: Choice and Prime 3-4 1150-1300 lbs. 38.00-39.50, load 1300 lbs. 40.25, late 38.00-38.75, couple loads 39.00; load Yield Grade 4-5 1315 lbs. 36.50; couple loads 1500-1700 lbs. 34.00-35.00; Choice 2-4 950-1300 lbs. 37.50-39.25, at mid-week 37.50-38.50, load and part-load 39.50; Mixed Good and Choice 2-4 900-1300 lbs. 36.00-37.50 Good 2-3 33.00-36.00; Monday load Good 2-3 Holsteins 34.00; few Standard and Good 2-3 Holsteins 32.50; Standard and Good 2-3; late 31.50-33.00.

SLAUGHTER HEIFERS: Choice and Prime 3-4 900-1050 lbs. closing 36.00-37.00, mostly 36.00-36.50; early part-load 37.25 and few 38.00;

Choice 2-4 850-1075 lbs. closing 35.00-36.00; Mixed Good and Choice 2-4 800-1100 lbs. 33.50-35.00; Good 2-3 30.50-33.50; Standard and Good 2-3 29.50-30.50.

COWS: Utility and Commercial 2-3 23.00-24.50; High-Dressing Utility 25.00, early up to 26.00; Cutter 1-2 21.00-23.00; Canner 19.00-21.50.

BULLS: Yield Grade 1-2 1100-2100 lbs. 29.00-33.50; few Yield Grade 1 34.00-35.00.

Carlisle

January 25, 1977

CATTLE 249. Compared with last Tuesday's market, slaughter steers uneven. Slaughter cows steady to 25c lower, spots \$1 lower. Good slaughter steers 35.00-37.35, Standard 31.25-32.75, Utility 26.00-28.25. One Good slaughter heifer at 35.00, one Standard at 32.25, Utility 24.00-27.50. Utility & High Dressing Cutter slaughter cows 26.60-27.85, Cutters 23.60-26.25, Canners 20.60-23.60, Shells down to 19.00.

Yield Grade No. 1 slaughter bulls 31.25-36.00; yield grade No. 2 27.00-28.85.

CALVES 202. Vealers mostly \$1 to \$3 lower. Choice

Chambersburg

January 20, 1977

CATTLE 460. Compared with last Thursday's market, slaughter steers grading Standard & Good steady to 50 cents higher. Slaughter cows steady to \$1 higher, with spots \$1.50 higher on Canner. Few Choice slaughter steers 38.00-40.35, Good 34.75-37.85, Standard 32.00-35.50, Utility 27.25-31.00. Good slaughter heifers 32.25-35.00, Standard 30.00-32.50, Utility 27.75-31.25. Utility & High Dressing Cutter slaughter

vealers 60.00-69.00, Good 46.00-55.00, Standard & Good 110-130 lbs. 38.00-47.00, 90-110 lbs. 32.00-38.00, Standard 70-90 lbs. 30.00-34.50.

HOGS 263. Barrows & Gilts mostly \$2 lower. Few US No. 1-2 200-230 lbs. barrows & gilts 39.00-40.00, No. 1-3 200-240 lbs. 37.75-39.00, No. 2-3 190-260 lbs. 33.25-36.00, No. 2-4 260-300 lbs. 27.60-29.75. US No. 1-3 300-450 lbs. sows 31.00-34.00, No. 2-3 300-600 lbs. 23.50-29.50. Boars 19.00-19.50.

FEEDER PIGS 130. US No. 1-3 20-30 lbs. feeder pigs 12.00-13.50 per head, No. 1-3 30-40 lbs. 16.00-19.50, No. 1-3 40-55 lbs. 21.00-26.00 per head.

cows 27.85-30.85, Cutters 26.00-28.50, Canners 25.00-27.25, few Shells down to 24.00. Few Good slaughter bullocks 35.75-36.50, few Standard 33.00-34.25. Yield Grade No. 1 1300-2100 lbs. slaughter bulls 32.35-37.50. Choice 350-600 lbs. feeder steers 30.00-36.50. Choice 300-500 lbs. feeder heifers 25.00-31.00.

CALVES 565. Vealers grading Choice \$1 to \$5 lower, Standard & Good 70-110 lbs. \$1 to \$5 higher. Few Prime vealers 74.00-78.00, Choice 64.00-71.00, Good 50.00-65.00, Standard & Good 110-130 lbs. 42.00-56.00, 90-110 lbs. 39.00-42.00, Standard 70-85 lbs. 32.00-39.00, Utility 50-65 lbs. 25.00-34.00. Farm calves, holstein bulls 95-115 lbs. 39.50-49.50.

HOGS 115. Barrows & Gilts 25 cents to \$1.25 higher. US No. 1-2 210-245 lbs. barrows & gilts 40.60-41.60, No. 1-3 200-250 lbs. 39.85-40.50. US No. 1-3 400-700 lbs. sows 28.00-34.75. Few Boars 14.50-19.00.

FEEDER PIGS 75. US No. 1-3 25-40 lbs. feeder pigs 12.00-16.00 per head, No. 1-3 100-130 lbs. 28.50-32.75 cwt.

SHEEP 12. Few Choice 65-90 lbs. woolled slaughter lambs 49.00-51.50, lot 150 lbs. at 44.00.

Middleburg

Middleburg, Pa.

January 25, 1977

CATTLE 278. Compared with last Tuesday's market, slaughter steers grading Standard & Good 25 cents to \$1.25 lower. Slaughter cows 50 cents to \$2 lower. Few Choice 1000-1200 lbs. No. 2-4 slaughter steers 37.50-39.75, Good 34.75-37.75, Standard 31.75-34.00, few Utility 28.50-30.00. Choice slaughter heifers 33.00-37.25, one at 38.50, Good 30.50-33.50, Standard 28.50-31.25, few Utility 27.00-29.00. Utility & High Dressing Cutter slaughter cows 25.25-28.25, couple to 30.50, Cutters 24.00-25.75, Canners 23.00-24.50. Few Good slaughter bullocks 34.50-35.00, few Standard 30.50-34.00. Yield Grade No. 1 950-1750 lbs. slaughter bulls 31.50-34.50. Few Medium 300-700 lbs. feeder heifers 28.50-31.75; one lot Good 400-450 lbs. feeder bulls 30.25.

CALVES 236. Vealers grading Good & Choice \$3 to \$10 lower. Few Prime vealer 69.00-76.00, Choice 59.00-69.00, Good 45.00-57.00, Standard & Good 110-130 lbs. 38.00-45.00, 90-110 lbs. 35.50-38.50, Standard 70-85 lbs. 25.00-34.00. Farm calves, few Holstein bulls 100-115 lbs. 36.50-42.50.

HOGS 594. (Monday, January 24, 1977). Barrows & Gilts \$1.25 to \$1.50 lower. US No. 1-2 200-230 lbs. barrows & gilts 41.70-43.00, No. 1-3 190-240 lbs. 41.00-41.80, No. 2-3 180-250 lbs. 38.25-41.10. US No. 1-3 300-625 lbs. sows 32.00-38.50.

FEEDER PIGS 106. US No. 1-3 20-35 lbs. feeder pigs 13.00-27.00 per head No. 1-3 35-55 lbs. 25.00-36.50 per head.

SHEEP 17. Few mixed Good & Low Choice 50-115 lbs. woolled slaughter lambs 43.50-48.00. Few Slaughter ewes 12.50-16.50.

New Holland Horse

New Holland, Pa.

Monday, January 25

Reported receipts of 442 horses, mules and ponies. Market steady with last week's market.

Local driving horses 180-665; riding horses 175-275; better horses 300-550; lightweight killers 22-26; heavyweight killers 30-32; mares 25-55; colts 10-25; geldings 25-50; larger ponies 55-110.

Locally consigned work horses 1275-1500, pairs; 450-650, singles.

Paul Waltermeyer Sale

New Holland Sales

Stables

Friday, Jan. 21

424 head horses and mules;

Working horses: Tennessee pairs 1425-2550, singles 625.00-1200.00, Michigan pairs 1950-2800, Iowa pairs 1825-3025, singles 475-900

Mules: Tennessee pairs 2150-3350, singles 825-1075, Penna. driving horses singles 320-725

Local consigned: mules - pairs 1875-3000, singles 400-1475; work horses, pairs 1600-2550, singles 575-1025; mares in foal 750-1050; studs 675-1550, local driving horses 375-1025.

Dewart Auction

Dewart, Pa.

January 24, 1977

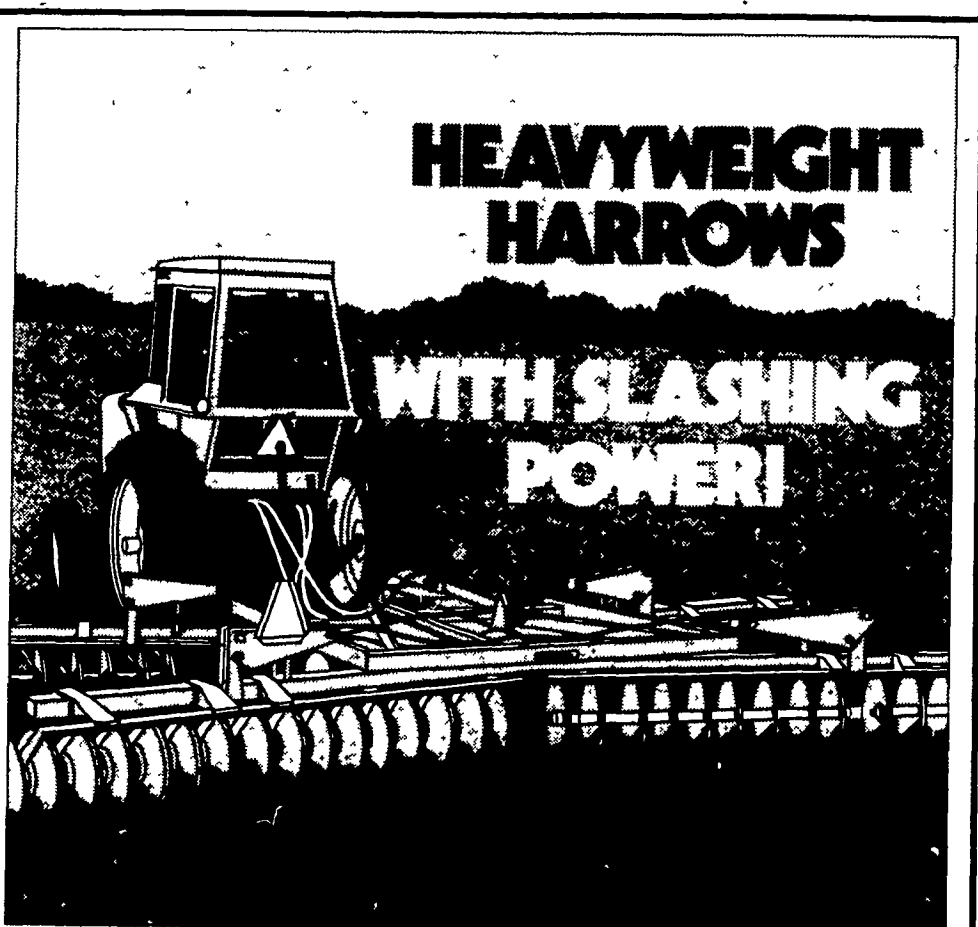
CATTLE 266. Compared with last Monday's market, slaughter steers grading Standard & Good about steady. Slaughter cows steady to 50 cents higher. Choice 1100-1350 lbs. yield grade No. 2-4 slaughter steers 38.25-39.85, Good 34.50-38.00, Standard 31.75-34.00. Couple slaughter heifers 35.10 and 35.50, few Good 31.00-33.50, few Utility & Standard 28.85-30.85. Utility & High Dressing Cutter slaughter cows 27.00-29.60, one at 30.00, Cutters 25.25-27.50, Canners 23.60-25.25. One Good slaughter bullock at 37.50. Few yield grade No. 1 1300-1980 lbs. slaughter bulls 32.00-34.75. Few mixed Good & Choice 300-450 lbs. feeder heifers 30.00-31.00.

CALVES 231. Vealers grading Good & Choice \$3 to \$10 lower, Standard & Good 70-110 lbs. steady to \$4 higher. Few Prime vealers 65.00-75.00, Choice 57.00-65.00, Good 45.00-55.00, Standard & Good 110-130 lbs. 39.00-45.00, 90-110 lbs. 36.00-39.50, Standard 70-85 lbs. 32.00-35.00. Farm calves, holstein bulls 90-115 lbs. 38.00-44.00.

HOGS 475. Barrows & Gilts \$2 to \$3 lower. US No. 1-2 200-235 lbs. barrows & gilts 41.00-41.60, lot 42.50, No. 1-3 200-235 lbs. 39.90-41.00, No. 2-3 200-260 lbs. 38.70-40.50. US No. 1-3 300-550 lbs. sows 29.00-32.00, No. 2-3 350-700 lbs. 28.00-30.50.

FEEDER PIGS 226. US No. 1-3 20-35 lbs. feeder pigs 15.00-22.00 per head, No. 1-3 40-70 lbs. 24.00-32.00, lot No. 1-3 100 lbs. 34.00 per head.

SHEEP 15. Choice 85-100 lbs. woolled slaughter lambs 49.00-54.00.



HEAVYWEIGHT HARROWS

WITH SLASHING POWER!

Come see how tough Allis-Chalmers disc harrows cut and slice deeply into your soil to prepare a proper seedbed Extra weight—75 pounds per blade in the 2300 make the penetrating difference Or choose the 3000 with 140-pound blades that are more than a match for heavier soils

Let us show you how shock-absorbing, spring-steel bearings give

years of protection against rust freeze-ups, and maintain alignment

Wide choice of blade sizes with back-up plates that provide extra strength where it's needed Stop in for full details now

The Rising Power in Farming
ALLIS-CHALMERS

No Interest On Tractors or Implements bought with tractors until March 1, 1977.

C. J. Wonsidler Bros.
 RD1, Quakertown, PA 18951
 Phone 215-536-1935
 215-536-7523

Roy H. Buch, Inc.
 Ephrata, RD2
 717-859-2441

BHM Farm Equipment, Inc.
 Annville, RD1, PA
 717-867-2211

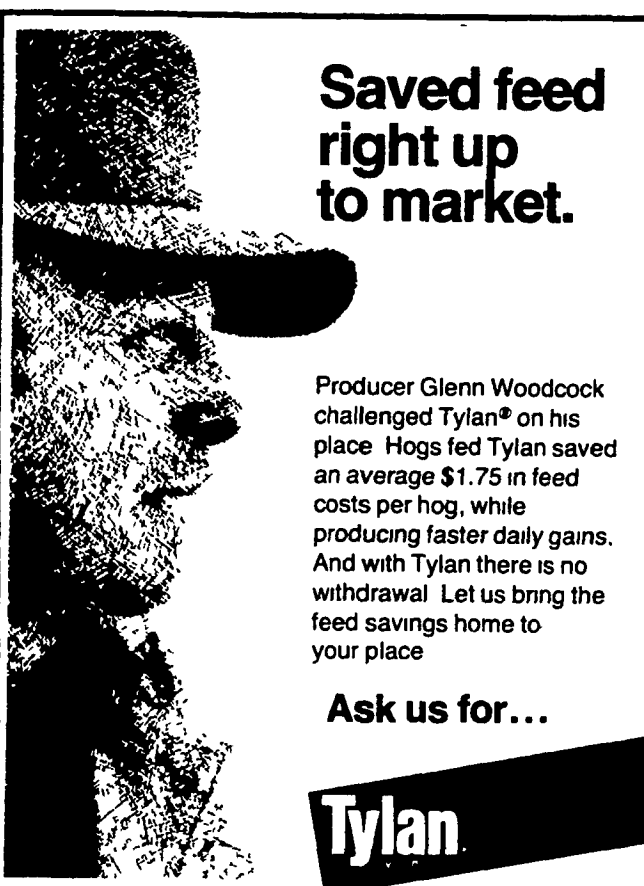
Grumel Farm Service
 Quarryville, PA
 717-786-7318

A. J. Noss & Son, Inc.
 RD2, Oley, PA
 215-987-6257

Shartlesville Farm Equipment
 Shartlesville, PA
 215-488-1326
 H. Daniel Wenger, Prop.

L. H. Brubaker, Inc.
 Lancaster, PA
 717-397-5179

Ag-Industrial Equipment
 R2, Rising Sun, MD
 301-658-5568



Saved feed right up to market.

Producer Glenn Woodcock challenged Tylan® on his place Hogs fed Tylan saved an average \$1.75 in feed costs per hog, while producing faster daily gains. And with Tylan there is no withdrawal Let us bring the feed savings home to your place

Ask us for...

Tylan

The Feed Saver.

Proven on farms like yours.

FOR MORE INFORMATION SEE YOUR FEED SUPPLIER SERVICED BY NEW HOLLAND SUPPLY CO.