

Carter advised to maintain export oriented agriculture

HONOLULU, Hawaii - A call for the Carter Administration to continue "export-oriented" trade policies, and a warning against unwarranted holding of grain reserves were voiced here this month by Ambassador Frederick B. Dent. The nation's special Representative For Trade Negotiations.

"Any increase in the price support level which would peg U.S. prices above the world market would undercut our objectives" Dent told a general session of the American Farm Bureau Federation at Honolulu's Blaisdell Center. He warned that such a course would price our products out of world markets, weaken our role as a world food supplier, tie US down as a holder of price-depressing world grain reserves, and put us into the "uneconomic process" of subsidizing our surpluses into export markets at taxpayer expense.

Dent also cautioned against agricultural trade policies that would fix quotas on foreign imports at the very time we seek expansion of our own export markets. "Trade is a two-way street,"

he noted, "You would be surprised how many people say go out and get concessions, but don't reduce the barriers protecting me against foreign exports."

The ambassador was critical of restrictive trade policies abroad. He charged that Japan, although our second largest export market, has built a six billion dollar surplus in trade with us with the help of unwise import controls that price many farm products out of reach of Japanese consumers and restrict development of its own food economy. And he noted that, while the European Community remains our principle trading partner, restrictive policies that tie variable trade levies to domestic prices, and impose heavy subsidies pose a major competitive problem. He said the danger of tying the free, fair flow of trade between nations to restrictive domestic price policies at home is self-defeating - wherever it exists.

Dent said we could move into a strong new era of trade, based on substantial economic gains in 1976. He

credited the outgoing Ford Administration with a substantial reduction of inflation. (A decline of 30 per cent in the inflation rate), an increase of six per cent in our Gross National Product, and the addition of three million jobs to the nation's work roll.



Peach Council convention hosts international speakers

KALAMAZOO, Mich. - Two speakers from France and three from Canada will be among highlights of the 1977 National Peach Council Convention to be held February 27 - March 2 in Kalamazoo, Mich.

Those speakers are Dr. R. Bernhard, who is director of a French fruit research and experiment station; Gilbert L. Herman, general director of a large, modern orchard and nursery company in France; Dr. R.E.C. Layne, fruit researcher at Harrow, Ontario; George Whaley, of Ruthven, Ontario, and Hector Delanghe of Blenheim, Ontario.

National Peach Council's 1977 convention will open February 27 with an extensive tour, followed by the annual reception that evening.

The convention will close at noon Wednesday, March 2.

In addition to the main

program, which is expected to appeal mainly to men, a number of special activities are being arranged just for the ladies.

Additional information

about the convention may be obtained by writing National Peach Council, P.O. Box 1085, Martinsburg, W. Va. 25401, or by calling NPC at 304-267-6024.

STOLTZFUS MEAT MARKET

ATTENTION FARMERS
CUSTOM BEEF BUTCHERING
OUR SPECIALTY

—FRESH BEEF AND PORK—
OUR OWN HOME MADE
SCRAPPLE & FRESH SAUSAGE

Bacon and Country Cured Hams
Orders taken for freezer Meats

PH. 768-3941

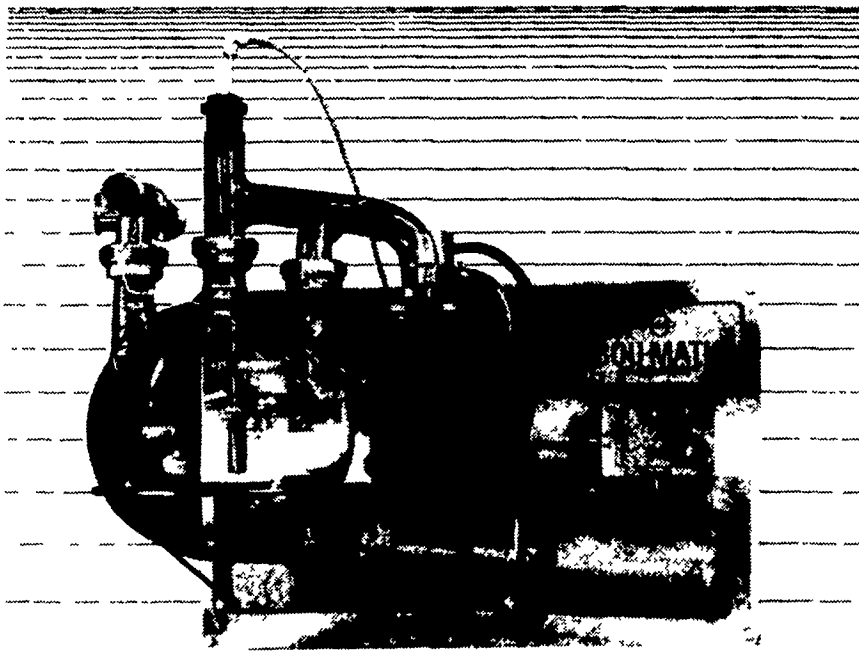
Directions: 1 block east of Intercourse
on Rt. 772 - Newport Road

STORE HOURS	THURS. 9-5	FRI. 9-8	SAT. 8-5
-------------	------------	----------	----------



NEW

MODEL 76 RECEIVER PANEL



NEW, from Bou-Matic, the MODEL 76 Receiver Panel. The Receiver Panel with a New Look but more importantly, features you have to compare with other 'panels' to fully understand the kind of design thinking that went into the finest Receiver Panel Package available.

- For example, take the HEAVY GAUGE, COMPLETELY STAINLESS STEEL back panel. No wood to rot or paint to peel. Some panels use wood for strength in their back panel, then place a "skin" of light gauge stainless steel for appearance only. Other panels are made of mild steel, then painted to offer protection from rusting. Both

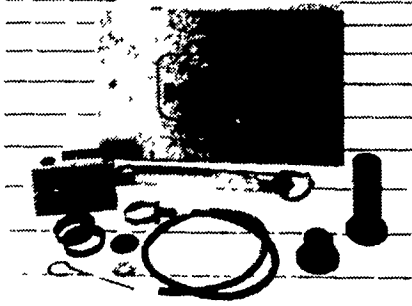
look good when new, but what happens when the wood rots or the paint peels? The back panel of the MODEL 76 is made entirely of heavy gauge stainless steel, to combine the panel strength required with durability and ease of cleaning, to look good now and in the years to come.

- A top inlet receiver jar offers the Model 76 Versatility. Versatility to position the inlets to match your milking configuration. Not reworking the milklines to match up to "fixed" receiver inlets. The Model 76 is also reversible. This means not having to order a right or left hand Receiver and hoping it fits your particular mounting.

requirements. The Model 76 is shipped in the standard left hand configuration but can be 'location reversed', with no redrilling of existing parts or additional parts being required to arrange the components to fit the milkinghouse, not the other way around.

- Included are other Standard Features such as: A redesigned milk pump head incorporating an automatic self drain for complete and automatic water drainage after wash-up. Two 2" Stainless Steel Tees and one 2" Stainless Elbow. A convenient pre-wired junction box to allow finger tip control for the 2 different milk pump modes Off-On or Momentary, to permit intermittent milk pump operation.

Also included in the MODEL 76 Receiver Panel Package is a complete list of Bou-Matic accessories: A Master Control Panel, Air Injector w/hook-up hardware, Adaptors to allow for extending the receiver inlets, milk outlet flapper valve and two rubber wash plugs, one short and one long.

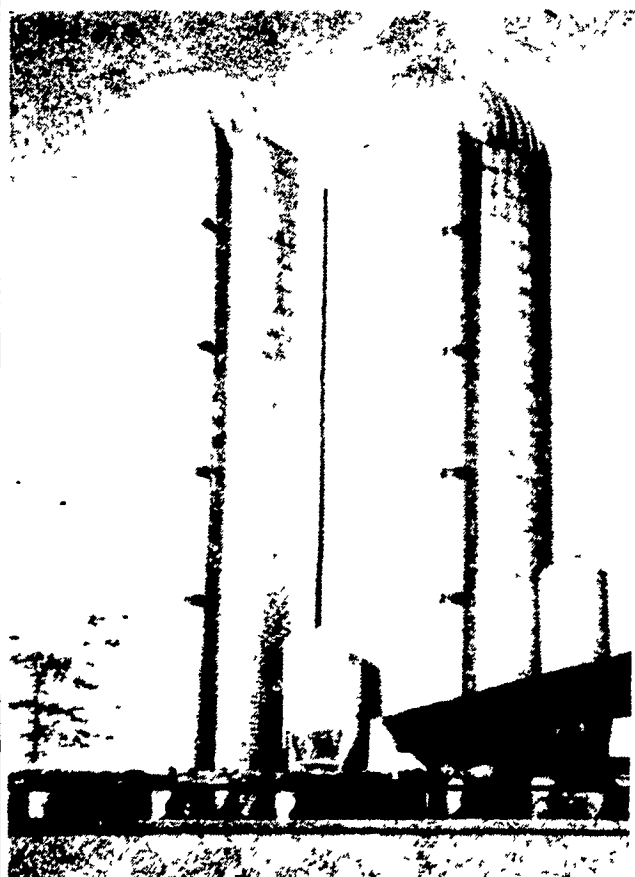


All of these features and accessories are STANDARD on the New Bou-Matic MODEL 76 Receiver Panel Package. So before you buy a Receiver Panel for your milkinghouse, compare panels available. We are sure you will agree, YOUR BEST BUY, IS BUY BOU-MATIC.

LANCASTER SILO CO., INC.

2008 Horseshoe Road - 2436 Creek Hill Road
LANCASTER, PA. 17601

MANUFACTURER AND BUILDER OF
QUALITY CONCRETE-STAVE SILO'S



Silo's For The 1977 Season Are Available Now. We Will Be Happy To Quote Your Silo Program. Take advantage of Early Delivery Terms.

GUY ROHRER (Sales) 299-3722 (Office)

872-4411 (Home)

SALES & SERVICE - 299-3721

Please Send Silo Information
Please Send Silo Unloading & Feeding Equipment Information

Name _____

Address _____

Phone _____

Lloyd Kreider

Cochranville, PA
(215) 932-2934

Clugston Implement

Chambersburg, PA
(717) 263-4103

Shenks Farm Service

Lititz, PA
(717) 626-1151

Jones Dairy Service

Lester Jones, Jr.
Medford, NJ (609) 267-5246

Carl Shirk

Lebanon, PA
(717) 274-1436