

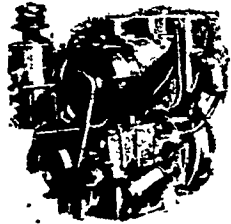
Livestock market and auction news

Leesport Auction

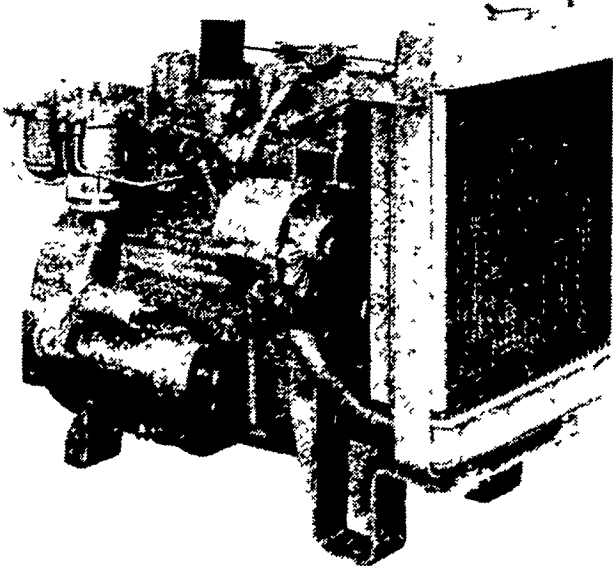
January 19, 1977
CATTLE 296. Supply included 78 head feeder cattle. Compared with last Wednesday's market, slaughter steers mostly 50 cents to \$1 lower. Slaughter heifers strong to \$2 higher.

SLANZI DIESEL

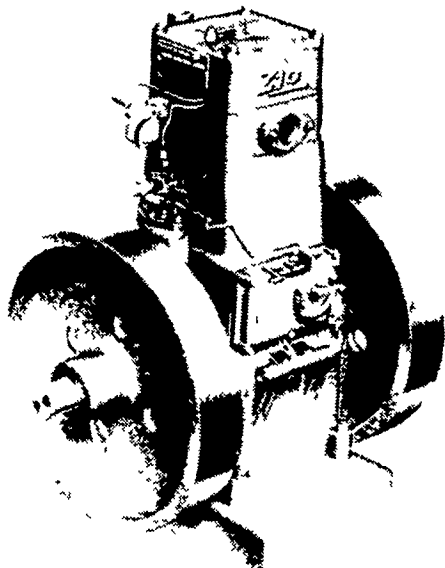
Also Good Used Diesel Engines
 (3) SR2 Lister Diesels 12 H.P. air cooled
 (2) VA Lister Diesel (slow speed) 7½ H.P. air cooled.



NOW AVAILABLE
 Perkins Diesel Engine D-3-152
 25 to 30 HP



Bamford Diesel Engine Z 410
 10 HP



CALL HORNING'S WAREHOUSE 717-354-7792

OR

AMOS SMUCKER 717-768-3996
 IF NO ANSWER CALL 717-354-4374

DIESEL & GAS

SALES & SERVICE

SMUCKER'S ENGINE SHOP

RD1, GORDONVILLE, PA 17529

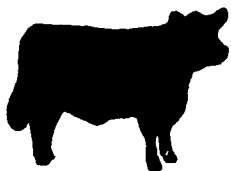
Slaughter cows mostly strong to \$1 higher on Cutter & Utility. Choice No. 2-4 1000-1450, with few 1610 lbs. 38.00-40.60, few to 41.35, High Good to Low Choice 37.00-39.00, Good 35.00-38.00, Standard 33.00-35.85, few Utility & Low Standard 28.60-33.00. Choice No. 2-4 slaughter heifers 34.60-36.10, few to 37.75, Good 32.00-34.25, Standard 29.00-31.00, few Utility 26.00-27.25. Utility & High Dressing Cutter slaughter cows 28.00-30.00, Commercial 27.50-30.85, Cutters 26.25-27.85, few Canners 21.00-25.35. Few Good slaughter bullocks 35.00-36.85, few Standard 29.10-32.00. Few Yield Grade No. 1 1420-1850 lbs. slaughter bulls 32.50-34.50; two yield grade No. 2 1415 and 1515 lbs. 25.75 and 31.60. Few Choice 400-600 lbs. feeder steers 35.50-37.25, Good 300-800 lbs. 31.00-36.00, Medium 300-700 lbs. 24.50-31.50; few Medium — Good 375-800 lbs. feeder bulls 25.00-29.00.

CALVES 147. Vealers highly uneven. One Prime vealer at 72.00, Choice 60.00-69.00, Good 49.00-55.00, Standard & Good 110-130 lbs. 35.00-47.00, 90-110 lbs. 30.00-36.00, Standard 70-90 lbs. 25.00-32.00, Utility 65-90 lbs. 17.00-25.00. Farm calves, few holstein bulls 90-110 lbs. 37.50-48.00.

HOGS 349. Barrows & Gilts mostly \$2 lower, spots \$3 lower. US No. 1-2 195-230 lbs. barrows & gilts 39.85-40.60, No. 1-3 185-250 lbs. 38.75-39.85, No. 2-3 180-255 lbs. 37.25-38.85, No. 2-4 260-345 lbs. 33.00-37.60, few No. 1-3 140-175 lbs. 30.00-34.00. US No. 1-3 300-495 lbs. sows 30.00-35.00, No. 2-3 235-585 lbs. 25.00-32.50. Boars 16.50-22.00, few to 29.00.

FEEDER PIGS 126. Few US no. 1-3 20-25 lbs. feeder pigs 7.00-7.50 per head, No. 1-3 325-35 lbs. 13.00-20.50, No. 1-3 35-45 lbs. 20.00-23.00, lot No. 1-3 50 lbs. 27.50, Utility 15-25 lbs. 2.00-8.00, 25-50 lbs. 9.00-14.00, lot 25.00 per head.

SHEEP 10. One Choice 50 lbs. wooled slaughter lamb at 53.00, few Good 30-120 lbs. 26.00-36.00. Few Slaughter ewes 17.00-20.00.



Greencastle

Greencastle, Pa.

January 17, 1977

CATTLE 92. Compared with last Monday's market, slaughter cows \$1.50 to \$2 higher. One Choice slaughter steer at 38.00, one Utility at 28.60. Utility & High Dressing Cutter slaughter cows 26.35-28.25, one at 28.60. Cutters 24.35-26.35, few Canners 21.75-23.10. Shells down to 15.85. One Choice slaughter bullock at 34.00. Few Yield Grade No. 2 1070-1615 lbs. slaughter bulls 27.35-33.85. Few Good 500-600 lbs. feeder bulls 31.25-33.00.

CALVES 160. Vealers \$2 to \$4 higher. Few Choice vealers 71.00-78.00, few Good

53.00-63.00, few Standard & Good 110-130 lbs. 38.50-45.00, 90-110 lbs. 34.00-38.00, Standard 70-85 lbs. 30.00-34.50, Utility 60-90 lbs. 10.00-27.00. Farm calves, holstein bulls 95-115 lbs. 36.00-44.00.

HOGS 37. Few US No. 1-3 225-230 lbs. barrows & gilts 42.50-43.00, one lot No. 2-3 250 lbs. 41.00, few No. 1-3 115-130 lbs. 30.25-30.75. Few US No. 1-3 320-525 lbs. sows 31.50-33.50.

FEEDER PIGS 19. Utility 45-60 lbs. feeder pigs 10.00-17.00 per head.

SHEEP 1. Not enough of anyone grade to establish a market.

St. Louis Cattle

Jan. 20, 1977

WEEKLY CATTLE REVIEW:

Receipts this week 6700: Week ago 4600: Year ago 8900

As compared to the previous weeks close, slaughter Steers and Heifers 2.00-2.50 lower. Cows fully steady, instances 50 higher. Bulls fully steady, instances 1.00 higher. Supply mainly mixed Good and Choice 2-4 975-1150 lb. Steers, around 25 per cent Heifers, 10 per cent cows.

SLAUGHTER STEERS: Mixed Choice and Prime 1025-1150 lbs. 37.50-38.50, load 1125 lbs. at 38.75 on Monday, closing week sales 37.50. Choice 2-4 950-1250 lbs. 36.00-38.00, closing 36.00-37.50. Mixed Good and Choice 2-4 900-1175 lbs. 35.00-36.50. Good 2-3 900-1100 lbs. 33.00-35.50. Standard and Good 2-3 1000-1350 lb. Holsteins 31.00-33.50. Standard with few Good 2-3 950-1225 lbs. 27.00-29.00.

SLAUGHTER HEIFERS: Mixed Choice and Prime 2-4 875-1050 lbs. 35.50-37.00, closing sales 35.50-36.00. Choice 2-4 800-1050 lbs. 34.00-36.50, closing week sales 34.00-35.50. Several 34.50-35.50. Mixed Good and Choice 2-3 700-975 lbs. 33.50-35.50. Good 2-3 29.50-34.50.

COWS: Utility and Commercial 2-4 25.00-27.00. Few Boning Utility 1-2 27.00-27.50. Canner and Cutter 1-2 23.00-25.00. Low dressing canner 19.00-23.00.

BULLS: YG 1-2 950-1800 lbs. 26.00-30.00. YG 1 1300-1800 lbs. at 31.00.

FEEDERS: Including around 800 at Thursday Auction. Feeder Steers and Heifers steady. Supply mostly Choice and Mixed Good and Choice 400-800 lb. steers and 350-700 lb. Heifers.

FEEDER STEERS: Choice 300-600 lbs. 32.75-35.00, 600-800 lbs. 34.00-35.25. Mixed Good and Choice 350-600 lbs. 30.25-33.00. Couple lots Good 290-300 lbs. 28.00. Couple lots standard 375-525 lb. Holsteins 23.00-23.75.

Baltimore USDA

January 17, 1977

CLOSE:

CATTLE 450: Slaughter steers firm to 50 cents higher, slaughter heifers not fully tested. Cows steady to \$1.00 lower, bulls scarce. Supply 60 per cent slaughter steers and heifers, 25 per cent cows, balance feeders and bulls.

SLAUGHTER STEERS: Choice 2-4 1025-1250 lbs. 39.60-41.00; Good 2-3 900-1400 lbs. 34.00-38.50; Standard and low Good 2-3 29.75-34.00

SLAUGHTER HEIFERS: few Standard and Good 1-2 625-1025 lbs. 26.25-30.00

COWS: Utility 2-3 25.50-28.60; couple 28.85-29.35; Cutter 22.25-26.50

BULLS: Yield Grade 1 1020-1365 lbs. 34.00-35.50

HOGS 600: Compared with Thursday Barrows and Gilts \$2.25 higher. US 1-3 200-230 lbs. 41.75-42.00, 25 head 42.25, US 2-3 230-250 lbs. 40.75-41.75

SOWS: Steady US 1-3 300-600 lbs. 30.00-31.00

VEAL & CALF AUCTION 50: few Prime Vealers 205-265 lbs. 69.00-74.00; Choice 130-210 lbs. 50.00-62.00; Good 120-250 lbs. 30.00-41.00; Standard & low - Good 65-110 lbs. 30.00-35.50

SHEEP AUCTION 50: lot Choice & Prime wooled slaughter lambs 96 lbs. 50.75; lot Choice & Prime 118 lbs. 49.00.

Martinsburg

Martinsburg, Pa.

January 17, 1977

CATTLE 151. Compared with last Monday's market, slaughter cows \$2 to \$2.50 higher. Choice slaughter steers 38.50-40.50, Good 36.00-38.50, Standard 32.00-36.00, Utility 29.50-33.50. Choice slaughter heifers 36.50-40.00, Good 34.00-38.00, Standard 32.50-36.00, Utility 28.50-32.00. Utility & High Dressing Cutter slaughter cows 28.50-30.50, Cutters 26.50-29.00, Canners 24.50-27.00, Shells down to 21.00. Yield Grade No. 1 slaughter bulls 33.50-36.50; yield grade No. 2 30.00-34.00.

CALVES 257. Vealers \$1 to \$5.50 lower. Choice vealers 60.00-70.00, Good 53.00-64.00.

Standard & Good 110-130 lbs. 38.00-52.00, 90-110 lbs. 30.00-40.00, Standard 70-85 lbs. 26.50-30.00. Farm calves, holstein bulls 90-120 lbs. 35.50-44.00.

HOGS 259. Barrows & Gilts \$1 to \$2 higher. US No. 1-2 200-230 lbs. barrows & gilts 42.80-43.60, No. 1-3 190-240 lbs. 42.50-43.00, No. 1-3 115-130 lbs. 32.50-38.50. US No. 1-3 295-500 lbs. sows 28.50-33.50, No. 2-3 300-600 lbs. 24.50-28.00. Boars 18.00-22.00.

FEEDER PIGS 0. No sales on offer.

SHEEP 0. No sales on offer.

QUONSET®

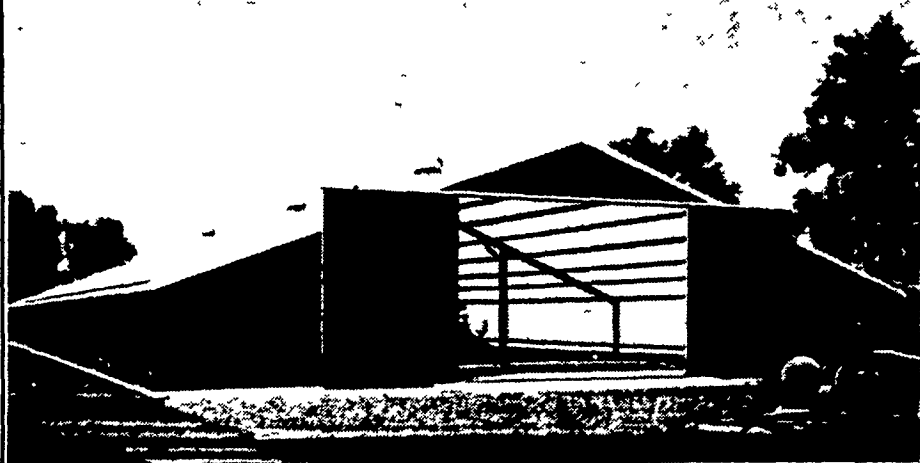
POL-BARN™

All new STEEL "pole barn"
 — economical, strong,
 versatile, attractive.

VERNON E. MYER

Steel Buildings
 And Grain Storage
 R.D. 4, Lebanon, PA 17042

Phone: (717) 867-4139



Financing Or Leasing Available

Quonset Pol-Barn (with 18" wing units)

NO. 1 IN SKID LOADERS
A. L. HERR & BRO.
NO. 1 IN SKID LOADER SALES
 SEE US AT
 312 PARK AVE.
 QUARRYVILLE, PA
 PH.: 717-786-3521