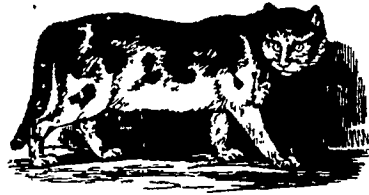


# THE OLD FARMER'S ALMANAC

JAN. 24-30, 1977

Snow comes on wings as silent as an owl's.

Ice fishing best about now Robert Frost died Jan 28, 1963  
 First quarter of the moon Jan 27, Raccoons are mating now  
 Average length of days for the week, 9 hours, 47 minutes South  
 Africa diamond mines discovered Jan 27, 1905 Edison patented his  
 incandescent lamp Jan 27, 1880 The riches that are in the heart  
 cannot be stolen



Ask the Old Farmer: What is the opposite of "neap" tide, and I don't mean "flood" tide? Seems to me I have heard a regular name for it, but can't remember EKL, NYC

You are correct Normally, the tides are called "flood"

and "ebb," but when the moon is in the proper phase, you get "spring" and "neap" tides, one abnormally high, and the other proportionately low

Home Hints: Clean children's fuzzy stuffed animals with dry cornstarch just rub it in, let it stand briefly, and brush it out

## OLD FARMER'S WEATHER FORECASTS

New England: Flurries to start, then thaw after midweek, week's end brings sun

Greater New York-New Jersey: Sunny and fair through Wednesday, then rain by Friday, clearing and mild over weekend

Middle Atlantic Coastal: Mild and fair at week's start, then rain after midweek, sunny and warm end of the week

Piedmont & Southeast Coastal: Week begins sunny and mild with showers expected by Tuesday along with coastal rain; cloudy and rainy for rest of week

Florida: Rain through Wednesday, warm and cloudy with showers in north for week's end

Upstate N.Y.-Toronto & Montreal: Sunny with flurries through Thursday, mild with a thaw for remainder of week

(All Rights Reserved Yankee Inc. Dublin N.H. 03444)

## Belleville Auction

January 19, 1977

**CATTLE** 176. Compared with last Wednesday's market, slaughter cows strong to \$1.50 higher. One Choice slaughter steer at 39.50, few Good 34.75-37.60, few Standard 30.50-34.50. Standard & Good slaughter heifers 29.85-32.85. Utility & High Dressing Cutter slaughter cows 26.60-30.50, Cutters 25.00-27.50, few Canners 24.00-25.85. Couple Yield Grade No. 1450 and 2125 lbs. slaughter bulls 33.35 and 34.50.

**CALVES** 144. Vealers grading Standard & Good about steady. Few Choice vealers 65.00-77.00, Good 45.00-59.00, Standard & Good 110-130 lbs. 35.00-45.00, 90-110 lbs. 26.00-35.00, Standard 70-85 lbs. 20.00-25.00. Farm

calves, few holstein bulls 95-115 lbs. 34.00-38.00.

**HOGS** 313. Barrows & Gilts 75 cents to \$1.75 higher. US No. 1-2 200-235 lbs. barrows & gilts 41.25-42.20, one lot 42.50, No. 1-3 200-235 lbs. 40.50-41.60, few lots No. 2-4 250-350 lbs. 37.70-38.25. US No. 1-3 300-500 lbs. sows 29.00-33.50, Utility 175-250 lbs. 20.50-26.50. Few Boars 15.00-19.00.

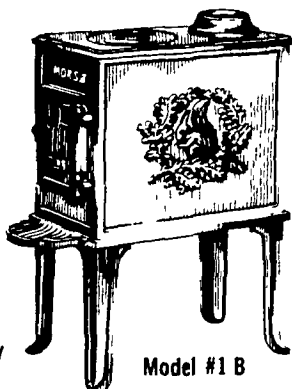
**FEEDER PIGS** 323. US No. 1-3 25-35 lbs. feeder pigs 14.00-21.50 per head, No. 1-3 40-65 lbs. 22.00-28.50 per head.

**SHEEP** 12. Choice 80-100 lbs. woolled slaughter lambs 51.00-55.00.



## MORSO - THE WOOD STOVE THAT PAYS FOR ITSELF

- \* Air tight design
- \* Baffle system
- \* Long burning
- \* 70-75% efficiency
- \* 240 pounds cast iron
- \* Enamel finish
- \* Inner cast liners
- \* Large feed door
- \* Burns 22" log
- \* 5,186 cu in
- \* Holds fire overnight
- \* 6,000 cu. ft heating capacity



Model #1 B

We have many to choose from including Ashley type wood stoves, wood and coal combination stoves and ranges

Build your own chimney with insulated stainless steel chimney pipe we have it in stock

This winter is an exceptionally good winter to burn wood and save on fuel bills

Clearance special 25% off on Ashley type thermostatically controlled models priced for quick sale while they last

Send for literature Delivery available

**LUKE G. SENSENIG**

R D #1 Glenwood Drive  
 Ephrata, Pa 17522  
 Phone 717 733 0703

Located 1 1/2 miles Northeast of the Green Dragon Farmer's Market

## East Coast Carlot Meats

January 19, 1977

Compared to Tuesday's close: demand for beef good; commitment made for 58 loads. Carcass Steer Beef 1.00-1.50 higher; Heifer Beef 1.75-2.75 higher. Cow beef steady in limited test, boneless beef .50-1.50 higher. Choice beef cuts: Hind-quarters .50-1.00 higher, No comparison on other cuts. Lamb compared to last week steady to 1.00 higher. Fresh pork loins firm to 1.25 higher.

### STEER BEEF

(21 loads confirmed)  
 Choice 3 600-800 lbs. 6200-6250 1.00-1.50 higher, Choice 2-3 Holsteins 600-800 lbs. 6075, 4 600-800 lbs. 5900, Good 3 600-800 lbs. 5900 1.00-1.25 higher

### HEIFER BEEF

(11 loads confirmed)  
 Choice 3 500-700 lbs. 6175 1.75-2.75 higher, Good 3 500-700 lbs. 5800-5850 no comparison

### COW BEEF

(2 loads confirmed)  
 Utility Bng 1-2 600 lbs. up 5100 no comparison, Canner-cutter 1-2 350 lbs. up 5400-5450 steady

### CHOICE 3 PRIMAL BEEF CUTS

(22 loads confirmed)  
 Steer hinds 145-190 lbs. 7450-7500 .50-1.00 higher, arm chucks 90-130 lbs. 5400 no comparison, arm backs 100-150 lbs. 6200 no comparison, steer rounds 70-90 lbs. 8000 no comparison, full plates 2800-2900 steady, short plates 2400-2500 no comparison, briskets 3800-4000 steady to firm, flanks untrimmed 2300-2350 generally steady

### LAMB CARCASS

**CHOICE AND PRIME 3-4** (13 loads confirmed)  
 Compared to last week 55 lbs. down 106.00-108.00, bulk 106.00-107.00 1.00 higher 55-65 lbs. 9600-9900, bulk 9700-9800 steady to 1.00 higher 65-75 lbs. 8800-8900 1.00 higher



## INCREASE YOUR PRODUCTION!

LEASE QUALITY DAIRY COWS  
 DHIA HERDS AVAILABLE  
 DAIRY FARM LEASING COMPANY  
 1700 DUPONT AVENUE SOUTH  
 MINNEAPOLIS, MINNESOTA 55403

CALL 612-377-1489 TODAY!

## Lebanon Valley Auction

Fredericksburg, Pa. January 18, 1977

**CATTLE** 293. Compared with last Tuesday's market, Choice 1000-1200 lbs. No. 2-4 slaughter steers 37.85-40.50, Good 35.85-37.60, few Standard 32.50-36.25. Few Choice slaughter heifers 36.00-38.25, Good 32.10-34.10, Standard 29.50-32.50. Utility & High Dressing Cutter slaughter cows 27.85-30.00, Cutters 25.50-28.50, Canners 23.60-26.00, Shells down to 21.85. Few Good slaughter bullocks 34.50-35.75, few Utility 29.00-30.85. Yield Grade No. 1 1400-2100 lbs. slaughter bulls 33.00-36.00.

**CALVES** 210. Choice vealers 61.50-71.00, Good 45.00-58.00, Standard & Good 110-130 lbs. 40.00-48.00, 90-110 lbs. 34.00-40.00, Standard 70-85 lbs. 32.00-35.00, few Utility 50-65 lbs. 10.00-25.00. Farm calves, holstein bulls 95-115 lbs. 35.00-43.00.

**HOGS** 473. US No. 1-2 200-245 lbs. barrows & gilts 41.75-42.50, one lot 43.35, No. 1-3 190-230 lbs. 41.25-42.00, No. 2-

3 210-260 lbs. 41.10-41.60, No. 1-3 180-185 lbs. 39.85-41.85. US No. 1-3 325-525 lbs. sows 30.00-33.25. Boars 23.00-25.00. **FEEDER PIGS** 0. No sales on offer. **SHEEP** 0. No sales on offer.

## New Holland Dairy

New Holland, Pa.

Wednesday, Jan. 20, 1976  
 Reported receipts of 121 cows, 10 heifers, and two bulls. Market lower than last week's market.

Load of Pennsylvania fresh cows 740-840, springers 710-760. Load of Pennsylvania fresh cows 470-715; Load of Wisconsin fresh 585-625; Load of Pennsylvania fresh cows 465-630, springers 510-615.

Local cows 425-750; springing heifers 450-525; 20 head of purebred heifers, bred and open 330-515; bulls 240-285.

## GREEN DRAGON LIVESTOCK SALES

1 mile North of Ephrata, PA



## COWS COWS COWS BUYERS FROM 3 STATES

Regular consignments from Ray Kyper, Alfred Albright, Bob Kennedy, Dale Brewer and Ed Stover plus local consigners.

Lots of good Northern Feeders and Stockers.

## SALE EVERY FRIDAY

Bulls, Steers, Slaughter Cows, Lambs and veal calves.

11:00 A.M. - Beef Sale Stockers & Feeders 200 to 250 each week.

12:30 P.M. - Dairy Cows  
 7:00 P.M. - Small Animal Sale

For Special Sales and Herd Dispersals on the farm or at our barn or other market information. call: Office 717-733-2444.

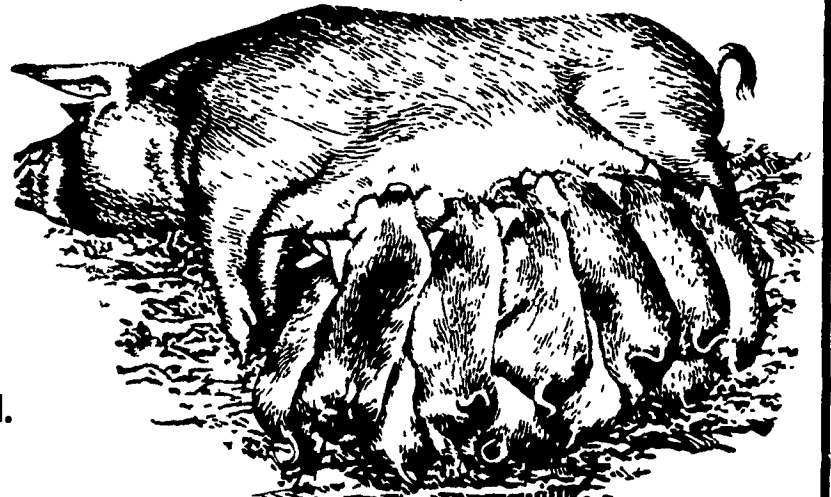
Walter H. Risser, Proprietor

## NEW HOLLAND SALES STABLES INC.

12 miles east of Lancaster on Route 23, New Holland, PA.

## WEEKLY FEEDER PIG SALE EVERY WEDNESDAY

Sale To Start Promptly At 1 P.M.



WE WILL RECEIVE YOUR PIGS ANYTIME FROM 7 A.M. WED. MORNING

State Graded Until 12 Noon. All pigs inspected by State Approved Veterinarian.

State tags available at our office for you to tag pigs at home to save 25¢ tagging charge.

Tags delivered if you call 717-354-4341 our office in advance.

CALF SALE TO BE HELD IN NEW SALES PAVILION EVERY THURSDAY AT 6:30 P.M.

**NORMAN KOLB**  
 717-397-5538

**ABE DIFFENBACH**  
 717-393-4464