

Farm Calendar

[Continued from Page 10]

14th annual Agribusiness public meeting on programs for agriculture, at the Cultural Center, Trenton, N.J. 9:30 a.m.

New Jersey State Agricultural Convention, today and tomorrow.

Ephrata Area Adult Farmers meeting. Topic: dairy breeding. 7:45 p.m. at the high school. AI reps on hand with presentation.

York County Holstein directors luncheon, 11:30 a.m. at Moser's Restaurant, York

Pennsylvania Farmers Union convention continues in Camp Hill at the Penn Harris Motor Inn.

Lime, Fertilizer and Pesticide Conference at Penn State, continues through Thursday. Extension offices have details.

Wednesday, Jan. 26

Delaware Dairy Day, Ramada Inn, Route 13, Dover, 10 a.m.

Mount Joy Farmers' Cooperative Assn. holds annual banquet and meeting at Hostetter's Banquet Hall, Mount Joy, 12 noon.

Drumore Township Planning Commission meets on land use controls, 8 p.m. at the Township building.

Organizational meeting of the Southern Lancaster County 4-H Soil and Water Conservation Club, 7:30 p.m. at the Shutz Environmental Center, Lancaster County Central Park.

Regular monthly meeting of the Berks County Conservation District, board of directors, 2 p.m. at the Ag Center.

Thursday, Jan. 27

Annual meeting of the Farm and Home Foundation of Lancaster County, 6:30 p.m. at the Farm and Home Center.

Seminar, co-sponsored by the York Area Chamber of Commerce and the York County Ag Extension Service. Avalongs Restaurant, 9:30 a.m.

Dairy Engineering meeting, 7:30 p.m. at the Farm and Home Center, Lancaster

Garden Spot Young Farmers swine tour, leaves high school at 12:30 p.m. Tour limited to GSYFA members only.

Annual Extension farm income tax meeting at South Tamaqua, Zerby's Ice Cream House, 10 a.m. to 3:30 p.m.

Adult welding class, 7-9 p.m. at Garden Spot High School. Classes continue every Thursday evening through Feb. 17

Friday, Jan. 28

64th annual meeting of the Chester County Cooperative Extension Service, 7 p.m. at the Kimberton Fire Hall (2 miles west of Phoenixville)

Montgomery County Extension Service annual meeting, Towamencin Fire Hall, Kulpsville. Social hour, 6:15 p.m., dinner at 7 p.m.

State Grange leaders meeting at Chester Valley Grange, 7:30 p.m.

Seminar for Pennsylvania grain dealers and other agribusiness people on pesticides, 9 a.m. to 5 p.m. at the Holiday Inn, King of Prussia.

5th annual Penn International Tractor Pull, begins today, first session at 1 p.m., evening program at 7:30. See details on page 31 of this issue.

Saturday, Jan. 29

Winter International Tractor Pull continues, pulls at 1 p.m. and 7:30 p.m. See details on page 31 of this issue.

Economy stressed

The annual Pennsylvania Five-Acre Corn Club affords an excellent opportunity to examine costs and returns in corn production on farms throughout the Commonwealth. Approximately eight farmers participate in the cost of production budget option each year, says William K. Waters, Extension area farm management specialist, Kittanning, Pa.

The following budgets were developed from the crop years of 1974 and 1975: Conventional tillage-corn harvested as ear corn - crops value per acre - \$360.25. Minimum tillage-corn harvested as ear corn - crop value per acre - \$340.72. Conventional tillage-corn harvested as shelled corn - crop value per acre - \$290.12. Minimum tillage-corn harvested as shelled corn -

crop value per acre - \$370.42. No-Till-corn harvested as ear corn-crop value per acre - \$328.62. No-Till-corn harvested as shelled corn - crop value per acre - \$339.07. The budgets are from those counties from ap-

proximately the southern two-thirds of the state or what we refer to as the medium and long season variety areas, says Waters.

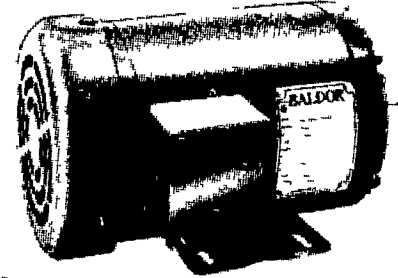


TRANSPLY, INC.

Industrial Supplies

Lancaster
330 Centerville Rd.
Ph 717 397-4885

Dillsburg
6 mi. So. Rt. 194
Ph 717-432-9714
or 845-2685



BALDOR MOTORS
1/4 H.P. to 100 H.P.
1 Phase - 3 Phase

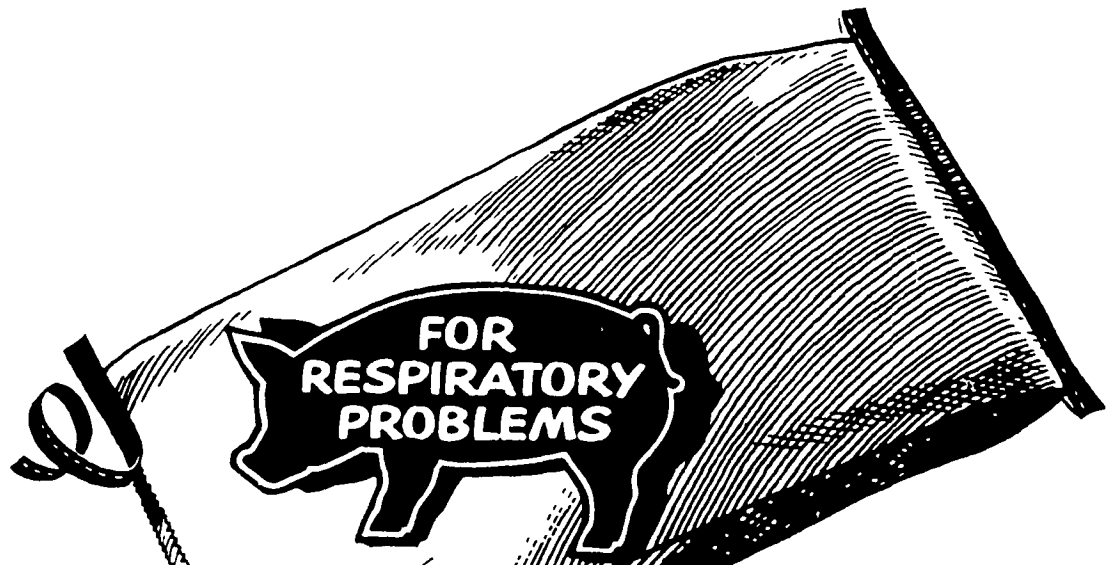
V-Belts
Sheaves

Roller Chain
Sprockets

**YESTERDAY'S EQUIPMENT
DOESN'T HELP
TODAY'S FARMER.
NEITHER DOES
YESTERDAY'S INSURANCE.**

Future Services Insurance
Meeting Tomorrow's Needs Today
5 East Main Street • Mechanicsburg, Pa. 17055 • (717) 766-7621

**There's no other way to stop
both pneumonia* and atrophic
rhinitis losses with one feed:**



*Caused by
Pasteurella multocida
and *Corynebacterium*
pyogenes.

Tylan Plus Sulfa
tylosin sulfamethazine

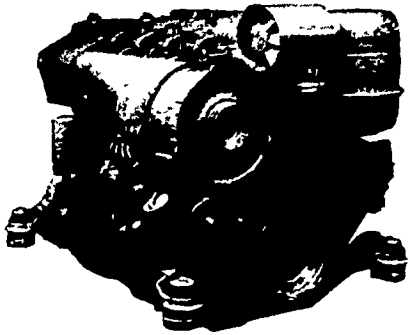
there's no other way

For Tylan plus Sulfa in your swine feed.

See your local feed supplier serviced by

New Holland Supply Co.

COST



CUTTER

The cost of diesel fuel has jumped nearly 70 percent since October, 1973 and it's still about three cents a gallon cheaper than gasoline. Higher fuel costs call for a closer look at total operating costs when you buy engines. Deutz air-cooled engines use 20 to 40 percent less fuel than most water-cooled diesel engines - far less than gasoline engines. And they are competitively priced. So hadn't you better buy or specify the cost cutter - Deutz? 10 to 500 bhp.



**STAUFFER
DIESEL, INC.**

312 W. Main St.
New Holland, PA
Ph. 717-354-4181