

# Poultry Market Reports

## Weekly New York Egg Market

From Monday, Jan. 10 to Friday, Jan. 14

	Mon.	Tues.	Wed.	Thurs.	Fri.
<b>WHITE</b>					
Ex. Large	71	73	73	76	76
Large	71	73	73	76	76
Mediums	67	69	69	72	72
Pullets	55	55	55	55	55
Peewees	35	35	35	35	35
<b>BROWN</b>					
Large	74	76	76	78	78
Mediums	Unquoted				
Pullets	Unquoted				
Peewees	Unquoted				
<b>Off Grade</b>					
Large	64	66	66	68	68
Checks	45	45	45	45	45
Tone—Firm.					

Copyright 1977 Urner Barry Publications

## New England Weekly Shell Egg Report

Tuesday, January 11, 1977

Prices paid per dozen Grade "A" brown eggs in cartons delivered to retail stores:  
No market report available at press time.

## NEST RUN EGGS

Prices are from Egg Clearinghouse, Inc., (ECI) Durham, N.H. and reflect trading prices for gradeable nest run eggs (GNR) on ECI, a nationwide trading center for producers, packers and marketers. GNR eggs are classified by weight in 30-dozen cases, and traded in lots of either 300 or 750 cases. Prices are FOB buyers dock, and are computed Tuesday and Thursday of each week. This week's prices for each classification were:

Classification	New Weight Per Case	Tuesday	Thurs.
Extra Large	51 lbs.		
Class 1 - Large	48 lbs.	64	66
Class 2 - Large	45 lbs.	62	65
Class 3 - Medium	42 lbs.	58	63
Class 4 - Small	39 lbs.	48	48
Breaking Stock	48 lbs.	53	53
Checks	48 lbs.	47	47

## Baltimore Eggs

Thursday, Jan. 13

Prices unchanged today, Cartoned eggs: prices to an occasional promotion on retailers, state graded (min. large sizes has increased one case sale) white: Grade demand to a fairly good A Large 75 to 80; Grade A level. Supplies are fully adequate for needs. Medium 71 to 76.

## Delmarva Poultry

Wed. Jan. 12

Ready to cook movement continues very good with slaughter schedules very heavy. Today's LTL asking prices generally 40 cents on Plant Grade and 41 cents on Grade A. Advance interest slow in developing as buyers and sellers await further marketing developments. Live supplies ample at heavy weights. Undertone very firm.

Current boiler-fryer negotiated prices for immediate includes mostly multiple-drop shipments to New York City from Delmarva.

Range US Grade A 39-40; Plant Grade 38-39; Premium X US Grade A 41-45; Premium X Plant Grade 40-43;

WTD Avg. US Grade A 39.90 Plant Grade 38.84; Premium X US Grade A 43.44; Premium X Plant Grade 42.44.

X - includes special services, selected competitive brands, etc.

## Eastern Pa. & N.J. Poultry

Wednesday, Jan. 12

Prices generally 1 cent lower, on light hens. Offerings fully adequate for a fair unaggressive demand. Offerings of heavy type fully adequate for a fair call.

Prices paid at farm: Light type hens 10-12, mostly 12 in Pa. and mostly 12 in N.J. Heavy type hens TFEWR.

## Philadelphia Eggs

Wednesday, Jan. 12

Prices trended higher within unchanged ranges. Carton demand good. Offerings adequate overall. Undertone fully steady. Grade A extra large 74½-78½, Large 73-77½, Medium 68½-73.

## Hay Markets

### New Holland

New Holland, Pa. Monday, Jan. 10

HOGS: 1466  
Retail: 43-44  
Heavyweight: 41-42  
Lightweight 40-41  
Wholesale: 42-43  
Sows 25-30  
Boars: 20-30  
Shoats: 630  
No. 1 and 2 39-48 lbs. 60-67; No. 50-71 lbs. 44-62; No. 2 38-51 lbs. 61-67, 54-86 lbs. 42.50-61.00; No. 2 and 3 34-46 lbs. 49 50-61.00, 47-93 lbs. 46.50-55.00 No. 3 40-75 lbs. 43.50-51.00; Utility 30-68 lbs. 30-44. Gilts 60-110 per head.

### Regional Hay

January 10, 1977

(all Hay no. 2 and better, prices paid by dealers at the farm, price per ton).

Hay and straw steady, more being offered.

Alfalfa 80.00-88.00, Mixed Hay 65.00-75.00, Timothy Hay 60.00-70.00, Straw 50.00-55.00, Mulch 25.00-35.00



RISSER'S POULTRY, INC.

347 N. Broad Street Lititz, Pa. 17543

Phone 717-626-2153 717-626-5466

## Green Dragon

January 7, 1977

Prices per ton:  
27 loads hay & 12 loads straw  
Alfalfa, couple 70.00-72.00, Timothy, few 58.00-78.00, some down to 49.00, Mixed hay, few 61.00-69.00, some down to 49.00; Clover, one load at 65.00; Straw 62.00-70.00; Ear Corn, 4 loads 63.00-68.00; Corn fodder, one load at 53.00

## Vintage

Thursday, Jan. 13, 1977

Alfalfa Hay Mixed 71.00-80.00; Mixed Clover & Timothy 60.00-71.00 and Rough Hay 56.00-59.00.



## Harvey Z. Martin

Wednesday, Jan. 12, 1977

108 Loads  
Alfalfa 44 to 100; Clover 61 to 72; Timothy 48 to 74; Mixed Hay 53 to 93; Stubble Hay 51 to 60; Straw 51 to 80; Corn Fodder 2 loads, 50 to 61; Soybean Stalks 1 load, 40; Ear Corn 57 to 65; Shelled Corn 1 load, 2.45 per bu.; Mushroom Soil 1 load, approx. 9 ton 75.00 a load; Firewood 22 to 25 per ton.

## New Holland

### Horse

Monday, January 10

Reported receipts of 160 horses, mules, and ponies. Market stronger than last week's market.

Mules 315-485; better horses 320-505; driving horses 210-400; riding horses 175-275; lightweight 22-26; heavyweight 29-31; mares 15-40; colts 10-25; geldings 15-35; and larger pointies 50-75.

## POULTRYMEN

FOR A BRIGHT IDEA



CALL HALLER ELECTRIC, INC.

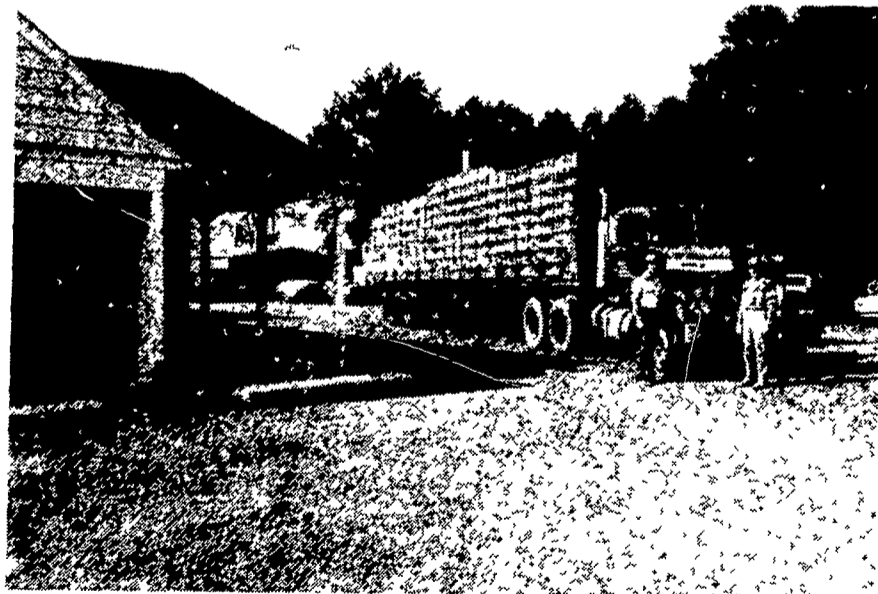
Route 2 Denver, Pa. 17517

SPECIALIZING IN POULTRY HOUSES, ALSO GRAIN DRYERS

SEE JOHN FOR ALL YOUR WIRING NEEDS.

CALL 215-267-7610

"THAT'S A BIG 10-4 ON YOUR NEXT DELIVERY OF MOYER'S PULLETS, GOOD BUDDY!"



Whether your order is for 300 or 30,000 pullets we can handle it. Dave Overholt and Clyde Moyer are part of our crew of courteous, knowledgeable pullet handlers. If your preference is for locally grown and fed started pullets - give us a shout!

MOYER'S IS MOVIN' ON!

Moyer's CHICKS, INC.

DEKALB BROWN & WHITE EGG LAYERS

Quakertown, PA 18951 (215) 536-3155

HUBBARD WHITE MT. BROILERS

## Lancaster Farming

P.O. Box 266 - Lititz, PA 17543  
Office: 22 E. Main St., Lititz, PA 17543  
Record-Express Office Building  
Phone. Lancaster.717-394-3047  
or Lititz 717-626-1164

Robert G. Campbell, Publisher  
Dieter Krieg, Editor  
Joanne Spahr, Associate Editor  
Judy Mitchell, Berks County Correspondent  
Joyce Bupp, York County Correspondent

Subscription Price \$4 per year  
Established November 4, 1955  
Published every Saturday by Lancaster Farming  
Lititz, PA  
Second Class Postage paid at Lititz, PA 17543

For Address Change form or new subscription see Classified Section.

Members of Newspaper Farm Editors Assn., Pa Newspaper Publishers Association, and National Newspaper Association

Pennsylvania  
Pork Producers  
Council

Join your fellow pork producers in supporting pork promotion and production research to keep hogs a profitable farm enterprise. Tell your market or buyer that you want 10 cents per market hog or 5 cents per feeder pig deducted to support these programs. Most markets and buyers will cooperate fully if you let them know.

The PPPC was formed and is funded and directed by producers. There is no Government Agency involved.

For more information, contact:

**HERBERT SCHICK,**  
Secretary-Treasurer  
Kutztown, R.D. 2, Pa.  
19530  
Phone 215-285-6519