

Livestock market and auction news

East Coast Carlot Meats

Jan. 5, 1977
Compared to Tuesday's close: demand and commitments moderate for beef as reported by USDA. Around 20 loads confirmed on steer and heifer beef. Steer beef mostly steady to .50 higher. No comparison on heifer beef. Cow beef in limited test steady to weak. Bnls. beef steady to 4.00 lower. Lamb compared to last week 2.00-4.00 higher. Fresh pork loins 2.00-6.00 higher.

STEER BEEF
Choice 3 550-700 lbs. 64.75-65.00 steady to .25 lower; 3 600-800 lbs. 64.00-64.50 steady to .50 higher. Good 3 600-800 lbs. 60.50 steady.
HEIFER BEEF
Choice 3 500-700 lbs. 62.25 no comparison.
COW BEEF
Utility Bng. 1-2 600 lbs. up ltd. 48.50 weak. Canner-Cutter 1-2 350 lbs. up ltd. 51.00 generally steady.

Midwest Carlot Meat Trade

January 5, 1977
Compared to Tuesday's close: fresh pork cut trade closing rather slow after opening fairly active, demand late moderate. Fresh loins 50-3.50 higher, picnics steady, Boston Butts not established, spareribs steady to 1.25 higher, skinned hams 50-2.00 higher, bellies steady to 1.50 higher.

FRESH PORK CUTS
Loins 14-dn lbs. 73.00 3.50 higher, 14-17 lbs. 70.50-72.00; late 72.00 3.50 higher, 17-20 lbs. 69.00 50-1.00 higher
Picnic 4-8 lbs. 45.00 steady
Boston Butt - no sales
Spareribs 3-dn lbs. 78.50-80.25 steady to 1.25 higher, 3-5 lbs. 58.75
Skinned hams 17-20 lbs. 68.50-69.00 50-75 higher, 20-26 lbs. 69.00; load 70.00 1.25 higher, 26 and up lbs. 64.00; 62.25-63.00 frozen 2.00 higher
Bellies, SDLS 10-12 lbs. 49.50, 12-14 lbs. 52.00 steady, 14-16 lbs. 52.00-52.50 1.00-1.50 higher, 18-20 lbs. 49.50 1.00 higher
BNLS picnic 55.00 fresh
OFFAL & Variety
Pork feet 15.25
Compared to Tuesday's close: Beef trade slow.

BEEFALO HYBRID CATTLE

45 LIMOUSIN-HEREFORD CROSS COWS & BRED BEEFALO'S FOR SALE.
- Rapid gains on grass and roughage
- 55-65 lb. Births - up to 1100 lb. yearling
- Test data show 62 percent carcass dress out
- We stock and distribute Pureblood Beefalo Semen and Half-Blood Beefalo heifers and bulls.
- Visit our farm and see our animals

SEMEN \$12 an ampule

NOW TAKING ORDERS FOR 3/4 BULLS & HEIFERS

BEEFALO N & J

4270 Quakerbridge Road
Princeton, NJ 08540
609-896-0336

Member World Beefalo Associat:on

Middleburg

CHOICE 3 PRIMAL BEEF CUTS
Steer hinds 145-190 lbs. 75.50-78.00 no comparison. Arm Chucks 90-130 lbs. 52.00 2.00-4.00 higher.
LAMB, CARCASS CHOICE & PRIME 3-4 (COMPARED TO LAST WEEK)
55 lbs. down 103.00-105.00, bulk 104.00 4.00 higher; 55-65 lbs. 94.00-95.00 2.00 higher; 65-75 lbs. 83.00-84.00 2.00-4.00 higher.

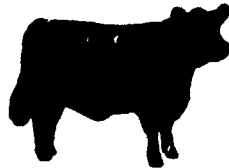
FRESH PORK CUTS
Loins 14 lbs. down 75.00 no comparison; 14-17 lbs. 74.00-75.50 2.00-6.00 higher. Bnls. Picnics fresh 58.25.
SMOKED PORK
Skd. hams 16-20 lbs. 75.00 steady.
Boneless beef 90 per cent chemical lean, fresh 69.50-70.00 steady to 1.00 higher.
Boneless beef 85 per cent chemical lean, fresh 62.00-65.50 .50-4.00 lower.
Beef trimmings 50 per cent chemical lean, fresh 24.00-24.50 steady to 1.00 higher.

January 4, 1977
CATTLE 238. Compared with last Tuesday's market, slaughter cows steady to \$1.75 lower. Good 900-1450 lbs. slaughter steers 34.75-39.75, Standard 32.00-34.75, Utility 28.00-32.00. Choice 900-1100 lbs. slaughter heifers 36.00-39.75, Good 32.00-36.00, Standard 28.00-32.00, Utility 25.00-28.00. Utility & High Dressing Cutter slaughter cows 24.75-28.75, one at 29.85, Cutters 23.75-26.25, Canners 21.50-23.75, Shells down to 16.75. Choice slaughter bullocks 37.25-39.25, Good 34.00-37.00, Standard 32.00-34.00. Yield Grade No. 1200-2300 lbs. slaughter bulls 30.50-37.85; yield grade No. 2 900-1200 lbs. 27.25-30.50. Medium 350-700 lbs. feeder steers 30.50-36.75.
CALVES 167. Vealers steady to \$2 lower. Prime vealers 70.00-76.50, Choice 60.00-70.00, Good 48.00-58.00, Standard & Good 110-130 lbs. 42.00-48.00, 90-110 lbs. 30.00-42.00, Standard 75-85 lbs. 25.00-30.00. Farm calves, holstein bulls 95-115 lbs. 35.00-45.00.
HOGS 432. Barrows & Gilts \$1.50 to \$3.25 lower. US No. 1-2 200-230 lbs. barrows & gilts 39.75-41.10, No. 1-3 190-240 lbs. 39.00-39.75, No. 2-3 185-250 lbs. 38.00-39.00, No. 2-4 250-300 lbs. 35.00-38.00. US No. 1-3 300-675 lbs. sows 23.50-32.75. Boars 200-700 lbs. 17.75-22.75.

FEEDER PIGS 402. US No. 1-3 10-20 lbs. feeder pigs 8.50-16.00 per head, No. 1-3 20-40 lbs. 16.00-25.00, No. 1-3 40-60 lbs. 25.00-37.50 per head.
SHEEP 0. No sales on offer.

New Holland Dairy

New Holland Sales Stables
New Holland, Pa.
Wednesday, Jan. 5, 1977
Reported receipts of 106 cows, 44 heifers, and nine bulls. Market steady with last week's market.
Load of Franklin County springers 650-725; Load of Pennsylvania fresh cows 725-850, springers 700-810; Load of Pennsylvania fresh cows 500-610, springers 565-825; Load of Wisconsin fresh cows 690-710; Load of Pennsylvania fresh cows 660-760; Load of New York fresh cows 570-640.
Locally consigned cows 475-800; Springing heifers 475-550; Bred Heifers 275-500; Bulls 275-480.



FORTY-TWO YEARS OF SERVICE . . .
to the farmer, to the dealer and to the packer.
May we serve you?
S. K. SHOTZBERGER, INC.
LIVESTOCK TRANSPORTATION
Gene Zwally, President
Marvin Johns, Secy.-Treasurer
P.O. Box 925, Lancaster, PA 17604
Phone: 393-4641 (day or night)

NEW HOLLAND SALES STABLES INC.

12 miles east of Lancaster on Route 23, New Holland, PA.

WEEKLY FEEDER PIG SALE EVERY WEDNESDAY

Sale To Start Promptly At 1 P.M.

WE WILL RECEIVE YOUR PIGS ANYTIME FROM 7 A.M. WED. MORNING

State Graded Until 12 Noon. All pigs inspected by State Approved Veterinarian.

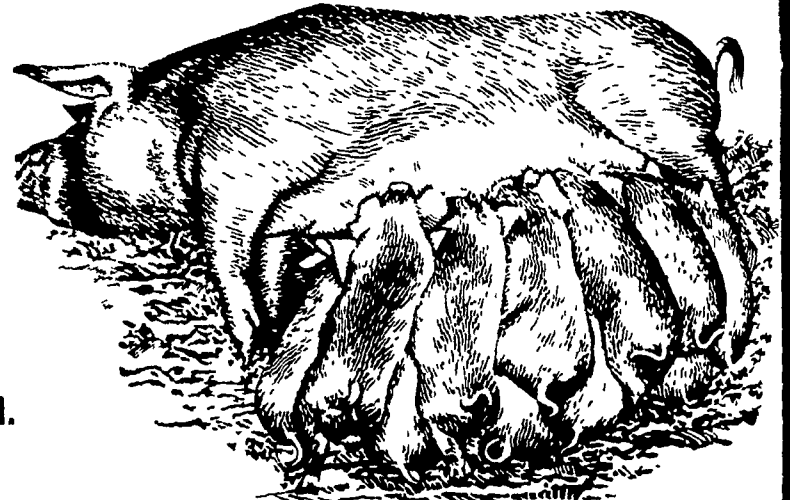
State tags available at our office for you to tag pigs at home to save 25¢ tagging charge.

Tags delivered if you call 717-354-4341 our office in advance.

CALF SALE TO BE HELD IN NEW SALES PAVILION EVERY THURSDAY AT 6:30 P.M.

NORMAN KOLB
717-397-5538

ABE DIFFENBACH
717-393-4464



Lebanon Valley Auction

Fredericksburg, Pa.
January 4, 1977
CATTLE 272. Compared with last Tuesday's market, slaughter steers steady to 50 cents lower. Slaughter cows 25 cents to \$1.25 lower. Slaughter bulls 50 cents to \$1 lower. Choice 2-4, 950-1200 lbs. slaughter steers 38.85-41.10, individual High Choice at 42.50, Good 35.00-38.75, Standard 31.50-34.50, few Utility 28.10-30.35. Few Choice slaughter heifers 36.00-39.60, few Good 35.00-35.60, few Standard 28.00-32.00. Utility and High Dressing Cutter slaughter cows 25.60-27.60, individual at 28.10, Cutters 24.10-26.00, Canners 21.50-24.25, Shells down to 18.75. Few Choice slaughter bullocks 35.35-36.60, Good 33.35-35.35, Standard 31.35-33.50, Utility 29.00-30.50. Yield Grade No. 1, 1200-1600 lbs. slaughter bulls 29.75-35.35.
CALVES 226. Vealers

grading Standard and 70-100 lbs. \$2 to \$3 lower. Few Prime vealers 69.00, Choice 56.50-69.00, Good 42.50-52.50, Standard 33.00-42.00, 90-110 lbs. 33.00-33.00, few Utility 50-60 20.00-25.00. Farm Calves Few Holstein bulls 90-115 36.00-41.00.

HOGS 312. Barrows & gilts \$2 to \$3 lower. US No. 195-230 lbs. barrows and 38.85-40.25, No. 1-3 185 lbs. 38.25-38.50, few lots 2-3 200-230 lbs. 38.00-38.25. No. 1-3 350-500 lbs. 24.75-26.75, few No. 2-3 650 lbs. 22.00-24.00. B.

FEEDER PIGS 40. US No. 1-3 50-75 lbs. feeder 26.50-36.50 per head.
SHEEP 2. Not enough any one grade to establish market.

POULTRYMEN

FOR A

BRIGHT IDEA

CALL

HALLER ELECTRIC, INC.

Route 2

Denver, Pa. 17517

SPECIALIZING IN POULTRY HOUSES, ALSO GRAIN DRYERS

SEE JOHN FOR ALL YOUR WIRING NEEDS.

CALL

215-267-7610