

MEET OUR FRIENDLY SALESMEN AT THE PA FARM SHOW.



"STOP AND TALK TO US"

(LOOK FOR THE GOOD GUYS IN COWBOY HATS)

MONROE BUFFENMEYER JR.



JOLLY JUNIOR
Home Phone 717-273-9089

LLOYD J. WENGER



COWBOY LLOYD
Home Phone 717-866-7147

**OUR BUYER CARL I. WENGER WILL ALSO BE
AROUND THE FARM SHOW MOST OF THE WEEK**



"THE THINKER"

**SEE OUR AD ON PAGES 70, 71
BUSINESS PHONE 717-866-2138**



HAPPY HARRY
USED PARTS "EXPERT"



BARGAIN LARRY
NEW PARTS SPECIALIST

Film ready for showing

LANCASTER - The first public showing of the 16 mm film shot last Fall on Lancaster County farms and business locations is scheduled next week at the Pennsylvania Farm Show. "For Silage Sake," with a full sound track, was filmed on the farms of John Harnish, Washington Boro, and John L. Landis, 1801 Colebrook Road, and in the computer room of Weaver's Poultry in New Holland. Featuring new concepts in oxygen-controlled crop and feed storage in concrete silos, the 13½ minute movie explains how a silo works. It features a computerized pressure test now being used by the sponsors. And a breather bag system that traps the inside expanding gases during the day and returns them into the silo when it cools at night is shown.

The sponsors of the movie are Van Dale, Inc., national farm equipment manufacturers with home offices in Minneapolis, Minn.; Weaver Star Silo, Inc., Myerstown, Pa., and Midwest Silo Systems, Ontario, Canada, originators of the computer testing program. Studio By The Bridge, a Lancaster photography and advertising agency under the direction of Everett R. Newswanger, produced the film.

Wheat prospects dim

Under the snow lie many bare fields that normally would have a tinge of greenness. These were seeded to winter wheat this past Fall in normally considered the right period for proper seed germination and plant growth. Winter came early and cold dry ground stopped wheat plant growth. Many fields exhibited very little sign of wheat. It follows then that the extreme cold will severely jeopardize any real wheat production. Harvesting next July will probably be slight. Farmers will need to make some dramatic decisions on those seeded acres. Shall they "cold sweat" it out? Re-work soil and plant oats? Switch to corn or soybeans? Other Pennsylvania acres are in the same fix on the wheat situation as well.

Pest tests set

LANSDALE, Pa. - The 1977 schedule for the testing for commercial certification of pesticide operators has been released by the Department of Agriculture Office, here. The Lehigh County Vo-Tech School site will have exams given on January 13, March 17, May 12, July 14, September 1, October 6, October 20, November 10, December 8.

The Berks County Agricultural Center have exams set for February 17, April 14, June 9, August 11, September 15, October 11, October 25, November 22, December 20.

The time period is 7 to 10 p.m. each night. Anyone interested in being present to take the examinations should contact the Pesticide Inspectors at the Pennsylvania Department of Agriculture, Lansdale. Phone 215-368-3000 to make reservations.

World's First
The Fokker F-32, the world's first four-engine airliner, carried passengers in unprecedented luxury in the early 1930's. The planes cost approximately \$100,000 each and included reclining seats with cushions stuffed with rubber balls to give passengers the feeling of "riding on air".

ANNOUNCING

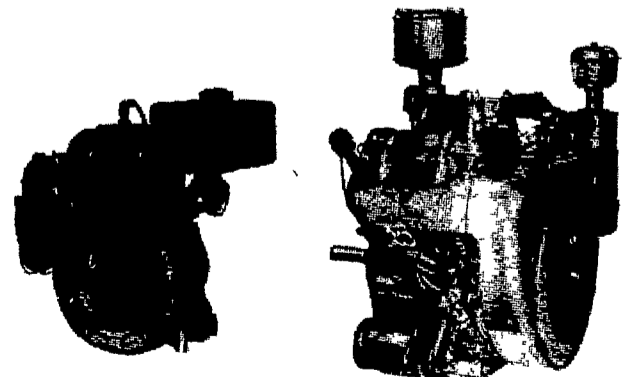


AUTHORIZED DEALER

**WISCONSIN
ENGINES**

4.6 H.P. TO 65 H.P.

HEAVY DUTY INDUSTRIAL TYPE ENGINES



Complete Sales & Service

WES STAUFFER SMALL ENGINES

R D 3 Ephrata, PA 717 733 9174
¼ mi S of Rt 322 on Pleasant Valley Rd.
Ephrata Exit, new Rt 222