

Hog Markets

Lancaster Market

HOGS: Barrows and gilts mostly 1.00 higher.
BARROWS AND GILTS:
 S 1 200-235 lb. 42.00-42.25,
 S 1-2 200-240 lb. 40.50-41.10,
 S 1-3 200-240 lb. 40.00-40.50,
 S 2-3 200-260 lb. 39.35-40.00

Lancaster Auction

HOGS: Barrows and gilts firm to 50 higher.
BARROWS AND GILTS:
 US 1 200-240 lb. 42.00-42.50;
 US 1-2 200-240 lb. 41.00-41.60;
 US 1-3 200-250 lb. 39.75-40.75;
 Few US 2-3 245-260 lb. 38.25-39.75

have a nice weekend...



GREEN DRAGON LIVESTOCK SALES

1 mile North of Ephrata, PA

COWS COWS COWS

BUYERS FROM 3 STATES

Regular consignments from Ray Kyper, Alfred Albright, Bob Kennedy, Dale Brewer and Ed Stover plus local consigners.

Lots of good Northern Feeders and Stockers.

SALE EVERY FRIDAY

Bulls, Steers, Slaughter Cows, Lambs and veal calves.

11:00 A.M. - Beef Sale Stockers & Feeders; 200 to 250 each week.

12:30 P.M. - Dairy Cows
 7:00 P.M. - Small Animal Sale

For Special Sales and Herd Dispersals on the farm or at our barn or other market information call: Office 717-733-2444.

Walter H. Risser, Proprietor

New Holland

New Holland Sales Stables
 New Holland, Pa.
 January 3, 1977

HOGS: 1529
 Retail 42
 Heavyweight: 39-40.50
 Wholesale: 40-42
 Sows: 25-31
 Boars: 20-28
 SHOATS: 664
 No. 1 and 2 36-49 lbs. 69.50-75.00; 56-67 lbs. 58.00-65.00
 No. 2 31-49 lbs. 65.00-80.00, 52-89 lbs. 47.50-65.00; No. 2 and 3 24-36 lbs. 72.00-77.00; 38-45 lbs. 57.00-75.00, 49-65 lbs. 48.00-65.00; No. 3 31-48 lbs. 44.00-72.00; 53-70 lbs. 45.50-54.00; Utility 35-47 lbs. 53.00-60.00.

Indianapolis

Thursday January 6
 INDIANAPOLIS HOGS: 1500
 Barrows & gilts active, 1.00-1.50 higher.
 US 1-2 200-230 lb. 40.00-40.25; US 1-3 200-245 lb. 39.50-40.00.

St. Louis

ST. LOUIS HOGS: 5000.
 Barrows & gilts active, 1.00 higher.
 US 1-2 200-240 lb. 40.25-40.50; US 1-3 200-250 lb. 39.50-40.25; US 2-3 250-270 lb. 39.00-39.50.

Peoria Auction

Thursday January 6
 PEORIA HOGS: 3000
 Barrows & gilts active, opening 1.00 higher.
 US 1-2 200-230 lb. 40.00-40.50; US 1-3 200-240 lb. 30.50-40.00.

Vintage

Saturday, Jan. 1, 1977
 Total 194 head.
 Few at 42.50-43.50; No. 2 & 3 39.85-41.50; Light Hogs 160-185 32.00-35.50; Sows 26.75-27.35.

Wednesday, Jan. 5, 1977
 Total 593 head.
 No. 1 40.00-40.60; No. 2 & 3 39.00-39.85; Heavy Hogs 265-280 32.50-38.00; 350-425 23.00-29.25; Light Hogs 165-180 29.50-32.00; Sows 25.50-29.25; Heavy Boars 19.25-20.00; Light Boars 20.25-23.00.

Vintage Sales Stables, Inc.
 January 5, 1977
Feeder Pigs
 No. 3-30-40 lbs. 37-48; 40-60 lb. \$2's and No. 3's 45-55; 50-60 lbs. No. 1 and No. 2 52-58; 72 lb. No. 2's 47-½; 97 lb. No. 3's 39-½



Valley Livestock

Valley Stockyards
 Athens, Pa.
 Monday, January 3, 1977
 Reported receipts of 476 calves, 98 hogs, 184 cows, 47 heifers, 22 steers, 35 bulls, and five sheep. Calf market easier than last week's market, calf market steady.
 Veals 45 to 68.50; Bobs 23 to 38; Grassers and feeders 20.00-34.00; Lambs 30.00-38.50; Sheep 10.00-14.00; Hogs 23.00-41.00; Pigs 12.00-25.00; Heifers 24.00-31.00; Steers 24.00-34.00; Bulls 26.00-33.50; Cows, good 25.00-27.50; Cows, med. 22.50-23.00; Cows poor or small 17.50 - 21.00; Horses 20.00-35.00; Ponies 8.00-15.00; Goats - one goat 12.00.



Futures Trading

Closing Bids as of Thursday, Jan. 6

Chicago Cattle	Chicago Hogs	New York Maine Potatoes	New York Fresh Eggs
----------------	--------------	-------------------------	---------------------

January			62.75
February	38.05	36.90	55.75
March		7.35	55.70
April	38.50	34.40	49.95
May		10.04	47.15
June	40.80	36.90	
July		37.55	
Aug.	41.90	36.20	
Sept.			
October	42.85	34.10	

Trend—Cattle are higher, Hogs are mixed, Potatoes are higher, and Eggs are higher.
 Markets Provided by Commodity Department Reynolds Securities, Inc.

CHICAGO GRAIN FUTURES

(Closing bids as of Thursday, Jan. 6)

	Wheat	Corn	Soybeans	Soybean Meal
January			7.12	210.00
March	2.81	2.62	7.18	212.60
May	2.86½	2.67¼	7.17¾	212.50
July	2.91	2.71½	7.13	211.50
Aug.			7.03	208.50
Sept.	2.96¾	2.70½	6.72½	198.00
Oct.				188.00
Nov.			6.53¾	187.50
Dec.	3.06½	2.69¾		

Trend—Corn is higher, Wheat is higher, Soybeans are higher, and Soybean Meal is higher.
 Markets Provided by Commodity Department Reynolds Securities, Inc.

U.S. Inspected Livestock Slaughter

Estimated Daily Livestock Slaughter Under Federal Inspection

	CATTLE	HOGS	SHEEP
Week to Date	535,000	1,055,000	91,000
Same Period Last Week	553,000	1,075,000	91,000
Same Period Last Year	601,000	1,100,000	103,000

READ LANCASTER FARMING FOR FULL MARKET REPORTS

J. M. HOOBER INC.

As you know there are no easy ways to farm and to raise livestock. You work hard with your hands & back & you try to use all the knowledge your parents taught you, then you trust in the Lord.

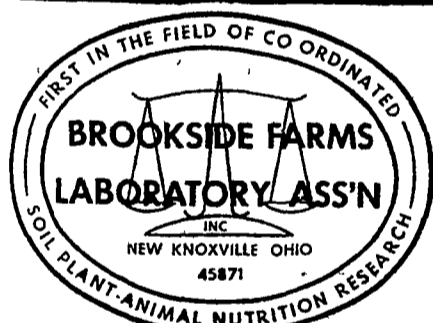
Our business has no short cuts or easy ways either. We just work hard to supply you with quality feeder cattle & stand ready to assist you when your livestock is ready for market.

NEXT FEEDER PIG SALE JANUARY 18, 1977

Please Call Us Soon
 PH: (717) 397-6191, 569-2084, 626-5659

CONTACT:

JOHN CAMPBELL
 Atglen, PA
 (215) 593-5529
GARY MCGEE
 Spring Run, PA
 (717) 349-2340
DAN DERR
 Conowingo, MD.
 (301) 378-3280



National Reputation - Local Service

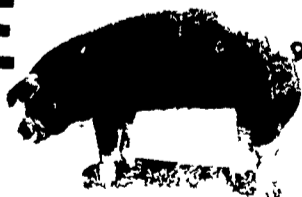
ATTENTION CATTLE FEEDERS

Do you want to make buying your stockers and feeders easy. It can be very simple. Just call and give us your order. All orders filled to your exact specifications. Call us anytime. We can be very helpful.



NEXT FEEDER PIG SALE

TUESDAY, JAN. 18 - 1 P.M.



Consign all your feeder pigs to Walter M. Dunlap & Sons where they will be handled by a capable and experienced staff.

Feeder pigs received from 6 A.M. to 11 A.M.

WALTER M. DUNLAP & SONS

LANCASTER STOCK YARDS

Consignors can get state tags at our office, thereby saving 25c marketing expense

For Further Information, Call 717-397-5136