

## CHESTER DHIA

[Continued from Page 157]

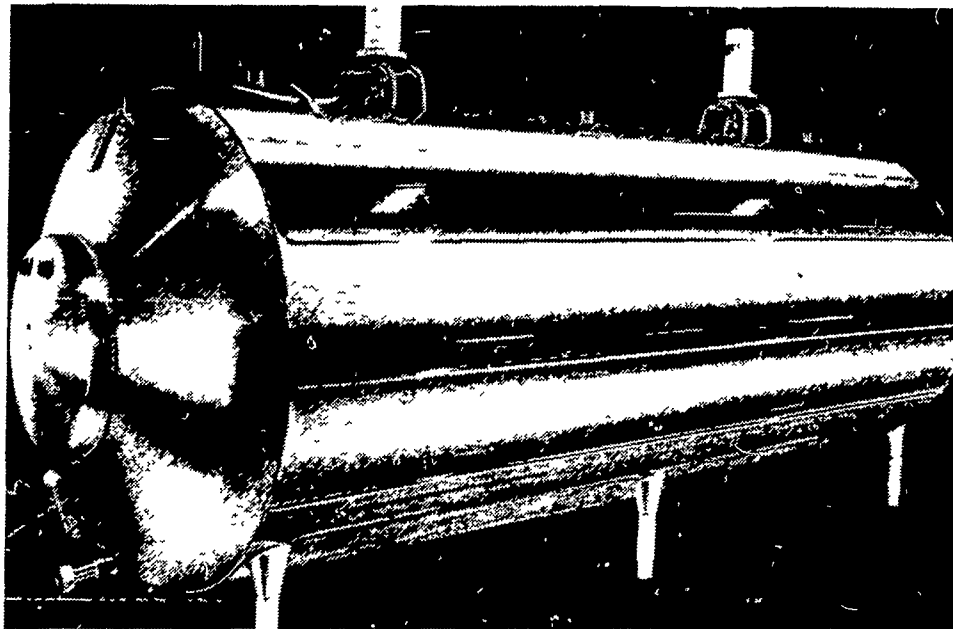
Newton Evans, Jr. 3	90.1	85.5	52.1	3.4	1.76
Hargret Dairy, Inc. B3	48.7	87.9	44.7	3.9	1.76A
David Weaver 3	50.4	85.3	46.2	3.8	1.75
J. Harold Bare B3	57.7	87.5	46.2	3.8	1.75
Earl M. Weir 3	33.0	83.2	48.4	3.6	1.74
William P. Moore B3	140.1	86.9	42.5	4.1	1.73
Richard Proud B3	50.3	85.4	41.3	4.2	1.72
Herman Stoltzfus B	52.4	90.8	44.1	3.9	1.72
Donald Hostetter, Jr. 3	81.1	88.2	45.5	3.8	1.71
Christ L. Stoltzfus B3	49.2	83.7	41.9	4.0	1.68
George P. Lamborn 3	36.7	78.5	41.9	4.0	1.68
Ronald F. Elliott B3	70.2	84.4	41.0	4.1	1.67
Ben S. Beiler B3	58.8	85.1	43.2	3.8	1.66
Vernon Guest B3	62.3	89.4	39.7	4.2	1.66A
Kimberton Farm School, Inc. 2	61.4	88.7	34.0	4.9	1.65
Elam Petersheim 3	75.5	85.8	42.7	3.9	1.65
Walmoore No. 3 B3	133.1	85.7	42.4	3.9	1.65
Richard L. Breckbill B3	74.9	84.5	40.8	4.0	1.65A
Harold J. Ranck 3	53.7	89.2	41.4	4.0	1.64

Merle J. King B3 Willowland Farm 3	75.9	89.3	44.3	3.7	1.63
Merle J. King B3	59.6	86.1	41.9	3.9	1.62
Miller McDowell, Jr. B3	79.2	79.6	45.3	3.6	1.62
Milton & Joyce Edwards G8	46.0	90.4	42.2	3.8	1.62
Timothy Kauffman 3	64.7	89.2	39.4	4.1	1.61A
Milton & Joyce Edwards G8	50.5	92.5	42.6	3.8	1.60
Merle J. King B3	66.1	89.3	45.0	3.6	1.60A
Hargret Dairy, Inc. B3	76.9	81.3	43.5	3.6	1.58
Kulp Bros. G3	47.7	82.8	42.1	3.8	1.58A
E. Kent High B3	104.0	84.8	38.7	4.1	1.57
H. & R. Mason 3	109.4	80.9	38.9	4.0	1.57A
Samuel B. Acker B3	116.5	82.4	40.6	3.8	1.56
Eugenia C. Madeira 2	215.1	82.1	37.9	4.1	1.56
Lenape Dairy Farm B3	46.0	90.9	32.7	4.7	1.55
Elmer A. Mast B8	349.3	84.5	41.3	3.8	1.55
Llanduey Farm G3	69.8	78.1	37.1	4.2	1.54
Marsh Acres Farm B3	107.1	86.9	40.1	3.8	1.54
Vernon Guest B3	105.1	83.1	38.7	4.0	1.53
David Hurst G3	61.3	84.8	38.0	4.0	1.53A
Charles H. Gable 1	38.2	81.9	37.9	4.0	1.53A
Landis S. Reid B3	51.9	84.4	35.2	4.3	1.52
John W. Yeager B3	66.0	84.5	38.7	3.9	1.52A
	21.1	79.9	36.8	4.1	1.51

Samuel B. Acker B3	216.6	85.7	38.9	3.9	1.51	
Omer S. Smoker B3	75.4	83.6	39.5	3.8	1.51	
George Steele & Sons B3	86.5	86.5	37.5	4.0	1.51	
Martin M. Weaver B8	93.8	87.6	41.0	3.7	1.50A	
<b>OWNER —</b>	<b>BREED</b>	<b>AGE</b>	<b>DAYS</b>	<b>LBS</b>	<b>%</b>	<b>FAT</b>
<b>COW'S NAME</b>			<b>IN MILK</b>	<b>MILK</b>	<b>FAT</b>	<b>LBS</b>
Jefferson D. Yoder No. 66	3	4-8	305	24,019	4.2	1011
No. 56	3	4-2	305	22,262	3.7	815
Samuel B. Acker B30	3	8-2	305	21,675	4.3	928
No. 285	3	5-3	305	20,676	4.1	857
R 164	3	9-2	305	19,472	4.3	835
No. 350	3	4-3	305	18,323	4.4	813
No. 315	3	4-6	305	21,128	3.7	772
R 160	3	8-9	305	19,520	3.9	765
No. 311	3	4-4	305	15,560	4.7	736
No. 272	3	6-3	299	17,204	4.2	727
No. 302	3	5-1	305	18,368	3.9	720
No. 293	3	5-0	305	20,632	3.4	707
No. 379	3	3-6	305	16,189	4.4	707
Bryncoed Farms P 439	3	2-10	305	25,248	3.7	927
Howard Swavely III No. 3	3	4-1	291	19,328	4.8	922
Newton Evans, Jr. No. 17	3	6-3	305	23,712	3.9	920
No. 16	3	4-1	305	17,784	4.9	868
No. 89 A	3	7-6	264	18,688	4.5	838
No. 142	3	4-1	305	27,507	3.0	831
No. 59 A	3	6-3	305	25,901	3.2	829
No. 159	3	4-0	305	18,061	4.6	823
No. 151	3	4-4	305	20,958	3.8	803
No. 143	3	4-4	305	21,016	3.6	752
Jacob K. Stoltzfus Sunshine	3	6-10	305	22,777	4.0	911
Noel	3	9-1	305	19,567	4.5	889
L Naomi	3	5-5	305	22,297	3.8	843
Fairy	3	2-1	305	17,979	4.1	745

[Continued on Page 159]

# Zero introduces the Super Cooler



### FEATURING . . .

- ★ Quicker cooling to lower temp. ★ Solid state controls
- ★ Lower installation cost ★ Lower service cost
- ★ More efficient cooling

A remarkable new concept that speeds milk cooling, reduces installation and service cost, fits into any building and delivers better quality milk. All new refrigeration and electrical systems.



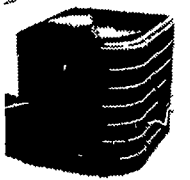
Patented Zero Spatter-Spray



Better Placement Of Controls



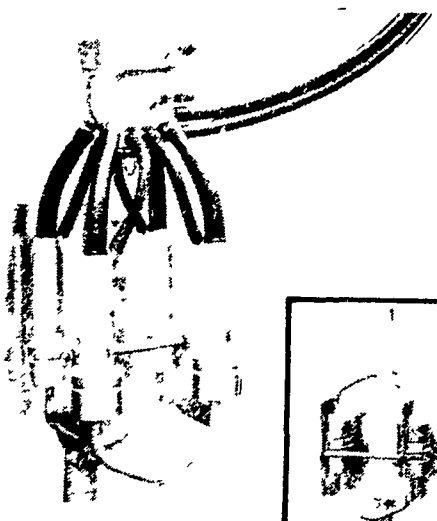
Faster Cooling



Faster Cooling Outside

Ask us about the nineteen points of superiority in the super cooling system

## Zero<sup>®</sup> Concord



### SPECIAL FEATURES OF ZERO

#### C.I.P. UNIT WASHER

Eliminates the drudgery of carrying units to milk room.

Automatically drains

Self closing

All stainless steel construction

## C.I.P. UNIT WASHER

New Zero Concord unit with specially designed stainless steel shells to make clean in place possible.

Ease of unit washing operation is simplified.

Fits any concord milking systems either vacuum or non-vacuum.

An easy and simple unit to install.

**VISIT OUR DISPLAY AT THE PA FARM SHOW  
BOOTH NO.'S 411-413**

COME IN, WRITE OR PHONE FOR FULL INFORMATION!

**J. M. HORST  
SERVICE CO.**

Box 231, Quentin, PA Phone (717) 274-1242

A Zero in the right place could change your profit picture.

