

# One last look at year 1976

By DIETER KRIEG

The year just ended was a good one by almost any standard. Prices of most farm products were good to strong, and in spite of rising costs, farmers found themselves to be in a rather favorable position. Lancaster County farmers who participated in the 60th annual Farm Show took a greater share of top honors than ever before. The Bicentennial came, and area farmers who had farms in the family for 100 or more years were recognized in a series of articles dubbed "Bicentennial Farm Features." In November,

those farmers who classified themselves as Democrats, cheered the idea of having a farmer back in the White House.

A quick review of the year follows:

## PERFECT EGGS

## Farmers Home Administration alters income requirements

LANCASTER - The Lancaster office of the Farmers Home Administration advises that the income limits have been increased from \$12,900 adjusted gross income to \$15,600 adjusted gross income. This means that more families or individuals who cannot qualify for conventional credit may be able to qualify for FmHA financing on homes. Adjusted gross income is determined by deducting 5 per cent of gross income and \$300 for each child under the age of eighteen. As an example, a family or an individual, with two children, earning \$17,000 would have an adjusted income of \$15,550 and would be eligible from the income standpoint.

Never in the 59-year history of the Pennsylvania State Farm Show have eggs ever received a perfect score of 100 points. At the 60th Farm Show, in 1976, however, it happened twice. Dutchland Farms and the R. W. Sauder egg firm, both of Lancaster County, captured the unusual and most

For further information, contact: Farmers Home Administration, 1583 Arcadia Road, Lancaster, Pa. 17601.

## Management eyed

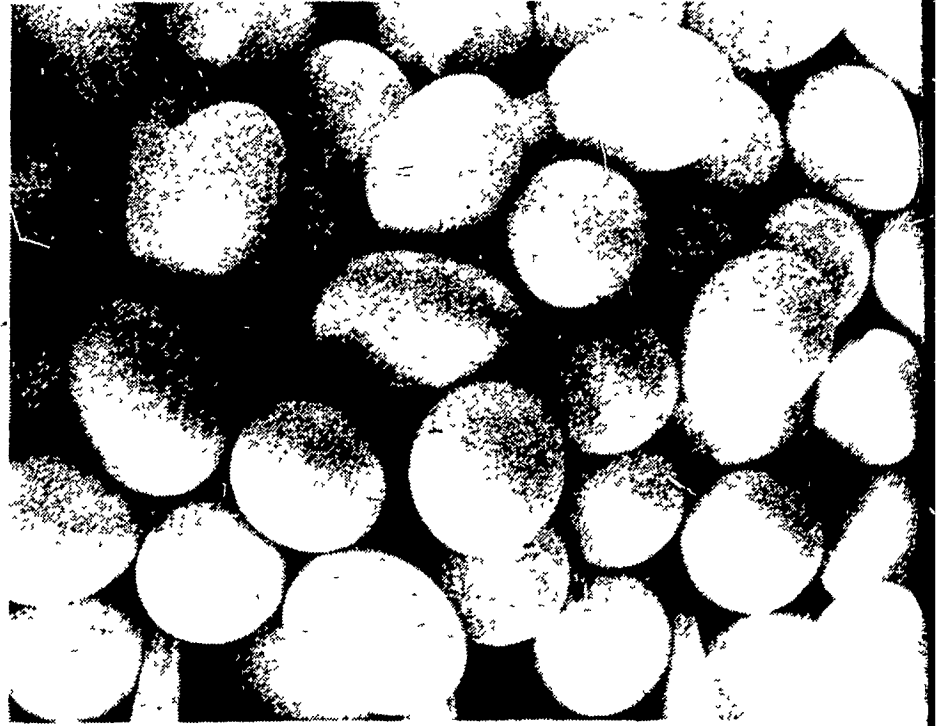
WEST CHESTER, Pa. - Fred Hughes, Penn State farm management specialist, will discuss: farm partnerships and corporations, farm transfers, and the buying and selling of farms, with special emphasis on how the new tax laws may affect future planning.

Farmers and their wives and people interested in farm estate planning are invited to attend. There will be ample opportunity for questions. The meeting, conducted by the Chester County Extension Service, will be held 7:30 p.m. Tuesday, January 18 at the Russellville Grange Hall, near the junction of Routes 896 and 10.

prestigious honor. It was the "crown" to a performance on the part of Lancaster County poultrymen who swept all events in egg competition. All the best eggs in the state came from the Garden Spot.

Eggs weren't all Lancaster County exhibitors excelled in. Just ask beef exhibitors. Nineteen-year-old James Greider of Columbia showed the grand champion - an Angus-Chianina cross - thereby bringing that honor back to Lancaster County for the first time since 1972. Later he sold his champ for \$8,256. An 11-year old girl from Refton, whose steer wasn't much appreciated in her neighborhood, had the reserve champion. She was Bonnie Sue Frey, a first-year 4-H'er, who came close to winning not only the grand championship but also a court decision in regards to raising a steer within a small village.

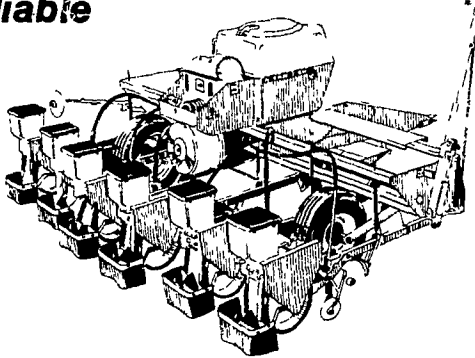
The grand champion market hog also came from



Perfect eggs were a first ever at last year's at last year's Farm Show.

## TRY A CLASSIFIED

Simple . . .  
accurate . . .  
reliable



## International 400 Cyclo Planter

This season, enjoy the benefits of International Cyclo planting, the world's first system to use air power for putting seeds in the ground. No other system equals it for reliability, convenience, simplicity. A variety of seeds, sized or unsized, are all planted through the same metering system. And owners report getting accurate populations at speeds up to 7 mph.

- Trailing models in 4, 6, 8 rows, wide and narrow
- Quick-change seed drums can be changed over in minutes, big centralized 11-bu hopper goes half a day without refilling
- Electronic monitors take guesswork out of planting
- Attachments available: fertilizer and chemical applicators, Cou-Till units, combined tillage hitch

WAIVER OF FINANCE  
TIL MARCH 1, 1977

## SWOPE & BASHORE, INC.

Frystown RD1  
Myerstown, PA 17067  
717-933-4138

## THERMA-STOR

### WHY ARE DAIRY OPERATIONS BUYING THERMA-STOR?

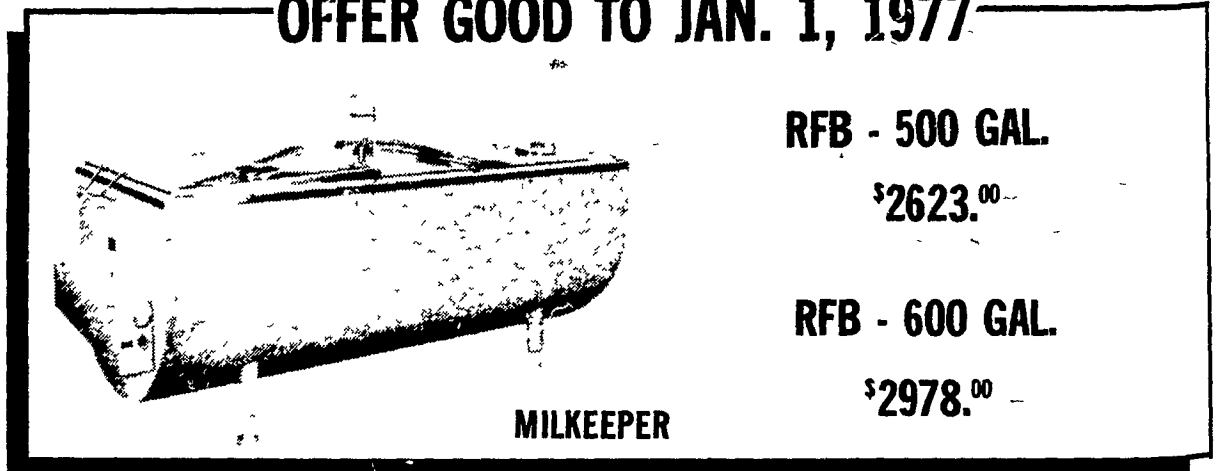
Because they get all the FREE hot water they need . . . plus they SAVE from \$2.00 to \$4.50 per day on electric kilowatt savings.

GET THE FULL DETAILS FROM US . . .  
All Information Is Free!

WE NOW HAVE AVAILABLE THE THERMA STOR FOR OUR DIESEL OPERATED CUSTOMERS.

ASK FOR APPOINTMENT TO SEE IT IN OPERATION.

OFFER GOOD TO JAN. 1, 1977



RFB - 500 GAL.

\$2623.00

RFB - 600 GAL.

\$2978.00

## USED MILK TANKS

- |   |   |   |
|---|---|---|
| New 18 Can Milk Coolers   | 1 - 600 Gal. Mojonnier with new 5 H.P. Lehigh belt driven compressor and tank washer. | 1 - 300 Gal. Jamesway                     |
| 1 - Used 18 Can Milk Cooler Built by Lloyd Martin. New Condition. | 1 - 500 Gal. Jamesway   | 1 - 300 Gal. Mueller Model M              |
| 1 - D2-1000 Gal. Girton w-compressor                              | 1 - 400 Gal. Jamesway   | 1 - 300 Gal. D2 Girton                    |
|   |   | 2 - 5 H.P. Lehigh belt driven compressors |

YOUR FULL SERVICE DEALER ANYWHERE ALL WORK GUARANTEED

## SHENK'S FARM SERVICE

Phone (717) 626-1151  
or after 5 - Titus Burkholder  
(717) 859-1620

501 E. Woods Drive, Lititz, PA. 17543

Answering Service (717) 733-1224