

Livestock market and auction news

Cattle

29, 1976
 00. Trading
 mostly
 Heifers
 00 lower.
 Choice Steers

STEERS:
 2-4 1075-
 1.00. Mostly
 41.00. Load
 Choice 3
 1800 lbs.

HEIFERS:
 Choice and
 250 lbs. 36.00.
 2-4 900-
 38.00. Load

ough Wed-
 ble receipts
 t week 7,255,
 At mid-week
 s and Heifers
 r than last

December 29, 1976
**WEEKLY CATTLE
 REVIEW**
 Receipts this week 4600:
 Week ago 4500: Year ago
 4700

Compared last weeks
 close, slaughter steers 75-
 1.00 Higher: Slaughter
 Heifers 1.00-1.50 higher. Both
 classes registered sharp
 price upturns Monday, but
 early gains were offset by
 declines Tuesday. Lower
 prices Tuesday were the
 result of sharply declining
 prices for Steer and Heifer
 Beef in the wholesale
 dressed trade. Cows 2.00-3.00
 higher, most upturn on
 Canner and Cutter. Bulls 1.00
 higher. Supply mainly
 Choice 2-4 1000-1175 lb.
 steers, about 25 per cent
 Heifers, near 15 per cent
 cows.

SLAUGHTER STEERS:

St. Louis Cattle

Mixed Choice and Prime 2-4
 1050-1175 lbs. 39.50-40.50, load
 41.00 on Monday; Choice 2-4
 950-1300 lbs. 38.00-40.50,
 mostly 38.00-39.50 on
 Tuesday: Mixed Good and
 Choice 2-4 900-1200 lbs. 37.00-
 39.50, mostly 37.00-38.00 after
 Monday: Good 2-3 900-1100
 lbs. 34.00-37.00, some to 38.00
 on Monday: Standard to
 Good 2-3 950-1400 lb.
 Holsteins 29.00-33.50, few
 Standard 27.00-29.00.

SLAUGHTER HEIFERS:
 Mixed Choice and Prime 2-4
 750-1025 lbs. on Monday
 38.50, Part load 39.00, 44 head
 39.50; on Tuesday 875-1000
 lbs. 37.00, small lot 37.50:
 Choice 2-4 800-1050 lbs. 36.00-
 38.00, mainly 36.00-37.00 on
 Tuesday: Mixed Good and
 Choice 2-3 700-975 lbs. late
 34.00-36.25, some to 37.25 on
 Monday: Good 2-3 29.00-
 35.00, largely 29.00-34.00 on
 Tuesday.

COWS: Utility and
 Commercial 2-4 22.00-25.50,
 closing 23.00-25.50, Utility 1-2
 26.00. Canner and Cutter 1-2
 20.00-25.00, mostly 22.00-25.00
 at midweek. Low dressing
 late 19.00-22.00.

BULLS: YG 1-2 1000-1600
 lbs. 26.00-29.00, Few YG 1
 1400-1800 lbs. 30.00.

Omaha Cattle

December 29, 1976
 Compared with the
 previous week's close:
 Slaughter Steers and Heifers
 closed largely 75-1.25 lower.
 Cows closed 1.00-2.00 higher,
 bulls steady to 1.00 higher.

The Fed cattle trade held
 together fairly well early but
 turned downward when the
 Carlot dressed trade broke
 sharply at midweek.
 Packers came into the week
 fairly well supplied with
 cattle, particularly in view of
 another shortened work
 week. Slaughter Steers made
 up around 45 per cent of the
 week total and Heifers 33 per
 cent. There was a fairly
 liberal percentage Choice
 but mixed Good and Choice
 and some loads yield grade
 3-5 Steers over 1300 lbs.
 represented. Cows made up
 near 15 per cent and feeders
 5 per cent of the total.

Receipts for 3 days 13,900
 plus an estimated 500 for
 Thursday feeder auction.

STEERS: Late trading
 included load and part load
 Choice with end prime
 mainly 3 1150 lbs. 39.75; at
 the week's high point
 Monday part load 40.75. At
 the close, Choice 2-4 1000-1300
 lbs. 38.50-39.50, some at 39.50
 with end of Prime. Load

No-till

meeting set

COLLEGE PARK, Md. -
 The winter season of
 educational meetings for
 agronomists, agribusiness-
 men and crop farmers will
 get under way in earnest
 immediately after the New
 Year, with a statewide
 conference and two big East
 Coast meetings on con-
 secutive days in the first
 week of January.

Attendance at the three
 events is expected to total
 1,900 persons.

First off is the 69th annual
 meeting of the Maryland
 Crop Improvement
 Association, set for Monday
 (Jan. 3) in the Grand
 Ballroom Lounge of the
 Student Union building on
 the University of Maryland
 campus at College Park.
 Some 150 certified seed
 producers and other in-
 terested persons are ex-
 pected.

On Tuesday (Jan. 4) the
 crop caravan will move 32
 miles to downtown
 Baltimore for the three-day,
 thirty-first annual meeting
 of the Northeastern Weed
 Science Society at the
 Baltimore Hilton hotel.

That conference is ex-
 pected to attract 400 weed
 science research workers,
 educators and industry
 representatives from 13
 Northeast states, Canada,
 and the District of Columbia.
 The event has been held
 annually at New York City in
 recent years, and it has
 never convened previously
 in Maryland.

Then, the peripatetic crops
 classroom picks up steam
 and moves 55 miles north-
 west to Gettysburg, Pa.,
 for the third annual Mid-
 Atlantic No-Tillage Con-
 vention on Friday (Jan. 7)
 at the Sheraton Motor Inn.

A crowd of nearly 950
 persons is expected to jam
 into all available space for
 this event. The meeting site
 is located two miles south of
 Gettysburg on U.S. highway
 15.

Choice and Prime 3-4 1300
 1325 lbs. 38.25, part load 4-5
 1488 lbs. 34.00. Mixed Good
 and Choice 2-3 950-1225 lbs.
 37.50-38.50. Good 2-3 33.50-
 38.00. Load Good and Choice
 2-3 1316 lb. Holsteins 34.50.
 Standard and Good 31.50-
 33.50.

Average of LS-214 detailed
 quotations for Choice 900-
 1100 lb. Steers this week
 39.50; Choice 1100-1300 lbs.
 39.25. Average weight Steers
 first two days this week 1131
 lbs. as compared 1138 lbs.
 previous week. Average
 weight Heifers first two days
 965 lbs. as compared 978 lbs.
 previous week.

HEIFERS: At the close,
 load Choice end Prime 3-4
 near 1000 lbs. 38.40, part load
 Monday 39.50. Choice 2-4 850-
 1025 lbs. closed 37.25-38.25.
 Mixed Good and Choice 2-3
 850-1000 lbs. 36.00-37.25. Good
 2-3 32.00-35.50. Few Standard
 and Good 31.00-32.00.

COWS: Utility and
 Commercial 2-4 23.00-24.50,
 Few 25.00-25.50. Canner and
 Cutter 19.00-23.00, Mixed
 Cutter and Low-Utility 23.00-
 24.00.

BULLS: 1-2 1400-1800 lbs.
 26.00-29.00, Some Yield
 Grade 1 30.00-31.00.

Lancaster Feeder Cattle

Friday Dec. 25, 1976

Feeder Cattle
 Today Holiday
 Last Friday 849
 No auction due to
 Christmas Holiday.



**HAY, STRAW & CORN
 -SALE-**

Every Friday at 1:00 P.M.

GREEN DRAGON MARKET & AUCTION

RD No. 3 Ephrata, Pa. 717-733-2334
 1 mile North of Ephrata on N. State St.



Martinsburg

Martinsburg, Pa.
 December 27, 1976

CATTLE 183. Compared
 with last Monday's market,
 slaughter steers steady to \$1
 lower. Slaughter cows \$1 to
 \$2.50 higher. Good slaughter
 steers 35.50-38.50, Standard
 30.00-34.00, Utility 26.00-
 30.00. Good slaughter heifers
 32.00-35.00, Standard 28.50-
 32.00, Utility 25.00-28.00.
 Utility & High Dressing
 Cutter slaughter cows 26.75-
 28.50, one at 29.00, Cutters
 24.50-27.00, Cannors 22.00-
 25.00, Shells down to 20.00.

Good slaughter bullocks
 32.50-36.00, Standard 28.50-
 31.00, Utility 26.50-29.00.
 Yield Grade No. 2 slaughter
 bulls 30.00-34.50.

CALVES 211. Vealers
 grading Good & Choice \$1 to
 \$2 lower, Standard & Good \$2
 to \$5 higher. Choice vealers
 60.00-65.00, Good 57.00-60.00,
 Standard & Good 110-130 lbs.
 40.00-47.50, 90-110 lbs. 32.00-
 38.00. Farm calves, holstein
 bulls 90-115 lbs. 35.00-40.00.

HOGS 349. Barrows & Gilts
 steady to 50 cents higher,
 spots \$1.50 higher. US No. 1-2
 200-240 lbs. barrows & gilts
 42.00-44.00, No. 1-3 200-250
 lbs. 41.00-42.50, No. 2-3 190-
 260 lbs. 40.00-41.00, No. 2-4
 240-260 lbs. 40.00-41.50, No. 1-
 3 140-190 lbs. 35.00-40.00. US
 No. 1-3 300-550 lbs. sows
 26.50-30.00, No. 2-3 300-600
 lbs. 24.50-26.50. Boars 17.50-
 20.00.

FEEDER PIGS 27. US No.
 1-3 20-35 lbs. feeder pigs 8.50-
 17.00 per head, No. 1-3 35-50
 lbs. 20.00-26.00 per head.

SHEEP 0. No sales on
 offer.

RAW AND EAR CORN SALE

Every Wednesday at 12 Noon
 Make your business in the past and hope to
 the coming year.

HARVEY Z. MARTIN

North Maple Ave., Leola, PA
 Home Phone 215-445-5303
 We Buy On Orders.
 Bus. Phone Wed. Only
 717-656-7270

Wide Good's Farm Equipment Sale
 Leola, PA

Also buy hay and straw privately.

POULTRYMEN

FOR A
BRIGHT IDEA

CALL
HALLER ELECTRIC, INC.

Route 2
 Denver, Pa. 17517

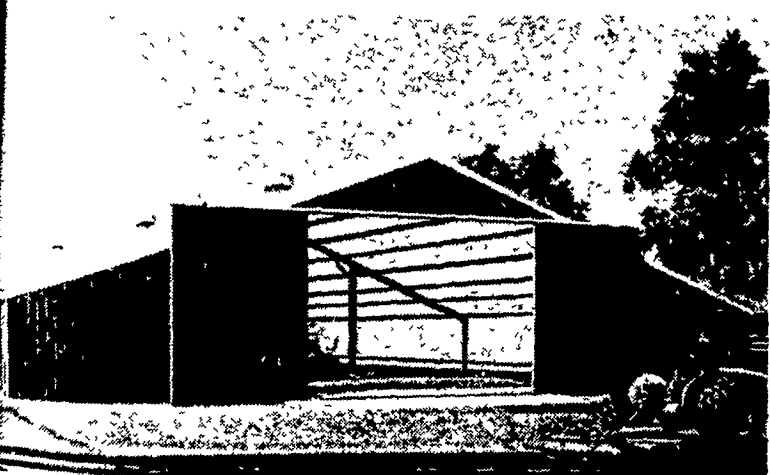
SPECIALIZING IN POULTRY
 DEVICES, ALSO GRAIN DRYERS

FOR ALL YOUR WIRING NEEDS.

CALL
215-267-7610

QUONSET

POL-BARN™



All new STEEL "pole barn"
 - economical, strong,
 versatile, attractive.

VERNON E. MYER

Steel Buildings
 And Grain Storage
 R.D. 4, Lebanon, PA 17042

Phone: (717) 867-4139

Leasing Available

Quonset Pol-Barn (with 18" wing units)



HAPPY NEW YEAR



BULL CALVES

For Sale At Farmers Prices
 From All Registered Herd.

We have bulls out of & cows bred to top sires
 including. Astronaut, Elevation, Arlinda Chief,
 Glendell, Gay, etc.

Contact
LARMAC FARMS

R6 Box 107
 Dover, Dela.

- Owner -
 A. James McCabe Jr.
 201-836-1590

- Mgr. -
 Daniel S. Mast
 302-734-5056