

Poultry Market Reports

Weekly New York Egg Market

	Mon.	Tues.	Wed.	Thurs.	Fri.
WHITE					
Ex. Large	84	79	79	76	H O I. I D A Y
Large	84	79	79	76	
Mediums	80	75	75	72	
Pullets	67	63	63	60	
Peeweves	47	43	43	40	
BROWN					
Large	84	84	84	84	
Mediums	Unquoted				
Pullets	Unquoted				
Peeweves	Unquoted				
Off Grade					
Large	75	71	71	68	
Checks	49	49	49	47	

Tone—Market irregular.
Copyright 1976 Urner Barry Publications

New England Weekly Shell Egg Report

Tuesday, December 28, 1976
No market report available at press time.

NEST RUN EGGS

Prices are from Egg Clearinghouse, Inc., (ECI) Durham, N.H. and reflect trading prices for gradeable nest run eggs (GNR) on ECI, a nationwide trading center for producers, packers and marketers. GNR eggs are classified by weight in 30-dozen cases, and traded in lots of either 300 or 750 cases. Prices are FOB buyers dock, and are computed Tuesday and Thursday of each week. This week's prices for each classification were:

Classification	New Weight Per Case	Tuesday	Thurs.
Extra Large	51 lbs.		64
Class 1 - Large	48 lbs.	68	63
Class 2 - Large	45 lbs.	66	61
Class 3 - Medium	42 lbs.	64	55
Class 4 - Small	39 lbs.	58	55
Breaking Stock	48 lbs.	56	49
Checks	48 lbs.	49	

Philadelphia Eggs

Wednesday, Dec. 29


Prices trended lower. Demand is no better than fair. Supplies adequate.

Grade A Extra Large 82½-88½; Large 81-87½; Mediums 76½-83.

New Holland Horse

New Holland Sales Stables
New Holland, Pa.
Monday, Dec. 27, 1976
Reported receipts of 122 head of horses, mules, and ponies. Market stronger than last weeks market.

Driving horses 175-675; riding horses 150-225; better riding horses 250-385; lightweight killers 19-22; heavyweight killers 27-29; mares 20-50; colts 5-20; geldings 20-45; and larger ponies 55-80.



Lancaster Farming

P.O. Box 266 - Lititz, PA 17543
Office: 22 E. Main St., Lititz, PA 17543
Record-Express Office Building
Phone: Lancaster 717-394-3047
or Lititz 717-626-1164

Robert G. Campbell, Publisher
Dieter Krieg, Editor
Joanne Spahr, Associate Editor
Judy Mitchell, Berks County Correspondent
Joyce Bupp, York County Correspondent

Subscription Price \$4 per year
Established November 4, 1955
Published every Saturday by Lancaster Farming
Lititz, PA
Second Class Postage paid at Lititz, PA 17543

For Address Change form or new subscription see Classified Section.

Members of Newspaper Farm Editors Assn, Pa Newspaper Publishers Association, and National Newspaper Association

Delmarva Poultry

Wednesday, Dec. 29
Ready to cook demand is moderately good, processors supplies are no more than adequate on dressed product. Live supplies adequate.

Current boiler-fryer negotiated prices for immediate includes mostly multiple-drop shipments to New York City from Delmarva.

Range US Grade A 35-36; Plant Grade 35; Premium X US Grade A 37-42; Premium X Plant Grade 36-40.

WTD Avg. US Grade A 35.86 Plant Grade 35; Premium X US Grade A 40.43; Premium X Plant Grade 39.53.

X - includes special services, selected competitive brands, etc.

Eastern Pa. & N.J. Poultry

Wednesday, Dec. 29
Flock offering ample. Demand is fair. Prices are slightly lower.

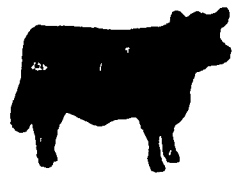
Prices paid at farm: Light type hens 11-13¼, mostly 12-13 in Pa. TFEWR in N.J.

Baltimore Eggs

Wednesday, Dec. 29
Prices unchanged to 5 cents lower. Demand good for mediums, fair on balance. Supplies adequate.

Cartoned eggs: prices to retailers, state graded (min. one case sale) white.

Grade A Large 83-91; Grade A Medium 79-87.



RED & WHITES

AN IDEA WHOSE TIME HAS COME!

- OPEN HERDBOOK
A grade-up plan for your herd
- USDA RECOGNITION
Breed code "W"
- MONTHLY PUBLICATION
12 issue subscription \$2.00
- CLASSIFICATION PROGRAM
- MAXIMUM SERVICE AT MINIMUM COST
Write Today for Free Information

RED & WHITE DAIRY CATTLE ASSOCIATION
Crystal Spring, PA. 15536

Hay Markets

Harvey Z. Martin

Wednesday, Dec. 23, 1976
87 Loads
Alfalfa 64 to 97;
Timothy 55 to 73; Clover, 3 loads 54, 71, 82; Mixed Hay 49 to 91; Stubble Hay 2 loads 45 and 57; Straw 46 to 82; Corn fodder 37 to 41; Ear Corn 59½ to 61; Peanut Hulls 44; Fire wood 44.00 per ton.

Green Dragon

December 24, 1976
PRICES PER TON:
32 loads hay & 6 loads straw.
Alfalfa, couple loads 79.00-80.00
Timothy, few loads 66.00-71.00
Mixed hay 70.00-85.00 some down to 55.00
Clover, one load 60.00
Stubble hay, one load 67.00
Straw, 6 loads 57.00-60.00
Corn Fodder, 5 loads 40.00-52.00

Regional Hay

Dec. 27, 1976
(All hay No. 2 and better, prices paid by dealers at the farm, price per ton.)
Hay & Straw steady.
Alfalfa 80.00-88.00
Mixed hay 65.00-75.00
Timothy hay 60.00-70.00
Straw 50.00-55.00
Mulch 25.00-35.00

New Holland

Wednesday, Dec. 29, 1976
68 Loads
Alfalfa 68 to 94; Clover 1 load 76; Timothy 55 to 73; Mixed Hay 53 to 93; Stubble Hay 1 load 69; Straw 51 to 66; Corn fodder 1 load 43; Corn 55 to 63½.



Joyous New Year

Celebrate the New Year with good friends and lots of cheer. We hope it'll be the best ever. To all our loyal customers, sincere thanks.

Know Where the Activities Will Be
Read the Farm Women Calendar



OUR GOAL IS GETTING TOP DOLLAR FOR YOU

SHIP TO THE
DANVILLE LIVESTOCK MARKET

Old Rt. 11 Danville, Pa.
Phone (717) 275-2880

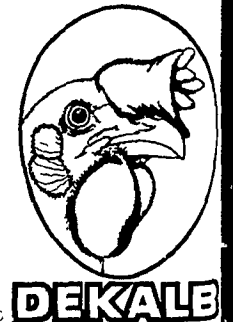
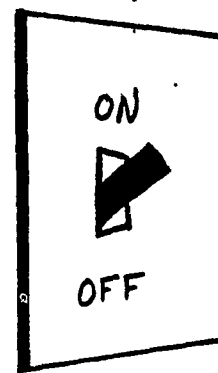
SALE EVERY MONDAY 2 P.M.

Horse Sale 2nd Sat. Every Month 10:30 A.M.

OWNER: MELVIN M. LEHMAN
717-275-2880 Bus.

WHAT ONE WORD REPRESENTS THESE THREE THINGS?

(Answer: a switch)



Do you realize that in the past year there has been a 40 per cent increase in DEKALB sales in this area? Many progressive area poultrymen are SWITCHING to DEKALB. As we enter this new year of 1977 do some evaluating of your last flock's performance.

IF YOU KEEP RECORDS YOU'LL KEEP DEKALB LAYERS

Moyer's CHICKS, INC.

Quakertown, PA 18951

(215) 536-3155