

Hog Markets

Lancaster Market

Barrows and gilts higher.
BARROWS AND GILTS:
 200-235 lb. 44.25-45.00,
 200-240 lb. 43.50-44.10,
 200-250 lb. 42.75-43.50,
 25-42.50

Lancaster Auction

HOGS: 500. Barrows and gilts 3-4.00 lower.
BARROWS AND GILTS:
 Few US 1 210-230 lb. 40.75. US 1-2 200-240 lb. 39.50-39.85. US 1-3 200-240 lb. 39.00-39.50. US 2-3 200-255 lb. 38.50-39.00.

Joyous New Year

GREEN DRAGON VESTOCK SALES

1 mile North of Ephrata, PA



COWS COWS COWS

BUYERS FROM 3 STATES

Regular consignments from Ray Kyper, Alfred Light, Bob Kennedy, Dale Brewer and Ed Ker plus local consigners.

of good Northern Feeders and Stockers.

SALE EVERY FRIDAY

Bulls, Steers, Slaughter Cows, Lambs and veal calves.

10:00 A.M. - Beef Sale Stockers & Feeders 200 to 250 each week.

8:30 P.M. - Dairy Cows

10:00 P.M. - Small Animal Sale

Special Sales and Herd Dispersals on the spot at our barn or other market information Office 717-733-2444.

Walter H. Risser, Proprietor

Indianapolis

Wednesday Dec. 29, 1976
INDIANAPOLIS HOGS:
 1500 - Receipts currently 800 below early estimate. Barrows & Gilts moderately active, steady to weak. US 1-2 200-230 lb. 41.00-41.25, 75 head 41.25, US 1-3 200-240 lb. 40.50-41.00

St. Louis

Wednesday, Dec. 29, 1976
ST. LOUIS HOGS: 6000 - Barrows & gilts active, steady to 50 higher, advance on weights over 250 lb. US 1-2 200-235 lb. 40.75-41.25, Large share 41.00, US 1-3 200-240 lb. 40.25-40.75

Peoria Auction

Wednesday, Dec. 29, 1976
PEORIA HOGS: 3000 - Receipts currently 400 under estimate. Barrows & gilts fairly active, opening mostly 50 lower. US 1-2 200-230 lb. 40.00-40.50, 59 head 40.75, US 1-3 200-240 lb. 39.50-40.00

Vintage

Wednesday, Dec. 19, 1976
 Total 865 head.
 No. 1 40.50-40.85; No. 2 39.50-40.35; No. 3 38.25-39.25; Heavy Hogs 250-300 37.50-40.00; Light Hogs 34.75-40.00; Sows 300-550 25.50-28.00 & Boars 19.00-22.00.



New Holland

Monday, Dec. 27, 1976
HOGS: 1548
 Retail: 44-45
 Heavyweight: 42-43
 Lightweight: 41-43
 Wholesale: 43-44
 Sows: 25-31
 Boars: 18.50-28.50
 Shoats: 630

No. 1 and 2 49-59 lbs. 55.00-60.00, 62-83 lbs. 48.00-60.00; No. 2 43-52 lbs. 53.50-64.00, 53-56 lbs. 60-66; No. 2 and 3 36-46 lbs. 61.00-63.00, 47-68 lbs. 51.00-63.00; No. 3 35-40 lbs. 51.00-61.00, 41-67 lbs. 41.00-62.00; Utility 28-53 lbs. 37.50-58.50.

New Holland Dairy

New Holland Sales Stables
 New Holland, Pa.
 Wednesday, Dec. 29, 1976
 Reported receipts of 114 cows, 10 heifers, and no bulls. Market steady with last week's market.

Two loads of Butler County fresh cows 525-685, springers 500-920; Load of Pennsylvania fresh cows 700-980, springers 650-775; Load of Pennsylvania fresh cows 600-840.

Locally consigned cows 450-840; springing heifers 450-550.

Valley Livestock

Valley Stockyards, Inc.
 Athens, Pa.
 Monday, Dec. 27, 1976
 Reported receipts of 58 calves, 187 cows, 87 hogs, 45 heifers, 14 bulls, 14 steers, and 6 sheep. Cattle market active; calf market higher. Veals 48-70; Bobs 25-40; grassers and feeders 20-33; lambs 33-38.50; sheep 8-14; hogs 18-41.50; pigs 12-27.50; heifers 24-33.50; steers 26-31.50; bulls 26-33; cows good, 26.50-27.50; top 30.50; Cows, med. 23.50-25.00; cows, poor or small 18.00-22.00; ponies to 25.00 and goats 12-25.



Futures Trading

Closing Bids as of Thursday, Dec. 30

	Chicago Cattle	Chicago Hogs	New York Maine Potatoes	New York Fresh Eggs
January-77				64.60
February	40.20	37.65		56.80
March			6.81	56.10
April	39.75	34.75	7.83	52.50
May			9.42	48.75
June	41.75	37.45		
July		38.30		
Aug.	42.60	36.90		
Sept.				
Oct.	43.45	34.80		

Trend—Cattle are lower, Hogs are lower, Potatoes are higher, and Eggs are lower.

Markets Provided by Commodity Department Reynolds Securities, Inc.

CHICAGO GRAIN FUTURES

(Closing bids as of Thursday, Dec. 30)

	Corn	Wheat	Soybeans	Soybean Meal
January-77			6.99½	202.90
March	2.79¾	2.56½	7.06½	207.00
May	2.85	2.62¾	7.03½	206.10
July	2.89	2.66¾	6.95½	204.30
Aug.			6.83	201.00
Sept.	2.95	2.64½	6.53	191.50
Oct.				180.50
Nov.			6.33½	
Dec.	2.04½	2.62½		

Trend—Corn is lower, Wheat is mixed Soybeans are lower, and Soybean Meal is lower.

Markets Provided by Commodity Department Reynolds Securities, Inc.

U.S. Inspected Livestock Slaughter

	Slaughter Under Federal Inspection First Three Days		
	CATTLE	HOGS	SHEEP
This Week	419,000	824,000	69,000
Last Week	411,000	840,000	70,000
Last Year	412,000	734,000	76,000

Know Where the Activities Will Be? Read the Farm Women Calendar.

J. M. HOOBER INC.

As you know there are no easy ways to farm and to raise livestock. You work hard with your hands & back & you try to use all the knowledge your parents taught you, then you trust in the Lord.

Our business has no short cuts or easy ways either. We just work hard to supply you with quality feeder cattle & stand ready to assist you when your livestock is ready for market.

NEXT FEEDER PIG SALE

JANUARY 4, 1977

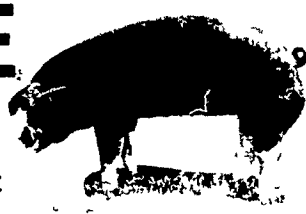
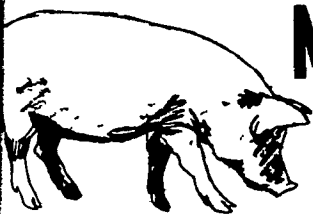
Please Call Us Soon
 PH: (717) 397-6191, 569-2084, 626-5659

ATTENTION CATTLE FEEDERS

Do you want to make buying your stockers and feeders easy. It can be very simple. Just call and give us your order. All orders filled to your exact specifications. Call us anytime. We can be very helpful.

NEXT FEEDER PIG SALE

TUESDAY, JAN. 4 - 1 P.M.



Consign all your feeder pigs to Walter M. Dunlap & Sons where they will be handled by a capable and experienced staff.

Feeder pigs received from 6 A.M. to 11 A.M.

WALTER M. DUNLAP & SONS

LANCASTER STOCK YARDS

Consignors can get state tags at our office, thereby saving 25c marketing expense

For Further Information, Call 717-397-5136