

Livestock market and auction news

Pa. Auction Summary

Harrisburg, Pa.
December 10, 1976

CATTLE 7243. Compared with 5709 head last week, and 7204 head a year ago. Compared with last week's market, slaughter steers mostly steady to \$1.50 lower. Slaughter heifers steady to weak. Slaughter cows mostly steady to \$2 lower. Slaughter bulls unevenly steady. **STEERS:** High Choice & Prime No. 3-4 42.00-44.00, Choice No. 2-4 39.00-43.00, Good 34.50-39.00, Standard 31.00-35.00, Utility 26.00-32.00. **HEIFERS:** Choice 36.00-40.00, few to 42.00, Good 32.00-36.00, Standard 28.00-32.00, few Utility 22.00-28.00. **COWS:** Utility & High Dressing Cutter 23.75-26.00, Cutters 21.50-24.25, Canners 18.00-22.00, Shells down to 15.00. **BULLOCKS:** Choice 36.00-39.50, Good 32.00-36.50, Standard 28.00-32.00, few Utility 24.00-28.00. **BULLS:** Yield Grade No. 1 1000-2200 lbs. 28.00-34.00, few to 38.00; yield grade No. 2 900-1500 lbs. 26.00-31.00. **FEEDER CATTLE:** Good & Choice 300-700 lbs. feeder steers 25.00-37.00, Medium 20.00-28.00; Good & Choice 300-700 lbs. feeder heifers 20.00-28.50, Medium 18.00-22.50; few Good & Choice 300-750 lbs. feeder bulls 24.00-33.75, few Medium 17.00-23.00. **CALVES 5312.** Compared with 4677 head last week, and 5313 head a year ago. Vealers unevenly steady. **VEALERS:** Few Prime 70.00-78.00, Choice 55.00-70.00, Good 43.00-55.00, Standard & Good 110-130 lbs. 35.00-46.00, 90-110 lbs. 27.00-36.00, Standard 70-90 lbs. 20.00-28.00, Utility 50-75 lbs. 15.00-25.00. Farm calves, holstein bulls 90-120 lbs. 30.00-49.50. **HOGS 7725.** Compared with 5397 head last week, and 8380 head a year ago. Barrows & Gilts strong to mostly \$1.50 higher. **BARROWS & GILTS:** US No. 1-2 200-240 lbs. 38.00-41.50, No. 1-3 200-250 lbs. 36.00-39.00, No. 2-3 190-260 lbs. 34.50-37.00, few No. 2-4 260-325 lbs. 32.00-36.00, No. 1-3 140-190 lbs. 30.00-35.00. **SOWS:** US No. 1-3 300-570 lbs. 26.00-29.00, few to 34.50, No. 2-3 300-600 lbs. 24.50-27.50. Boars 15.00-22.00, few light weights to 27.50. **FEEDER PIGS 2020.** Compared with 937 head last

week, and 1736 head a year ago. Feeder pigs uneven. US No. 1-3 20-35 lbs. feeder pigs 9.00-20.00 per head, No. 1-3 35-50 lbs. 19.00-29.00, No. 1-3 50-80 lbs. 28.50-37.00, Utility 20-25 lbs. 6.00-23.00 per head. **SHEEP 584.** Compared with 453 head last week, and 709 head a year ago. Woolled slaughter lambs mostly steady, spots 50 cents higher. Choice 70-110 lbs. woolled slaughter lambs 40.00-46.00, few to 51.00, Good 60-100 lbs. 33.00-40.00. Slaughter ewes 8.00-19.00.

Oklahoma

Oklahoma City
Dec. 16, 1976

Thursday Feeder Cattle Auction
Estimated Receipts 7,150 Same Day Last Week 9,038
Moderately active, Feeder Cattle and calves mostly steady with Feeder Steers 600-700 lb. additionally 50 cents to 1.00 lower; majority receipts Mixed Good and Choice 300-750 lb. Feeder Steers and 300-650 lb. Feeder Heifers including few cattle arriving from wheat pasture; moderate attendance buyers. **FEEDER STEERS:** Choice 300-500 lb. 37.00-40.75; 500-600 lb. 36.25-38.75; 600-700 lb. 34.75-36.25; 700-800 lb. 34.00-35.50; few 800-840 lb. 33.50-34.60; Mixed Good and Choice 400-600 lb. 35.00-37.00; 600-750 lb. 33.75-35.75; few 790-860 lb. 33.00-34.00; Good 440-600 lb. 33.00-35.00; 680-870 lb. 32.50-34.75, few Good 490-985 lb. 25.75-29.25. **FEEDER HEIFERS:** Choice 300-500 lb. 29.00-32.50; 500-700 lb. 29.50-32.50, part load 711 lb. at 30.30; Mixed Good and Choice 360-500 lb. 27.75-29.00; 500-790 lb. 27.75-29.50; Good 300-500 lb. 26.50-27.75; 500-750 lb. 24.25-28.00.

For the week: Compared to late last week, Feeder Steers over 600 lb. 50 cents to 1.00 lower; Feeder Steers under 600 lb., Feeder Heifers and Feeder Calves generally steady; Slaughter Cows 50 cents to 1.25 higher; bulls generally steady; salable receipts near 19,900 head compared to 21,185 last week and 15,353 head the same week a year ago. Cows and bulls near 12 percent of the cattle receipts, Feeders near 87 percent of the total.

Peoria Auction Midwest Carlot

Dec. 16, 1976

51 weekly cattle
Receipts this week 6900; last week 6900; last year 8300.
Compared with last weeks close, Slaughter Steers 1.00-1.75 lower. Slaughter Heifers 1.00-2.00 lower. Cows 1.50 higher. Bulls firm. Receipts about 65 per cent Slaughter Steers, 25 per cent Slaughter Heifers and the balance mostly cows. **SLAUGHTER STEERS:** Choice and Prime 3-4, 1150-1270 lbs. 39.00-41.50; late 39.00-40.00; Couple loads 1200-1230 lbs. 40.25-40.50. Choice 2-4, 950-1250 lbs. 38.50-41.00; at midweek 38.50-40.00. Mixed Good and Choice 2-4, 900-1300 lbs. 37.50-39.00. Good 2-3, 36.00-37.50. Standard and Good 2-3, 33.00-36.00. **SLAUGHTER HEIFERS:** Choice and Prime 3-4, 900-1050 lbs. 37.50-39.50; Closing 37.50-38.00; Load 39.00. Few YG 3-5, 36.00-37.00. Choice 2-4, 850-1050 lbs. 36.50-39.00; Late 36.50-37.50. Mixed Good and Choice 2-4, 800-1100 lbs. 36.00-37.00. Good 2-3, 34.00-36.00. Standard and Good 2-3, 31.00-34.00. **COWS:** Utility and Commercial 2-3, 21.50-23.00. High Dressing Utility 23.50-24.00. Cutter 1-2, 20.50-22.50. Canner 16.00-20.50. **BULLS:** YG 1-2, 1100-1800 lb. 25.00-29.00. Few YG 1, 1800-2160 lbs. 30.00-32.00.

Meat Trade

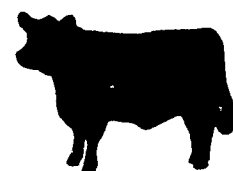
Compared to Tuesday's close: Trade slow. Demand very light for this week's delivery. Steer Beef 50-1.00 lower. Heifer beef 1.00-1.50 lower. Prime Beef cuts, Choice 3 Arm Chucks 2.00 lower. Cow Beef Canner & Cutter 1.00 higher. **STEER BEEF**
Choice 3 600-800 lbs. 61.00-61.50 50 lower; Choice 4 600-800 lbs. 56.50-57.00.
Good 3 600-800 lbs. 57.00 50-1.00 lower.
HEIFER BEEF
Choice 3 500-700 lbs. 58.75-59.75 1.00 lower; Choice 4 500-700 lbs. 55.75.
Good 3 500-700 lbs. 54.25-55.00 1.00-1.50 lower.
COW BEEF
Canner & Cutter 48.00-49.00 1.00 higher.
CHOICE 3 PRIMAL BEEF CUTS
Hinds (Steer) 145-190 lbs. 71.50; Hinds (Hfr) 120-170 lbs. 65.75-70.75.
Fores 130-210 lbs. 51.25-52.00.
Arm Chucks 75-120 lbs. 45.00 2.00 lower.
Ribs 24-40 lbs. 103.00.
Rounds (Steer) 70-95 lbs. 74.00; Rounds (Hfr) 60-85 lbs. 74.00.
Beef trimmings 50 percent chem lean fresh 25.00-25.50.

Baltimore USDA

U.S. Dept. of Agriculture
December 13, 1976

CATTLE 600: Moderate, slaughter steers & heifers firm, cows \$.25-1.00 higher, bulls market not tested, few feeders steady. Supply 35 per cent slaughter steers & heifers, 50 per cent cows, 15 per cent feeder cattle. **SLAUGHTER STEERS:** Choice 2-4 995-1300 lbs. 39.10-40.90; Good & Choice 2-4 950-1150 lbs. 38.00-39.00; Good 2-3 1000-1175 lbs. 33.75-38.00. **SLAUGHTER HEIFERS:** Choice 2-4 850-1050 lbs. 35.00-37.00; few Good 2-3 850-1000 lbs. 32.00-34.50. **COWS:** Utility 2-3 23.00-26.60; Cutter 20.50-24.10; Canner & low Cutter 18.00-20.50. **BULLS:** Several YG 1 1065-1690 lbs. 26.60-28.85. **FEEDER CATTLE:** package Good & Choice steers 850 lbs. 34.50; several Choice bull calves 395-512

lbs. 30.50-32.25; package Good heifers 522 lbs. 22.00. **HOGS 600:** Barrows Gilts 50-1.00 higher US 1, 200-230 lbs. 39.50-40.00 SOWS Steady, US 2-3 230-250 lbs. 38.50-39.50 US 1-3 300-600 lbs. 26.00-26.50 US 2-4 250-280 lbs. 37.00-38.50. **VEAL & CALF AUCTION 100:** few Choice Vealers 175-250 lbs. 54.00-64.00; Good 120-240 lbs. 38.00-48.50; Standard 80-145 lbs. 23.00-35.00; Good calves 27-385 lbs. 29.00-36.00; Standard 23.00-27.50. **SHEEP AUCTION 25:** Choice woolled slaughter lambs 98-105 lbs. 42.10-42.25; high Good & Choice 70-72 lbs. 35.25-38.00.



POULTRYMEN

FOR A

BRIGHT IDEA

CALL

HALLER ELECTRIC, INC.

Route 2

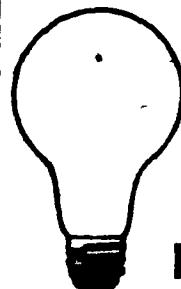
Denver, Pa. 17517

SPECIALIZING IN POULTRY HOUSES, ALSO GRAIN DRYERS

SEE JOHN FOR ALL YOUR WIRING NEEDS.

CALL

215-267-7610



HAY, STRAW & CORN

—SALE—

Every Friday at 1:00 P.M.

GREEN DRAGON MARKET & AUCTION

RD No. 3 Ephrata, Pa. 717-733-2334
1 mile North of Ephrata on N. State St.

NEW HOLLAND SALES STABLES INC.

12 miles east of Lancaster on Route 23, New Holland, PA.

WEEKLY FEEDER PIG SALE EVERY WEDNESDAY

Sale To Start Promptly At 1 P.M.

WE WILL RECEIVE YOUR PIGS ANYTIME FROM 7 A.M. WED. MORNING

State Graded Until 12 Noon. All pigs inspected by State Approved Veterinarian.

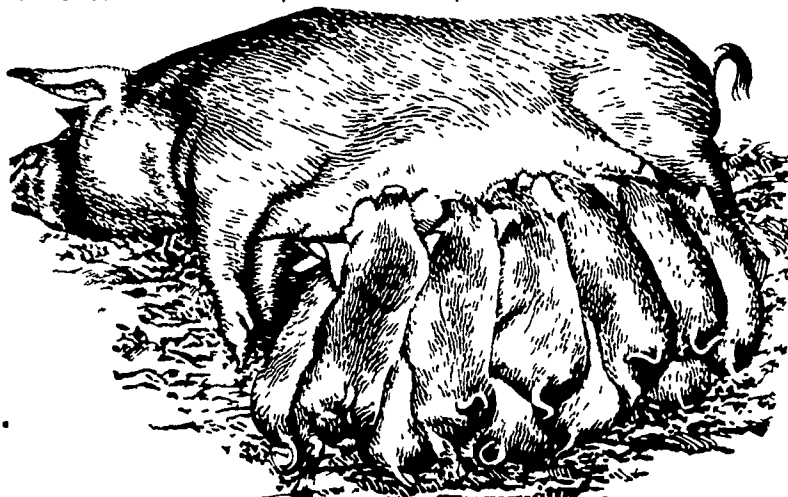
State tags available at our office for you to tag pigs at home to save 25¢ tagging charge.

Tags delivered if you call 717-354-4341 our office in advance.

CALF SALE TO BE HELD IN NEW SALES PAVILION EVERY THURSDAY AT 6:30 P.M.

NORMAN KOLB
717-397-5538

ABE DIFFENBACH
717-393-4464



BEEFALO HYBRID CATTLE

45 LIMOUSIN-HEREFORD CROSS COWS & BRED BEEFALO'S FOR SALE.

- Rapid gains on grass and roughage
- 55-65 lb. Births - up to 1100 lb. yearling
- Test data show 62 percent carcass, dress out
- We stock and distribute Pureblood Beefalo Semen and Half-Blood Beefalo heifers and bulls.
- Visit our farm and see our animals.

SEMEN \$12 an ampule

NOW TAKING ORDERS FOR ¼ BULLS & HEIFERS

BEEFALO N & J

4270 Quakerbridge Road
Princeton, NJ 08540
609-896-0336

Member World Beefalo Association