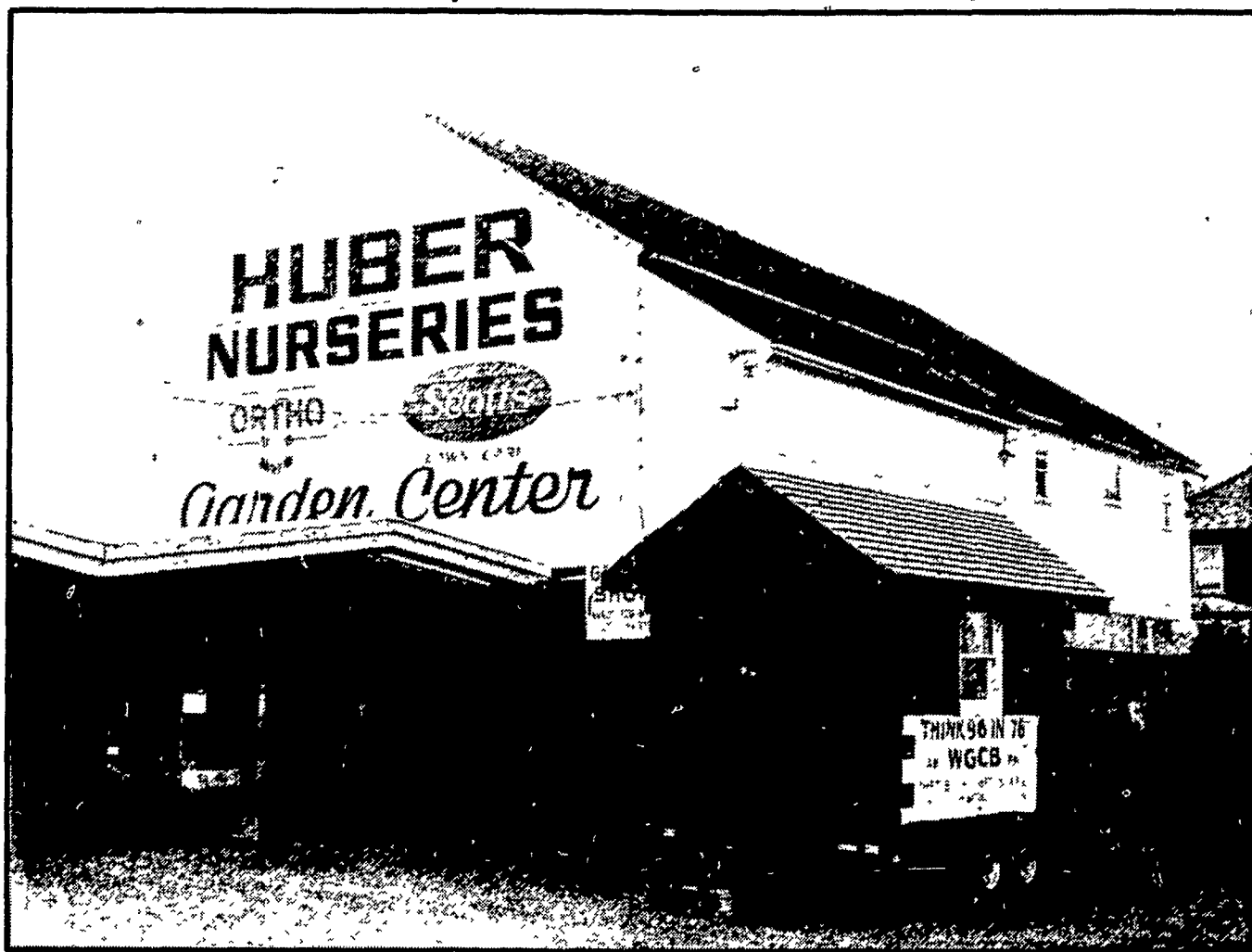


THIS WAS A RECENT SCENE AT A REMOTE BROADCAST PRESENTED BY "THE OLE SHERIFF" BOBBY MONTGOMERY FROM HIS LITTLE LOG CABIN AT HUBER'S NURSERIES, 2050 FRUITVILLE PIKE, LANCASTER, PA



IF YOU ARE PLANNING A GRAND OPENING — OPEN HOUSE — MANURE SPREADIN' WHY NOT HAVE "THE OLE SHERIFF" DO A REMOTE FROM YOUR PLACE OF BUSINESS?

TUNE IN 96 F-M WGCN RADIO

**MONDAY thru FRIDAY - 3 P.M. to 6:15 P.M.
SATURDAY 1 P.M. to 4 P.M. -
Live from the Little Yellow Shack at Cripple Creek**

SATURDAY NIGHT - Live Broadcast from 8 to 9 P.M. from the stage at "The Sight and Sound Theatre" on Route 896 across the creek from Cripple Creek, where all the Shindigs will be held this winter from January 1st thru April 30th, 1977

FOR ANY COMMERCIAL ADVERTISING SPOTS ON "THE OLE SHERIFF'S SHOW" OR TO HAVE THE SHERIFF DO A REMOTE FROM YOUR PLACE OF BUSINESS CONTACT:

J. Harold Burkhart, 434 Strasburg Pike, Lancaster, Pa. Phone: (717) 687-6010

WHILE ATTENDING THE PA FARM SHOW JAN. 10-13 VISIT THE OLE SHERIFF, BROADCASTING LIVE FROM THE CAB OF A TRACTOR SPONSORED BY C. B. HOOBER & SON, INTERCOURSE, PA.

**"THE OLE SHERIFF" > BOBBY MONTGOMERY
P. O. BOX 9696 STRASBURG, PA 17579
AREA CODE (717) 687-6169**

WE WISH YOU ALL A VERY MERRY CHRISTMAS