

Hay seeds scarce

[Continued from Page 1]

was red clover, a crop which has lost some ground in recent years, but is still the most widely grown legume in the state. He noted that at one time red clover was planted on some 3 million acres in Pennsylvania, whereas today it is only about a third of that amount. Still, that's roughly about 175,000 acres ahead of alfalfa.

Lancaster County seed dealers confirm Baylor's statement on the potentials of a seed shortage, especially certified varieties. Alfalfa seeds, it was explained, come primarily from California and the Pacific Northwest, where a combination of weather patterns and lack of bee activity played havoc with production. An excellent crop had been expected prior to that Baylor said too that 1976 had looked like a year where some real breakthroughs in seed varieties might become available to farmers, but the shortage is likely to postpone that.

France, normally a big exporter of alfalfa seeds, was hit by a severe drought this Summer, as was much of the rest of Europe. Consequently, France and other European nations are importing seeds this year, thus putting a further strain on already tight U.S. supplies.

Alfalfa seed is expected to cost anywhere from \$1.70 to \$2.60 per pound at the better known seed houses in the area. "But if a farmer is selling over the fence to his neighbor, the prices wouldn't be near that," said one spokesman. Neither are those seeds likely to be certified and treated.

The crunch on red clover is not expected to be as serious as what it may be with alfalfa, although prices will be up noticeably as Baylor predicted. Farmers might expect to pay a minimum of \$1.10 per pound at the seed house. One man's observation was that there will probably be as much red clover seed available as what was planted last year.

The only good news in regards to seeds comes for corn and short-season soybeans. Both are said to be in good supply and coming

from good crops. Nevertheless, farmers can expect an average six per cent price increase. "This does not reflect any shortage, however," said one dealer.

According to Baylor, red clover yields can be increased significantly if and when the newly developed seed varieties become broadly available. In more than a few instances, red clover production on Penn State research plots has been doubled. Under good management, stands could be kept for three to four years, Baylor said. If stands are kept for a couple years, Baylor predicts that red clover will have greater impact on forage production in the Commonwealth. While the legume is now playing second fiddle to alfalfa, it has the potential to rival that crop in years to come.

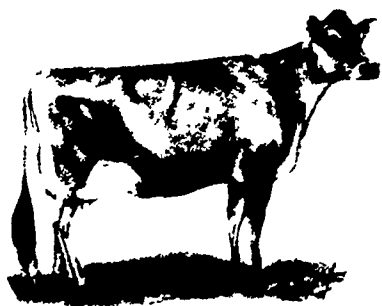
New seed varieties are forthcoming. "In fact, fellows, we have 'em now," Baylor stated. The varieties showing the most promise are Kenstar, Redland, Florie, Florex, and Arlington. The latter is not expected to become available, but it has real potential to produce, the Penn State pointed out. Redman is thought to be the best of all of the above, but won't be widely distributed either due to it being a privately developed variety.

Picking up a piece of chalk and using the blackboard to illustrate how new red clover varieties compare with the old standard - Pennscott, Baylor revealed these figures:

Rating Pennscott at a production level of 100, Redman compares with a rating of 167, Florie 162, Redland 137, and Kenstar 130. All yield readings were taken in the first year of establishment.

The simple reason for the improved red clover varieties is that they are more disease resistant than any of those previously on the market. We have some real opportunities, although we must wait on availability," Baylor concluded.

TRY A CLASSIFIED



*A Happy and Blessed Christmas
and a
Prosperous New Year
to our
Friends in the Dairy Industry
from the
PENNSYLVANIA JERSEY CATTLE CLUB*

If Jerseys figure in your 1977 plans, write for a Pennsylvania Jersey Breeders Directory to Dreisbachs' Long Meadows Farm, R D No 1, Hamburg, Pa 19526



The Board of Directors of the Lancaster County Poultry Association met recently at the Farm and Home Center for their monthly meeting. The members are (front - left to right) Walter Shaub, Stevens, secretary; Harold S. Musselman, New Holland, vice president; Ed Moshier, Lititz, president; Ronald Meck, Denver, treasurer;

Martin K. Pflieger, Manheim. (Back - left to right) John D. Hoffman, Pa. Poultry Federation, advisor; Jay W. Irwin, Lancaster County Extension agent, advisor; Stanley Musselman, Quarryville; John W. Melhorn, Mt. Joy; Ralph Seaman, Lititz; James D. Hess, Lititz; John R. Huber, Jr., Lititz; Melvin Shumaker, New Holland, Victor Weaver, Inc.

Laboratory licensed for bovine leukemia

NEW YORK, N.Y. - The U.S. Department of Agriculture has licensed the first veterinary biological testing kit for diagnosis of bovine leukemia.

Bovine leukemia is a malignant disease of cattle, which - although clinical signs are rarely observed in the United States - may infect up to 90 per cent of the animals in a herd. Clinical symptoms include enlarged lymph nodes, lymphoid tumors, loss of condition, lowered milk production, paralysis, infertility and

gastrointestinal disturbances.

USDA's Animal and Plant

Health Inspection Service (APHIS) has issued a license to Pittman-Moore, Inc., of

Virginville Grange

VIRGINVILLE, Pa. - The Virginville Grange received a new member, Lousie Greenawolt, at their latest monthly meeting. It was announced during the business segment that permission was granted from the fire company to the Grange for the use of the ball diamond this summer. The entertainment for the

meeting was presented by Marion Grange.

Some upcoming dates are: December 8 - Junior Grange members will go caroling; December 15 - Christmas party at 7:30 of Virginville Grange with Santa as guest. Bring a dessert.

The New Year committee is comprised of Mr. and Mrs. Harvey Smith and Mr. and Mrs. Paul Balthaser.

Washington Crossing, N.J., for manufacture and distribution of the biological products needed to perform the bovine leukemia glycoprotein immunodiffusion (BL-GLD) test.

Animal health officials say the BL-GLD test can rapidly and accurately test for virus antibodies associated with bovine leukemia. Through the test, livestock exporters may be able to develop BL-free herds and thereby more easily meet the import requirements of certain foreign nations. The test will also permit more intensive study of bovine leukemia and its economic importance.

ORGANIC PRODUCTS FOR SWAMPS AND CLAY

A new stabilized enzyme spray drains swampy land quickly and makes hard or clay soil more loose and spongy, both top and subsoil. That's why swamps drain. Eliminates subsoiling later. Amazing but well proven. Also fights fungus and blight. Increased California lettuce 30 per cent. Ask for literature and low initial experimental price before big increase on January 1.

Also a natural mined mineral, M42G, supplies missing elements for health in soil and livestock. Chickens didn't need debeaking, hogs stop rooting and killing, farrow and nurse better and easier; cow troubles decrease; hatchability, breeding, production and butterfat improves on considerably less feed. Improves soil structure. Takes less fertilizer for a high yield. Free literature and testimonials. Dealers wanted in other counties and states.

Also other organic fertilizer, soil conditioner, natural insecticides, natural livestock dewormers.

Organic vegetables wanted grown in quantity. Have large markets. Buy our products to produce quality so the market accepts your produce. Also so we can afford to warehouse your produce for less.

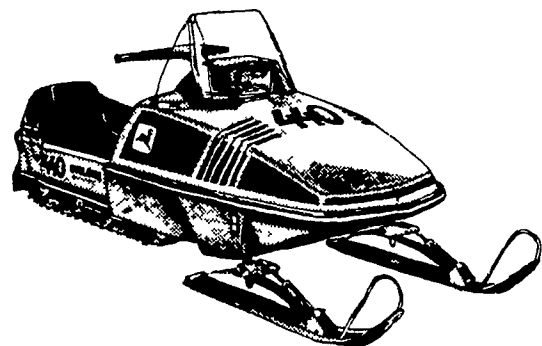
ELI STOLTZFUS

69 Strasburg Pine
Lancaster, Pa. 17602
Phone 717-394-9917

WAREHOUSE ORGANIC CENTER

381A East Jackson Street
New Holland, Pa. 17559

It's truer than ever this year.
OUT ON THE SNOW
NOTHING RUNS
LIKE A DEERE



Cyclone™

Cross-country endurance, superb handling, and stability That's the payload the John Deere race-inspired Cyclone delivers Fan-cooled reed-valve engine, 340 or 440cc, set low over the skis for easy handling Wide 32-inch ski stance and 72-inch "wheelbase" provide stability on hills and switchbacks CD ignition with surface-gap plugs Disk brakes Adjustable slide-rail suspension Rear lift handle Green with black accent panels

A. B. C. GROFF, INC. LANDIS BROS. INC.

New Holland 717-354-4191 Lancaster, PA 717-393-3906

ADAMSTOWN EQUIPMENT INC.

Mohnton, RD2, PA 19540
[near Adamstown]
Phone [215] 484-4391