

Regulations found depressing

GETTYSBURG - The farm leader said that Government over-regulation was topic of concern for state delegates throughout the recently held PFA convention, here. York County president Roger Perry states, "Farmers are not able to just stay at home and farm. Too many things outside the realm of farming affect the ways and means by which the farmers produce food and fiber for the non-farm consumer."

Government over-regulation seems to be surfacing in the policy development sessions is government regulations. "One of the suggestions is putting the U.S. Congress and Pennsylvania General Assembly back in control of agency regulations," he remarked. "Too often laws are passed by a legislative body and forgotten while some government agencies

outline the rules for administering the law.

"These rules are called regulations and seem to go way beyond the intentions of the lawmakers who passed the law in the first place. We want legislative control over the regulation process."

Perry explained that increased interference with steadily mounting regulation compliance in agriculture carries a price tag too high for farmers to bear. Many are just getting out to avoid hassles. Soon it will be the food and fiber shopper who bears the costly brunt of over-regulation in end markets.

The York County Farmers' Agri-Journal edited and published by Gail McPherson won best

publication award in the state, while the scrapbook compiled by Joyce Bupp depicting the association in the news won blue ribbon recognition.

"All we want is to produce food and make a decent living at it," concluded the York County dairyman. "Although grocery store prices don't always show it, prices on the farm drop drastically at times with no regard for the prices of production that steadily have been rising. Government regulations, although well-intentioned, are adding greatly to the cost of staying in business. And without profit, farmers can't hang in there for ever. That same is of all business."

Upward trend continues

HARRISBURG - Pennsylvania poultry production continued its upward trend during the week ending November 20, above last year's production and ahead of the 1976 national production, according to the Pennsylvania crop Reporting Service.

Placements of broiler chicks were 1,750,000. The placements were 27 per cent above the corresponding week a year earlier and six per cent above the previous week.

Average placements during the past ten weeks were 24 per cent above a year ago.

Placements in the 21 key poultry states were 62,693,000, five per cent above the previous week and five per cent more than the same week in 1975.

Average placements in the 21 key states during the past

ten week were seven per cent above a year earlier.

Milk prices announced

SOUTHAMPTON, Pa. - Area dairy farmers who are members of Inter-State Milk Producers' Cooperative received \$10.49 per hundredweight for milk they produced during October.

This price, known as the weighted average price, is the actual average price all Federal Order 4 dairymen receive for milk containing 3.5 per cent butterfat, and is adjusted accordingly for higher or lower butterfat content.

The October weighted average blend price is equivalent to 22.6 cents per quart. The October price compares to \$10.36 per hundredweight for the previous month and \$9.96 per hundredweight for a year ago. Quart equivalent prices were 22.3 cents for the previous month and 21.4 cents for a year ago.

The farm base milk price for October was \$10.76 per hundredweight while the excess price was \$8.35 per hundredweight. The butterfat differential was 10.4 cents for each point above or below 3.5 per cent. The base price is up eight cents per hundredweight from the previous month and up 65 cents per hundredweight from a year ago. The excess price is down 20 cents per hundredweight from the previous month and up 65 cents per hundredweight from a year ago.

A total of 453 million pounds of Federal Order 4 producer milk was pooled in October of which 62 per cent was sold as Class I, compared to 62 per cent for the previous month and 72 per cent a year ago. A total of 7,967 Order No. 4 producers provided 14.6 million pounds per day to dealers during October averaging 1,834 pounds per farm per day. Total value of producer milk was set at \$47.3 million for the month.

We Specialize In

- Aerial Ladder Barn Painting
- Sandblasting & Repointing
- Specialists In High Work
- Church Steeples Restored



- Painting & Roofing
- Complete Exterior Renovation

F. R. BEHM & SONS, CONTRACTORS
P.O. Box 652 - Lititz, PA
Phone (717) 626-8528

I would like a FREE ESTIMATE
 I would like FREE INFORMATION

NAME _____
ADDRESS _____
CITY _____ STATE _____ ZIP _____
PHONE _____

DIRECTIONS OF YOUR FARM OR CHURCH LOCATION:



White announces five timely ways to save thousands of dollars on your next machinery purchase.

Pre-Season Allowance
Make your best deal with your local White® dealer on a new White tractor, tractor tillage tool combination, planter or combine ... and we'll send directly to you a check for \$200 to \$1,850.

White Bucks
When you buy a new 4-wheel-drive 4-150 or 4-180 Field Boss™ ... White will allow you up to \$3,000 toward the purchase price of a job-matched tillage tool or planter to go with it.

Waiver of Finance Charges
Buy now and White will waive finance charges until March 31, 1977, on all new White tractors, tillage equipment purchased with tractors and planters. Financing charges on combines will be waived until the first season of use.

Investment Credit
On equipment purchased and delivered to you prior to January 1, 1977, the IRS-sponsored investment tax credit program allows

you to deduct up to 40% of the purchase price from your net income tax.

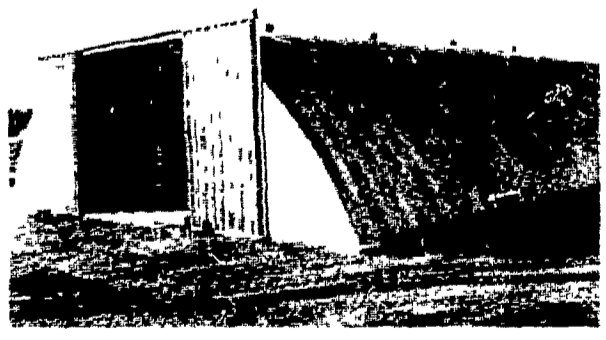
1st Year Bonus Depreciation
An additional 20% of the purchase price of equipment purchased and delivered before January 1, 1977 can be deducted from your 1976 taxable income under the IRS-sponsored 1st year bonus depreciation plan.

Save up to \$7,000
Here's a golden opportunity to save thousands of dollars. If you were to take advantage of White's exclusive Pre-Season Allowance, White Bucks (both expire December 30, 1976) as well as our Waiver of Finance Charges and the IRS-sponsored Investment Tax Credit and 1st Year Bonus Depreciation plans ... you could save up to \$7,000 on your next major machinery purchase. See us for the full details. We can work out a special deal for you now ... before December 30, 1976.

 **White Farm Equipment Company**
Product must be delivered prior to December 30, 1976 to qualify for Pre Season Allowance and White Bucks programs. Product delivery prior to December 31, 1976 subject to available inventory.

FARMERSVILLE EQUIPMENT
INC.
RD2, Ephrata, PA 717-354-4271
Store Hours Mon. Thru Fri. 7:30 to 5:30 -
Sat. 7:30 To 3:00

Introductory Sale Continental Farm Building 40 x 60



**30 ARCHES, 1 ENDWALL WITH
A 24 x 14 ALUMINUM SLIDE DOOR,
1 SOLID ENDWALL
\$4750.⁰⁰
GUTSHALL'S SILO REPAIR**

RD1 Womelsdorf, PA
Frystown, 717-933-4616