

# Beef industry future 'very bright'

**By DIETER KRIEG**  
**HARRISBURG** - The beef industry has a "very, very bright future," according to John Chohlis, manager of cattle chows for the Ralston-Purina Company of St. Louis, Mo. Chohlis has been involved in the industry for several decades and made the remark at the annual meeting of the Pennsylvania Livestock Association, held here last month.

Demand for beef and consumption of it will continue to grow if the farming industry remains in a profit-orientated economy. Chohlis unhesitatingly praises the virtues of free enterprise and profit and considers these aspects of American business to be vital to our existence as a free and prosperous nation. (See page 10 of the November 13 issue of Lancaster Farming).

With per capita beef consumption figures heading for a new all-time high this year (127 pounds per person) Chohlis described 1976 as a great year for the consumer, but a lousy one for cattlemen. "The vast majority will lose money in 1976," he exclaimed to the dinner meeting at the Host Motor Inn.

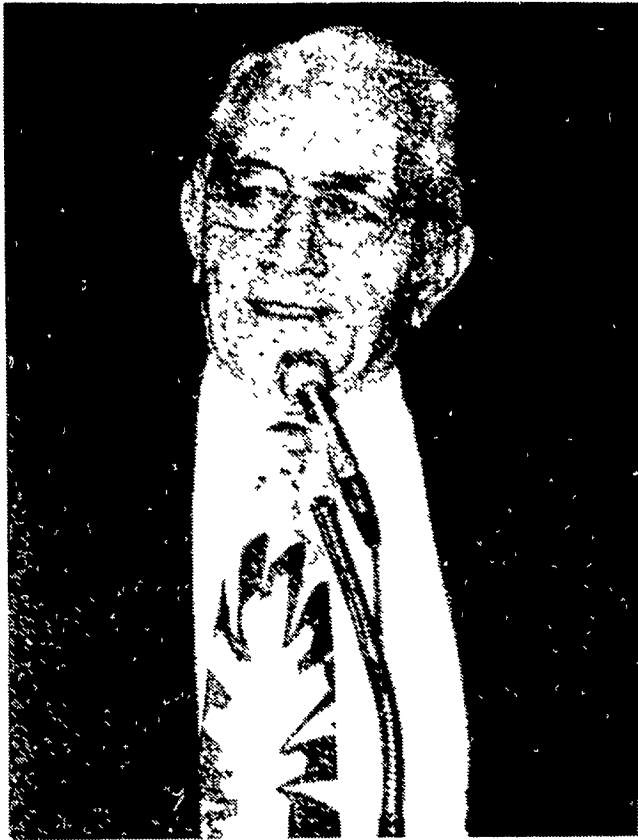
The feed company executive predicts further vertical integration within the beef business. "It will gather momentum," Chohlis said, "as the producer

discovers that the only way to get bigger profits is to go into butchering and retailing himself."

Symbiotic integration is also a happening being discussed by industry leaders. This business venture directs businesses to branch out in directions which are fairly closely related to their main enterprise. An example would be Ralston-Purina - a feeds manufacturer - going into either the grain raising or cattle feeding businesses. Chohlis claims this does not always turn out as profitable as what it may look at first and is therefore convinced that vertical integration is the stronger and dominant business trend.

According to Chohlis, vertical integration is happening faster in the beef industry than in other areas because of the turmoil beef producers have experienced during the last few years.

Not referring specifically to prices, Chohlis announced "You ain't see nothing yet if you think a lot of changes have taken place in the beef business during the last few years." He predicts many more upheavals and bases this conclusion on what he has seen and heard at packer conventions. Some significant changes in the methods of processing,



John Chohlis believes in America's cattle industry, free enterprise, and freedom.

packing, marketing and handling are on the way.

"And let's not forget the hamburger generation," Chohlis added. Of the 127 pounds of beef consumed this year by the average American, 45 were in the form of patties produced at such establishments as

McDonald's, Burger King, Hardee's and Gino's.

(Continued on Page 52)

Know Where the Activities Will Be?  
 Read the Farm Women Calendar.

### Christmas Specials

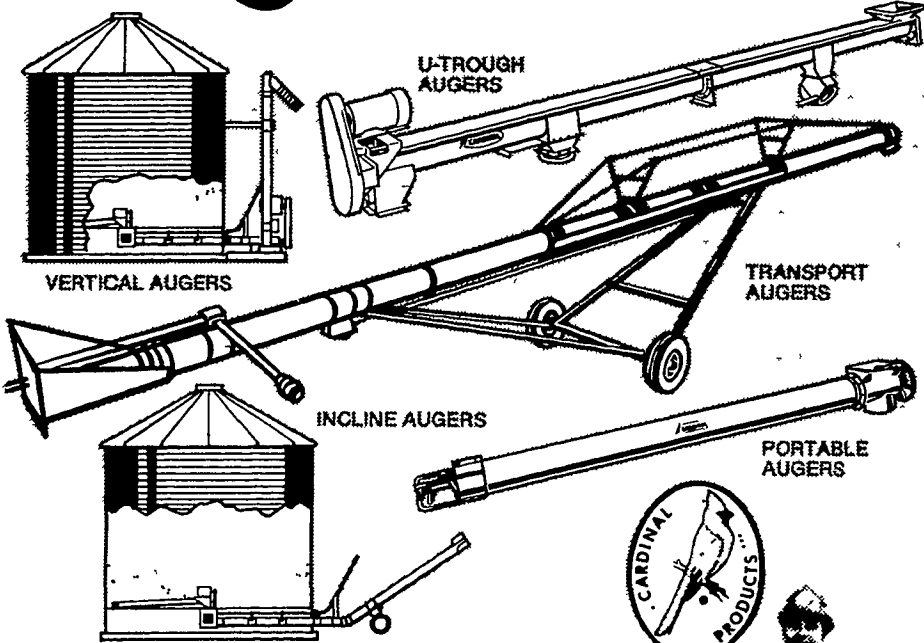
Mec 600 Jr. <b>SHOTSHELL RELOADERS</b>	<b>39.95</b>
RCBS Jr. <b>RIFLE PRESSES</b> Complete with Dies	<b>34.95</b>
Marlin Glenfield 22 Caliber <b>RIFLE</b> 7-Shot - with 4X Scope	<b>39.95</b>
Smith & Wesson <b>PUMP SHOTGUNS</b> 12 & 20 Gauge	<b>79.95</b>
Savage Model 311 <b>DOUBLE BARREL SHOT</b> Reg. 144.50	<b>Sale 109.95</b>
Large Selection of Black Powder Pistol and Rifle Kits, for the "Do It Yourself" Man!	
40% off 10-X leather & nylon face hunting pants	
10-X Orange Down <b>HUNTING COATS</b>	Reg 75.00 <b>Sale 49.95</b>
T-22 Winchester <b>AMMO</b>	Carton of 500 <b>7.95</b>
Dan Wesson <b>REVOLVERS</b> 357 Magnum 6" Barrel	<b>139.95</b>

Good Selection of Colt, Ruger, Smith & Wesson hand guns in stock

### SHYDA'S GUN SHOP

1635 S. Lincoln Avenue  
 Lebanon, Pa. 17042  
 717-273-6572  
 Open Mon. thru Fri. 9-9 Sat. 9-5

## The grain movers.



If it's Cardinal, it works. Why fool with piecemeal methods and makeshift machinery? The Cardinal line of grain movers includes the high-efficiency equipment you need for a hard-working, productive farm or commercial grain and feed handling installation.

Let us, your Cardinal Mechanization Contractor, help you plan, select and install a Cardinal grain-handling system.



Full Line Parts Dept.

EARLY ORDER DISCOUNTS AVAILABLE

**WE SELL, SERVICE AND INSTALL**  
**E. M. HERR EQUIPMENT, INC.**

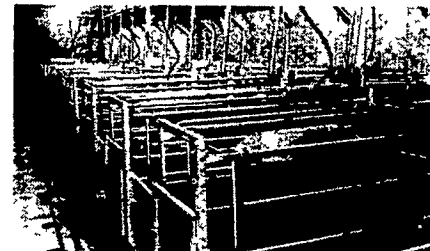
RD1, Willow Street, PA

Lancaster Co

717-464-3321

## NORTHCO HOG SYSTEMS

Properly managed Northco systems produce top quality hogs profitably with a minimum of labor. All components of a Northco confinement system are designed to deliver maximum returns on the investment you put into swine production.



### Farrowing

Northco Farrowing systems provide complete control over sow and litter. All crates are ruggedly constructed to deliver years of service. Special pig brooders target "zone heat" into the little pig area.

### Finishing

Feed delivery is automatic yet the amount for each pen can be regulated separately. Pen partitions are sturdy and designed to aid in cleanliness. Northco's ventilation system draws fresh air from sidewall intakes while exhausting warm humid air through roof exhaust ventilation units.



## INDIVIDUAL COMPONENTS

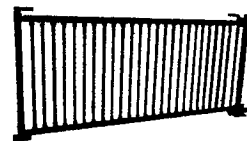
Superior design and engineering quality can be found in each Northco equipment component. Available separately.



Farrowing Crate



Brooder



Pipe Gate



Self Feeder



Roof Exhaust

**A. R. WOOD MFG. CO.**

Jim Thomas PH: (717) 656-2677

For more information complete this coupon and return to.

S J FARM SYSTEMS CO., 57 W. Main St., Leola, PA 17540

Name \_\_\_\_\_

Address \_\_\_\_\_

City \_\_\_\_\_ State \_\_\_\_\_ Zip \_\_\_\_\_

Phone \_\_\_\_\_

No. of sows or finishing interested in? \_\_\_\_\_

H