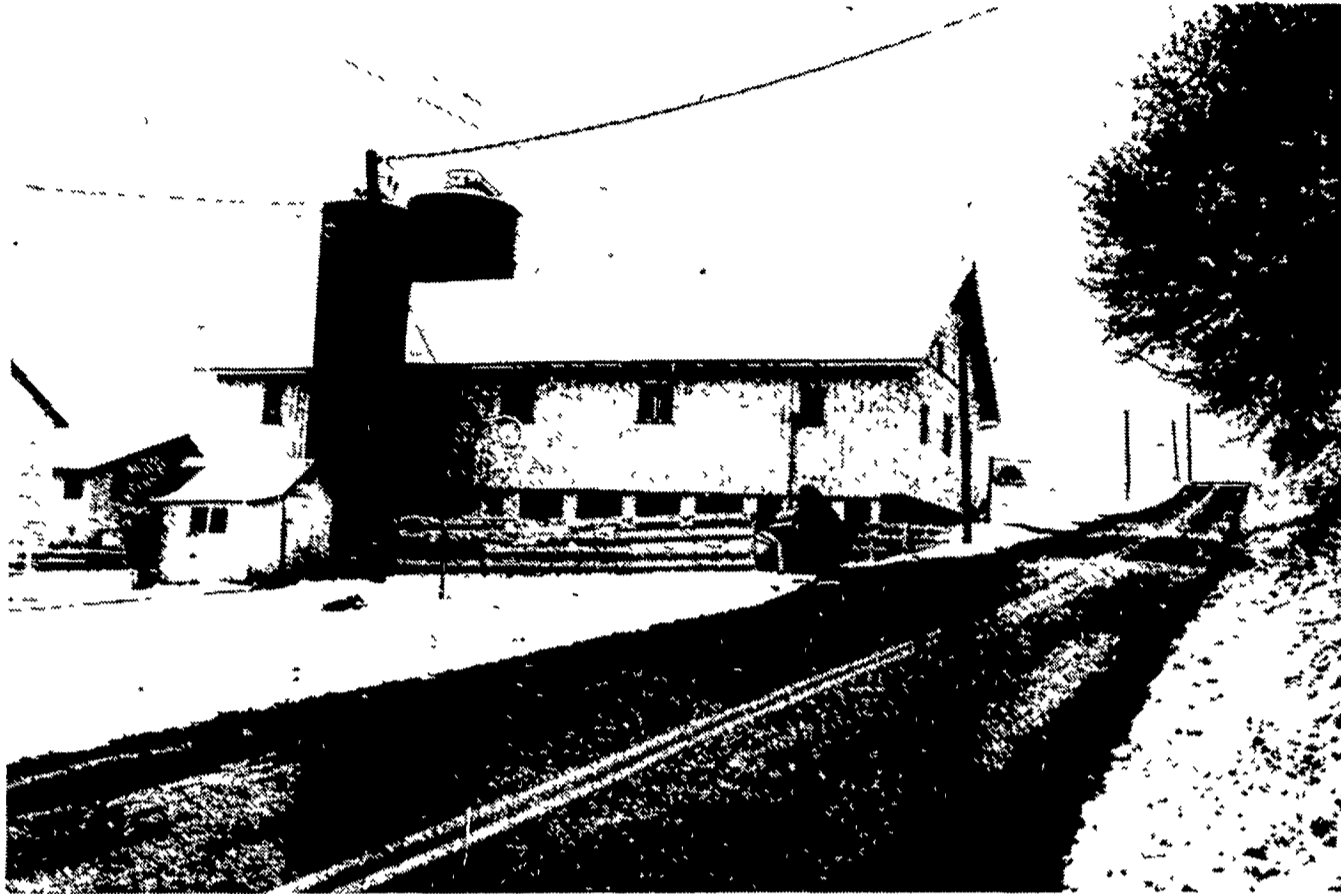


PENN JERSEY HARVESTORE SALUTES

MR. AND MRS. EDWIN FUNCK OF SAREDHILL FARM



The Funck's recently were recognized by the Lebanon County DHIA for their herd production averaging 19,101 pounds of milk and 737 pounds of butterfat on 39 registered and grade Holstein cows.

**TO HAVE A PRODUCING HERD
FEED MANAGEMENT IS
AN IMPORTANT FACTOR**

For two years Edwin contemplated purchasing a HARVESTORE.

He went on HARVESTORE tours,

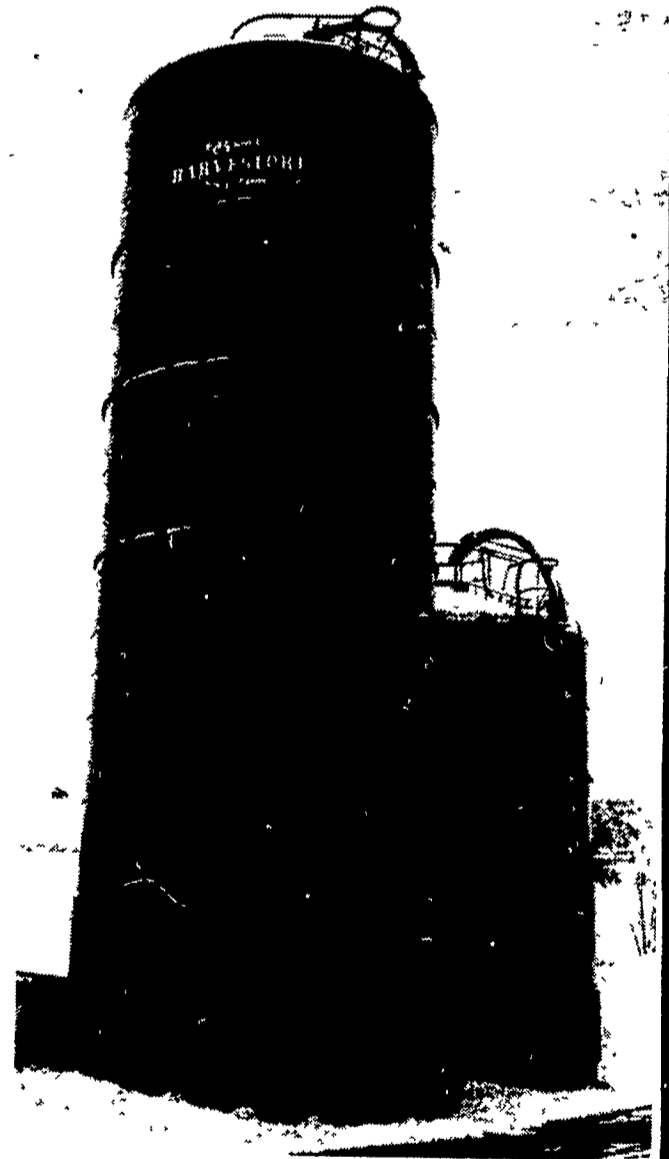
Talked to HARVESTORE owners,

And discussed the matter with a Penn Jersey representative



In 1966 the Funck's began their HARVESTORE program when they installed a 20 x 60 HARVESTORE. The first HARVESTORE was purchased to save time and money in feed handling and to keep equipment and labor investments down. His feeding program has paid off well at the dairy. In 1976 his average cost per 100 pounds of milk was \$3.66.

A second HARVESTORE unit was purchased in 1976, this one a 20 x 30 for high moisture corn.



"THAT'S MY MONEY MAKER" says Edwin Funck.

PENN JERSEY HARVESTORE

P.O. BOX 51 NEW HOLLAND, PA 17557

(717) 354-4051

**HARVESTORE
DAIRY TOUR**

DECEMBER 16

JOIN US ...

CALL



CALL US ABOUT OUR LOCAL FARM TOURS IN PROGRESS NOW.