

## New Holland

HOGS: 1175  
Retail 36.00 - 37.50;  
Heavyweight 35.00 - 35.75;  
Lightweight 35.00 - 35.75;  
wholesale 35.75 - 36.25; sows  
22.00 - 32.00; boars 19.00 -  
27.00.  
SHOATS: 540  
No. 1 and 2 46 - 69 lbs. 69.00  
- 82.00; No. 2. 30 - 42 pounds  
58.00 - 62.00, 46 - 61 pounds



### L & M FUR & WOOLEN ENTERPRISE



Quality Electrified Moutons & Furs  
Tannery Direct Dist. - Wholesale & Retail  
Check our Quality, Price & Services!

- Woolen Hosp. Pads - Natural & All Colors
- Pa. Largest Selection of Woolen Products
- Sheepskin Coats at Reasonable Prices
- See Us At Meadowbrook Market in Leola

117 W. Summit St., Mohnon, Pa.  
215-777-2465  
Hours: Mon.-Fri. 9-8:30; Sat. 9-5

### GREEN DRAGON LIVESTOCK SALES



1 mile North of Ephrata, PA

#### SALE EVERY FRIDAY

Bulls, Steers, Slaughter Cows,  
Lambs and veal calves.

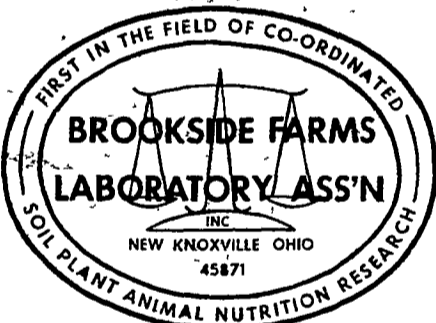
11:00 A.M. - Beef Sale Stockers & Feeders  
200 to 250 each week.

12:30 P.M. - Dairy Cows  
7:00 P.M. - Small Animal Sale

We will have consignments from Alfred  
Albright, Bob Kennedy, Ray Keiper, Kelly  
Bowser, and Dale Brewer.

Bring a Load and Buy a Load.  
For Special Sales and Herd Dispersals on the  
farm or at our barn or other market information  
call: Office 717-733-2444.

Walter H. Risser, Proprietor.



National Reputation - Local Service

#### CONTACT:

JOHN CAMPBELL

Atglen, PA  
(215) 593-5529

GARY MCGEE  
Spring Run, PA  
(717) 349-2340

DAN DERR  
Conowingo, MD.  
(301) 378-3280

## Hog Markets

### Lancaster Market

Monday Nov. 29, 1976  
HOGS: Barrows and gilts  
fully steady.  
BARROWS AND GILTS:  
US 1 200-235 lb. 37.50-38.00,  
US 1-2 200-240 lb. 36.25-37.10,  
US 2-3 200-245 lb. 35.50-36.00,  
255-275 lb. 33.50-34.50

### Vintage Auction

November 27, 1976  
HOGS: 968  
No. 1 36.75 - 37.50; No. 2  
36.00 - 36.60; No. 3 35.00 -  
36.75; Heavyweight 260 - 300  
lbs. 29.50 - 34.50; Lightweight  
150 - 180 lbs. 30.50 - 31.75;  
Sows 300 - 450 lbs. 24.00 -  
27.00; Boars 400 - 500 lbs.  
21.00, 200 lbs. 29.00 - 30.00.

Wednesday, Dec. 1, 1976  
541 Head.  
185-190 35.60-36.00; No. 1  
190-200 36.00-36.50, 200-240  
37.00-38.00; No. 2 & 3's 250-280  
34.50-36.00; Sows 340-700  
20.00-28.75; Boars 200-700  
20.00-25.00.

### Peoria Auction

Thursday, Dec. 2  
Peoria Hogs: 5000 -  
Receipts currently 400 under  
estimate  
Barrows & gilts active,  
opening steady to 25 in-  
stances 50 higher.  
US 1-2 200-230 lb. 36.00-  
36.50; US 1-3 200-230 lb. 35.50-  
36.00.

### Lancaster Auction

Wednesday Dec. 1, 1976  
HOGS: Barrows and gilts  
50-1.00 higher.  
BARROWS AND GILTS:  
US 1 200-240 lb. 38.50-39.00,  
US 1-2 200-240 lb. 37.25-38.25,  
US 2-3 200-240 lb. 36.50-37.25.

### Indianapolis

Tuesday, Dec. 2  
Indianapolis Hogs: 2000  
Barrows & gilts active,  
early steady to firm in-  
stances 25 higher.  
US 1-2 200-220 lb. 36.25, 30  
head 36.35; US 1-3 200-235 lb.  
35.75-36.25.  
2 Lots US 2-3 around 240-  
250 lb. 34.75-35.25; 2 Lots US  
2-4 around 275-295 lb. 30.00-  
31.50.

### St. Louis

Thursday, Dec. 2  
St. Louis Hogs: 6500  
Barrows & gilts moderate,  
unevenly steady to 50 lower  
largely 25 lower.  
US 1-2 200-230 lb. 35.50-  
35.75, about 200 head 36.00;  
US 1-3 200-240 lb. 35.00-35.50.

### Oklahoma

Dec. 2  
Estimated receipts 8,500  
Same day last week  
Holiday.  
FEEDER STEERS:  
Mostly Choice 300-500 lb.  
37.75-41.00, two part loads  
295-379 lb. 42.20-42.40; 500-600  
lb. 35.75-39.10; 600-700 lb.  
36.00-37.30; 700-800 lb. 35.00-  
36.50; shipment 100 head  
Choice 835 lb. Fleshy Steers  
at 35.40; Mixed Good and  
Choice 300-500 lb. 34.50-38.00,  
package thin 369 lb. at 40.00;  
500-600 lb. 34.00-36.25; 600-750  
lb. 33.75-36.00; Good 365-825  
lb. 31.50-34.50; Few Good 640-  
916 lb. Holstein Steers 25.50-  
28.00.  
FEEDER HEIFERS:  
Choice 300-500 lb. 29.00-31.50;  
500-760 lb. 30.00-32.80; Mixed  
Good and Choice 300-500 lb.  
26.50-28.75; 500-600 lb. 28.25-  
29.75; Good 340-700 lb. 25.25-  
28.00.

## Futures Trading

Closing Bids as of Thursday, Dec. 2  
Chicago Cattle Chicago Hogs New York Maine Potatoes New York Fresh Eggs

| Month    | Chicago Cattle | Chicago Hogs | New York Maine Potatoes | New York Fresh Eggs |
|----------|----------------|--------------|-------------------------|---------------------|
| November |                |              |                         |                     |
| December | 41.60          | 34.95        |                         | 73.25               |
| January  |                |              |                         | 69.20               |
| February | 40.80          | 33.15        |                         | 60.35               |
| March    |                |              | 6.80                    | 57.80               |
| April    | 40.00          | 30.65        | 7.88                    | 52.80               |
| May      |                |              | 9.60                    | 51.00               |
| June     | 42.00          | 32.80        |                         |                     |
| July     |                | 33.90        |                         |                     |
| Aug.     | 42.30          | 32.75        |                         |                     |

Trend—Cattle are lower, Hogs are higher, Potatoes are lower, and Eggs are higher.

Markets Provided by Commodity Department  
Reynolds Securities, Inc.

## CHICAGO GRAIN FUTURES

(Closing bids as of Thursday, Dec. 2)

| Month    | Corn               | Wheat              | Soybeans           | Soybean Meal |
|----------|--------------------|--------------------|--------------------|--------------|
| November |                    |                    |                    |              |
| December | 2.38 $\frac{1}{4}$ | 2.56 $\frac{1}{4}$ |                    | 193.40       |
| January  |                    |                    | 6.79 $\frac{1}{2}$ | 193.20       |
| March    | 2.46 $\frac{1}{2}$ | 2.66 $\frac{1}{4}$ | 6.83 $\frac{1}{4}$ | .97.20       |
| May      | 2.51               | 2.70 $\frac{1}{2}$ | 6.77 $\frac{1}{2}$ | 194.30       |
| July     | 2.54               | 2.73               | 6.71 $\frac{1}{2}$ | 191.80       |
| Aug.     |                    |                    | 6.60 $\frac{1}{4}$ | 189.00       |
| Sept.    | 2.53 $\frac{1}{4}$ | 2.78 $\frac{1}{4}$ | 6.29 $\frac{1}{2}$ | 184.50       |

Trend—Corn is lower, Wheat is lower, Soybeans are stronger, and Soybean Meal is higher.

Markets Provided by Commodity Department  
Reynolds Securities, Inc.

## U.S. Inspected Livestock Slaughter

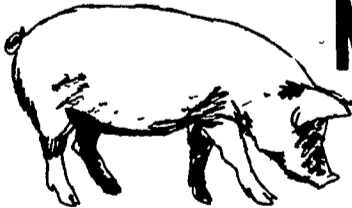
Estimated Daily Livestock Slaughter  
Under Federal Inspection

|                       | CATTLE  | HOGS      | SHEEP   |
|-----------------------|---------|-----------|---------|
| Week to date          | 565,000 | 1,270,000 | 96,000  |
| Same period last week | 441,000 | 1,006,000 | 73,000  |
| Same period last year | 592,000 | 1,066,000 | 113,000 |



## ATTENTION CATTLE FEEDERS

Do you want to make buying your stockers and feeders easy. It can be very simple. Just call and give us your order. All orders filled to your exact specifications. Call us anytime. We can be very helpful.



### NEXT FEEDER PIG SALE TUESDAY, DEC. 7 - 1 P.M.



Consign all your feeder pigs to Walter M. Dunlap & Sons  
where they will be handled by a capable and experienced staff.

Feeder pigs received from 6 A.M. to 11 A.M.

### WALTER M. DUNLAP & SONS

#### LANCASTER STOCK YARDS

Consignors can get state tags at our office, thereby saving 25c marketing expense

For Further Information, Call 717-397-5136

## J. M. HOOBER INC.

As you know there are no easy ways to farm and to raise livestock. You work hard with your hands & back & you try to use all the knowledge your parents taught you, then you trust in the Lord.

Our business has no short cuts or easy ways either. We just work hard to supply you with quality feeder cattle & stand ready to assist you when your livestock is ready for market.

### NEXT FEEDER PIG SALE DECEMBER 7, 1976

Please Call Us Soon  
PH: (717) 397-6191, 569-2084, 626-5659