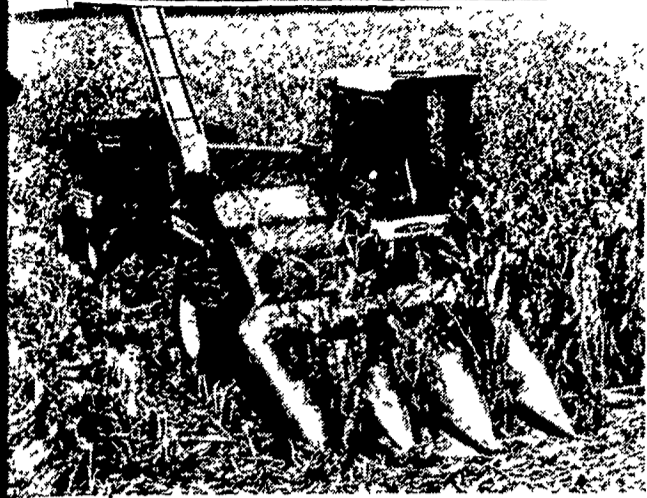


What's new



ears from the stripper plates to the feeder house conveyor.

An electric clutch (on the feeder house) permits independent shut-off of corn head for safer operation and controlled feeding of the crop.

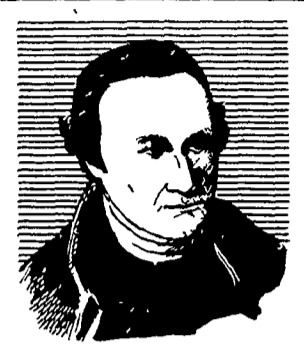
The five new Model Fas-Tach corn heads are being introduced for 1977 with six other new pieces of Uni-System farm equipment by Avco New Idea.

FIVE CORN HEADS
COLDWATER, Ohio—Five new model Fas-Tach Uni-System corn heads will be available for 1977 from Avco New Idea Farm Equipment Division, headquartered here.

The new three and four row corn heads mate with the new Fas-Tach Feeder House and fit the Uni-

Combine, sheller and picker. The new six-row corn head has been designed specifically for use with the Fas-Tach Feeder House and the 737 husking bed for harvesting seed corn.

All new corn heads are centered on the Power Unit drive wheels for better weight distribution. The low-profile design assures positive movement of the



Is life so dear, or peace so sweet, as to be purchased at the price of chains and slavery? Forbid it, Almighty God
Patrick Henry



Freda J. Beaver, Waynesboro, Pa., state winner of the 4-H photography award, was honored at the National 4-H Congress in Chicago last week by the project sponsor, Eastman Kodak Company. Her award-winning 4-H project was supervised by the Franklin County Extension Service.

Miss Beaver is shown here reviewing a project book with Phillip T. Foss, director, Midwestern region, at an opening day "get acquainted" party in the Conrad Hilton Hotel. She also received a Kodak Trimline Instamatic 28 camera and was provided with film and flip-flash arrays for a photographic record of Congress activities.

Look neighbor... it's MORE THAN A FAN



Jamesway® All-Season® Ventilation System controls condensation, odors, drafts. Air intake, exhaust, and circulation are automatic.

But don't take our word for it. Ask a neighbor who owns Jamesway.

AGRI-EQUIP.

RD2, Farmersville, Ephrata, PA
717-354-4271

ROY O. CHRISTMAN

RD1 (Shartlesville) Hamburg, PA 19526
215-562-7218 or 215-488-1904

ERB & HENRY EQUIP., INC.

22-26 Henry Avenue, New Berlinville, PA
215-367-2169

I. G.'s AG. SALES

Rt 113, Box 200, Silverdale, PA
215-257-5135

LANDIS BROTHERS INC.

1305 Manheim Pike, Lancaster, PA
717-393-3906

HENRY S. LAPP

RD1, Cains, Gap, PA 17527
717-442-8134

CARL L. SHIRK

5 Colebrook Road, Lebanon, PA
717-274-1436

STOLTZFUS WELDING SHOP

RD1, Fleetwood, PA
[215] 944-7807

M. S. YEARSLEY & SON

114 E Market St
West Chester, PA 19380
215-696-2990

ATLEE REBERT

R2, Littlestown, PA 17340
717-359-5863

HARRY L. TROOP

Rt 1 Cochranville, PA 19330
215-593-6731

SWOPE & BASHORE, INC.

Frystown R1, Myerstown, PA 17067
717-933-4138

**DALE & LARRY WEBSTER
COMPLETE DISPERSAL**

FRIDAY, DECEMBER 10, 1976

At 10:30 A.M.

Right on the Franklin Hill Road, 2 miles from route 29 at Lawsville Center, PA. Lawsville is 8 miles from Rt. 1-81 at New Milford, PA or Kirkwood, N.Y. Susquehanna Co. Arrows. (Kirkwood, N.Y. is Exit No. 1).

83 HOLSTEINS

53 Mature Cows, 2 Bred Heifers
26 heifers ranging from yearling to breeding size. Hereford service bull. Hereford yearling heifer. This is mostly a winter dairy. Majority either fresh or getting right ready. Pregnancy examined. Interstate charts.

MACHINERY

AC 190 Tractor, diesel, good rubber, chains, only 1600 hrs., really sharp; JD 60 Tractor, chains; JD B Tractor; JD A, old, not running; Oliver crawler, needs engine; 2 Lamco unloading boxes on heavy duty NH gear & flotation tires; NH 770 chopper, 12 knife, 2 row & pickup heads, ear shute & screen; 3 kicker wagons; NH 273 baler w-thrasher; MF 3 bottom 3 pt. plows; NI conditioner; MF 13' transport disc; NH No. 512 spreader w-hydraulic gate; Allied 50' grain & hay elevator, PTO; IH belt drive conveyor blower & pipe; NI 1 row corn Super Picker (new); IH 4 row planter; crop sprayer; NI rake; tedder; harrow; 2 cylinder belts; 25 very good drinking buckets. *Cornell Barn cleaner with 275' chain, complete.

MILKING EQUIPMENT

Sunset 625 gal. extra nice tank, Alamo No. 40 pump & vacuum line (new); SP 11 pump, Prefection dumping station & washer, Universal units & washer, A.B.S. breeding gestation wheel.

PRODUCE

Approximately 10,000 bales, good hay, 1/2 silo corn silage, large quantity ear corn, also a new round steel corn crib. *Jeep.

NOTE: Most of this machinery & AC tractor new in last three years, & well cared for. Cows have size & condition & starting to freshen.

See You the 10th!

Terms: Cash or approved check. Lunch.

Jim Adriance,

Auctioneer
Montrose, PA
717-278-1574