



Donald Eckman  
Ephrata, PA  
Unit 14 Pro. Tech.  
since July '76.

# We provide service with Atlantic Genetic Power sires to breed more profitable cattle for you.



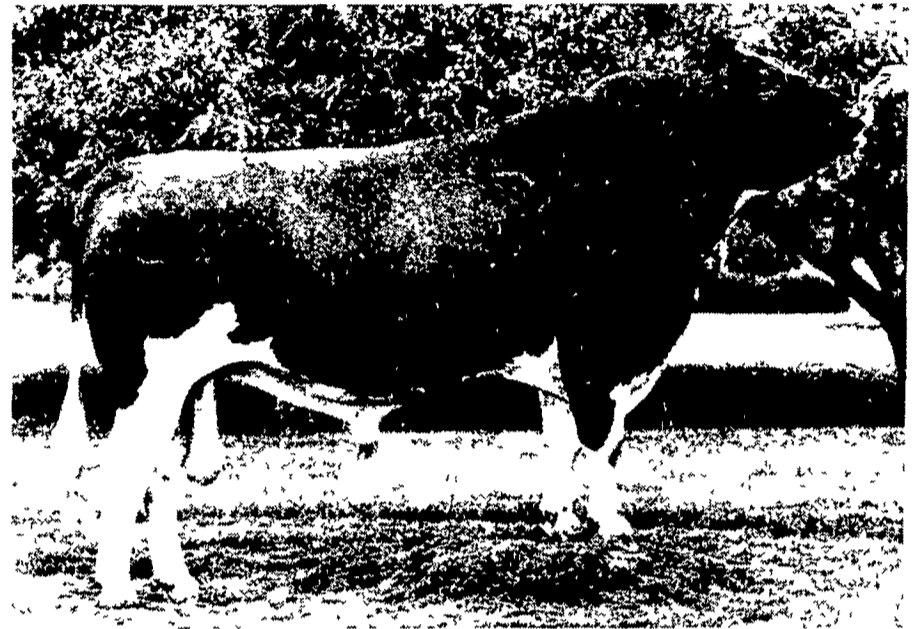
Ronald Rissner  
Womeladort, PA  
Unit 9 Pro. Tech.  
since Dec. '71

HERE ARE SOME EXAMPLES OF THE TOP QUALITY BULLS WE OFFER:



15H160 Keystone FLEETFOOT - GP & PQ

USDA [9/76] - 98 Daus. in 75 Herds Ave. 15,372M 3.60% 553F  
 Predicted Difference [80% rpt.] +553M +\$43 +10F  
 Type: 12 Classified Daus. Ave. 77.3 [act.]; 79.7 [age-adj.]  
 Sire: Paclamar Bootmaker - EX[94] & GM  
 Dam: Keystone Sparkling Fleece - EX



15H161 Kanawaka EDUCATOR - VG & GM

USDA [9/76] 108 Daus. in 60 Herds Ave. 16,303M 3.74% 610F  
 Predicted Difference [79% rpt.] +626M +\$51 +14F  
 Type: 28 Classified Daus. Ave. 81.8 [act.]; 83.2 [age-adj.]  
 Sire: Quin-Lynn Triune Prince - VG & GM  
 Dam: Kanawaka Burkgov Lucky Mandy - EX



15G117 Foremost TOP JOLLY

USDA [9/76] - 30 Daus. in 7 Herds Ave. 11,063M 4.22% 467F  
 Predicted Difference [45% rpt.] +915M +\$86 +31F  
 Type: 25 Classified Daus. Ave. 85.2  
 Sire: Gayoso View Top Command - GS  
 Dam: Foremost Valor Sarella - VG



15H114 Kilinsdale Ivanhoe JACK - VG & GM

USDA [9/76] - 8,062 Daus. in 2,004 Herds Ave. 15,547M 3.53% 549F  
 Predicted Difference [99% rpt.] +767M +\$40 -4F  
 Type: 2,194 Classified Daus. Ave. 79.3 [act.]; 79.9 [age-adj.]  
 Sire: Osborndale Ivanhoe - EX & GM  
 Dam: Kilinsdale Don Pansy - VG

These sires, and dozens more, are now available daily through our Professional Technician Service.

We are also the distributor in this area for Noba, LABC, Carnation/Genetics, Midwest Breeders, Eastern AIC, East Central, and Western Ontario Breeders in Canada.

**DIRECT-HERD BREEDERS:** check with us on semen availability and price before you place another order!

# Atlantic

LIVESTOCK SERVICES BREEDERS COOPERATIVE

Member — NAL Affiliated Breeders

24-Hour Toll-Free Phone Service:

Lancaster area 569-0411  
 throughout Pennsylvania 800-732-0391  
 Delaware & Maryland 800-233-0216

