

# Livestock market and auction news

## Des Moines

November 17, 1976

Compared to Tuesday's close: beef trade slow, demand light, limited trade. Choice 3 steer beef steady, Choice 4 50-1.00 lower, Good steady. Heifer beef steady to 1.00 lower. Cow beef steady to 1.00 lower.

### STEER BEEF

Choice 600-715 lb. YG 3 Selected Load 61.25; 600-800 lb. YG 3 60 75 Steady; 600-800 lb. YG 4 57.00 50-1.00 lower; 800-900 lb. YG 4 56.00 50-2.00 lower. Good 600-800 lb. YG 3 57.00 Steady.

### HEIFER BEEF

Choice 500-700 lb. YG 3 LTD 57.75 1.00 lower. Good 500-700 lb. YG 3 54.75-55.00 Steady to 50 lower.

### COW BEEF

Canner & Cutter 42.00 Steady to 1.00 lower.

### CHOICE PRIMAL BEEF CUTS

#### YIELD GRADE 3

Fores 130-210 lb. 51.00-51.50.

BEEF TRIMMINGS 90 percent Chemical lean, Frozen 63.00.

Compared to Tuesday's close: fresh pork cut trade moderate, demand moderate to good. Fresh loins steady, except 17-20 lb. 2.00-2.25 higher. Picnics not established. Boston butts 8 & up lb. 50 higher. Skinned

hams steady to 2.00 higher. Bellies steady to 1.00 higher. Spareribs steady, instances 1.00 lower.

### FRESH PORK CUTS

Loins 14 down lb. 63.25-64.00; 67.00 Mon. Ship; 67.00 Trm'd; 69.00 Frozen Export. 14-17 lb. 62.26-63.00; 64.00-66.00 next week shpmt; 65.25 Trimmed Steady. 17-20 lb. 52.75-55.00; late 54.75-55.00; 55.50 Tues. Ship; load 56.00 Frozen 2-2.25 higher. 20 & up lb. 46.75-48.75 Steady.

### Picnics NO SALES;

Boston Butts 4-8 lb. 42.75 load 44.00; 8 & up lb. 36.75. Spareribs 3 down lb. 61.00-64.00 Steady, instances 1.00 lower; 2-3 lb. 65.00-66.00. Skinned Hams 14-17 lb. 81.00 Steady; 17-20 lb. 68.50-70.00; mostly 69.00-70.00 2.00 higher; 20-26 lb. 60.50-61.00; mostly 61.00 load 62.00 1.00-2.00 higher; 26 & up lb. 48.50 50 higher. Bellies, Seedless 12-14 lb. 42.50-43.50; late 43.00-43.50 1.00 higher; 14-16 lb. 42.00-42.50; 16-18 lb. 40.50 Steady; 18-20 lb. 37.50-38.00; 20-25 lb. Load 32.50. Bnls CT Butts 3-4 1/2 lb. 70.50.

PORK TRIMMING 80 percent Lean 41.00 fresh; 42.50-43.00 Frozen.

Jowls 17.50; Lard 17.25.

### OFFAL & VARIETY

Stomach, Scalded 11.00-12.00.

## Carlisle Auction

Carlisle, Pa.

November 16, 1976

**CATTLE 246.** Compared with last Tuesday's market, slaughter steers strong to \$1 higher. Slaughter cows \$1 to \$2 lower. Choice slaughter steers 38.85-41.60, Good 34.50-36.75, Standard 29.00-34.00, few Utility 22.00-25.10. Choice slaughter heifers 33.35-37.75, few Standard & Good 29.25-31.00, few Utility 23.00-25.60. Utility & High Dressing Cutter slaughter cows 21.75-23.75, one 24.25, Cutters 20.25-21.75, Canners 18.00-20.35, Shells down to 15.25. Few Utility slaughter bullocks 23.00-26.50. Yield Grade No. 1 slaughter bulls 28.75-34.10.

**CALVES 166.** Vealers uneven Two Choice vealers 49.50 and 52.00, Good 36.50-49.00, Standard & Good 110-130 lbs. 27.00-33.50, 90-110 lbs. 24.50-27.00, Standard 70-90

lbs. 22.00-25.00, Utility 60-85 lbs. 2.00-12.00.

**HOGS 172.** Barrows & Gilts steady to 50c lower. US No. 1-2 210-235 lbs. barrows & gilts 35.75-36.35, No. 1-3 195-245 lbs. 35.00-36.00, No. 2-3 210-260 lbs. 34.60-35.00. US No. 1-3 285-530 lbs. sows 26.50-29.50, few to 35.00, few No. 2-3 390-535 lbs. 20.00-26.50.

**FEEDER PIGS 210.** Few US No. 1-3 20-35 lbs. feeder pigs 8.00-10.00 per head, No. 1-3 35-50 lbs. 16.00-22.00, No. 1-3 50-70 lbs. 24.50-26.00 per head.

**SHEEP 29.** One Choice 55 lbs. new crop lamb at 46.00, Good & Choice 55-110 lbs. woolled slaughter lambs 30.50-39.50. One buck at 10 00.

### CUMBERLAND COUNTY 4H BABY BEEF LAMB SALE

Held in conjunction with Carlisle Auction Champ Lamb weighing

## Leesport Auction

Leesport, Pa.

November 10, 1976

**CATTLE 353.** Supply includes 133 head feeder cattle. Compared with last Wednesday's market, slaughter steers steady to \$1 higher. Slaughter cows steady to \$1.50 higher. Few High Choice & Prime No. 3-4 1000-1340 lbs. slaughter steers 39.00-41.50, Choice No. 2-4 900-1300 lbs. 38.00-40.50, few No. 3-4 35.00-38.00, Good 34.00-37.00, Standard 32.00-34.10, few Utility 26.25-29.75. Few Choice slaughter heifers 34.00-36.00, Good 29.35-32.00, few Standard 26.00-30.25, few Utility 23.00-27.00. Utility & High Dressing Cutter slaughter cows 23.50-24.25, few to 26.10, few Commercial No. 4-5 beef breed 20.75-21.50, Cutters 21.85-23.75, Canners 20.75-22.10, Shells down to 15.00. Few Choice slaughter bullocks 35.00-36.10, Good 31.00-33.25, few Utility & Standard 23.85-28.00. Few Yield Grade No. 1340-1780 lbs. 28.25-30.25. Choice 230-575 lbs. feeder steers 32.00-35.00, Good 275-650 lbs. 28.00-33.50, Medium 335-850 lbs. 24.00-28.50; Good & Choice 330-850 lbs. feeder heifers 21.50-27.50; Good & Choice 600-900 lbs. feeder bulls 25.00-27.00, lot 32.00.

**CALVES 169.** Vealers mostly steady to \$2 lower. Couple Prime vealers 62.00 and 67.00, few Choice 50.00-60.00, Good 40.00-49.00, Standard & Good 110-130 lbs. 30.00-40.00, 90-110 lbs. 24.00-30.50, Standard 70-90 lbs. 20.00-23.00, few Utility 50-110 lbs. 5.00-17.50. Farm calves, holstein bulls 90-115 lbs. 27.00-33.00.

**HOGS 242.** Barrows & Gilts strong to \$2 higher. US No. 1-2 200-225 lbs. barrows & gilts 36.60-37.00, lot 37.75, No. 1-3 200-250 lbs. 35.85-36.75, No. 2-3 180-235 lbs. 35.35-35.75, few No. 2-4 260-340 lbs. 29.00-

100 lbs. sold at 100.00 cwt.; Reserve Champion weighing 110 lbs. sold at 77.00 cwt.; remaining 12 head ranged 50-100 lbs. sold 45.00-75.00 cwt.—

Champion Steer 1205 lbs. sold at 101.00 cwt.; reserve Champion 1100 lbs. sold 66.00 cwt.; remaining 20 head ranged 780-1330 lbs. sold 40.50-51.00 cwt.

35.75, few No. 1-3 175-180 lbs. 33.75-35.50. US No. 1-3 250-455 lbs. sows 25.75-27.50, No. 2-3 300-650 lbs. 20.00-25.75. Boars 18.00-21.50, light weights 22.00-27.50.

**FEEDER PIGS 170.** Feeder pigs steady to \$6 higher. US No. 1-3 20-35 lbs. feeder pigs 12.00-21.50 per head, No. 1-3 35-45 lbs. 22.00-28.00, No. 1-3 60 lbs. (lot) 32.00, per head, few 95-130 lbs. 27.00-32.50 cwt., lot Utility 70 lbs. 25.50 per head.

**SHEEP 37.** Choice 30-60 lbs. new crop lambs 50.00-70.00, lot 85.00, Good 65-105 lbs. woolled slaughter lambs 25.00-40.00. Slaughter ewes 11.00-15.00, few to 24.00.

## Greencastle

### FOR GREENCASTLE LIVESTOCK AUCTION

Greencastle, Pa.

NOVEMBER 15, 1976

**CATTLE 156.** Compared with last Monday's market, slaughter cows steady to 50 cents higher. Individual Choice No. 4, 1000 lbs. slaughter steer at 34.50, few Good 32.60-34.10. Utility and High Dressing Cutter slaughter cows 23.25-24.60, Cutters 20.50-23.00, few Canners 18.85-21.75. Few Yield Grade No. 1, 1050-1350 lbs. slaughter bulls 26.25-29.50, few Yield Grade No. 2, 950-1125 lbs. 22.10-25.75. Few Good 350-450 lbs. feeder steers 28.75-31.75, few Medium 700-850 lbs. 23.75-27.75.

**CALVES 194.** Vealers \$1.50 to \$2 lower. Couple Prime vealers 61.00 and 62.00, few Choice 49.00-54.00, few Good 42.00-50.00, Standard and Good 110-130 lbs. 27.00-40.00, 90-110 lbs. 24.00-26.50, Standard 70-85 lbs. 22.00-25.00. Farm Calves: Holstein bulls 90-110 lbs. 25.00-31.50, few to 35.00.

**HOGS 26.** Few US No. 1-3 250-255 lbs. barrows and gilts 36.10-36.50. US No. 1-3 290-460 lbs. sows 24.00-30.00. Individual Boar at 20.00.

**FEEDER PIGS 45.** US No. 1-3 30-35 lbs. feeder pigs 11.00-12.00 per head, one lot No. 1-3 55 lbs. at 19.00 per head.

**SHEEP 0.** NO SALES ON OFFER.

## Dewart Auction

Dewart, Pa.

NOVEMBER 15, 1976

**CATTLE 242.** Compared with last Monday's market, slaughter steers grading Good about steady. Slaughter cows grading Utility steady to 50 cents higher, Cutter and Canner steady to \$1 lower. Choice 2-3, 900-1150 lbs. slaughter steers 37.00-38.75, individual High Choice at 40.10, Good 34.00-37.00, few Standard 32.00-34.25. Few Good slaughter heifers 30.00-34.00, few Standard 27.00-29.50. Utility and High Dressing Cutter slaughter cows 22.00-24.50, couple to 24.85, Canners 18.00-20.35, few Shells down to 15.00. Few Good slaughter bullocks 32.00-36.75, few Standard 27.75-31.75. Few Yield Grade No. 1, 1200-1500 lbs. slaughter bulls 24.00-27.75. Few Choice 375-575 lbs. feeder steers 34.25-38.00, few Good 600-850 lbs. 31.00-34.00.

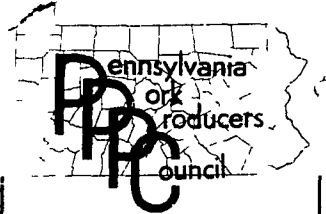
**CALVES 132.** Vealers grading Standard and Good 70-110 lbs. 50 cents to \$1.50 lower. Few Choice vealers 48.00-54.00, Good 38.00-47.00, Standard and Good 110-130 lbs. 32.00-37.50, 90-110 lbs. 26.00-31.00, Standard 70-85 lbs. 22.00-26.00. Farm Calves: Holstein bulls 90-115 lbs. 29.00-39.00.

**HOGS 363.** Barrows and gilts weak to 50 cents lower. US No. 1-2 190-230 lbs. barrows and gilts 35.40-36.40,

No. 1-3 190-245 lbs. 34.50-35.50, few lots No. 2-3 245-260 lbs. 33.50-34.85. US No. 1-3 350-575 lbs. sows 29.00-33.75. Few Boars 17.25-24.50.

**FEEDER PIGS 175.** US No. 1-3 25-30 lbs. feeder pigs 16.50-19.00 per head, No. 1-3 35-50 lbs. 22.50-26.00 per head.

**SHEEP 36.** Choice 85-110 lbs. woolled slaughter lambs 37.00-40.00, few Good 65-80 lbs. 34.00-35.00. Slaughter ewes 12.00-16.00.

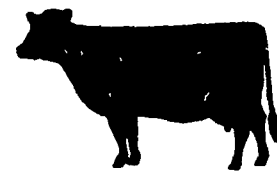


Join your fellow pork producers in supporting pork promotion and production research to keep hogs a profitable farm enterprise. Tell your market or buyer that you want 10 cents per market hog or 5 cents per feeder pig deducted to support these programs. Most markets and buyers will cooperate fully if you let them know.

The PPPC was formed and is funded and directed by producers. There is no Government Agency involved.

For more information, contact:

**HERBERT SCHICK,**  
Secretary-Treasurer  
Kutztown, R.D. 2, Pa.  
19536  
Phone 215-285-6519



## Thinking About Building a CAGE LAYER HOUSE?

Want Dry Litter!  
Low Bacteria Count!  
Requires No Training Program!  
Consider the VAL-CUP Poultry Watering System



We Will Be Glad to Show You A Full House in Operation Six Months Using VAL-CUP

**PHONE 717-426-3286**

By Val-Cup - Lancaster, PA

## FARMERS . . .

Know what you are going to get for your hogs before they leave your farm.

EVERY MON. TUES. & WED.  
8 A.M. to 1 P.M.

**SAVE YOUR SELLING COST!**  
**HOGS WEIGHED IMMEDIATELY!**  
**PAID IMMEDIATELY!**

## PENN PACKING BUYING STATION

AT GREEN DRAGON LIVESTOCK SALE  
1 Mile North of Ephrata RD3, Pa  
Call for Market Quotes each morning

717-733-9154 or 717-733-9648



## BEEFALO HYBRID CATTLE

### BEEFALO — IT'S GREAT

- Rapid gains on grass and roughage
- 55-65 lb Births - up to 1100 lb yearling
- Test data show 62 percent carcass dress out
- We stock and distribute Pureblood Beefalo Semen and Half-Blood Beefalo heifers and bulls
- Visit our farm and see our animals

**SEMEN \$12** an ampule

NOW TAKING ORDERS FOR 3/4 BULLS & HEIFERS

## BEEFALO N & J

4270 Quakerbridge Road  
Princeton, NJ 08540  
609-896-0336

Member World Beefalo Association