

\$22,000 tops Curtiss sale

Fifty-eight registered Holstein cows and heifers, all daughters of Curtiss Breeding Service bulls, averaged \$3,730 in the Curtiss '76 Classic Sale at Elburn, Illinois, October 4. Forty-nine of the 58 sold for \$2,000 or more, according to Ted Krueger, the Curtiss

executive who coordinated the event. Twenty six brought \$3,000 or better.

The \$22,000 sale topper, consigned by Joseph L. Vierra and Son, Livingston, California, combined the two best-known Curtiss Holsteins of recent times. An "Excellent 92" daughter of Pawnee Farm Arlinda Chief out of an "Excellent 90" daughter of Paclamar Astronaut, she went to BHL Ovary Transplants of Paris, Ontario, and Scientific Transplants of Las Animas, Colorado.

Second high at \$10,500 was a bred heifer sired by Rosafe Citation R and consigned by R. Dale Jones, Claypool, Indiana. She was purchased by Zenichi Hashimoto of Hokkaido, Japan.

A "Very Good 88" daughter of Paclamar Astronaut with two records over 20,000 pounds of milk was next in line at \$10,000. She was consigned by Enol Additon, Greene, Maine, and purchased by Irvin Recker, Yorkshire, Ohio.

The sale was the seventh in a series dating back to 1961 under the sponsorship of Curtiss Breeding Service, a division of Searle Agriculture Inc.

David H. Bachmann of Sheboygan Falls, Wisconsin, served as sale manager. A crowd estimated at 1,800 was in attendance. Approximately 1,000 people took part in open house at the Curtiss Production Center on the afternoon and evening preceding the sale.

Due to impressive fuel economy, Jotul is an investment that can pay for itself over the first winter.



Economical round-the-clock heating with one of Jotul's cast iron woodburning stoves!



NO. 602 WOOD STOVE
Little brother of the 118. Only a foot and a half long, but this little stove heats average sized rooms.



NO. 606 WOOD STOVE
Traditional arch design provides a heating chamber and a larger surface for heat radiation.

- Many Models to Choose From
- Exceptionally Long Burning Time
- Practical and efficient
- Lasts a lifetime

• Simple draft and temp. control

Showroom at
STILLWATER POND

Off Rt. 501 between
Brickerville and Schaefferstown
Ph. 717-949-3002

What's New

MINERAL FEEDER
A new Agstar mineral feeder that attaches to liquid feeder tanks has been announced by Star Agri Products. Built of 16-gauge steel and equipped with hinged brackets to prevent damage by livestock, the new feeder is attached by hooking brackets over the lip of the tank sidewall.

The two-compartment

trough is covered to protect the contents. Overall dimensions are 17 inches by 24 inches and the trough is seven inches by 10 inches.

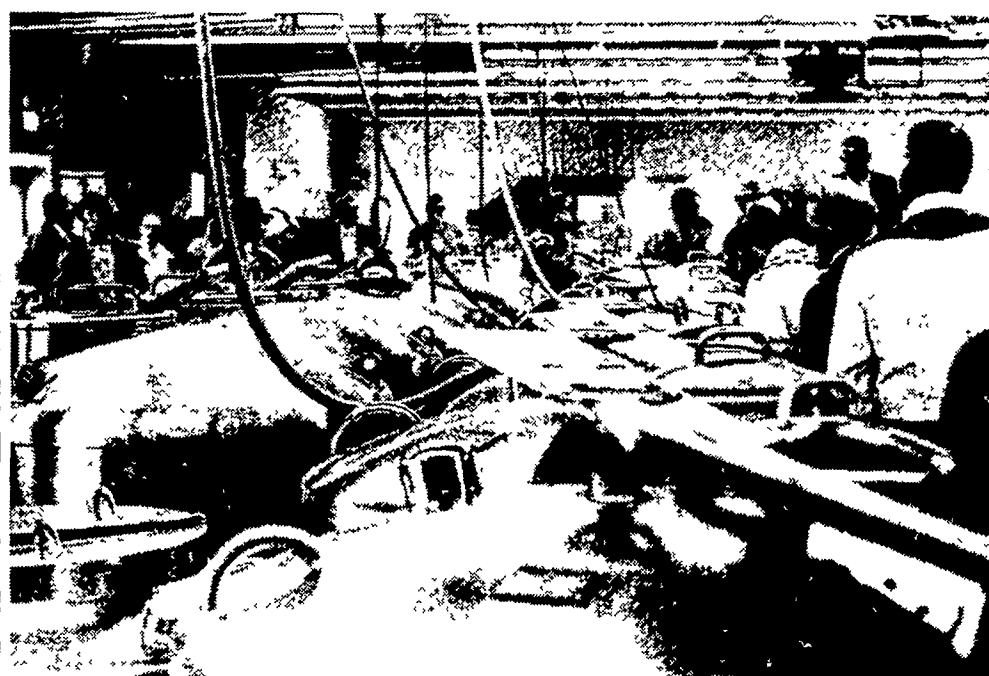
According to Brad Donahoe, marketing manager for Star Agri Products, the new feeder is one of the newest additions to the line of liquid feeding equipment that includes nine models of tanks with

capacities from 1925 pounds up to 5500 pounds and a choice of three feeder wheels.

The company also makes a liquid feeder wheel and bracket that can be used with a 55-gallon drum or other suitable container.

Agstar is the new brand name for the more than 450 styles and sizes of livestock related products formerly sold under the Starcraft brand.

ABS visited



American Breeders Service, DeForrest, Wis., opened its doors to visitors from all over the United States and various other parts of the world last month. Among the hundreds of people to tour the facilities were dairymen from Pennsylvania. ABS representatives arranged transportation and tours. Shown in the top picture is the interior of one of ABS' several bull barns. Built 10 years ago, the structure was designed

to be 20 years ahead of its time. Aside from being immaculately kept, the barn also features stereophonic music and an adjoining "hall of fame." The middle picture depicts another portion of the 1100 acre complex where younger bulls are stabled while awaiting proofs. Down below is "The First National Bank of ABS," where 2½ million ampules of semen are stored.

Lancaster Farming photos by Dieter Krieg

ROOFING

Asphalt Shingles and Metal Roofing

SIDING

Aluminum Siding, Insulated or Plain
Aluminum Soffit and Fascia

SEAMLESS ALUMINUM SPOUTING

White Seamless Aluminum Gutters
Old Style Half-Round Spouting

AWNINGS • PORCH ENCLOSURES

STORM WINDOWS and DOORS

CUSTOM MADE - BAKED - ON FINISH



- Local company with 20 years experience
- Employing skilled local workmen
- Serving Lancaster and surrounding counties.

PHONE 1-717-354-4114

LEON M. MARTIN, Inc.

PHONE 354-4114

EPHRATA R.D. 3

3 MILES EAST OF EPHRATA ON ROUTE 322 IN HINKLETOWN