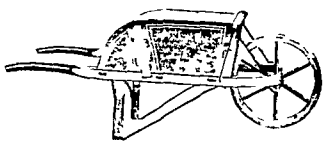




NOV. 15-21, 1976

Old owl hoots in the cold moonlight.

Order your turkey now President Lincoln delivered Gettysburg Address Nov 19, 1863 New moon Nov 21 Pony Express operations ended Nov 20, 1861 Average length of days for the week, 9 hours, 40 minutes US and Soviet Union establish diplomatic relations Nov 16, 1933 The best place to find a helping hand is at the end of your own arm



so could you tell me where I can get a copy? G O, Sherman, N Y We're saying you'll have your snow shovels out by mid-November in your section You can pick up a copy on your newsstand or if you can't find it, we'll mail you a copy if you send one dollar to The Old Farmer's Almanac, Dublin, New Hampshire 03444

Home Hints. To remove wallpaper, mix together one heaping tablespoon of saltpeter and one gallon hot water Apply freely to wallpaper, keeping the water hot

OLD FARMER'S WEATHER FORECASTS

New England: Begins with snow inland, then drizzle, then snow by Wednesday, week's end is cold
Greater New York-New Jersey: Early week snow flurries and cold; turning to rain by Thursday, clear and very cold for remainder of week
Middle Atlantic Coastal: Cloudy and cold with rain by Wednesday, sunny and freezing for the weekend
Piedmont & Southeast Coastal: Early week cloudy, cold and frosts with rain by Wednesday, week's end cold and cloudy
Florida: Frosts in north, clear, cool nights
Upstate N.Y. - Toronto & Montreal. Early week cold and snowy, 6-9", by Wednesday sunny, cold snap and snow for week's end
Greater Ohio Valley: Flurries with 7" of snow in east at beginning of week, fair with some rain and snow in the east by Thursday, cold and snowy for remainder of week

(All Rights Reserved Yankee Inc Dublin NH 03444)

East Coast Carlot Meats

November 10, 1976
 Compared to Tuesday's close: demand and commitments continue light as reported by USDA. Carcass Steer Beef steady to .50 lower. Cow Beef in limited test .50 higher, Boneless Beef steady. Lamb compared to last week steady to 2.00 lower, full decline on 65-75 lbs. Fresh Pork Loins uneven, mostly steady to 4.25 lower, decline for early next week delivery. Skd. Hams uneven, 17-20 lbs. 1.00-1.50 higher, 20-26 lbs. 1.25-2.00 lower.

Steer Beef
 Choice 3 600-800 lbs. 5 loads 6300-6350 steady to .50 lower; 4 600-800 lbs. 5950 no comparison.
 GOOD 3 600-800 lbs. 4 loads 5950 .50 lower.

Cow Beef
 UTILITY BRKG. 4-5 3900 no comparison.
 UTILITY BNG. 1-2 600 lbs. up part load 4450 no comparison.

CANNER-CUTTER 1-2 350 lbs. up LTD 4800 .50 higher.

Choice 3 Primal Beef Cuts
 FULL PLATES 2800-3000 no comparison.
 SHORT PLATES 2250-2400 no comparison.
 BRISKETS 4000-4200 no comparison.

Lamb Carcass Choice & Prime 3-4 (Compared To Last Week)

55 lbs. down 9100-9400, few 9500 steady to 1.00 lower.
 55-65 lbs. 8500-8700 steady
 65-75 lbs 7800 steady to 2.00 lower

Fresh Pork Cuts
 LOINS 14 lbs down 6800-7225 steady to 4 25 lower; 14-17 lbs. 6700-7400 uneven.
 PICNICS 4-8 lbs 3725 no comparison.
 SKD HAMS 17-20 lbs 7575-7625 1 00-1 50 higher, 20-26

lbs. 6625 1.25-2.00 lower; 26 lbs. up 5350-5475 no comparison.

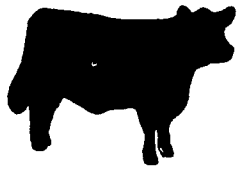
Smoked Pork
 SKD. HAMS 16-20 lbs. 3 loads 7800 no comparison; 19-23 lbs. 1 load 7600 1.00 higher.

SEMI BNLS. 17-20 lbs. 3 loads 9000 no comparison.
 PICNICS 4-8 lbs. load 4900 vacuum bag no comparison.
 NO 1 VACUUM PACK SLICED BACON 2 loads 8500 no comparison.

BONELESS BEEF 90 Pct. Chemical Lean, Fresh 6650 steady.

BONELESS BEEF 85 Pct. Chemical Lean, Fresh 6300 steady.

BEEF TRIMMINGS 50 Pct. Chemical Lean, Fresh 2200-2500 no comparison.



Des Moines

November 10, 1976
 Compared to Tuesday's close: Fresh Pork cut trade fairly active, demand moderate to light. Fresh Loins steady to 4.25 lower with best interest for immediate shipment with lower sales into next week. Picnics 4-8 lbs. 1.00 lower, 8 & up LS steady to 50 higher. Boston Butts steady to 1.00 lower. Skinned Hams 20 lb. & down steady to 1.50 higher, 20 lbs. & up 50 to 2.25 lower. Bellies 50-2.00 higher.

Fresh Pork Cuts

LOINS 14-dn lbs. 64.75-69.00; Load 70.00 steady to 4.25 lower; 14-17 lbs. 63-75-68.00; Load 69.00 steady to 4.25 lower; 17-20 lbs. 61.50 steady; 17-22 lbs. 58.75; 20 & up lbs. 49.25 steady.

PICNIC 4-8 lbs. 33.00 1.00 lower; 4-8 lbs. 35.50 trimmed.

BOSTON BUTT 4-8 lbs. 42.75 1.00 lower; 8 & up 38.75 steady.

SPARERIBS no sales.

SKINNED HAMS 14-17 lbs. 78.00 steady; 17-20 lbs. 72.50-73.00 1.00-1.50 higher; 20-26 lbs. 63.00-64.50 50-1.00 lower; 26 & up lbs. 50.25-51.50; mostly 50.25-50.75 1.75-2.25 lower.

BELLIES, SDLS 8-10 lbs. 38.75-39.50; 10-12 lbs. 42.50; 12-14 lbs. 43.50-44.50 1.50-2.00 higher; 14-16 lbs. 42.50 50-1.00 higher; 16-18 lbs. 40.00 1.00 higher; 18-20 lbs 35.00-36.00 1.00-1.50 higher; 20-25 lbs. 30.50.

BNLS CT BUTT 1 1/2 to 3 lbs. 72.75; 3 to 4 1/2 lbs. 73.00-74.00.

FEET 12.50-14.50.
 OFFAL & VARIETY
 LIVERS 30's 14.75.

Compared to Tuesday's close: Beef trade closing slow, demand moderate. Steer & Heifer Beef steady to 50 lower. Choice 3: Arm Chucks 1.00 lower. Cow Beef not well established.

Steer Beef
 CHOICE 3 600-800 lbs. 59.50-60.00; mostly 60.00 steady to 50 lower; CHOICE 4 600-800 lbs. 56.00-56.50; CHOICE 4 800-900 lbs. 55.50; GOOD 3 600-800 lbs. 56.00 50 lower.

Heifer Beef
 CHOICE 3 500-700 lbs. 57.75-58.75; Mostly 58.75 50 lower; GOOD 3 500-700 lbs. 53.75.

Cow Beef
 UTILITY (BNG) 2-3 42.00.
 Choice 3 Primal Beef Cuts

ARM CHUCKS 75-120 lbs. 46.00 1.00 lower.

RIBS 24-40 lbs. 90.00-90.50.
 SHORT PLATES 22.00.
 BEEF TRIMMINGS 50 Pct. Chem. Lean Fresh 21.00-22.00.

Danville

November 8, 1976
 STEERS: Standard to Good 34.00 to 35.75, Other 32.00 to 33.60.

FEEDER STEERS: Good to Choice 33.00 to 34.00, Standard to Good 28.00 to 32.00.

COWS: High Choice to Prime 23.00 to 24.75, Good to Standard 22.00 to 23.35, Utility 20.00 to 21.50, Canners 17.00 to 19.00.

CALVES: Good to Choice 40.00 to 45.00, Standard to Good 19.00 to 35.00.

HOGS: 34.40 to 35.30.
 SOWS: 25.00 to 30.25.

Baltimore USDA

Nov. 8, 1976
 CLOSE:
 CATTLE 600: few sales slaughter steers steady though market not fully tested. Heifers scarce, cows weak to 50 cents lower, bulls steady, feeder cattle 50-1.00 lower. Supply 15 per cent slaughter steers & heifers, 45 per cent cows, 35 per cent feeders, balance bulls.

SLAUGHTER STEERS: package Prime 4 1200 lbs. 40.00; Good 2-4 950-1350 lbs. 32.00-36.50; few Standard 2 1145-1235 lbs. 25.10-25.75

SLAUGHTER HEIFERS: Package Good & Choice 2-3 975 lbs. 34.00.

BULLS: Yield Grade 1 1000-1400 lbs. 24.75-27.60; few 1400-1500 lbs. 26.25-30.00; Individual 2075 lbs. 31.35

COWS: Utility 2-3 20.50-24.35; few Standard 2-24.75-25.00; Commercial 3-5 16.75-20.85; Cutter 18.00-22.00; Canner & low Cutter 14.50-18.00

FEEDER CATTLE:
 Choice steers 650-950 lbs. 32.50-34.00; Good 700-925 lbs. 26.00-31.25; few Standard 865-950 lbs. 21.00-22.50; Good heifers 400-700 lbs. 18.50-23.50; Good steer calves 425-525 lbs. 29.25-31.50.

HOGS 600: Compared with Thursday Barrows & Gilts steady to 50 cents higher. US 1-3 190-230 lbs. 34.50-34.75

SOWS: \$1.00 higher 125 head 35.00 US 1-3 300-600 lbs. 25.00-26.00 US 2-3 230-250 lbs. 33.50-34.50; US 2-4 250-280 lbs. 32.00-33.50

VEAL & CALF AUCTION
 150 few Choice Vealers 176-260 lbs. 45.00-51.00; Good 120-260 lbs. 34.00-44.00; Standard 70-130 lbs. 23.50-34.50; Good calves 270-400 lbs. 22.50-26.50; several Choice 300 lbs. 34.00-38.50; Individual 335 lbs. 45.50

SHEEP AUCTION 100: Lot Choice & Prime wooled slaughter lambs 93 lbs. 41.50; lot Choice 76 lbs. 37.75.

L & M FUR & WOOLEN ENTERPRISE



Quality Electrified Moutons & Furs
 Tannery Direct Dist. - Wholesale & Retail
 Check our Quality, Price & Services!

- Woolen Hosp. Pads - Natural & All Colors
- Pa Largest Selection of Woolen Products
- Sheepskin Coats at Reasonable Prices
- See Us At Meadowbrook Market in Leola

117 W. Summit St, Mohnton, Pa
 215-777-2465
 Hours: Mon.-Fri. 9-8:30; Sat. 9-5



OUR GOAL IS GETTING TOP DOLLAR FOR YOU

SHIP TO THE
DANVILLE LIVESTOCK MARKET

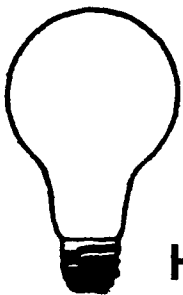
Old Rt. 11 Danville, Pa.
 Phone (717) 275-2880

SALE EVERY MONDAY 2 P.M.

Horse Sale 2nd Sat. Every Month 10:30 A.M.

OWNER: MELVIN M. LEHMAN
 717-275-2880 Bus.

POULTRYMEN



FOR A
BRIGHT IDEA

CALL
HALLER ELECTRIC, INC.
 Route 2
 Denver, Pa. 17517

SPECIALIZING IN POULTRY HOUSES, ALSO GRAIN DRYERS

SEE JOHN FOR ALL YOUR WIRING NEEDS.

CALL
215-267-7610

LEESPORT MARKET & AUCTION, INC.

North end of Leesport Turn East off Route 61
 "WHERE FRIENDS MEET"



BERKS COUNTY'S ONLY WEEKLY CATTLE & SWINE AUCTION - WED. at 1 P.M.

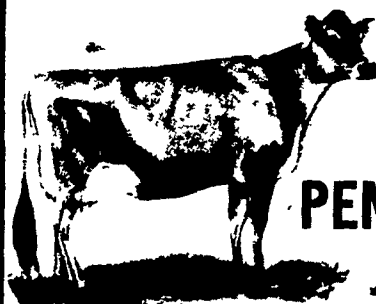
FARMER'S MARKET Every Wed., 12 Noon to 9 P.M.

Garden Fresh Fruits & Vegetables - Bakery Fresh Cakes, Pies and Buns - Butcher Fresh Meats & Cheese - Sporting Goods - Clothing - Furniture - Jewelry - Used Items & Collectibles

Phone 215-926-1307

LeRoy Weist & John Weist, Mgrs.

We're
 Proud Of



PENNSYLVANIA JERSEYS!!

Numerous Jersey herds in Pennsylvania now have Rolling Herd Averages above 11,000 lbs. milk, near 600 lbs. fat . . .

Income over Feed Costs exceeds \$1000 per cow in many cases . . .

Jersey milk becomes increasingly valuable as demand increases for high solids in milk . . .

Individual records continue to climb - a first-calf heifer in s.e. Pennsylvania recently completed a record of 2-1 365 22030 1075 (2x actual).

To locate Jersey breeders in your area write for the Pennsylvania Jersey Breeders Directory from: Dreisbachs' Longmeadows Farm, R. D. No. 1, Hamburg, Pa. 19526.

PENNSYLVANIA JERSEY CATTLE CLUB