

Real Estate

JUNIATA COUNTY - CROP & BEEF FARM. 4-bedroom house with barn & out-buildings on 200 acres - 80 tillable. Financing available. Contact Bob Arnold - Gaughen Latham Commercial Realty, P.O. Box 686, Camp Hill, 717-763-1800.

FOR SALE — 81 acre steer feeding farm, Brecknock Township, Berks County. Large 10-room stone home with 2 full baths plus 2 powder rooms. Wall to wall carpeting throughout house. Newly remodeled. 3-room guest house w-fireplace. Large bank barn 40'x100', feed lot macadamized and fenced. A-frame office building 24'x30'. 72 acres of cropland, 9 acres of pasture with stream and pond. For more information call - 717-393-3921 - Lancaster Production Credit Association, 411 West Roseville Road, Lancaster, Pa. 17604

LANCASTER COUNTY
Over 200 Acres with meadow, pond, and some woods, Dairy, stanchions for over 80 cows, large silo, 5 bedroom house.

36 Acre farm, general, 4 bedroom house.

12 Acres with large house, barn and chicken house, near Lancaster.

LEBANON COUNTY
40 Acre General, large barn, large house with all conveniences.

49 Acres, no buildings.

30 Acre general with barn, brick mill, carriage house, frame house with hot water heat, plus large brick 5 apartment building.

BERKS COUNTY
130 Acres tillable, Dairy, plus woods and meadow. 30 stanchions, 2 silos, 1 Harvestore silo, large house.

140 Acre General, 5 bedroom house, 2 wells and 2 streams.

18 Acres, barn, 2 buildings with modern 3 bedroom mobile home.

4 Acres, home in country with other buildings.

MONTGOMERY COUNTY
50 Acre dairy with large house.

CENTRE CO.
450 Acres woodland, access by Township road. \$300 per acre.

150 acres woodland, access by Township road, \$300 per acre.

COLUMBIA CO.
70 Acre general farm. Township road frontage all four sides. Priced to sell.

PERRY CO.
Four farms - 500 acres tillable. Owner financing.

CLINTON CO.
NITTANY VALLEY
New Listing - 142 Acre general farm, \$125,700. Owner financing.

193 Acre dairy farm, owner financing.

Commercial Possibilities-80 Acre General Farm with 4 bedroom house.

Commercial land, total of 29 acres, can be divided.

CHRISTIAN M. MOSEMAN, REALTOR
Akron, Pa.
717-859-1004 or 733-1224

Real Estate

Fulton County - Sideling Hill Mountain, 145 Acre of land, average timber, opportunity for persons in building hunting cabin. Excellent hunting. \$400.00 per acre. Richard Cover, 402 South 1st, McConnellsburg, Pa. 17233 717-485-4147

Floyd County, Virginia
35 miles southwest of Roanoke.

156 acre working cattle farm with lovely farmhouse to remodel, good outbuildings, ample water supply (springs and creeks), and approx. 30 acres wooded. Excellent possibilities as a dairy farm (has a block milk house) or as a truck farm. Priced at \$96,500 for farm only or \$118,700 for Angus cows, farm equipment, hay and ensilage.

Grade A dairy farm- 167 acres with remodeled 2-story farmhouse, 120' x 40' block barn with full loft, extra hay shed, lounging shed, milk shed with pipeline milkers and bulk tank, tool-equipment shed. Excellent water throughout property, 80 acres pasture-all fenced. Sale includes 80 milk cows, tractors, 4-WD ¾ ton pick-up and All related farm equipment. Priced at \$225,000 with owner financing available.

For further information on these and other listings please contact

STROUT REALTY, INC.

P.O. Box 254,
Floyd, Va. 24091
AC 703-745-2375.

ROBERT E. PLANK

Realtor
717-393-1384
Clinton Co.

CAMP SITES

30 A., 10 A. woodland, near Salona, Good hunting.

83 A., 75 A. woodland, near Swisssdale.

42 A. woodland, near Parvin.

52 A. all woodland S. of Mackeyville.

72 A. 45 A. woodland, N. of Dunstown.

DAIRY FARMS

130 A. Dairy, 94 A. tillable, nice house, on hard road.

130 A. Dairy, loafing shed, lg. modern house.

CENTRE COUNTY DAIRY & GENERAL
140 A. 95 Tillable, needs some work.

Sm. Dairy, Good Cropper, Spring water.

90 A. good bldgs., stream runs through property.

246 A. 105 tillable, pig farm, Bank barn, frame house.

FRANKLIN CO. DAIRY FARMS
100 A. Dairy, brick house.

100 A. nice dairy barn, horse barn, nice house
Call
ELMER ROHRER
717-687-8365

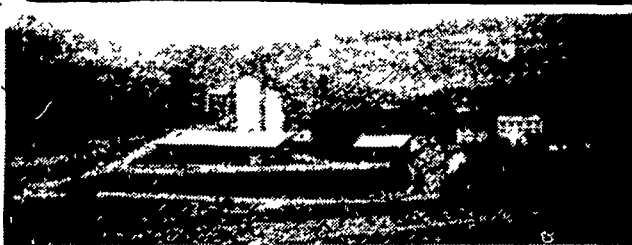
BERKS COUNTY

94 ACRE HORSE OR STOCK farm 20 miles west of Reading. 100' x 48' barn with box stalls. Other buildings. 5 Bedroom, 3-½ bath newly restored 1790 home. Stream, some woods and about 80 acres for pasture and crops. Much new split, rail fenced pastures. Owners sacrifice at \$199,000 for quick sale.

NEAR SHILLINGTON 56 Acre Beef operation. Barn with 2 16 x 60 Silos with auto. unloaders and feeders. Streams, much road frontage. 4 bedroom, stone house with oil hot water heat and bath. Great value at \$99,500.

CALL HOMER STOLTZFUS at

Wertz Hoffman Parks - Realtors,
Reading, Pa. 19609
215-678-3491



LYCOMING COUNTY'S BEST

M-1334 A farmer's dream come true. 194 acre dairy farm with over 120 tillable. Soil is excellent corn & alfalfa ground and mostly Leckkill Silt loams. Over 200 additional acres available for lease next year. Frontage (1½ mile) on 3 good roads. Beautiful buildings. 150 head capacity 78 x 136 addition houses, 114 head in comfort stalls. Completely automated Klingway feeder system, 4 silos, 30 lever stall milking area with pipeline. Heifer & chicken sheds. Butcher shop. Fresh cow barn. New pond. 2 beautifully remodeled houses. Owner's home has fireplace & modern kitchen. Much, much more. Asking \$250,000. Don't let the price fool you! Call up. This farm will pay for itself. Owner, now operating 900 acre farm in Indiana, says sell. Wants to liquidate immediately. Owner & Production Credit financing available. Call us. See it. Talk it over. Then decide. Spring or fall closing at buyer's convenience. Write or Call for free lists. Many more farms available.



RD 1, Box 41
Mansfield, PA. 16933
Phone: 717-662-2138

FARMS FOR SALE



Beef operation, 153 acres with 40 x 90, 30 x 72 and 12 x 44 loose housing areas. 2 silos, 20 x 60 cement and 13 x 36 wood with unloaders. A 100' bunk feeder, a 40 x 50 machine shed and a structurally sound house which needs redecorating. \$120,000.

44 stall, modern dairy, 60 acres, limestone soil, loose housing, 2 silos, a lovely brick, farm house. \$185,000.

362 acres with 210' barn easily adapted to either beef or dairy operations. 2 silos, machine sheds and very nice, modern, farm house. \$295,000.

Beautiful dairy facilities, 216 x 50 ft. dairy barn, 40 comfort stalls, 50 x 116 loose housing, 2 large machine sheds and a lovely farm house. \$225,000.

236 acres with a 33 stall dairy barn, pipe line milker, bulk tank, loose housing and modern farm home. \$130,000.

205 acres with a 45 x 90 barn and a very nice 8 room and bath farm home. \$150,000.



Real Estate

Real Estate

FARMS FOR SALE

Franklin County, 91 Acre Dairy Farm, 24 stanchions, 50 loafing stalls, bulk tank, pipeline, limestone soil, excellent stone home, near new Shalom Christian Academy.

Franklin County, 150 Acre Dairy Farm, Double Six Herringbone Parlor, 2 concrete silos 20' x 72', 1 silo 20' x 60', 134 Loafing stalls, 12,000 bu. shelled corn storage-dryer and grinder, borders stream, 2 nice homes, near new Shalom Christian Academy.

Franklin County, 300 Acre Stock Farm, in two tracts each with small stream, limestone soil, 4 houses, desirable location, near new Shalom Christian Academy.

Fulton County, 100 Acre Dairy Farm, 50 stanchions, pipeline, tank, silos-14' x 50' and 14' x 45', 190 feed bunk, paved cow yard, modern Brick home, priced reasonable, 60 additional Acres may be rented.

MINER S. ROCKWELL JR. REAL ESTATE

223 N. Second Street
Chambersburg, Pa. 17201
Phone: 717-263-8441

or
Paul Harrison-Farm Salesman
Phone: 717-375-2359



75 acres, \$3500.00 per acre, large amount road frontage.

Commercial property, two greenhouses, large lot, 2½ story brick house, \$110,000.00.

Berks County

Commercial and residential 43 acres near Bally. \$2500 per acre.

A gentleman's farm, 64 acre steer farm zoned industrial, set up for over 1000 head. 5 steer barns, lot fences, feed center, 5-bay garage, exceptional new farmhouse with 8 rooms, 3 baths, fireplace, swimming pool, etc. \$500,000.

Lehigh County

102 acre steer farm, barn, feed lot and silo. Large stone house, center entrance, ready to be renovated. \$160,000.00.

Susquehanna County

Hunting ground, 165 acres, approx. 8 acre lake, \$550.00 per acre.

150 acres hunting ground, mostly wooded, accessible by road through most of property, \$550.00 per acre.

300 acre dairy farm, 240 acres tillable, good level to gently rolling land; 92 free stalls, double-six milking parlor, heifer barn, large silo and trench and sheds, modernized frame house, trailer for hired man. \$235,000.

Bradford County

128 Acre Dairy Farm, 96 tillable, bulk tank, barn cleaner, 50 stall barn and silo, 37 milk cows, 18 heifers, full line of machinery, 6 room house and bath, attached garage, all for \$133,000.

310 acres hunting ground, 70 acres open farm ground. \$320.00 per acre.

148 acre dairy farm, 54 stanchions, 2 silos, modern frame house, \$130,000.00.

105 acre dairy farm, 72 tillable, 31 stanchions, 2 silos, 7 room house, modern, in excel. condition. \$120,000.00.

110 acre dairy farm, 50 stanchion barn, 2 story shed, silos, machinery included. Colonial type house, 9 rooms, 1½ baths, \$98,000.

Clinton County

Two adjoining farms available, 148 ac. dairy farm, 16 room house, 3½ baths, 3-car garage, frame barn, etc. \$125,000.00.

113 acre steer farm, 6-room frame house with 1½ baths, good creek, fenced areas. \$100,000.00.

Westmoreland County

142 acre ready-to-go fully equipped jug milk store with complete meat store operation. Paper and jug milk processing. 110 cows, full line of modern machinery, 3 houses, sheds and barn, Harvestore silo. Milk store on 7 acres next to development in town. 135 acre dairy farm with sewer line to edge of property located within 6½ miles of new VW plant to start production within a year. What a wonderful opportunity for good operator with sound business sense. All for only \$650,000. Make money and build an estate for only \$650,000.

OTHER FARMS AVAILABLE
Please Call and Tell Us Your Preference

PAUL M. LONGACRE

Rt. 100
Hereford, PA 18056
Ph: 215-679-5919