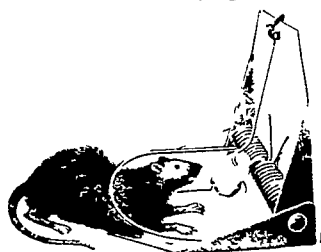




NOV. 8-14, 1976

Harvest is in and barns are tight.

Mend broken windows now Charles deGaulle died Nov. 9, 1970
 Third quarter of the moon Nov. 14 Henry Winston gave the
 Hope Diamond to Smithsonian Nov. 8, 1958 Average length of
 days for the week, 9 hours, 55 minutes All of northeast blacked
 out by massive power failure Nov. 9, 1965 Tis bias or grudge
 makes some men misjudge



be too hot Others swore that cold weather and the approach of same
 livened up the squirrels, and they did so much running and fighting that
 they whipped the fur off their tails

Home Hints: To keep the bottom crust of fruit and custard pies from getting
 soggy, brush the crust with a slightly beaten egg white and put it into the
 oven for five minutes before pouring in the filling

OLD FARMER'S WEATHER FORECASTS

New England: Early week starts with Indian summer, Wednesday
 through the end of week, cold and light flurries.

Greater New York-New Jersey: Clear, sunny and warm to start;
 turning cold and rainy Tuesday through week's end

Middle Atlantic Coastal: Rainy and raw at week's start, continu-
 ing cold throughout the week

Piedmont & Southeast Coastal: Beginning cloudy and warm with
 heavy rain on the coast on Tuesday, end of the week brings cold,
 clouds and frost

Upstate N.Y. - Toronto & Montreal: Cloudy, cold with snow in
 the west, cold and snow Thursday through week's end

(All Rights Reserved Yankee Inc. Dublin N.H. 03444)

Peoria Auction

Peoria, Illinois
Nov. 4, 1976

Receipts this week; 5300
 Last Week: 5600 Year Ago:
 5600 Compared with last
 weeks close, slaughter steers
 steady to weak. Slaughter
 heifers steady to 50 lower.
 Cows steady to 50 lower.
 Bulls steady. Receipts about
 70 percent slaughter steers,
 25 percent slaughter heifers
 balance mostly cows.

SLAUGHTER STEERS:
 Choice and Prime 3-4 1150-
 1300 lbs. 36.00-38.50, Load
 1315 lbs. 39.00; Couple loads
 same grade yield grade 4-5
 1310-1370 lbs. 35.50; Choice 2-
 4 950-1275 lbs. 38.00-39.50;
 Couple loads 40.00; few 900-
 950 lbs. 37.00-38.00; Mixed
 Good and Choice 2-4 900-1300
 lbs. 36.50-38.00; Good 2-3
 34.00-36.50; Load Good and
 Choice 2-3 Holsteins 35.50;
 Few Standard and Good 2-3
 33.00.

SLAUGHTER HEIFERS:
 Choice and Prime 3-4 900-
 1050 lbs. 37.00-37.50; Few
 yield Grade 4-5 33.00; Choice

2-4 850-1000 lbs. 36.00-37.00;
 Mixed Good and Choice 2-4
 800-1050 lbs. 34.00-36.00;
 Good 2-3 33.00-34.00.

COWS: Utility and
 Commercial 2-3 21.50-22.50;
 Few 23.00; Cutter 18.50-
 21.50; Canner 16.00-18.50.

BULLS: Yield Grade 1-2
 1100-1800 lbs. 26.00-29.00;
 Individual yield grade 1
 30.00.

New Holland
Dairy

Wednesday, Nov. 3

Reported receipts of 114
 cows, 26 heifers, and 2 bulls.
 Market lower than two
 weeks ago.

Two loads of Pennsylvania
 fresh cows 550 - 970,
 springers 575 - 735; Load of
 Franklin County fresh cows
 500 - 960; Load of Penn-
 sylvania fresh cows 600 - 835.

Locally consigned cows 450
 - 810; springing heifers 450 -
 550; open heifers 110 - 300;
 Bulls 260 - 470.

BEEFALO CALVES

- Produce tender, lean, full flavored meat, without the fat and cholesterol which is required for taste in regular beef.
- Tremendous amount of true hybrid vigor.
- Can be registered as Beefalo half blood breeding stock for progression to a Purebred herd.
- Good supply of Beefalo x Holstein dairy calves on hand. (healthy, vigorous calves - 1 week old thru weaning age).

Semen \$12 per ampule

NOVEMBER SPECIAL

Four frisky heifer calves on one nurse cow.

WALNUT HOLLOW FARM

Creek Road, Pipersville, PA 18947
 215-795-2452
 Member American Beefalo Association

Omaha Cattle

Omaha
Nov. 4, 1976

WEEKLY - 51 - Cattle -
 Compared with the previous
 weeks close -

Prices on Slaughter Steers
 and Heifers were mostly 50
 cents lower through mid-
 week, as compared late the
 previous week but limited
 late sales near steady. Cows
 50-1.00 lower and Bulls weak
 to 1.00 lower.

FOUR DAY RECEIPTS
 14,000 as compared 13,900
 previous week and 15,100 a
 year ago. Fed cattle prices
 were forced downward on a
 Monday run of 7000 head in
 reflection of lowered carcass
 quotations and virtually no
 recovery was made until
 Thursday despite curtailed
 marketings. Slaughter under
 Federal inspection was
 moderately decreased as
 many plants reduced
 slaughter quotas because of
 poor movement of the
 finished product and the
 unfavorable ratio between
 carcass realizations and
 current live prices. Most
 interests were not par-
 ticularly aggressive and were
 competitive only for
 minimum requirements. The
 Monday run included a
 Liberal percentage Choice
 Steers and Heifers but the
 supply thereafter was
 predominantly good to
 average-choice. Slaughter
 Steers made up ap-
 proximately 29 per cent of
 the weeks total and Heifers
 26 per cent cows comprised 7
 per cent and feeders 36 per
 cent.

STEERS: Load Choice
 with end Prime 3 1123 lbs.
 39.75 late, few loads Choice
 with end Prime
 predominantly 3 1143-1384
 lbs. 39.25-39.50, 3-4 1150-1362
 lbs. 38.50-39.00, Several loads
 3-5 1350-1427 lbs. 35.00-35.50.
 choice 2-4 975-1300 lbs. 38.00-
 39.25, Some 3-5 1300-1400 lbs.
 36.00-37.75. Mixed Good and
 Choice 2-3 950-1300 lbs. 37.00-
 38.25. Good 2-3 950-1350 lbs.
 33.00-37.00. Standard and
 Low-Good 2-3 31.00-32.50.
 Average of LS-214, Detailed
 quotations, for Choice 900-
 1100 lb. steers this week
 38.72, Choice 1100-1300 lbs.

38.65. Average weight steers
 first three days 1134 lbs. as
 compared 1129 lbs. previous
 week. Average weight
 heifers first three days 995
 lbs. as compared 977 lbs.
 previous week.

HEIFERS: Several loads
 Choice and Prime 3-4 950-
 1000 lbs. 38.00-38.50 fore part
 of week. Choice 2-4 875-1100-
 lbs. 36.50-38.00, Some Choice
 and Prime 3-5 1125-1235 lbs.
 33.50-36.75. Mixed Good and
 Choice 2-3 850-1000 lbs. 35.00-
 36.25, occasionally 36.50. Good
 2-3 31.50-35.00. Small
 lots Standard and Good 2-3
 29.00-31.00.

COWS: Utility and
 Commercial 2-4 20.00-22.00.
 Canner and Cutter 16.00-
 20.50. Shelly Canner 14.00-
 15.50.

BULLS: 1-2 1400-1800 lbs.
 24.00-28.00, Individual 1 28.50-
 29.00.

Lancaster

Grain Prices

Friday, Nov. 5

These prices are made up
 of the average prices quoted
 by a number of participating
 area feed and grain con-
 cerns. It should be noted,
 however, that not every
 dealer or broker handles
 each commodity. All prices
 are per bushel except ear
 corn and soybean meal
 which are per ton.

The average prices quoted
 Friday, Nov. 5 are as
 follows:

	Bid+	Offered+
New Ear Corn	47.33	54.00
Old Ear Corn	63.00	70.00
Shelled Corn	2.31	2.48
Barley	2.00	2.15
Oats		
Local	1.60	1.80
Western	1.82	1.99
Wheat		
Millers	2.59	2.82
Soybeans	6.20	
Soybean Meal	220.00	
+Bid is the price the dealer will buy from the farmer delivered to the mill. Offered is the price the dealer will sell for at his mill.		

J. B.
KELLER
& BRO.
DAIRY
COWS

REGISTERED COWS Mount Joy, PA 17552

Rochy Ivanhoe Dina Charm due 11-18-76 to Jet Stream,
 2-11 379 20,918 765 3.7
 Polytechnic Master Bond due 11-24-76 to R.O.R.A.
 Elevation 4-2 296 17,655 668 3.8
 Leebar Bronson due 12-5-76 to Jet Stream 4-3 305 19,029
 761 4.0
 Indianhill Senator Flame due 11-20-76 to Merry King 2-3
 369 11,172 432 3.9 coming with 2nd calf
 Fair-Hill Trust Buster due 12-6-76 to Elevation Ace, 1st
 calf
 A Citation Sovereign due 11-5-76 to Pencil, 1st calf
 Cochran Sunshine due 2-24-77, 1st. calf. Dam: Rosafe
 Pontiac Juniper Ex 2E 91 L.T. over 200,000. 2nd
 dam: Triumph Johanna Ex 2E 90 L.T. over 300,000
 Carnation Royal Master due 5-12-77 to Countdown, 1st
 calf. Dam: Gt 83 High Meadow Farm Span L.T. to
 date over 160,000
 Fleetridge Monitor due 2-10-77 to A Citation
 Skagvale Hattie Maple due 5-19-76 to A Citation

High Quality Grade
Cows & Heifers

Transportation and financing available.

STEVE KELLER
717-653-2284BOB KELLER
717-426-1075

Office: 717-653-4851

Oklahoma

Oklahoma City
Nov. 4, 1976

Estimated receipts 9,500
 Same day last week 11,437
 Moderately active, feeder
 cattle and calves generally
 steady; majority receipts
 mixed Good and Choice and
 Choice 400-750 lb. feeder
 steers and 350-650 lb. feeder
 heifers; Fairly large at-
 tendance buyers.

FEEDER STEERS:
 Choice, few Prime 300-500 lb.
 36.75-39.50, Few lots and part
 loads 375-406 lb. 40.50-40.90;
 500-600 lb. 35.50-39.00,
 package 551 lb. at 39.90; 600-
 700 lb. 34.50-36.35, part load
 624 lb. at 38.10; 700-800 lb.
 34.00-35.60; Few 800-900 lb.
 34.25-34.70; Mixed Good and
 Choice 300-500 lb. 34.50-38.50;
 500-600 lb. 32.75-35.00; 600-800
 lb. 32.25-34.25; Good 300-915
 lb. 30.50-33.75; Few Good 650-
 850 lb. Holstein Steers 26.50-
 27.00.

FEEDER HEIFERS:
 Choice, Few Prime 300-500
 lb. 28.00-31.00; 500-730 lb.
 29.00-30.80; Mixed Good and
 Choice 300-500 lb. 26.50-28.50;
 500-850 lb. 27.00-29.25; Good
 300-500 lb. 24.50-26.50; 500-770
 lb. 25.75-26.75.

FOR THE WEEK:
 Compared to late last week,
 feeder steers under 600 lb.
 strong to 50 cents higher,
 instances 1.00 higher on thin
 fleshed offerings suitable for
 grazing; Feeder Steers over
 600 lb. recovered the early
 loss to close near steady;
 Feeder Heifers and Heifer
 calves regained the early
 week loss to close steady to
 strong. Slaughter Cows and
 Bulls lost the early advance
 to close near steady; salable
 receipts near 22,300 head
 compared to 29,622 last week
 and 21,162 the same week a
 year ago. Cows and Bulls
 near 13 per cent cattle
 receipts; Feeders 85 per cent
 of the total.

HAY, STRAW AND EAR CORN SALE

Also Selling Peanut Hulls By The Load.

Every Wednesday at 12 Noon

HARVEY Z. MARTIN

North Maple Ave., Leola, PA
Home Phone 215-445-5303

We Buy On Orders.

Bus. Phone Wed. Only

717-656-7270

At David Good's Farm Equipment Sale
Leola, PA

We also buy hay and straw privately.

BEEFALO HYBRID
CATTLE
BEEFALO - IT'S GREAT

- Rapid gains on grass and roughage
- 55-65 lb. Births - up to 1100 lb. yearling
- Test data show 62 percent carcass dress out
- We stock and distribute Pureblood Beefalo Semen and Half-Blood Beefalo heifers and bulls.
- Visit our farm and see our animals.

SEMEN \$12 an ampule

NOW TAKING ORDERS FOR 3/4 BULLS & HEIFERS.

BEEFALO N & J

4270 Quakerbridge Road
 Princeton, NJ 08540
 609-896-0335

Member World Beefalo Association

OUR GOAL IS GETTING
TOP DOLLAR FOR YOU

SHIP TO THE

DANVILLE LIVESTOCK
MARKETOld Rt. 11 Danville, Pa.
Phone (717) 275-2880

SALE EVERY MONDAY 2 P.M.

Horse Sale 2nd Sat. Every Month 10:30 A.M.

OWNER: MELVIN M. LEHMAN
717-275-2880 Bus.