

Farm Equipment

Farm Equipment



**USED MACHINERY**

Owatonna 350 Self Propelled  
Gehl Round Baler (1 Yr. Old)  
Hawkbilt Round Baler  
2 Row No-Till A.C. Planter, 3 Pt. Hitch  
A.C. 180 Gas Tractor w-all hydraulic loader  
N.I. 272 cut-ditioner (1 yr. old)  
101 IHC. Self-Propelled Combine, 10' Grain  
Head and 2-row wide corn head.  
A.C. 185 Diesel Tractor with Hydraulic Loader.  
A.C. 170 Gas Tractor, Real Sharp.

**NEW EQUIPMENT**

New Idea 272 Cut-ditioners  
1-row and 2-row New Idea Corn Pickers and  
Shellers.

**CANYON IMPLEMENTS INC.**

U.S. ROUTE 6, R.D. 1  
MANSFIELD, PA 16933  
PHONE 717-724-2731

**TRY A CLASSIFIED**

**COMBINES** - 1973 J.D. 6600 D. fully equipped, 7700 Hydrostat fully equipped, 7700 gear, 1971 - 6600, 4400, 95, (2) 45, 40 square backs, Gleaner L cab air grain & corn, F, with both heads, G, CII, K w-cab 10 ft. & 2 row corn head. Int. 815 D. w-both heads, 503, 82 pull type like new. M.F. all Quick tach, 510 D. w-air, 410 D. w-cab, 300 w-cab, r'der 410, 300, 510, 82 w-cab. N.I. 702 Uni, 701 Uni tractors w-combines & shellers, 729A & 729 Uni shellers w-3 & 4 row 30" & 40" heads.

**CORN HEADS**—(New) John Deere 444, 643, 244, used 843, 643, 444, 443, 343, 244, 435, 434, 335, 235, 234, 205, Massey Ferguson 44, 43, 24, 421, 222 for 300 & 82. Gleaner F335, A330, Int. 763 six row, 227, row for 38" for 315 & J.D. 313.

**COMING IN**—Tractors—(used) 4430, 4230, 70 Model 3020, 5020 tractor puller, 76 Chevrolet C65 with 3000 miles, Farmall 756, Int. 5x18 reset plow, (3) used 1 row pickers 600 to 1000.

**HARVESTERS**—Gehl 600 with electric sharpener and 2 heads, John Deere 38 with 2 row corn, 34. New Holland 717.

**HAYBINES**—(New) John Deere 1209, Owatonna self propelled.

**BALEERS**—(New) John Deere 336 w-thrower \$4,795 now \$4,675.00, N.H. bale stack wagons, (new) 1034, used 1010. N.H. 352 Grinder mixer. N.H. 256 rake.

(New) M.F. grain drills, used J.D. FBB Kill Bros. grain boxes.

**CORN PICKERS** (2) (New) New Idea 2 row pull 30" & 40" w-8 & 12 roll beds, 3 used narrow row w-8 & 12 roll beds, 3 used narrow row w-8 & 12 roll beds (like new), 2 nice used 2 row wide w-12 roll beds, also 5 w-8 roll, shellers

For your needs call:

**PAUL STITZEL**

734 Windsor St., Hamburg, PA 19526  
Phone Bus. 215-562-8377  
Home 215-562-7451

Farm Equipment

Farm Equipment

Plow shares and parts, and plows repaired, also steel horse trees sold and yokes and wooden wagon tongues. 3/4 mile northeast of Bard's Crossing, Route 23 - Daniel S. Glick along Windy Tor Road, Bird-in-Hand R1, PA

Used Disc Harrows  
New Shipment of Manure Spreaders.  
Used 155 IHC PTO Spreader.  
**COPE & WEAVER CO.**  
New Providence  
786-7351

1 - M. C. Continuous Flow grain dryer Model 300B, LP gas, 110 volt, 540 RPM tractor, PTO drive, very good condition - \$3000.00

1 - Bradey 144 inch flail chopper for corn stalks, 540 RPM, PTO - \$400.00

1 - Gandy Hi-Lo granular chemical applicator, pull type, 12 ft. box with stainless steel bottom - could be mounted on disc for pre-plant incorporation - \$400.00

**F. O. MITCHELL & BRO., INC.**  
Perryman, Harford County, MD  
301-272-3636 - Day  
301-272-2620 - Night



**A. L. HERR & BRO.**

Quarryville, Pa. 17566  
786-3521

**NEW & USED EQUIPMENT, SALES & SERVICE**

MASSEY FERGUSON: Grain Drill, 245 Tractor  
CASE: 107 SOLD tor, 990-Tractor, Unloaders Mod. 1737-1740-1816-1830-1845, 12 ft. Offset Disc., 1370 Tractor (no cab) 1210 P.S., 1210 Stand, 995, 2-990's.

GEHL: Flail Chopper, Feeder Box, CB600 Harvester, FB 99 Blower, Forage Wagons, Round Baler, Demo., 120 Grinder Mixer, 6-8-10 ton running gears.  
NEW IDEA: Elevator, 1 and 2 row corn pickers, spreader, uni-system & attachs., 2 row mid. picker, snow blower.

MISC.: Plows 4, 5 & 6 Bottom, Pittsburgh 12 ft. Disc., Lham Cultimulcher, 5 & 6 RFT. Rotary Cutters, Satoh Tractors, McCurdy Gravity Bins.

**COMPACT TRACTORS NEW & USED**

Case, New Idea Elec., Massey Ferguson

**— USED EQUIPMENT —**

**TRACTORS**

Farmall Cub w-belly & sickle mowers  
Case VAC with cult.  
Farmall A with cult.  
Case Model SC  
Case 1070 w-cab  
Farmall C w-cults  
Farmall 400  
Case D-B 990

**SPREADERS**

N.H. 518, 675  
N.I. 19, 212, 213, 214  
M.F. 160

**MISC.**

N.I. Cut-ditioners  
N.H. 352 Grinder Mixer  
Case offset disk harrow  
28 ft. Smoker-Elevator w-hydraulic lift  
J.D. Disc AW  
Gehl 120 Grinder-Mixer  
J.D. 894 Rake  
J.D. Grain Drill  
**SKID LOADERS**  
Case 1737 and 1537  
**CORN PICKERS**  
N.I. 2 row mounted  
Case Model P Snapper  
N.I. 10. 1 row



**Nothing runs like a Deere**

**USED EQUIPMENT IN STOCK**

**TRACTORS**

J D 4630 Like New - Low Hrs  
David Brown 995 w/Case Loader SOLD  
Ferguson T035 w/Loader  
Farmall M  
Ford 8N w/Loader  
J D 420 High Clearance

**ROLLER HARROW**

J D 930 12 3 pt  
(3) J D 925 12

**PLOWS**

(3) J D F145 5 16  
J D F620 4 16 - Pull Type

**CORN HEADS**

(1) 2 J D 444

**CORN PLANTERS**

J D 1300 6 row 30'  
Tool Bar w/6.81 Units

**DISK HARROWS**

Miller 18 ft hyd fold  
J D 1630 11 7" Like New  
J D BWA 15 SOLD  
J D BW12 6"  
J D Y 3 pt 11 2"

**GRAIN DRILL**

Ontario SOLD

**CHISEL PLOW**

1600 Series 14'

**HAY TOOLS**

A C Round Baler  
Case Oblique Rake

**MANURE SPREADER**

A C Conventional

**FIELD CULTIVATOR**

J D 15 ft



CFH, INC.

EAST MAIN ST.—CECILTON, MD.

1-301-275-3601



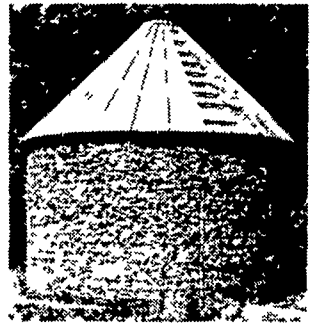
Farm Equipment

Farm Equipment

ONLY ONE LEFT

**BEHLEN CRIBS**

Precision Manufactured  
25" Filler Cap  
Hot Dip Galvanized (after welding)  
Ear Corn Spreader  
In Stock for delivery:  
1684 Bu.



**KILLBROS. GRAVITY BOXES**

180 Bu. and 215 Bu. without Side Boards  
3"x6" Hardwood Sills  
Hydr. Auger for grain, feed & Fertilizer  
Steel extension sides available.

**SPERRY NEW HOLLAND WAGONS**

4 Sizes, 3 tongue options  
Wheel and Tire options  
Famous "Conestoga" Quality  
Made by Lancaster County Craftsmen.

Free financing on N.H. Hay Equipment til June 1, 1977 on N.H. Forage Equipment til Sept. 1, 1977.

See Us For Used-Spreaders, Forage Harvesters, Blowers, Haybines, etc.



SALES \* SERVICE  
770 Woodcrest Avenue  
RD3, Lititz, PA  
Phone: 717-626-7766

**EVERGREEN TRACTOR CO. INC.**



30 EVERGREEN ROAD  
LEBANON, PA 17042

Lebanon County's Only

**JOHN DEERE FULL SERVICE DEALERSHIP**

Phone (717) 272-4641

**— USED COMBINES —**

- (1) Used Model GKS Gleaner with cab, 6-row 30" corn head, 15 ft. platform with pickup reel.
- (1) Used Model F Gleaner with cab, 4-row 30" corn head 13' platform with pickup reel.
- (1) Used John Deere Model 55 with cab, 3-row 30" Corn Head, 12' Platform.
- (1) Used M.F. 300 with 10' platform.



**FALL CLEARANCE OF NEW EQUIPMENT**



- 364 Utility Tractor.....\$5700
- 990 Mower Conditioner.....\$3800
- No 8 Flail Chopper.....\$2775
- 440 Baler All Twine.....\$3700
- 1150 Grinder-Mixer.....\$3450
- 555 Manure Spreader Hyd Web.....\$2100
- 315 Packer-Mixer.....\$2775
- 48 Blower.....\$ 895
- 401 Spring Tooth Harrow - 12 ft.....\$ 475

**USED EQUIPMENT**

- 706D T A 16 9 Tires, 3000 hrs.....\$7900
- 85 Massey - Gas, Good Rubber, New Paint.....\$2900
- 400 Farmall Reconditioned, Rebuilt TA.....\$2300
- H w/loader Reconditioned New Paint.....\$1300
- H Reconditioned, Excellent Rubber, New Paint.....\$ 950

**SPECIALS FOR NOVEMBER**

**I H Baler Twine (Red)**

Buy The Best for **\$13.75**

40 Bales or over delivered free!!

Aux. Valve & Control for 656, 756, 766, 966

[Reg 351.00] **\$275.00**

**ROBINSON BROTHERS**

DELTA, PA  
Off Rt 74 at Mason Dixon Line  
Sales - Dave Robinson  
Charles Robinson  
PH: 1-717-456-5215

