

CUSTOM SLAUGHTERING CATTLE & HOGS

CUSTOM:
Curing & Smoking

CUSTOM:
Bologna Making



**FRESH & SMOKED
MEATS**

13 N. Market St.
Elizabethtown, Pa.
PH: (717)-367-1246

Open house at Maryland bull stud

FREDERICK, Md. - The 1976 Maryland Artificial Breeding Cooperative annual meeting and open house was held here on October 14. Featured speaker, Dr. Clinton E. Meadows, Dairy Extension specialist from Michigan State University, presented a talk on "Improving Dairy Herd Replacements". He stressed the value of official testing, proper identification and proper feeding. He also recommended the use of

several different sample sires for up to 30 per cent of a herd's breedings.

Two dairy industry contemporaries, J. Herbert Snyder and Henry R. Shoemaker, 81, were honored by the Maryland Dairy Shrine at its meeting. Shoemaker is the first county Extension agent - active or retired - to receive official recognition from the Maryland Dairy Shrine. He was with Extension for 37 years.

J. Herbert Snyder of Walkersville, died on May 9, 1976, just 10 days short of his 74th birthday. He was well-known in former years as a dairy farmer, Guernsey cattle breeder, author, Grange leader, and general manager of the Frederick Production Credit Association, a farmer-owned lending organization operating in four major dairy-farm counties of Central Maryland.

Both Snyder and Shoemaker were active supporters of the Maryland Artificial Breeding Cooperative and assisted in establishment of the organization's bull stud north of Frederick, now a part of Sire Power, Inc.

Maryland ABC technician William Pippin was named technician of the year. Since he began breeding cows for Maryland ABC in 1958, he has averaged over 2400 first service breedings per year. Last year he bred nearly 3000 cows in the Bay Area. Other technicians recognized were Dave Patrick, Warren Thompson,

Lewis Dixon, Frank Fogle, Wilber Iley, A. Lloyd Greene, Edward Kauffman III, Robert Pippin, Paul Dodson and Wayne Sprout. The awards program was not completed until W. Lewis "Lew" Campbell and Robert E. "Buck" Shaeffer received their belated NAAB (National Association of Animal Breeders) "25 Year Service" awards.

Swine embargo erased

HARRISBURG - Pennsylvania Secretary of Agriculture Raymond J. Kerstetter has announced that all embargo restrictions imposed by the Commonwealth of Pennsylvania against the movement of swine from the state of New Jersey into the Commonwealth are revoked, effective November 1, 1976.

With the release of the embargo, all classes of swine from the state of New Jersey may move through all marketing channels within the Commonwealth, provided they meet Pennsylvania's swine import requirements.

An embargo on New Jersey swine has been in effect since August 3 when an outbreak of hog cholera was reported on a Belleplain farm. The embargo was modified August 16 and September 8.

A modified swine embargo is still in effect against swine from Massachusetts. Embargoes on New Hampshire and Rhode Island swine were previously released.

According to Secretary Kerstetter, Pennsylvania has had no reported cases of hog cholera and the disease appears to have been contained in the other states by state and federal officials.

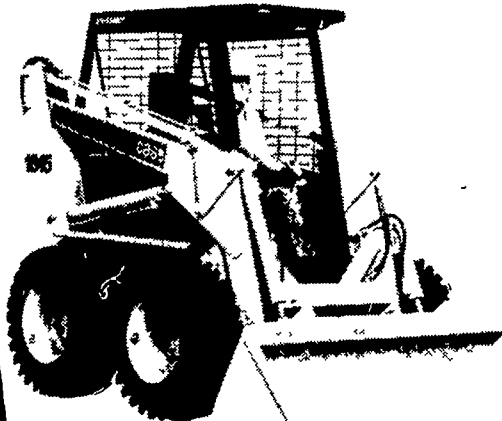
Hog cholera cannot be transmitted to other animals or humans, but is extremely contagious among swine and is usually fatal.



UNI-LOADER SALE IN PROGRESS NOW

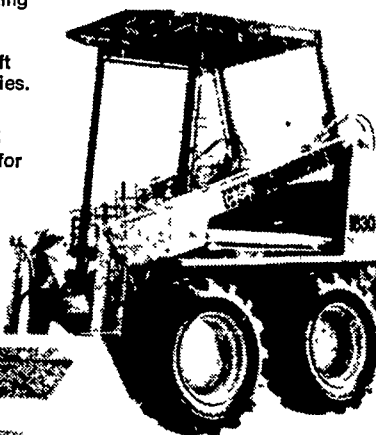
CALL FOR FREE DEMONSTRATION

Pick
from this
line-up of
ALL
HYDROSTATIC
CASE
UNI-LOADERS

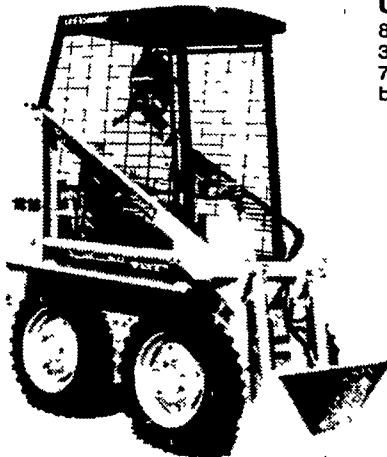


**CASE 1845
UNI-LOADER:**
83" high, 63" wide,
5825 lb operating
weight, gas,
5965 lb diesel
9 1 to 25 4 cu ft
bucket capacities.

**CASE 1845S
UNI-LOADER**
also available for
corrosive
environments



**CASE 1830
UNI-LOADER:**
83½" high, 54" wide,
3940 lb operating weight
7 7 to 15 1 cu ft
bucket capacities.



**CASE 1816
UNI-LOADER:**
Only 76½" high, 35" wide,
2029 lb operating weight
3 82 to 8 72 cu. ft
bucket capacities



Scatback™
fast, sure-footed
maneuverability!

ASK US ABOUT SPECIAL
FACTORY DISCOUNTS

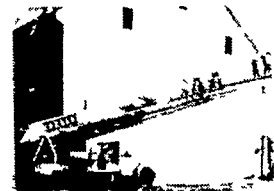


BINKLEY & HURST BROS.

133 Rothsville Station Road
Lititz, PA.
Phone 717-626-4705



COMPLETE FARM PAINTING



We Use Quality
PAINT AND IT
DOES STAY ON!!

AERIAL LADDER EQUIPMENT

- * Modern and Efficient Method
- * Reasonable Prices
- * Spray-On and Brush-In Method
- * Sandblasting if Necessary

FOR FREE ESTIMATES
WRITE

ESH SPRAY PAINTING

(Daniel S. Esh)
(C. Ralph Miller)
SPRAY ON AND
BRUSH-IN PAINTER
BOX 350A

RONKS PA 17572

GET BACK TO THE BASICS

THE STANLEY RANGE

BY
WATERFORD FOUNDRIES LTD.



See on Display at Root's Auction Every Tuesday Night.

HIESTAND DISTRIBUTORS INC.

Box 96

Marietta, PA 17547

Phone 717-426-3286